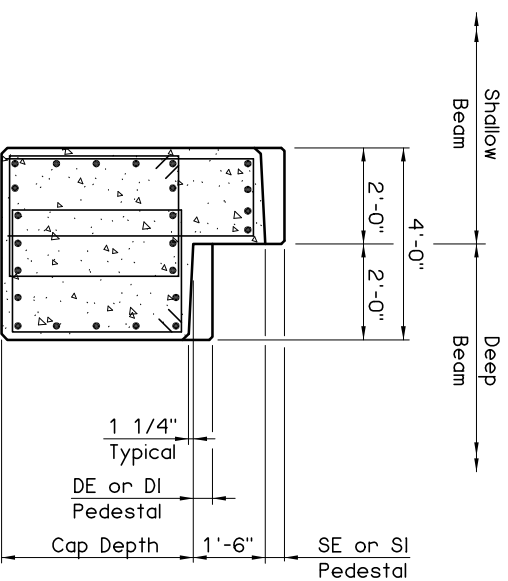
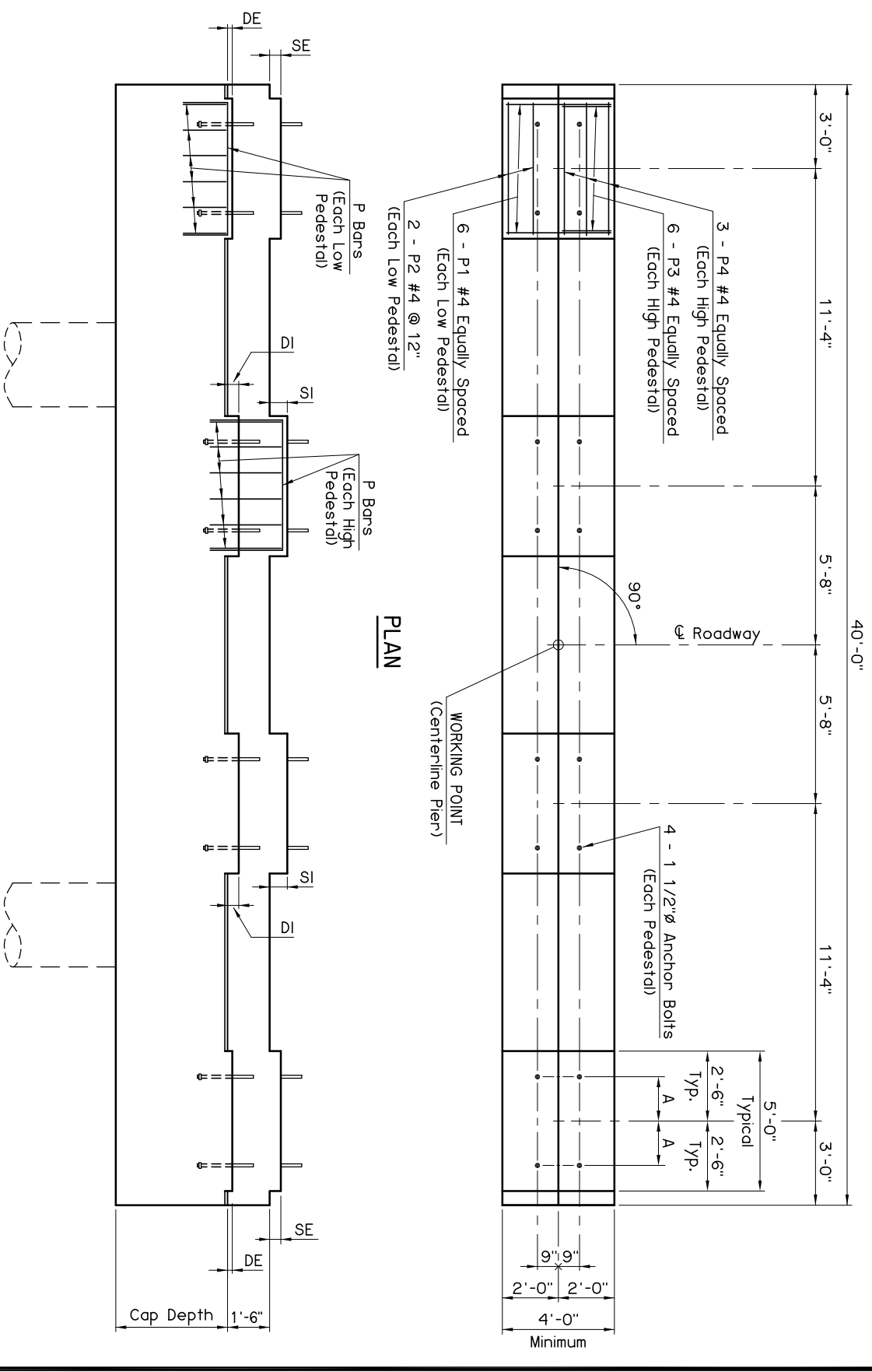


SCHEDULE FOR DIMENSION A	
BEAM TYPE	A
TYPE II PRECAST BEAM	11 1/2"
TYPE B PRECAST BEAM	11 1/2"
TYPE III PRECAST BEAM	1'-3 1/2"
TYPE BT-72 PRECAST BEAM	1'-3 1/2"
TYPE J PRECAST BEAM	1'-5 1/2"

SCHEDULE FOR PEDESTAL DIMENSIONS					
SHALLOW BEAM	DEEP BEAM	SE	SI	DE	DI
TYPE II	TYPE IV	2"	4 3/4"	2 1/2"	5 1/4"
TYPE B	TYPE IV	3 1/2"	6 1/4"	2"	4 3/4"
TYPE IX	BT-72	3"	5 3/4"	2"	4 3/4"
TYPE IX	TYPE J	3"	5 3/4"	2"	4 3/4"

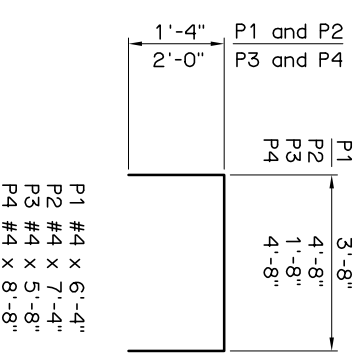
TABLE OF PRECAST BEAM TYPE COMBINATIONS ACCOMMODATED BY 18" STEPPED PIER CAP			
SHALLOW BEAM	DEEP BEAM	SE	SI
TYPE II	TYPE IV		
TYPE B	TYPE IV		
TYPE IX	TYPE BT-72		
TYPE IX	TYPE J		

Cap Details shown are for informational purposes only and are to be used in a comprehensive Bridge Pier analysis and design by an Oklahoma Registered Professional Engineer. Analysis of Bridge Pier shall account for, but is not limited to, eccentricity of live loads and application of collision forces (if necessary).



TYPICAL SECTION THRU CAP

NOTE: Cap reinforcing shown is for illustration only.



PIER PEDESTAL BAR LIST			
MARK	SIZE	NO.	FORM LENGTH
P1	#4	24	BNT. 6'-4"
P2	#4	8	BNT. 7'-4"
P3	#4	24	BNT. 5'-8"
P4	#4	12	BNT. 8'-8"

P1 #4 x 6'-4"  
P2 #4 x 7'-4"  
P3 #4 x 5'-8"  
P4 #4 x 8'-8"

APPROVED BY BRIDGE ENGINEER *Clayton Head* DATE *8/18/03*

OKLAHOMA DEPT. OF TRANSPORTATION  
BRIDGE STANDARD (ENGLISH)

**18" STEPPED PIER CAP DETAILS**

1999 SPECIFICATIONS B40-PIER-SCAP-18

ODE B-33E