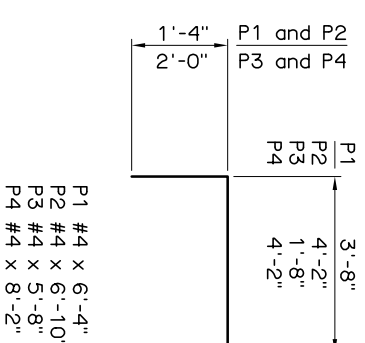
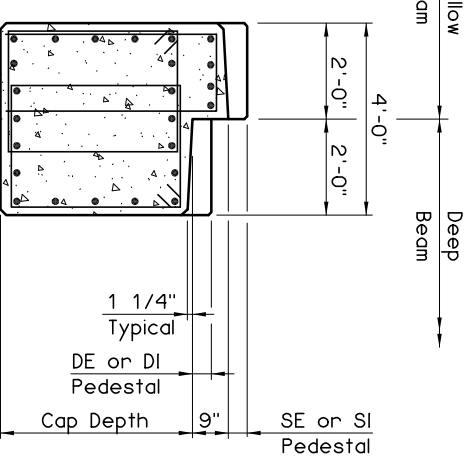
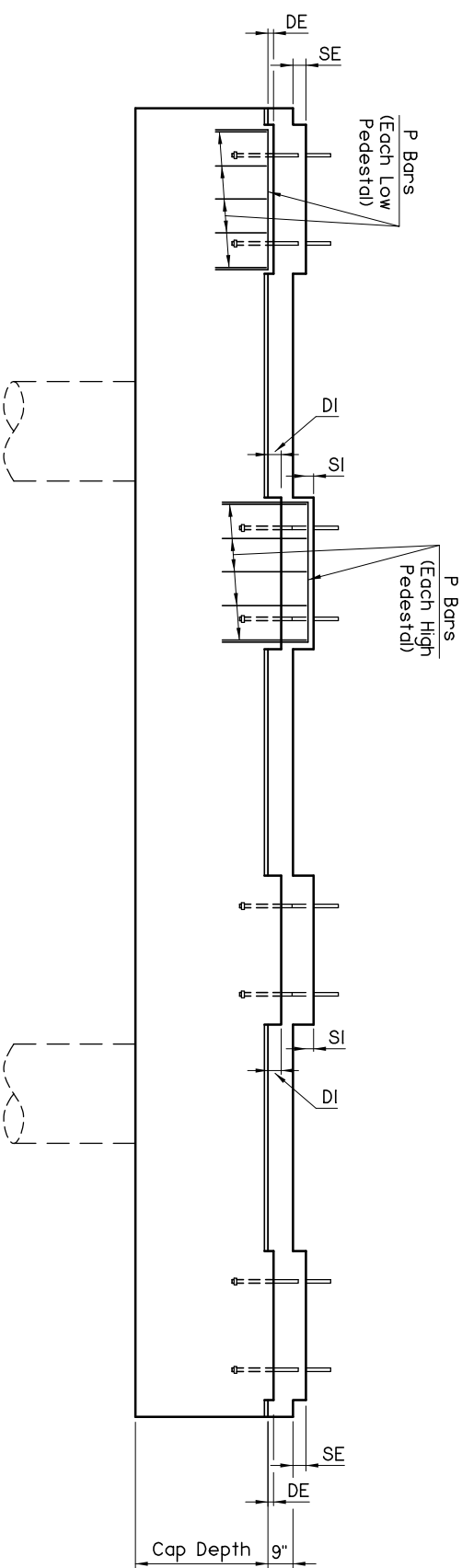
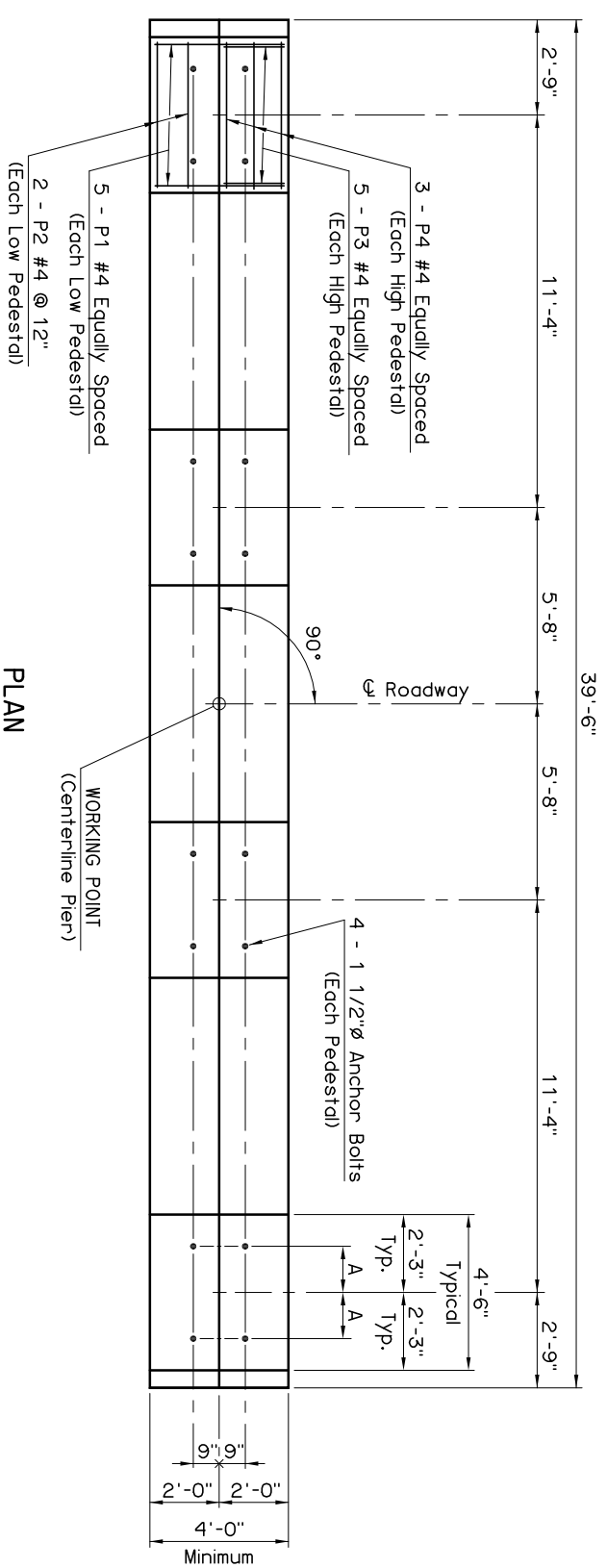


SCHEDULE FOR DIMENSION A	
BEAM TYPE	A
TYPE III PRECAST BEAM	1'-1 1/2"
TYPE C PRECAST BEAM	1'-1 1/2"
TYPE IV PRECAST BEAM	1'-3 1/2"

SCHEDULE FOR PEDESTAL DIMENSIONS					
SHALLOW BEAM	DEEP BEAM	SE	SI	DE	DI
TYPE III	TYPE IV	2"	4 3/4"	2"	4 3/4"
TYPE C	TYPE IV	7"	9 3/4"	2"	4 3/4"

TABLE OF PRECAST BEAM TYPE COMBINATIONS ACCOMMODATED BY 9" STEPPED PIER CAP			
SHALLOW BEAM	DEEP BEAM	TYPE III	TYPE IV
TYPE III	TYPE IV	TYPE III	TYPE IV
TYPE C	TYPE IV	TYPE III	TYPE IV

Cap Details shown are for informational purposes only and are to be used in a comprehensive Bridge Pier analysis and design by an Oklahoma Registered Professional Engineer. Analysis of Bridge Pier shall account for, but is not limited to, eccentricity of live loads and application of collision forces (if necessary).



PIER PEDESTAL BAR LIST				
MARK	SIZE	NO.	FORM	LENGTH
EPOXY COATED REINFORCING				
P1	#4	20	BNT.	6'-4"
P2	#4	8	BNT.	6'-10"
P3	#4	20	BNT.	5'-8"
P4	#4	12	BNT.	8'-2"

TYPICAL SECTION
THRU CAP

NOTE:
Cap reinforcing shown is for illustration only.

APPROVED BY BRIDGE ENGINEER *Chad Head* DATE *8/18/03*
 OKLAHOMA DEPT. OF TRANSPORTATION
 BRIDGE STANDARD (ENGLISH)
9" STEPPED PIER CAP DETAILS
 1999 SPECIFICATIONS B40-PIER-SCAP-9
 OOE
 B-32E