

Cap Details shown are for informational purposes only and are to be used in a comprehensive Bridge Pier analysis and design by an Oklahoma Registered Professional Engineer. Analysis of Bridge Pier shall account for, but is not limited to, application of collision forces (if necessary).

SCHEDULE FOR DIMENSION A	
BEAM TYPE	A
TYPE II PRECAST BEAM	11' 1/2"
TYPE B PRECAST BEAM	11' 1/2"
TYPE III PRECAST BEAM	1'-1 1/2"
TYPE C PRECAST BEAM	1'-1 1/2"
ROLLED BEAM 30' thru 70' SPANS	1'-0"
ROLLED BEAM 75' thru 100' SPANS	1'-3 1/2"

TABLE OF ROLLED BEAM SPAN COMBINATIONS ACCOMMODATED BY 6" STEPPED PIER CAP

SHALLOW BEAM SPAN	DEEP BEAM SPAN
30'	55' thru 100'
35'	65' thru 100'
40'	65' thru 100'
45'	65' thru 100'
50'	100'

TABLE OF PRECAST BEAM TYPE COMBINATIONS ACCOMMODATED BY 6" STEPPED PIER CAP

SHALLOW BEAM	DEEP BEAM
TYPE II	TYPE III
TYPE B	TYPE C

SCHEDULE FOR PEDESTAL DIMENSION SE FOR ROLLED BEAMS

SHALLOW BEAM SPAN	DEEP BEAM SPAN									
	55'	60'	65'	70'	75'	80'	85'	90'	95'	100'
30'	3 3/4"	4 1/8"	6 3/8"	6 3/4"	6 3/8"	7 1/8"	7 1/2"	7 5/8"	7 7/8"	7 7/8"
35'			3 5/8"	4"	3 5/8"	4 3/8"	4 3/4"	4 7/8"	4 7/8"	5 1/8"
40'			3 1/2"	3 7/8"	3 1/2"	3 7/8"	4 1/4"	4 5/8"	4 3/4"	5"
45'			3 5/8"	4"	3 5/8"	4 3/8"	4 3/4"	4 7/8"	4 7/8"	5 1/8"
50'										2 1/2"

NOTE: Dimension DE is 2 for all Rolled Beam Spans.

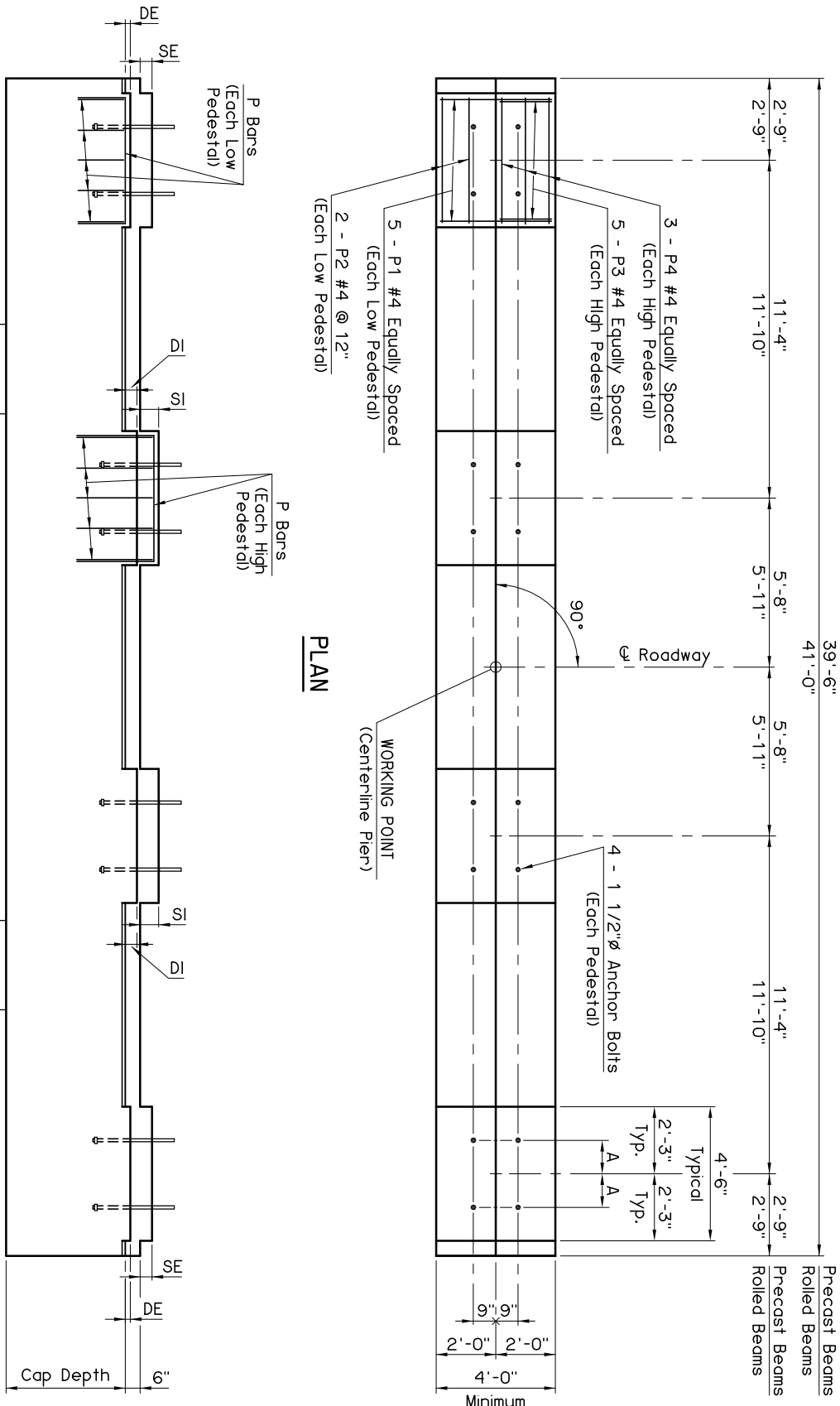
SCHEDULE FOR PEDESTAL DIMENSION SI FOR ROLLED BEAMS

SHALLOW BEAM SPAN	DEEP BEAM SPAN									
	55'	60'	65'	70'	75'	80'	85'	90'	95'	100'
30'	6 5/8"	7"	9 1/4"	9 5/8"	9 1/4"	9 5/8"	10"	10 3/8"	10 1/2"	10 3/4"
35'			6 1/2"	6 7/8"	6 1/2"	6 7/8"	7 1/4"	7 5/8"	7 3/4"	8"
40'			6 3/8"	6 3/4"	6 3/8"	6 3/4"	7 1/8"	7 1/2"	7 5/8"	7 7/8"
45'			6 1/2"	6 7/8"	6 1/2"	6 7/8"	7 1/4"	7 5/8"	7 3/4"	8"
50'										5 3/8"

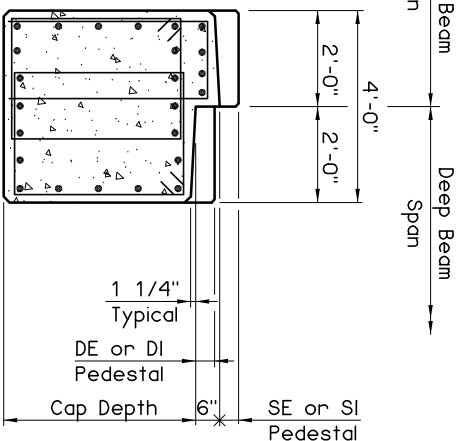
NOTE: Dimension DI is 4 7/8 for all Rolled Beam Spans.

SCHEDULE FOR PEDESTAL DIMENSION FOR PRECAST BEAMS

SHALLOW BEAM	DEEP BEAM	SE	SI	DE	DI
TYPE II	TYPE III	4 1/2"	7 1/4"	2"	4 3/4"
TYPE B	TYPE C	2"	4 3/4"	2 1/2"	5 1/4"

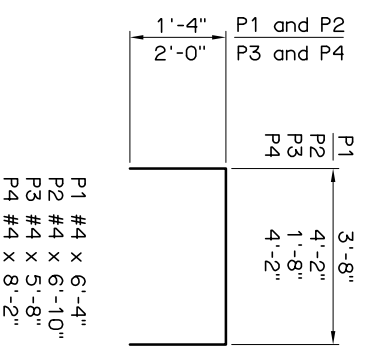


ELEVATION



TYPICAL SECTION THRU CAP

NOTE: Cap reinforcing shown is for illustration only.



PIER PEDESTAL BAR LIST			
MARK	SIZE	NO. FORM	LENGTH
EPOXY COATED REINFORCING			
P1	#4	20	6'-4"
P2	#4	8	6'-10"
P3	#4	20	5'-8"
P4	#4	12	8'-2"

P1 #4 x 6'-4"
P2 #4 x 6'-10"
P3 #4 x 5'-8"
P4 #4 x 8'-2"

APPROVED BY BRIDGE ENGINEER *Chad Head* DATE *8/19/09*

OKLAHOMA DEPT. OF TRANSPORTATION
BRIDGE STANDARD (ENGLISH)

6" STEPPED PIER CAP DETAILS

1999 SPECIFICATIONS B40-PIER-SCAP-6

CODE B-31E