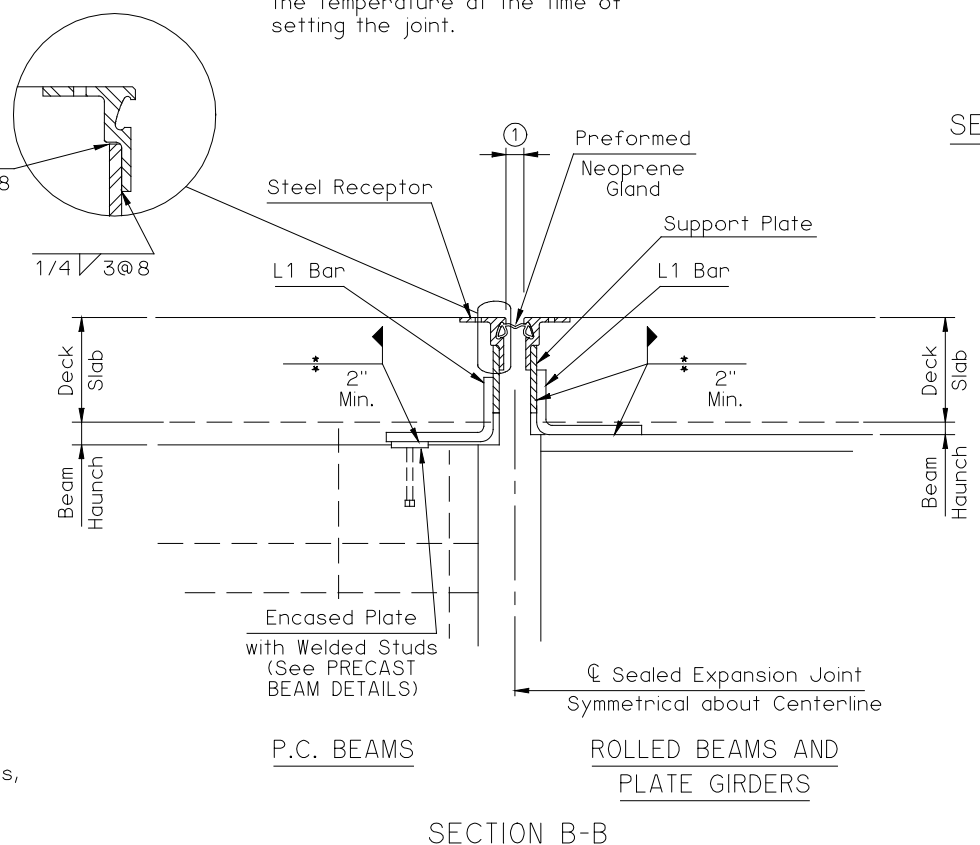
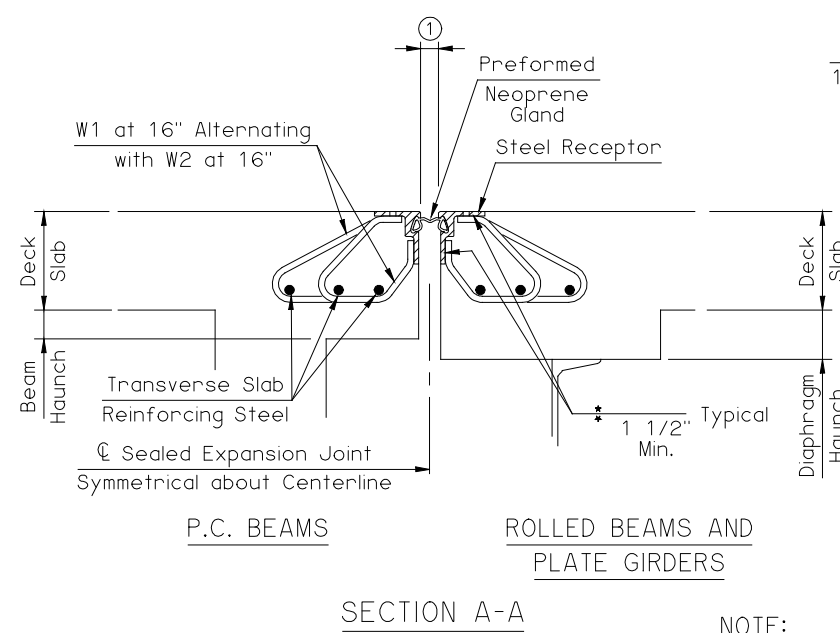


① Design Engineer to provide schedule of joint opening size required by the temperature at the time of setting the joint.



TEMPERATURE CHANGE PER EVERY 1/8" CHANGE IN BRIDGE LENGTH ②

BEAM TYPE	TOTAL EXPANSION LENGTH				
	100'	200'	300'	400'	500'
CONCRETE	17.3°F	8.7°F	5.8°F	4.3°F	3.5°F
STEEL	16.0°F	8.0°F	5.3°F	4.0°F	3.2°F

② Table is for assisting in determining joint opening size. A nominal 2" joint opening will correspond to 43°F for concrete beams and 60°F for steel beams. Decrease opening as temperature rises and increase as temperature drops.

APPROVED BY BRIDGE ENGINEER *Robert J. Smith* DATE 3-7-08

OKLAHOMA DEPT. OF TRANSPORTATION
BRIDGE STANDARD (ENGLISH)

SQUARE SEALED EXPANSION JOINT
CONVENTIONAL

1999 SPECIFICATIONS EJ-SQ 02E B-08E