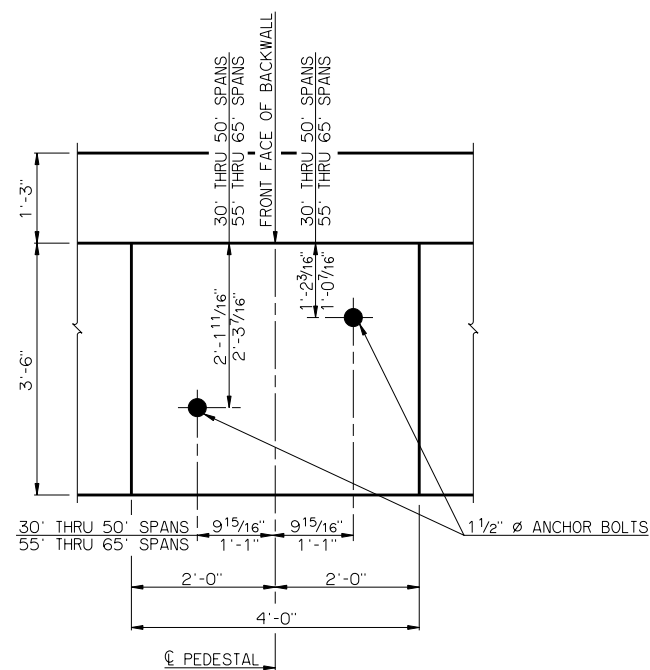
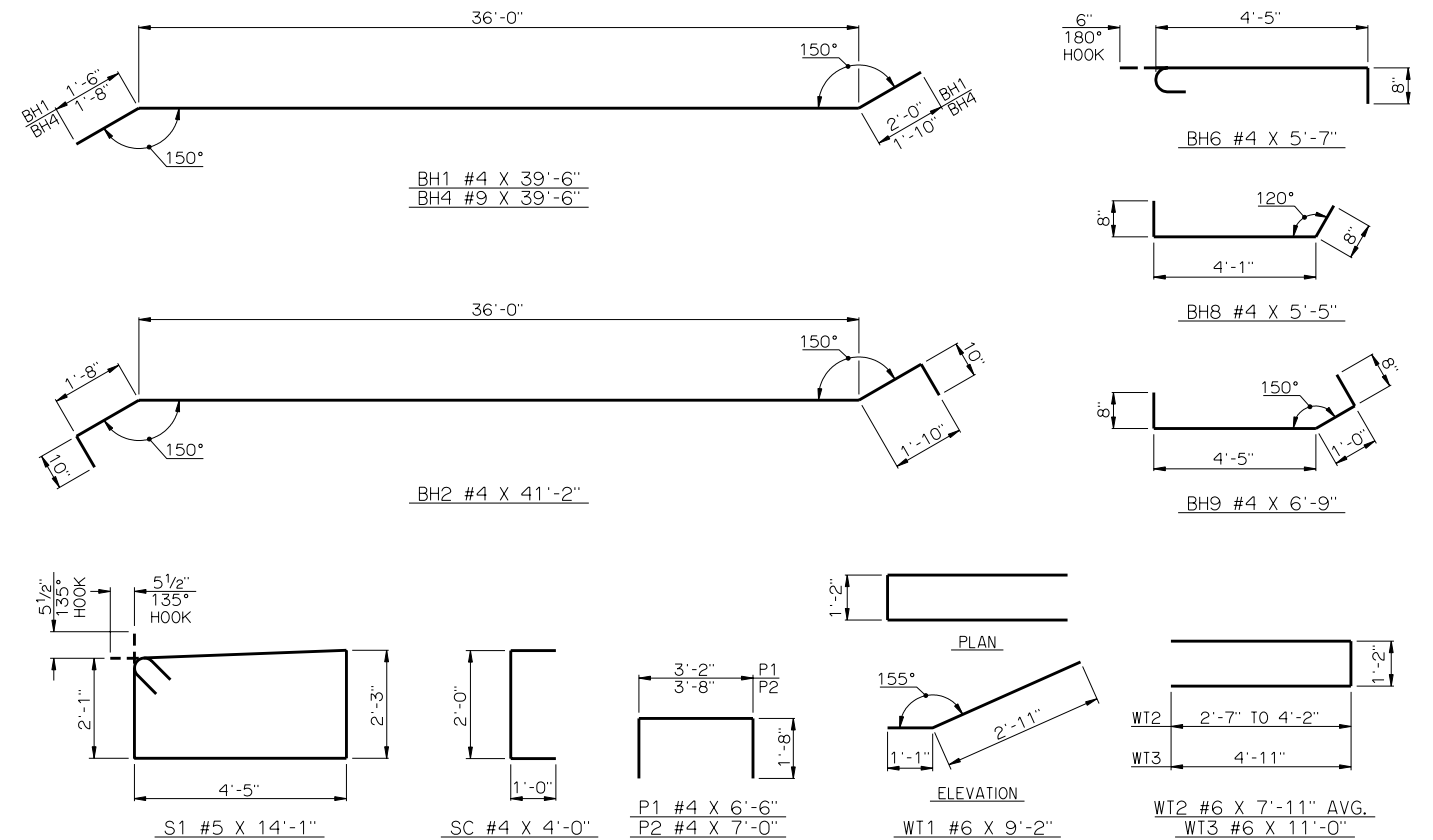


TYPICAL SECTION THRU ABUTMENT



DETAIL OF PEDESTAL WITH LAYOUT OF ANCHOR BOLTS



DETAILS OF BENT REINFORCING STEEL

BAR LIST - ONE ABUTMENT					
MARK	NO.	SIZE	FORM	LENGTH	LENGTH VARIATION
BH1	6	#4	BNT.	39'-6"	-
BH2	7	#4	BNT.	41'-2"	-
BH3	8	#9	STR.	38'-5" AVG.	37'-6" TO 39'-4"
BH4	2	#9	BNT.	39'-6"	-
BH5	1	#4	STR.	37'-6"	-
BH6	15	#4	BNT.	5'-7"	-
BH7	2	#9	STR.	12'-9"	-
BH8	3	#4	BNT.	5'-5"	-
BH9	3	#4	BNT.	6'-9"	-
BV1	38	#4	STR.	8'-0" AVG.	7'-10" TO 8'-2"
BV2	38	#5	STR.	8'-0" AVG.	7'-10" TO 8'-2"
BV3	8	#6	STR.	7'-10"	-
P1	20	#4	BNT.	6'-6"	-
P2	16	#4	BNT.	7'-0"	-
S1	38	#5	BNT.	14'-1"	-
SC	6	#4	BNT.	4'-0"	-
WT1	2	#6	BNT.	9'-2"	-
WT2	4	#6	BNT.	7'-11" AVG.	6'-4" TO 9'-6"
WT3	18	#6	BNT.	11'-0"	-

- ① NO. INCLUDES TWO SETS OF 4 BARS
- ② NO. INCLUDES TWO SETS OF 19 BARS
- ③ NO. INCLUDES TWO SETS OF 2 BARS

APPROVED BY BRIDGE ENGINEER *Dora J. Rusch* DATE 10/16/08

OKLAHOMA DEPARTMENT OF TRANSPORTATION
COUNTY BRIDGE STANDARD (ENGLISH)

ABUTMENT DETAILS
TYPE II AND TYPE B P.C. BEAMS
(SHEET NO. 2 OF 2)

32' CLEAR ROADWAY - CONVENTIONAL - SKEWED 30°

1999 STANDARD SPECIFICATIONS CB32-C-SK30-ABUT-PC2-2 OOE CB-571E