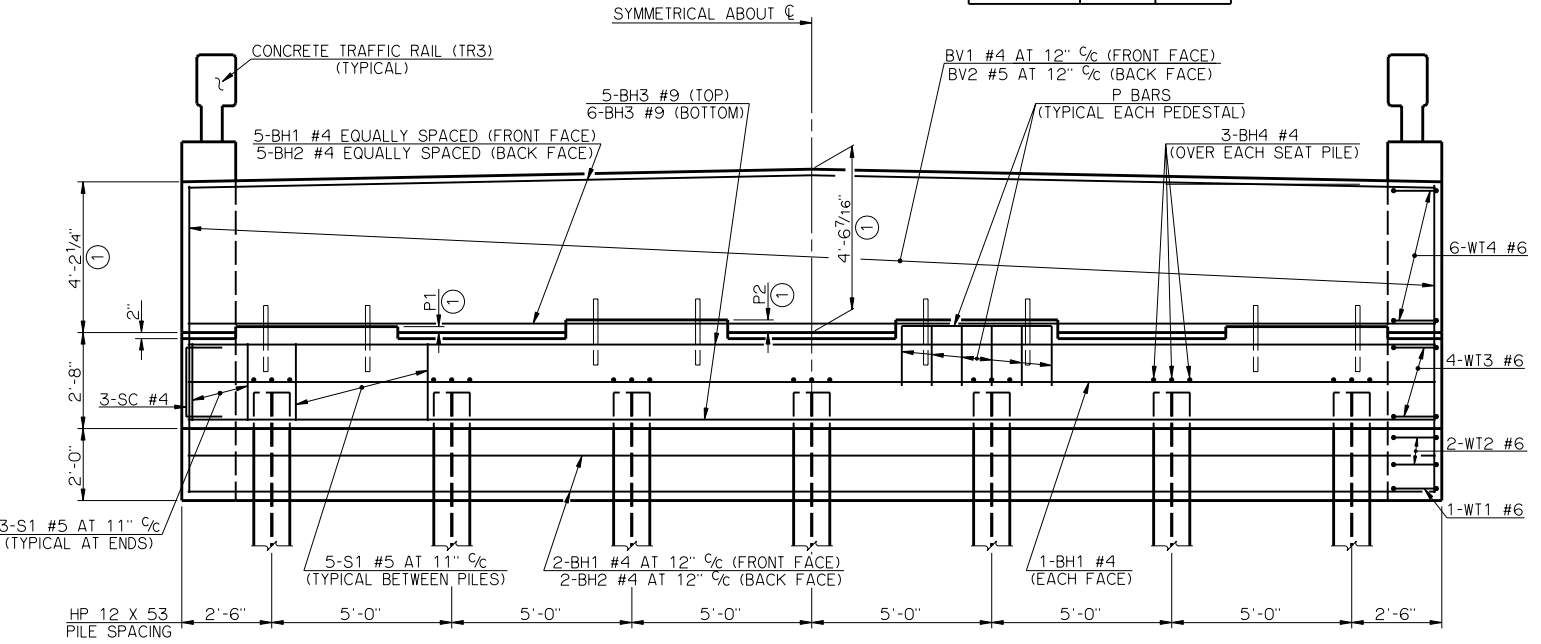


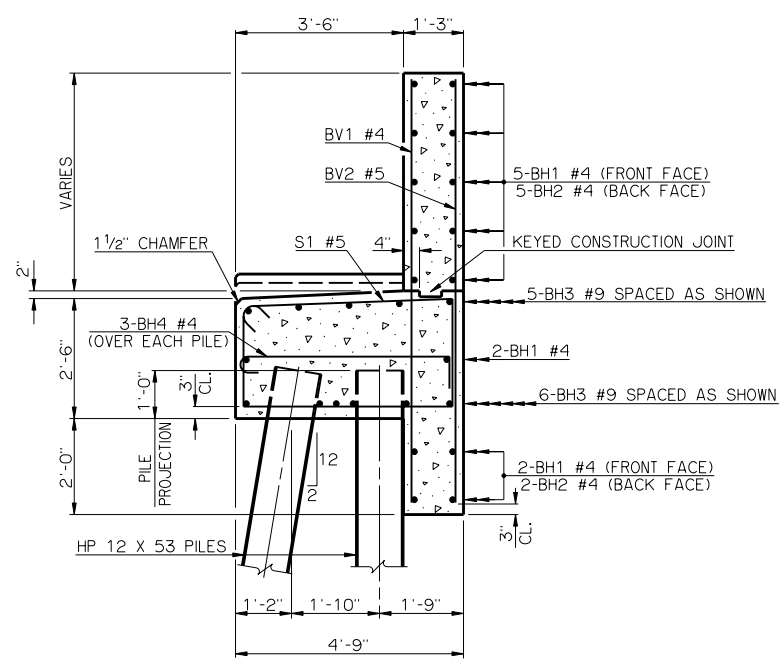
PILE SCHEDULE	
SPAN	MAXIMUM FACTORED PILE LOAD
60'	57.9 TON
65'	60.1 TON
70'	62.8 TON
75'	65.0 TON
80'	67.2 TON
85'	69.4 TON
90'	71.5 TON

PLAN

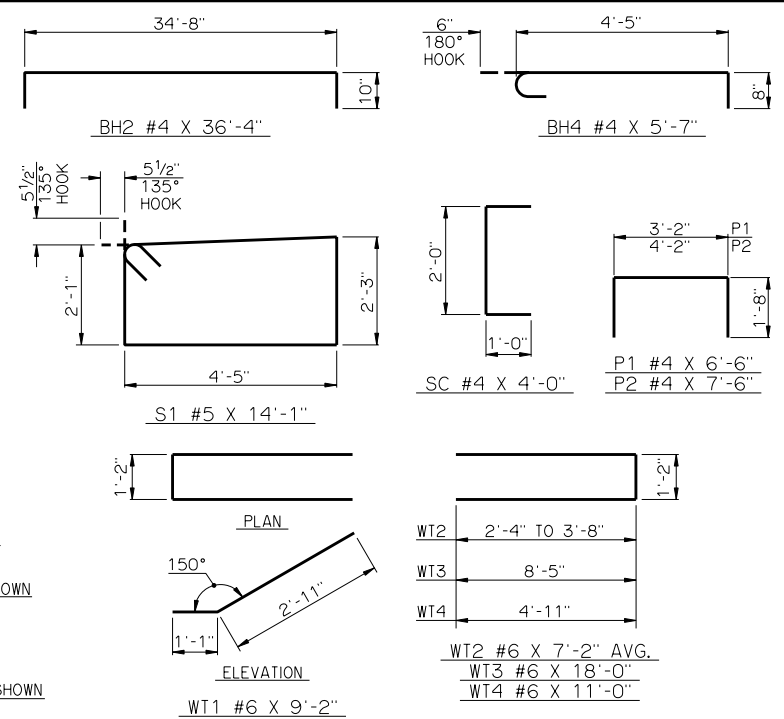
PEDESTAL DIMENSIONS		
BEAM TYPE	P1	P2
TYPE III	2"	4 <sup>9</sup> / <sub>16</sub> "
TYPE C	7"	9 <sup>9</sup> / <sub>16</sub> "



ELEVATION



TYPICAL SECTION THRU ABUTMENT



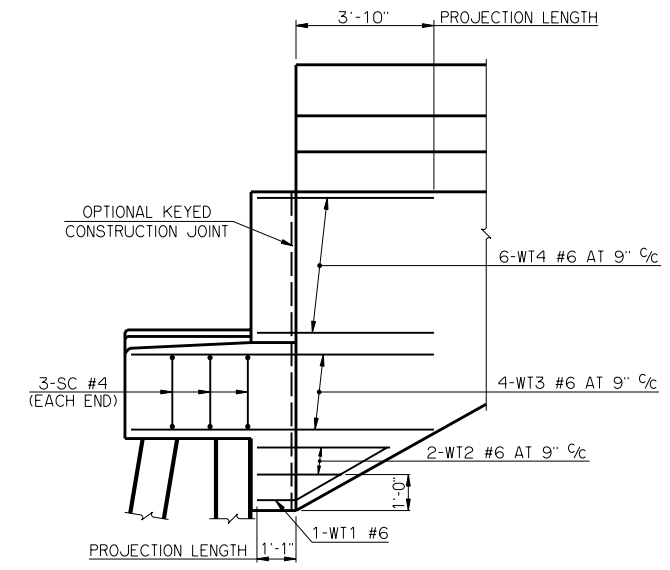
DETAILS OF BENT REINFORCING STEEL

BAR LIST - ONE ABUTMENT					
MARK	NO.	SIZE	FORM	LENGTH	LENGTH VARIATION
BH1	9	#4	STR.	34'-8"	-
BH2	7	#4	BNT.	36'-4"	-
BH3	11	#9	STR.	34'-8"	-
BH4	21	#4	BNT.	5'-7"	-
BV1	36	#4	STR.	8'-7" AVG.	8'-5" TO 8'-9"
BV2	36	#5	STR.	8'-7" AVG.	8'-5" TO 8'-9"
P1	24	#4	BNT.	6'-6"	-
P2	16	#4	BNT.	7'-6"	-
S1	36	#5	BNT.	14'-1"	-
SC	6	#4	BNT.	4'-0"	-
WT1	2	#6	BNT.	9'-2"	-
WT2	4	#6	BNT.	7'-2" AVG.	5'-10" TO 8'-6"
WT3	8	#6	BNT.	18'-0"	-
WT4	12	#6	BNT.	11'-0"	-

③ NO. INCLUDES TWO SETS OF 18 BARS  
 ④ NO. INCLUDES TWO SETS OF 2 BARS

SUMMARY OF QUANTITIES - ONE ABUTMENT ⑤		
ITEM	UNIT	TOTAL
SUBSTRUCTURE EXCAVATION COMMON	CY	75.00
GRANULAR BACKFILL	CY	46.00
CLASS A CONCRETE	CY	28.20
REINFORCING STEEL	LB	3500.00
PILES, FURNISHED (HP 12 x 53)	LF	-
PILES, DRIVEN (HP 12 x 53)	LF	-
6" PERFORATED PIPE UNDERDRAIN ROUND	LF	32.00
6" NON-PERF. PIPE UNDERDRAIN RND.	LF	-

⑤ EXCLUDES WINGS  
 ① DIMENSIONS ARE FROM TOP OF BRIDGE SEAT AT FRONT FACE OF BACKWALL.  
 ② ALL WT WING REINFORCING STEEL TIED TO THE ABUTMENT BRIDGE SEAT, BACKWALL AND CURTAIN WALL REINFORCING STEEL MUST BE IN PLACE PRIOR TO POURING ABUTMENT CONCRETE. FOR ADDITIONAL INFORMATION SEE WING DETAILS.



SIDE VIEW

APPROVED BY BRIDGE ENGINEER *Robert J. Rusch* DATE 10/16/08  
 OKLAHOMA DEPARTMENT OF TRANSPORTATION  
 COUNTY BRIDGE STANDARD (ENGLISH)  
**ABUTMENT DETAILS**  
**TYPE III AND TYPE C P.C. BEAMS**  
**32' CLEAR ROADWAY - CONVENTIONAL - SKEWED 0°**  
 1999 STANDARD SPECIFICATIONS CB32-C-SKO-ABUT-PC3 OOE  
 CB-525E