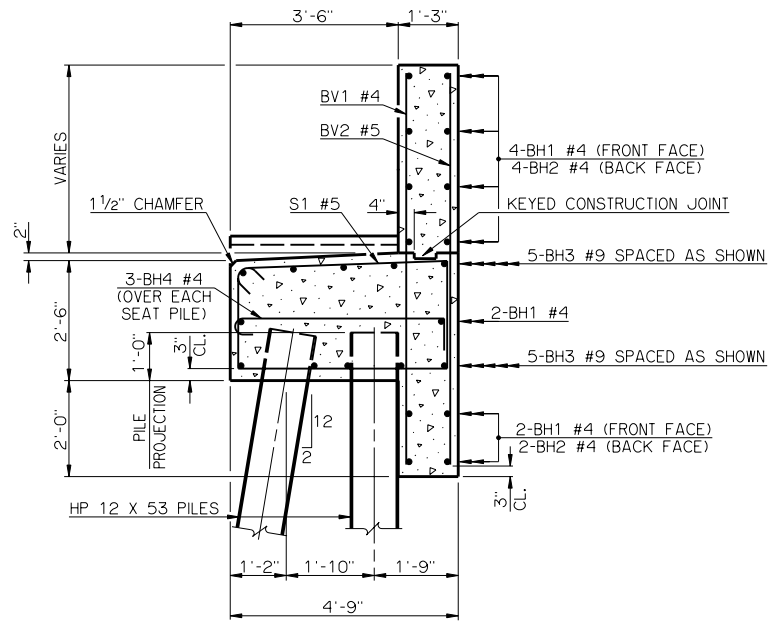
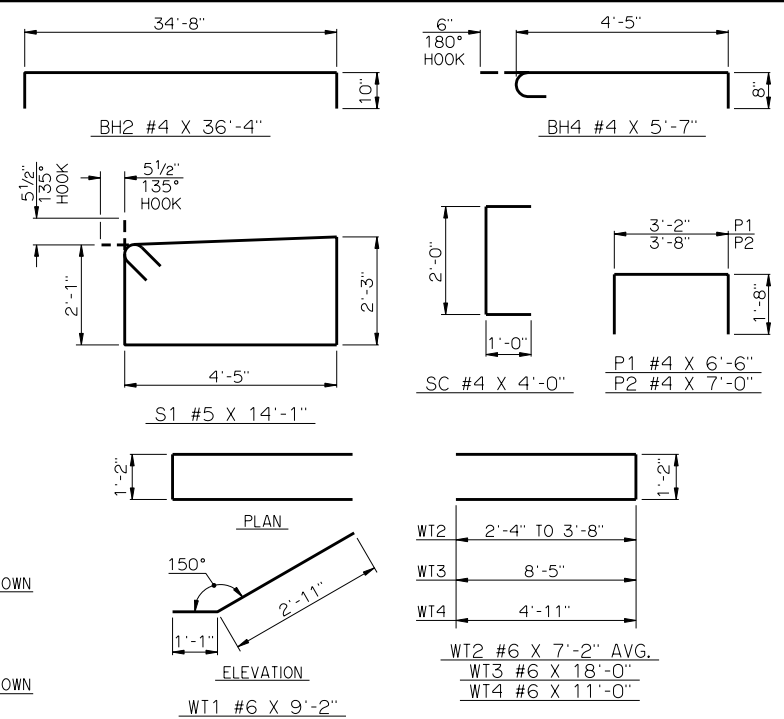


| PILE SCHEDULE |                            |
|---------------|----------------------------|
| SPAN          | MAXIMUM FACTORED PILE LOAD |
| 30'           | 58.0 TON                   |
| 35'           | 61.7 TON                   |
| 40'           | 65.2 TON                   |
| 45'           | 68.4 TON                   |
| 50'           | 71.5 TON                   |
| 55'           | 74.5 TON                   |
| 60'           | 77.5 TON                   |
| 65'           | 80.4 TON                   |

| PEDESTAL DIMENSIONS |    |         |
|---------------------|----|---------|
| BEAM TYPE           | P1 | P2      |
| TYPE II             | 2" | 4 3/16" |
| TYPE B              | 4" | 6 3/16" |



TYPICAL SECTION THRU ABUTMENT



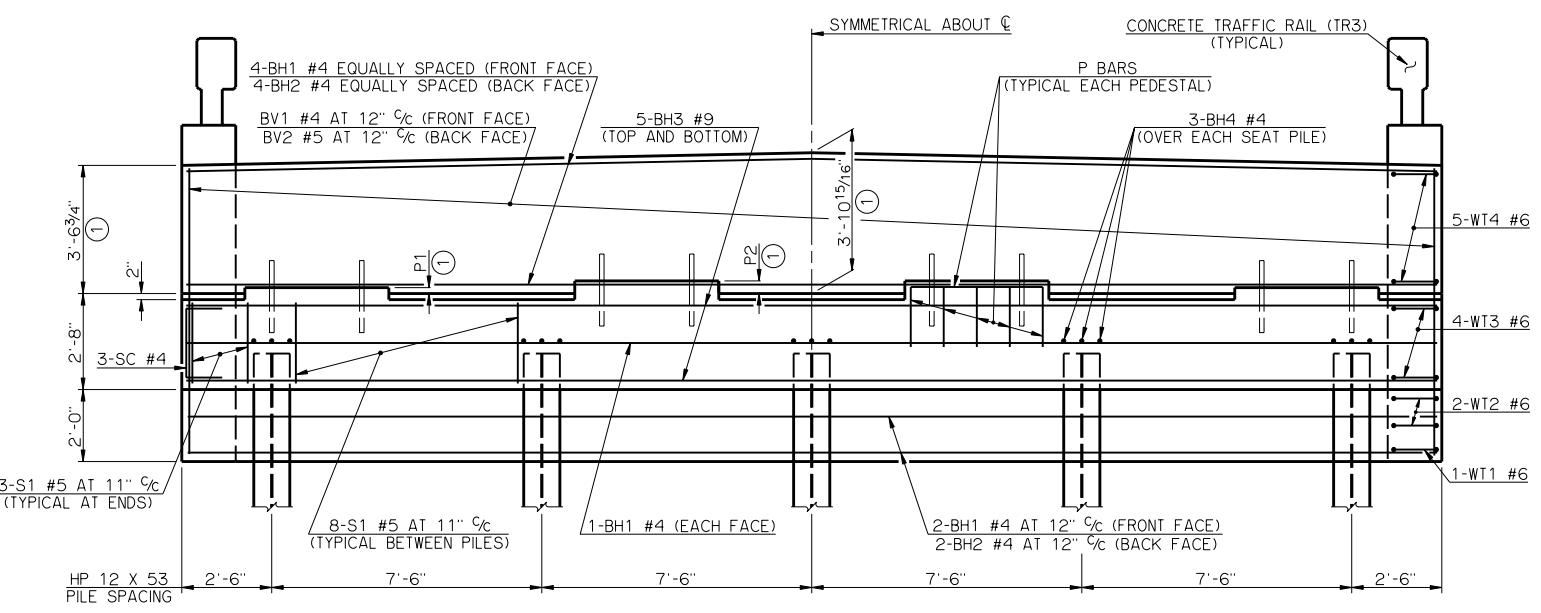
DETAILS OF BENT REINFORCING STEEL

| BAR LIST - ONE ABUTMENT |     |      |      |            |                  |
|-------------------------|-----|------|------|------------|------------------|
| MARK                    | NO. | SIZE | FORM | LENGTH     | LENGTH VARIATION |
| BH1                     | 8   | #4   | STR. | 34'-8"     | -                |
| BH2                     | 6   | #4   | BNT. | 36'-4"     | -                |
| BH3                     | 10  | #9   | STR. | 34'-8"     | -                |
| BH4                     | 15  | #4   | BNT. | 5'-7"      | -                |
| BV1                     | 36  | #4   | STR. | 8'-0" AVG. | 7'-10" TO 8'-2"  |
| BV2                     | 36  | #5   | STR. | 8'-0" AVG. | 7'-10" TO 8'-2"  |
| P1                      | 20  | #4   | BNT. | 6'-6"      | -                |
| P2                      | 16  | #4   | BNT. | 7'-0"      | -                |
| S1                      | 38  | #5   | BNT. | 14'-1"     | -                |
| SC                      | 6   | #4   | BNT. | 4'-0"      | -                |
| WT1                     | 2   | #6   | BNT. | 9'-2"      | -                |
| WT2                     | 4   | #6   | BNT. | 7'-2" AVG. | 5'-10" TO 8'-6"  |
| WT3                     | 8   | #6   | BNT. | 18'-0"     | -                |
| WT4                     | 10  | #6   | BNT. | 11'-0"     | -                |

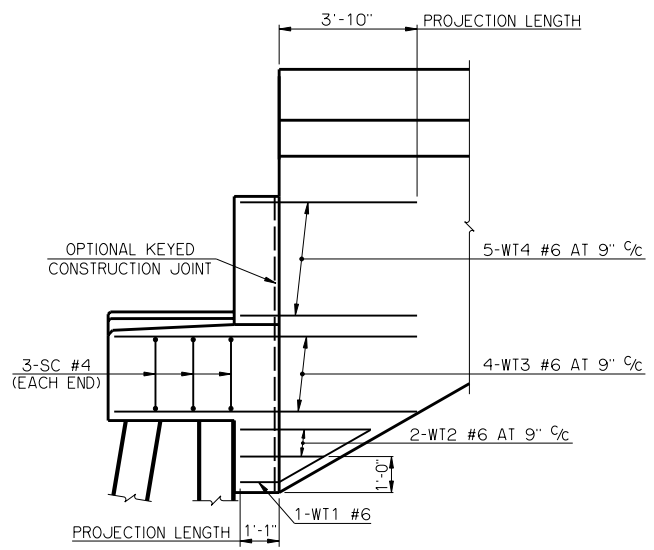
③ NO. INCLUDES TWO SETS OF 18 BARS  
 ④ NO. INCLUDES TWO SETS OF 2 BARS

| SUMMARY OF QUANTITIES - ONE ABUTMENT ⑤ |      |          |
|--|------|----------|
| ITEM                                   | UNIT | TOTAL    |
| SUBSTRUCTURE EXCAVATION COMMON         | CY   | 70.00    |
| GRANULAR BACKFILL                      | CY   | 40.00    |
| CLASS A CONCRETE                       | CY   | 26.40    |
| REINFORCING STEEL                      | LB   | 3,250.00 |
| PILES, FURNISHED (HP 12 x 53)          | LF   | -        |
| PILES, DRIVEN (HP 12 x 53)             | LF   | -        |
| 6" PERFORATED PIPE UNDERDRAIN ROUND    | LF   | 32.00    |
| 6" NON-PERF. PIPE UNDERDRAIN RND.      | LF   | -        |

⑤ EXCLUDES WINGS  
 ① DIMENSIONS ARE FROM TOP OF BRIDGE SEAT AT FRONT FACE OF BACKWALL.  
 ② ALL WT WING REINFORCING STEEL TIED TO THE ABUTMENT BRIDGE SEAT, BACKWALL AND CURTAIN WALL REINFORCING STEEL MUST BE IN PLACE PRIOR TO POURING ABUTMENT CONCRETE. FOR ADDITIONAL INFORMATION SEE WING DETAILS.



ELEVATION



SIDE VIEW

APPROVED BY BRIDGE ENGINEER *Robert A. Ruess* DATE 10/16/08  
 OKLAHOMA DEPARTMENT OF TRANSPORTATION  
 COUNTY BRIDGE STANDARD (ENGLISH)  
**ABUTMENT DETAILS**  
**TYPE II AND TYPE B P.C. BEAMS**  
**32' CLEAR ROADWAY - CONVENTIONAL - SKEWED 0°**  
 1999 STANDARD SPECIFICATIONS CB32-C-SKO-ABUT-PC2 OOE  
 CB-524E