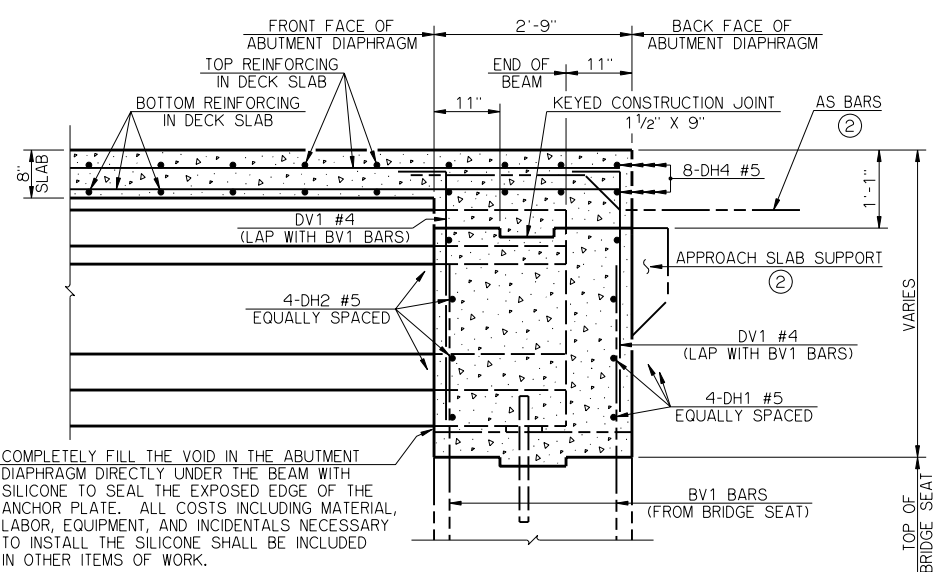
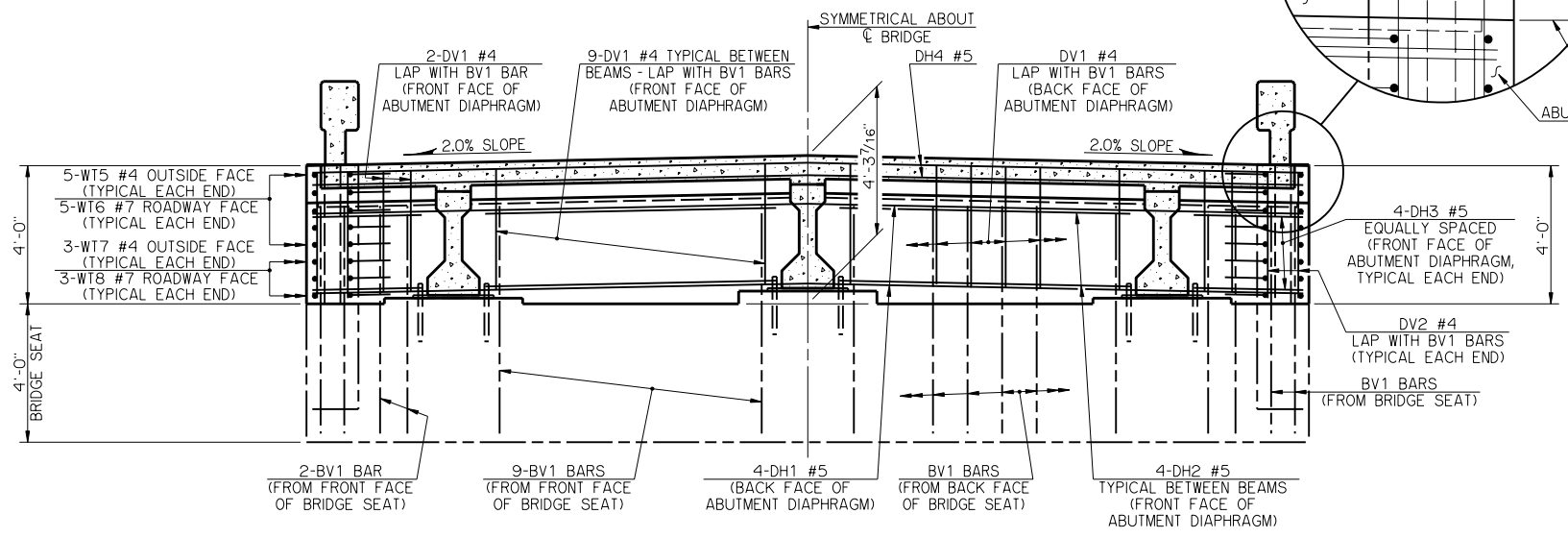
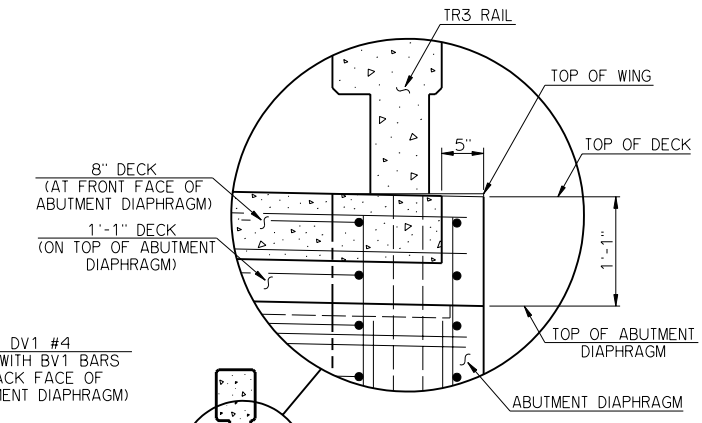


PLAN

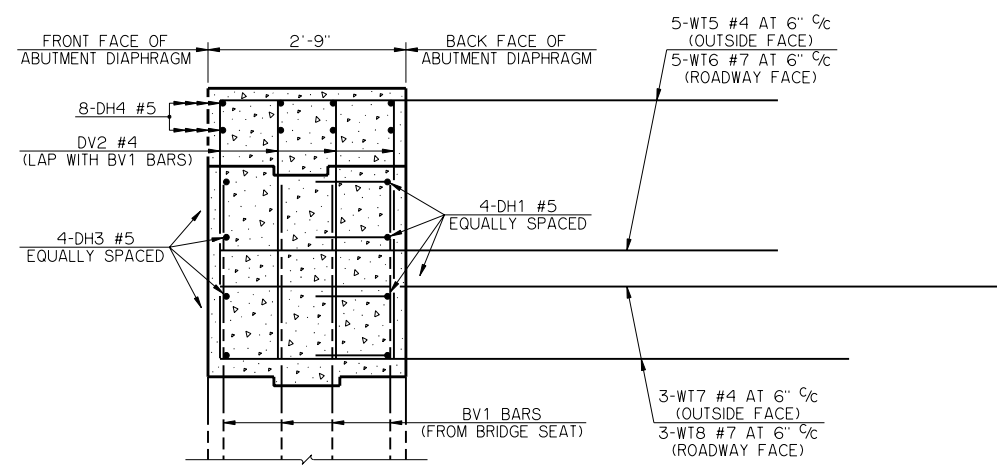


TYPICAL SECTION THRU ABUTMENT DIAPHRAGM

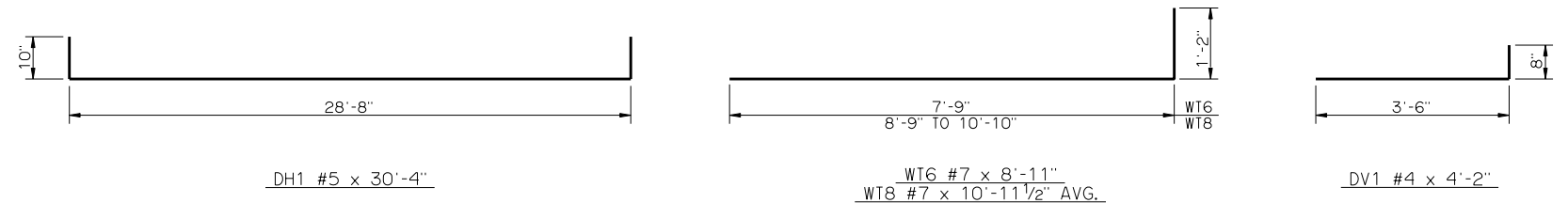
② THE AS BARS AND THE APPROACH SLAB SUPPORT ARE TO BE CONSTRUCTED ONLY IF THE BRIDGE CONTAINS THE OPTIONAL APPROACH SLABS. THE AS BARS IN THE DECK SLAB AND THE B1 AND SV1 BARS IN THE APPROACH SLAB SUPPORT SHALL BE INSTALLED BEFORE PLACING THE ABUTMENT DIAPHRAGM AND DECK SLAB CONCRETE. FOR ADDITIONAL DETAILS AND INFORMATION SEE APPROACH SLAB DETAILS.



ELEVATION



TYPICAL SECTION THRU ABUTMENT DIAPHRAGM AT WING



DETAILS OF BENT REINFORCING STEEL

| BAR LIST - ONE ABUTMENT DIAPHRAGM |     |       |      |                  |                  |  |
|-----------------------------------|-----|-------|------|------------------|------------------|--|
| MARK                              | NO. | SIZE  | FORM | LENGTH           | LENGTH VARIATION |  |
|                                   | DH1 | 4 #5  | BNT. | 30'-4"           | -                |  |
|                                   | DH2 | 8 #5  | STR. | 8'-5"            | -                |  |
|                                   | DH3 | 8 #5  | STR. | 3'-2"            | -                |  |
|                                   | DH4 | 8 #5  | STR. | 28'-8"           | -                |  |
|                                   | DV1 | 48 #4 | BNT. | 4'-2"            | -                |  |
|                                   | DV2 | 16 #4 | STR. | 3'-6"            | -                |  |
|                                   | WT5 | 10 #4 | STR. | 7'-9"            | -                |  |
|                                   | WT6 | 10 #7 | BNT. | 8'-11"           | -                |  |
| ①                                 | WT7 | 6 #4  | STR. | 9'-9 1/2" AVG.   | 8'-9" TO 10'-10" |  |
| ①                                 | WT8 | 6 #7  | BNT. | 10'-11 1/2" AVG. | 9'-11" TO 12'-0" |  |

① NO. INCLUDES TWO SETS OF 3 BARS

NOTES

DECK SLAB CONCRETE SHALL NOT BE POURED UNTIL THE ABUTMENT DIAPHRAGMS HAVE ATTAINED A STRENGTH OF 3,000 PSI.  
ALL WT WING REINFORCING STEEL TIED TO ABUTMENT DIAPHRAGM REINFORCING STEEL MUST BE IN PLACE PRIOR TO POURING THE ABUTMENT DIAPHRAGM CONCRETE.

APPROVED BY BRIDGE ENGINEER *Debra J. Nease* DATE 10/16/08  
OKLAHOMA DEPARTMENT OF TRANSPORTATION  
COUNTY BRIDGE STANDARD (ENGLISH)  
**ABUTMENT DIAPHRAGM DETAILS**  
TYPE II AND TYPE B P.C. BEAMS  
26' CLEAR ROADWAY - INTEGRAL - SKEWED 0°  
1999 STANDARD SPECIFICATIONS      CB26-I-SKO-DIA-ABUT-PC2      OOE      CB-485E