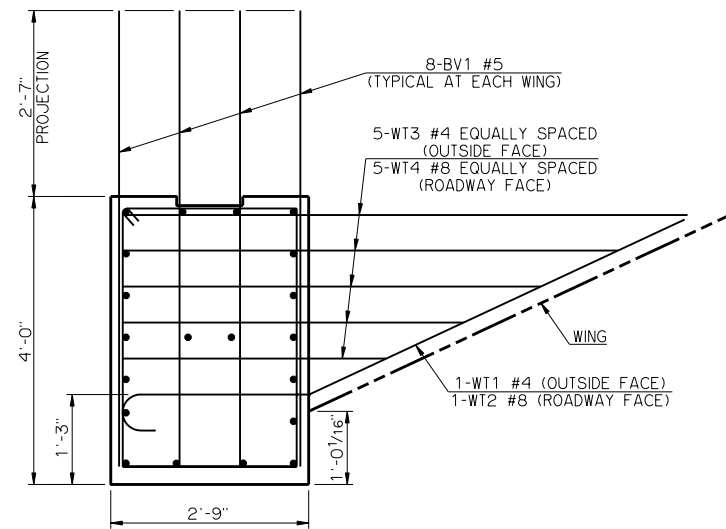


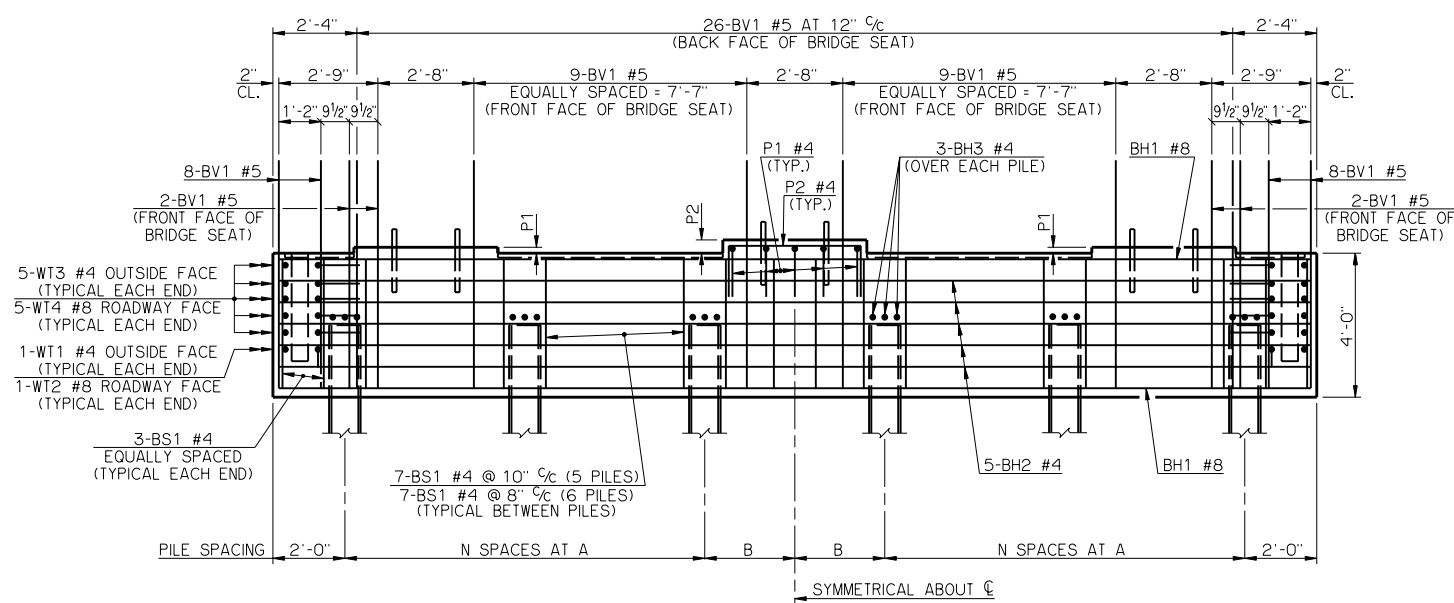
PLAN



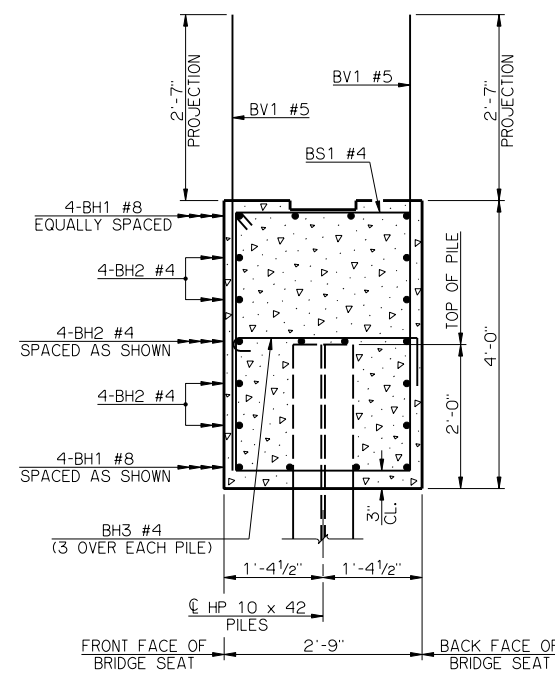
VIEW A-A

PEDESTAL DIMENSIONS		
SPAN	P1	P2
55'	8 ¹³ / ₁₆ "	11 ¹ / ₄ "
60'	6 ¹ / ₈ "	8 ⁹ / ₈ "
65'	5 ¹³ / ₁₆ "	8 ¹ / ₄ "
70'	5 ¹¹ / ₁₆ "	8 ³ / ₁₆ "
75'	2 ¹¹ / ₁₆ "	5 ³ / ₁₆ "
80'	3"	5 ⁷ / ₁₆ "
85'	2 ¹¹ / ₁₆ "	5 ³ / ₁₆ "
90'	2 ⁹ / ₁₆ "	4 ³ / ₄ "
95'	2"	4 ⁷ / ₁₆ "
100'	2"	4 ⁷ / ₁₆ "

PILE SCHEDULE					
SPAN	TOTAL NUMBER OF PILES	N SPACES	A	B	MAXIMUM FACTORED PILE LOAD
55'	5	2	6'-3"	0'-0"	68.2 TON
60'	5	2	6'-3"	0'-0"	70.7 TON
65'	5	2	6'-3"	0'-0"	73.1 TON
70'	5	2	6'-3"	0'-0"	75.4 TON
75'	6	2	5'-0"	2'-6"	66.3 TON
80'	6	2	5'-0"	2'-6"	68.4 TON
85'	6	2	5'-0"	2'-6"	70.4 TON
90'	6	2	5'-0"	2'-6"	72.6 TON
95'	6	2	5'-0"	2'-6"	74.8 TON
100'	6	2	5'-0"	2'-6"	76.6 TON



ELEVATION



TYPICAL SECTION THRU BRIDGE SEAT

BAR LIST - ONE ABUTMENT					
MARK	NO.	SIZE	FORM	LENGTH	LENGTH VARIATION
BH1	8	#8	STR.	28'-8"	-
BH2	12	#4	STR.	28'-8"	-
BV1	64	#5	STR.	6'-4"	-
P1	15	#4	BNT.	5'-9"	-
P2	12	#4	BNT.	7'-0"	-
WT1	2	#4	BNT.	5'-2"	-
WT2	2	#8	BNT.	11'-2"	-
WT3	10	#4	STR.	5'-10" AVG.	3'-8" TO 8'-0"
WT4	10	#8	BNT.	7'-0" AVG.	4'-10" TO 9'-2"
5 PILE ABUTMENT					
BS1	34	#4	BNT.	12'-9"	-
BH3	15	#4	BNT.	3'-7"	-
6 PILE ABUTMENT					
BS1	41	#4	BNT.	12'-9"	-
BH3	18	#4	BNT.	3'-7"	-

① NO. INCLUDES TWO SETS OF 5 BARS

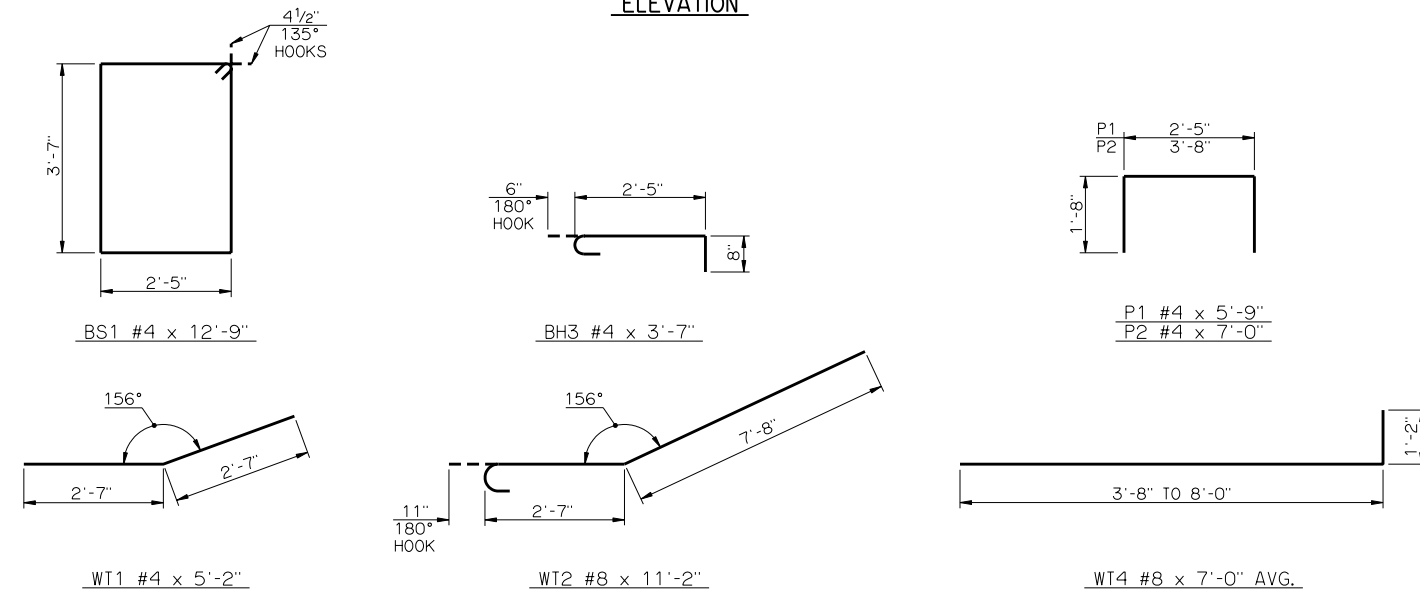
SUMMARY OF QUANTITIES - ONE ABUTMENT ②			
ITEM	UNIT	TOTAL	
SUBSTRUCTURE EXCAVATION COMMON	CY	30.00	
GRANULAR BACKFILL	CY	24.00	
CLASS A CONCRETE	CY	12.70	
REINFORCING STEEL	LB	2,070.00	
PILES, FURNISHED (HP 10 x 42)	LF	-	
PILES, DRIVEN (HP 10 x 42)	LF	-	
6" PERFORATED PIPE UNDERDRAIN ROUND	LF	27.00	
6" NON-PERF. PIPE UNDERDRAIN RND.	LF	-	

② EXCLUDES WINGS

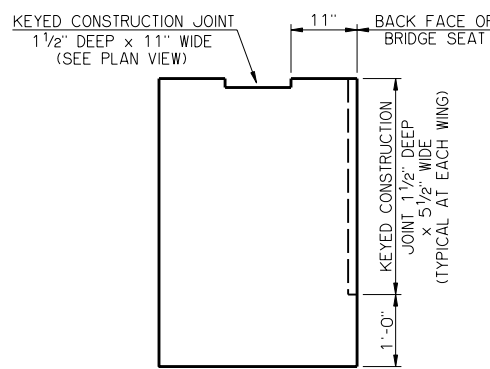
NOTES

ABUTMENT WING CONCRETE SHALL NOT BE POURED UNTIL THE ABUTMENT DIAPHRAGMS OF THE SUPERSTRUCTURE AND THE DECK SLAB CONCRETE HAVE ATTAINED A STRENGTH OF 3,000 PSI.
 ALL WT WING REINFORCING STEEL TIED TO BRIDGE SEAT REINFORCING STEEL MUST BE IN PLACE PRIOR TO POURING THE BRIDGE SEAT CONCRETE.

APPROVED BY BRIDGE ENGINEER *Robert J. Rusch* DATE 10/16/06
 OKLAHOMA DEPARTMENT OF TRANSPORTATION
 COUNTY BRIDGE STANDARD (ENGLISH)
ABUTMENT DETAILS
55' THRU 100' ROLLED BEAMS
26' CLEAR ROADWAY - INTEGRAL - SKEWED 0°
 1999 STANDARD SPECIFICATIONS CB26-I-SKO-ABUT-RB-55100 OOE
 CB-374E



DETAILS OF BENT REINFORCING STEEL



DETAIL OF CONSTRUCTION JOINTS