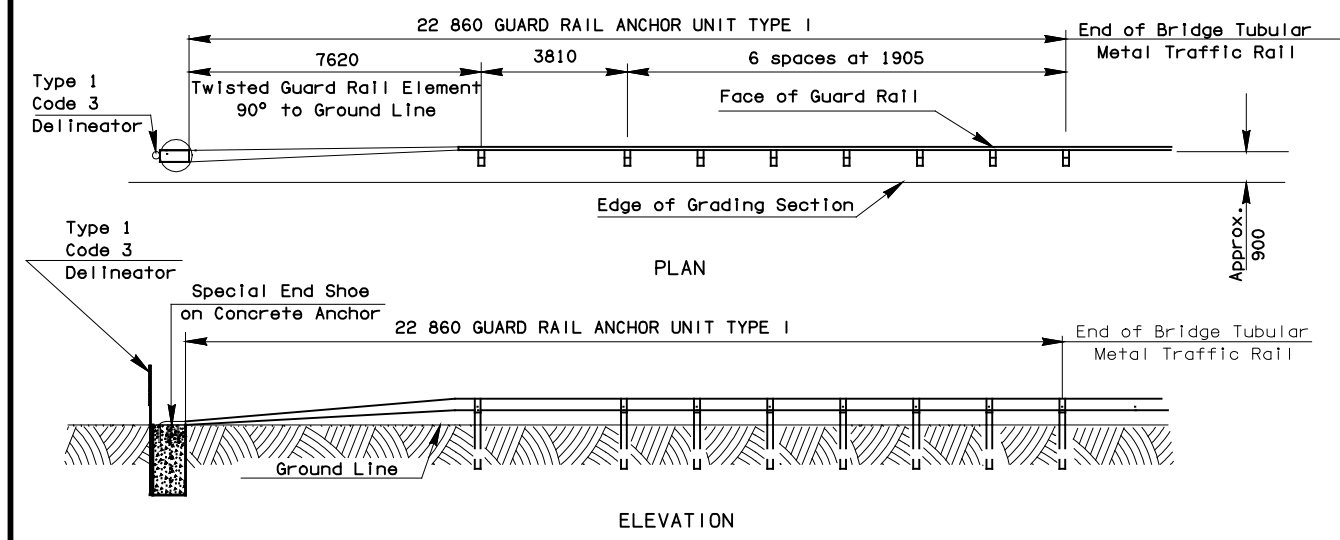
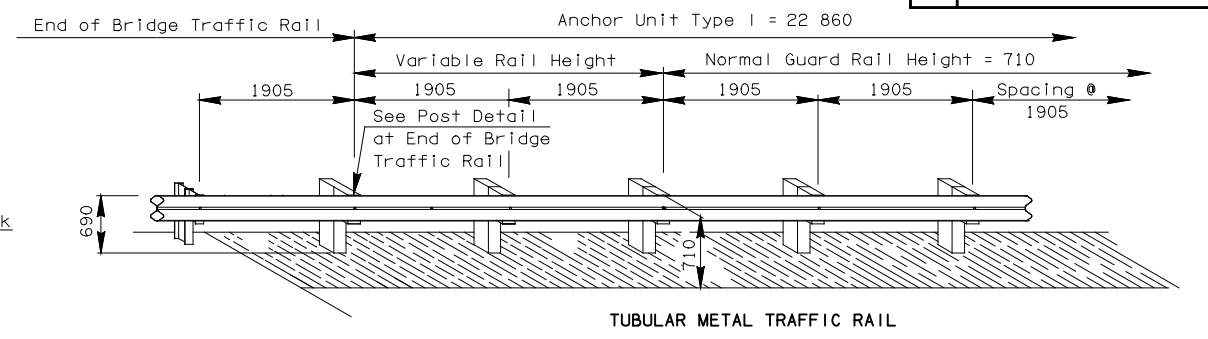
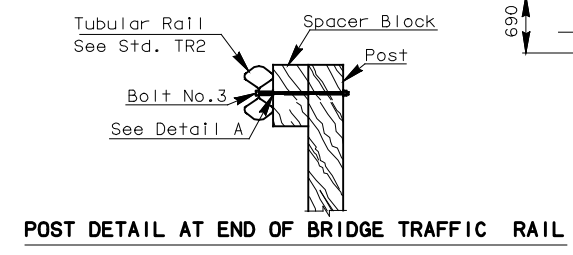


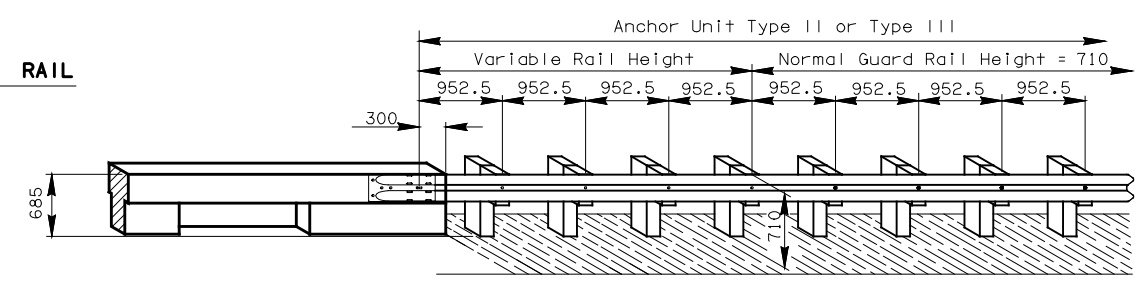
REV. NO.	DESCRIPTION	REVISIONS	DATE



**BRIDGE END GUARD RAIL ANCHOR UNIT - TYPE I**  
(USE ON BRIDGE WITH TUBULAR METAL TRAFFIC RAILS)



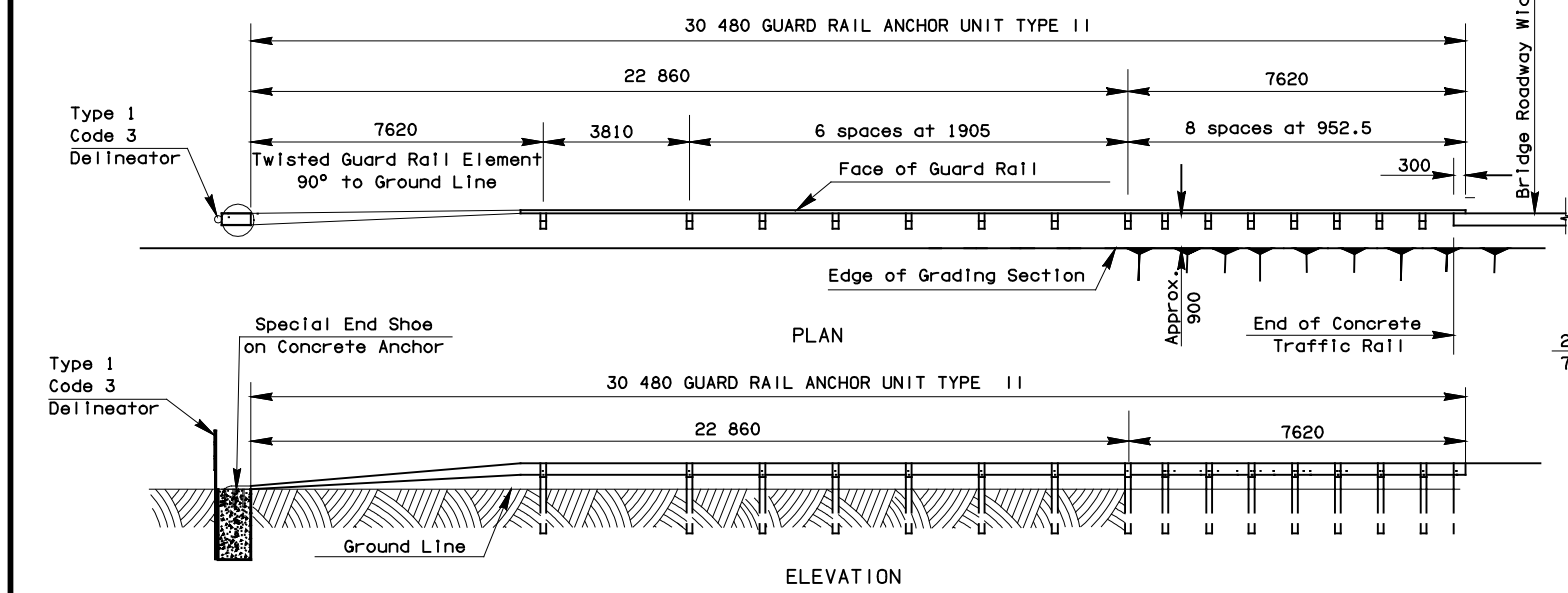
**TUBULAR METAL TRAFFIC RAIL**



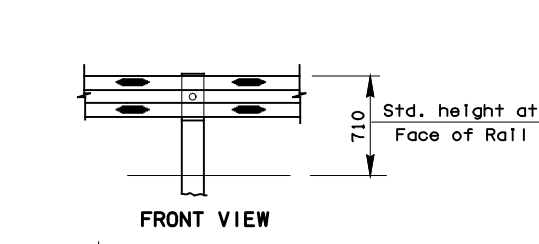
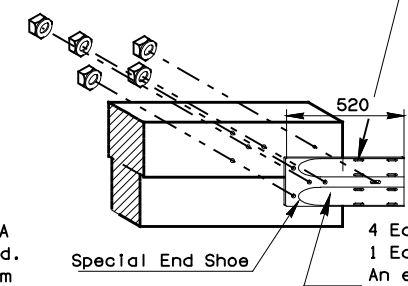
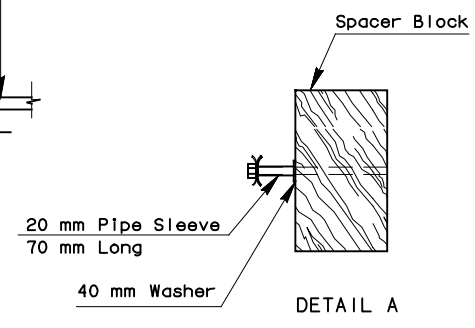
**CONCRETE TRAFFIC RAIL**  
**PICTORIAL VIEW OF ANCHOR UNITS AT END OF BRIDGE**

8 Ea. Required- Bolt No.1 & Assembly with steel washer. See Table of Bolts, Nuts, & Washers

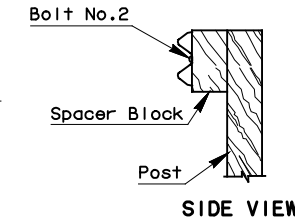
NOTE: SEE STD BEGR2 FOR DETAILS OF SPECIAL END SHOE, POSTS & SPACER BLOCK AND TABLE OF BOLTS, NUTS & WASHERS.



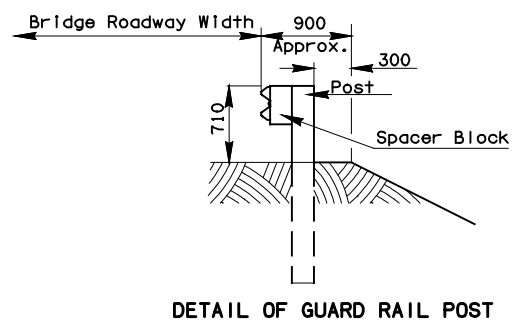
**BRIDGE END GUARD RAIL ANCHOR UNIT- TYPE II**  
(USE ON BRIDGE WITH CONCRETE TRAFFIC RAILS WHEN DESIGN SPEED IS 60 kph OR OVER)



**FRONT VIEW**



**SIDE VIEW**



**DETAIL OF GUARD RAIL POST**

See Std. DU-1 For Standard Delineator Type 1, Code 3

BASIS OF PAYMENT	
ITEM	UNIT
• Guard Rail Anchor Unit (Type I)	Ea.
• Guard Rail Anchor Unit (Type II)	Ea.
• Guard Rail Anchor Unit (Type III)	Ea.

\* Includes post, guard rail, all hardware, concrete, Type 1, Code 3 Delineator (Amber Color) and other appurtenances necessary to construct Guard Rail Anchor Unit.

APPROVED BY BRIDGE ENGINEER \_\_\_\_\_ DATE \_\_\_\_\_

**OKLAHOMA DEPT. OF TRANSPORTATION**  
**COUNTY BRIDGE STANDARD (METRIC)**  
**BRIDGE END GUARD RAIL**