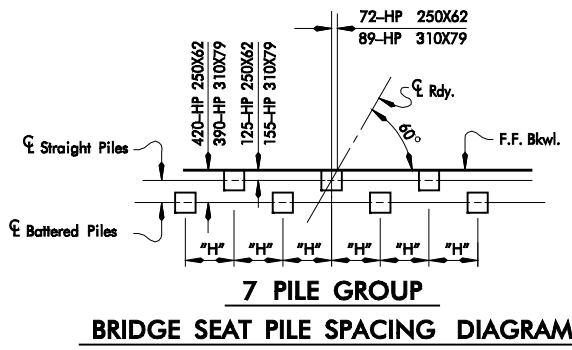
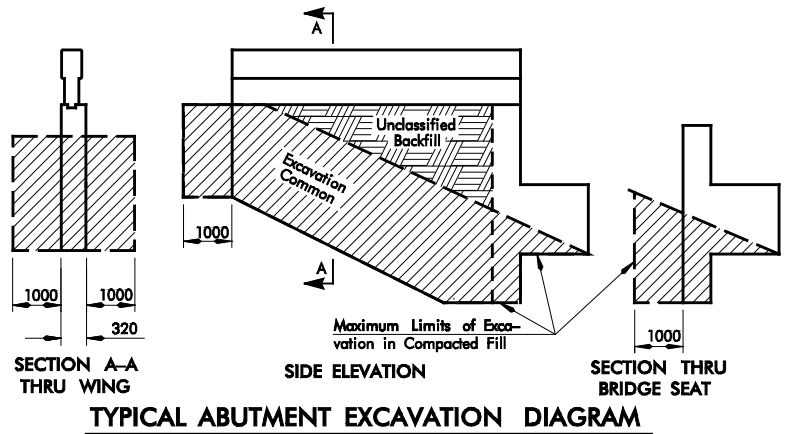
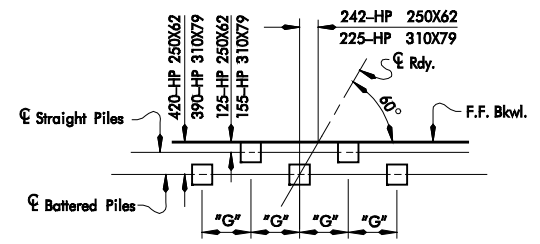


FOUNDATION PILE & LOAD SCHEDULE				
SPAN (m)	7.8 m ROADWAY		10.2 m ROADWAY	
	NUMBER OF BRIDGE SEAT PILES	AVERAGE LOAD (kN/pile)	NUMBER OF BRIDGE SEAT PILES	AVERAGE LOAD (kN/pile)
10	5 *	250	5 *	280
12	5 *	280	5 *	300
14	5 *	300	5 *	330
16	5 *	320	5 *	350
18	5 *	370	7 *	290
20	7 *	280	7 *	300
22	7 *	300	7 *	320
24	7 *	310	7 *	340
26	7 *	360	7 *	380
28	7 **	380	7 **	390
30	7 **	400	7 **	410
32	7 **	410	7 **	430

* HP 250X62 ** HP 310X79



**7 PILE GROUP
BRIDGE SEAT PILE SPACING DIAGRAM**



**5 PILE GROUP
BRIDGE SEAT PILE SPACING DIAGRAM**

DIMENSION SCHEDULE			
	SPAN LENGTH (m)	"G"	"H"
7.8 m ROADWAY	10	2130	0
	12	2130	0
	14	2130	0
	16	2130	0
	18	2130	0
	20	2130	0
	22	0	1420
	24	0	1420
	26	0	1420
	28	0	1420
	30	0	1420
	32	0	1420
10.2 m ROADWAY	10	2740	0
	12	2740	0
	14	2740	0
	16	2740	0
	18	2740	0
	20	2740	0
	22	0	1830
	24	0	1830
	26	0	1830
	28	0	1830
	30	0	1830
	32	0	1830

ADJUSTMENTS TO QUANTITIES SHOWN
Add "B2" & "SR5" Reinforcing to quantities shown.

QUANTITIES - ONE ABUTMENT						
	SPAN (m)	CLASS A CONCRETE (m ³)	REINF STEEL (m ³)	SUBSTR EXC COMMON (m ³)	UNCL BACKFILL (m ³)	CONC. RAIL (m)
7.8 m ROADWAY	10	21.8	1800	55	13	9.9
	12	21.8	1800	55	13	9.9
	14	21.8	1800	55	13	9.9
	16	21.8	1800	55	13	9.9
	18	23.2	1880	57	19	9.9
	20	23.2	1880	57	19	9.9
	22	23.2	1880	57	19	9.9
	24	23.2	1880	57	19	9.9
	26	25.6	2030	60	25	10.9
	28	25.6	2030	60	25	10.9
	30	25.6	2030	60	25	10.9
	32	25.6	2030	60	25	10.9
10.2 m ROADWAY	10	25.3	2050	60	17	9.9
	12	25.3	2050	60	17	9.9
	14	25.3	2050	60	17	9.9
	16	25.3	2050	60	17	9.9
	18	27.0	2150	62	25	9.9
	20	27.0	2150	62	25	9.9
	22	27.0	2150	62	25	9.9
	24	27.0	2150	62	25	9.9
	26	29.6	2310	65	33	10.9
	28	29.6	2310	65	33	10.9
	30	29.6	2310	65	33	10.9
	32	29.6	2310	65	33	10.9

APPROVED BY BRIDGE ENGINEER _____ DATE _____

OKLAHOMA DEPT. OF TRANSPORTATION
COUNTY BRIDGE STANDARD (METRIC)

**ABUTMENTS FOR P.C. BEAMS
SKEWED 30° - 7.8 m AND 10.2 m RDY**

1999 SPECIFICATIONS	APCB3-1	01M
---------------------	---------	-----

ALL DIMENSIONS ON THIS SHEET IN MILLIMETERS UNLESS OTHERWISE NOTED. CB-42M