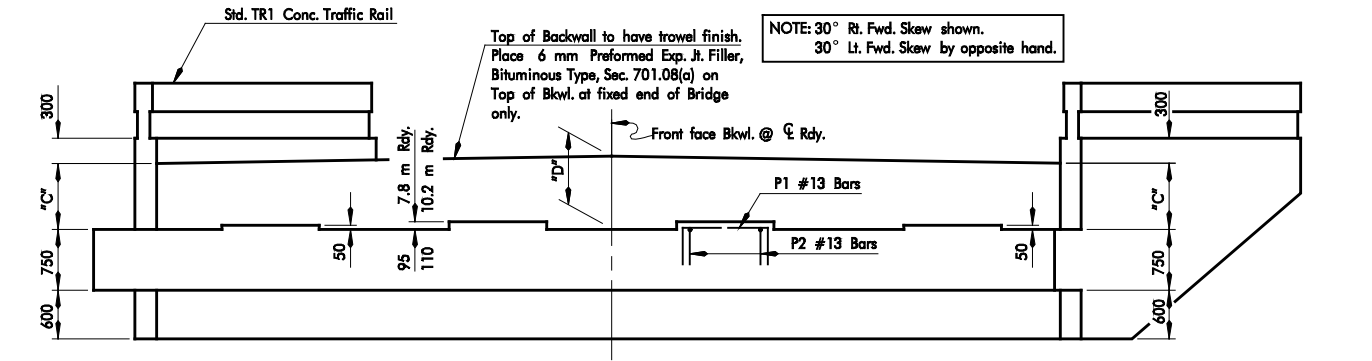
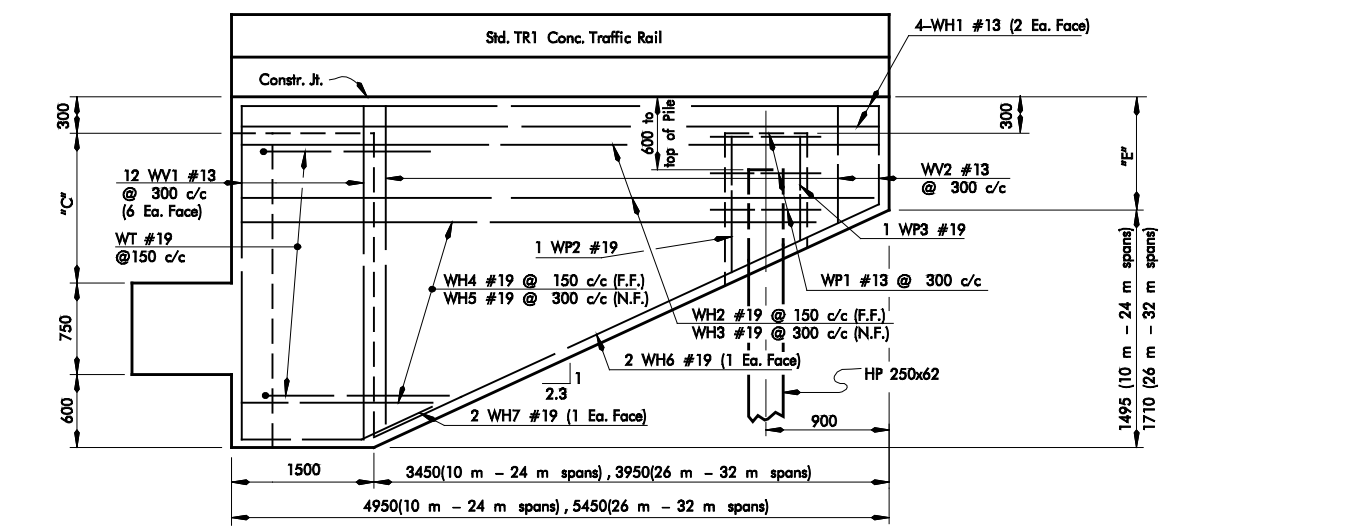


PLAN



ELEVATION



WING ELEVATION

NOTE: Field Cut WH2, WH4 & WH6 bars as necessary to clear pile.

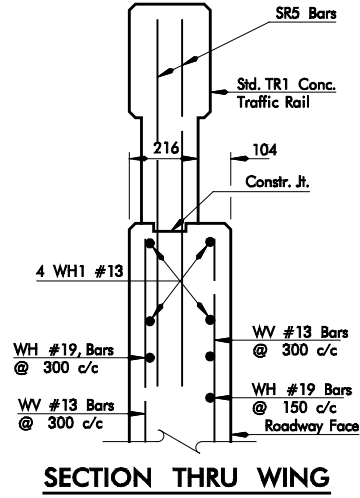
NOTES: All traffic rail bars shall be in place before wingwalls are poured.

- 1 3 bars over each bridge seat pile
- 2 2215 to 2295
- 3 2215 to 2315
- 4 2445 to 2525
- 5 2445 to 2545
- 6 2670 to 2750
- 7 2670 to 2770
- 8 2130 to 4550
- 9 2130 to 4200
- 10 2130 to 4900
- 11 1020 to 2450
- 12 1250 to 2680
- 13 1265 to 2825

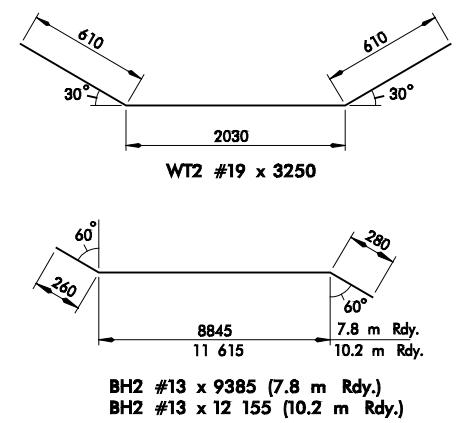
BAR LIST-ONE ABUTMENT 10 m THRU 16 m SPANS				
MARK NO.	SIZE	FORM	LENGTH	
B1	5 #29	Sir.	12 255	
B2	1 #13	Sir.	950	
B3	4 #32	Sir.	9485	
B4	4 #32	Sir.	12 255	
BH1	7 #13	Sir.	9485	
BH1	7 #13	Sir.	12 255	
BH2	5 #13	Bnt.	9385	
BH2	5 #13	Bnt.	12 155	
BV1	31 #13	Sir.	2255 Avg.	2
BV1	40 #13	Sir.	2265 Avg.	3
BV2	31 #16	Sir.	2255 Avg.	2
BV2	40 #16	Sir.	2265 Avg.	3
P1	12 #13	Bnt.	2040	
P2	16 #13	Bnt.	1570	
S	31 #13	Bnt.	3460	
S	40 #13	Bnt.	3460	
WH1	8 #13	Sir.	4850	
WH2	14 #19	Sir.	4850	
WH3	8 #19	Sir.	4850	
WH4	16 #19	Sir.	3340 Avg.	8
WH5	8 #19	Sir.	3165 Avg.	9
WH6	4 #19	Sir.	3710	
WH7	4 #19	Bnt.	2060	
WP1	8 #13	Bnt.	1880	
WP2	2 #19	Sir.	1200	
WP3	2 #19	Sir.	985	
WT1	13 #19	Bnt.	2435	
WT2	13 #19	Bnt.	3250	
WV1	24 #13	Sir.	2490	
WV2	48 #13	Sir.	1735 Avg.	11

BAR LIST-ONE ABUTMENT 18 m THRU 24 m SPANS				
MARK NO.	SIZE	FORM	LENGTH	
B1	5 #29	Sir.	12 255	
B2	1 #13	Sir.	950	
B3	4 #32	Sir.	9485	
B4	4 #32	Sir.	12 255	
BH1	7 #13	Sir.	9485	
BH1	7 #13	Sir.	12 255	
BH2	5 #13	Bnt.	9385	
BH2	5 #13	Bnt.	12 155	
BV1	31 #13	Sir.	2485 Avg.	4
BV1	40 #13	Sir.	2495 Avg.	5
BV2	31 #16	Sir.	2485 Avg.	4
BV2	40 #16	Sir.	2495 Avg.	5
P1	12 #13	Bnt.	2040	
P2	16 #13	Bnt.	1570	
S	31 #13	Bnt.	3460	
S	40 #13	Bnt.	3460	
WH1	8 #13	Sir.	4850	
WH2	14 #19	Sir.	4850	
WH3	8 #19	Sir.	4850	
WH4	16 #19	Sir.	3340 Avg.	8
WH5	8 #19	Sir.	3165 Avg.	9
WH6	4 #19	Sir.	3710	
WH7	4 #19	Bnt.	2060	
WP1	10 #13	Bnt.	1880	
WP2	2 #19	Sir.	1430	
WP3	2 #19	Sir.	1215	
WT1	13 #19	Bnt.	2435	
WT2	13 #19	Bnt.	3250	
WV1	24 #13	Sir.	2720	
WV2	48 #13	Sir.	1965 Avg.	12

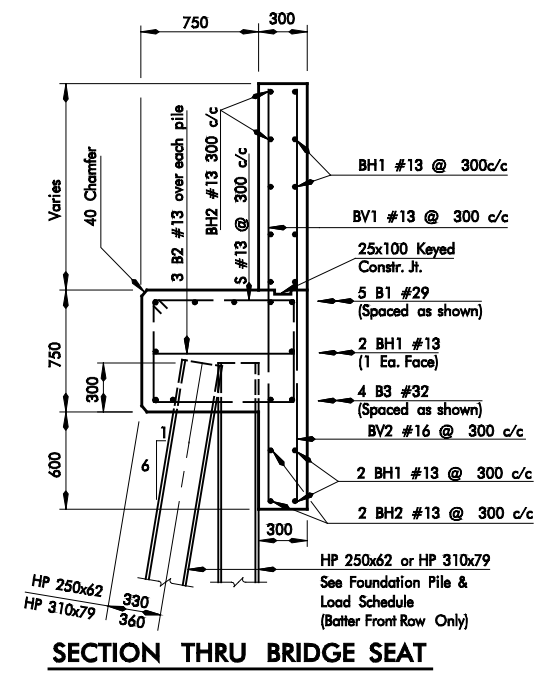
BAR LIST-ONE ABUTMENT 26 m THRU 32 m SPANS				
MARK NO.	SIZE	FORM	LENGTH	
B1	5 #29	Sir.	12 255	
B2	1 #13	Sir.	950	
B3	4 #32	Sir.	9485	
B4	4 #32	Sir.	12 255	
BH1	7 #13	Sir.	9485	
BH1	7 #13	Sir.	12 255	
BH2	5 #13	Bnt.	9385	
BH2	5 #13	Bnt.	12 155	
BV1	31 #13	Sir.	2710 Avg.	6
BV1	40 #13	Sir.	2720 Avg.	7
BV2	31 #16	Sir.	2710 Avg.	6
BV2	40 #16	Sir.	2720 Avg.	7
P1	12 #13	Bnt.	2040	
P2	16 #13	Bnt.	1570	
S	31 #13	Bnt.	3460	
S	40 #13	Bnt.	3460	
WH1	8 #13	Sir.	5350	
WH2	14 #19	Sir.	5350	
WH3	8 #19	Sir.	5350	
WH4	18 #19	Sir.	3515 Avg.	10
WH5	10 #19	Sir.	3515 Avg.	10
WH6	4 #19	Sir.	4250	
WH7	4 #19	Bnt.	2060	
WP1	10 #13	Bnt.	1880	
WP2	2 #19	Sir.	1445	
WP3	2 #19	Sir.	1230	
WT1	13 #19	Bnt.	2435	
WT2	13 #19	Bnt.	3250	
WV1	24 #13	Sir.	2950	
WV2	52 #13	Sir.	2045 Avg.	13



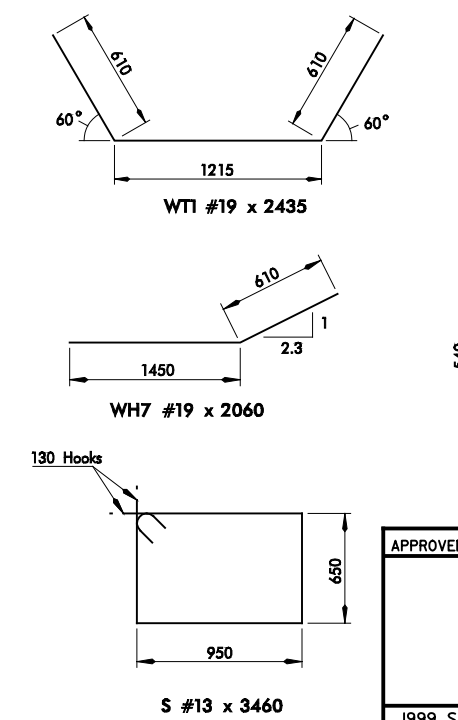
SECTION THRU WING



DIMENSION SCHEDULE				
SPAN LENGTH (m)	"C" "D" "E"			
		"C"	"D"	"E"
10	968	1045	1123	7.8m ROADWAY
12	968	1045	1123	
14	968	1045	1123	
16	968	1045	1123	
18	1197	1274	1352	
20	1197	1274	1352	
22	1197	1274	1352	
24	1197	1274	1352	
26	1426	1503	1366	
28	1426	1503	1366	
30	1426	1503	1366	
32	1426	1503	1366	
10	965	1066	1120	10.2m ROADWAY
12	965	1066	1120	
14	965	1066	1120	
16	965	1066	1120	
18	1194	1295	1349	
20	1194	1295	1349	
22	1194	1295	1349	
24	1194	1295	1349	
26	1423	1524	1363	
28	1423	1524	1363	
30	1423	1524	1363	
32	1423	1524	1363	



SECTION THRU BRIDGE SEAT



APPROVED BY BRIDGE ENGINEER _____ DATE _____
 OKLAHOMA DEPT. OF TRANSPORTATION
 COUNTY BRIDGE STANDARD (METRIC)
 ABUTMENTS FOR P.C. BEAMS
 SKEWED 30° - 7.8 m AND 10.2 m RDY
 1999 SPECIFICATIONS APCB2-1 01M
 ALL DIMENSIONS ON THIS SHEET IN MILLIMETERS UNLESS OTHERWISE NOTED. CB-41M