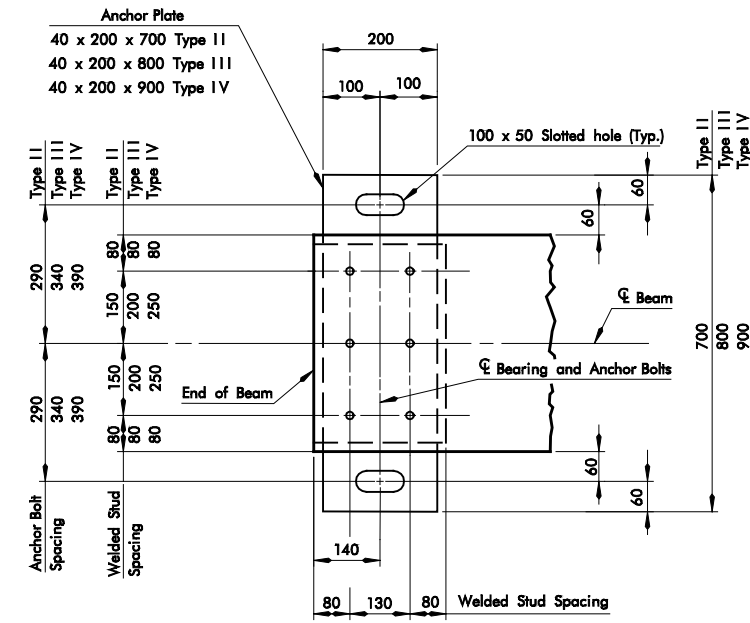


FIXED END AT PIERS

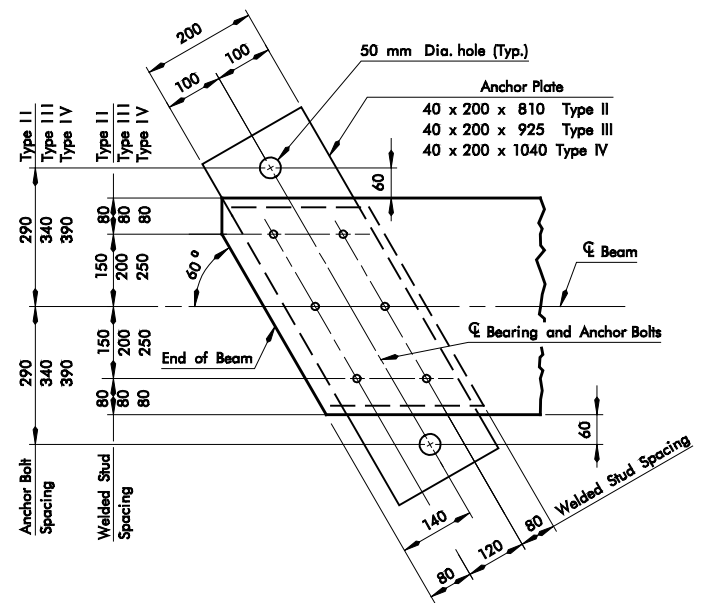
PLAN VIEW - 0° SKEW



EXPANSION END AT PIERS AND  
FIXED END AT ABUTMENTS \*

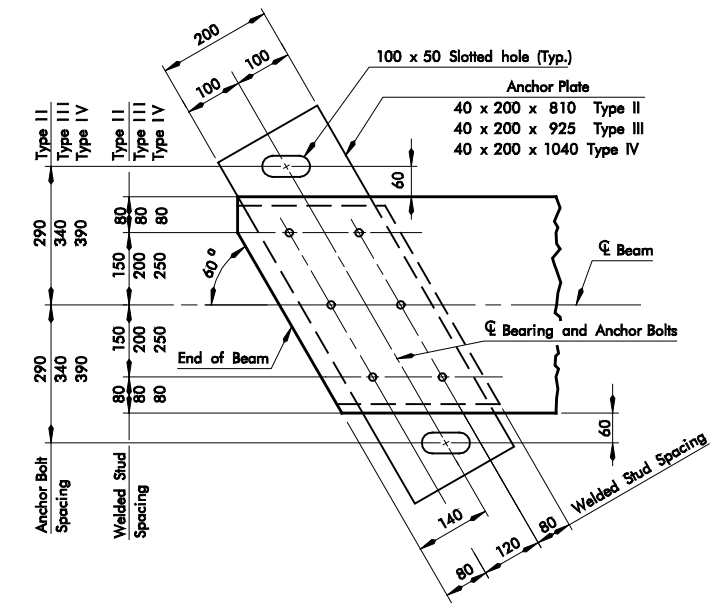
PLAN VIEW - 0° SKEW

\* FOR SINGLE SPAN BRIDGES, ANCHOR PLATES SHALL BE SLOTTED AT ONE ABUTMENT AND HOLED AT ONE ABUTMENT.



FIXED END AT PIERS

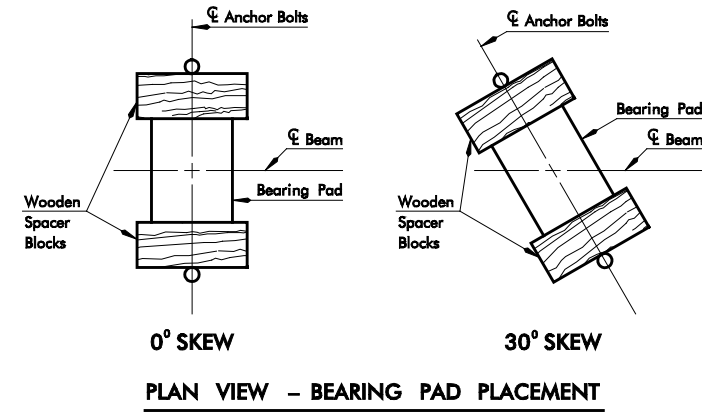
PLAN VIEW - 30° SKEW



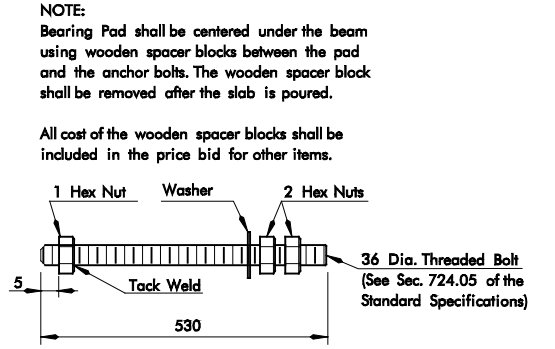
EXPANSION END AT PIERS AND  
FIXED END AT ABUTMENTS \*

PLAN VIEW - 30° SKEW

NOTE: 30° Rt. Fwd. Skew shown.  
30° Lt. Fwd. Skew by opposite Hand.



PLAN VIEW - BEARING PAD PLACEMENT

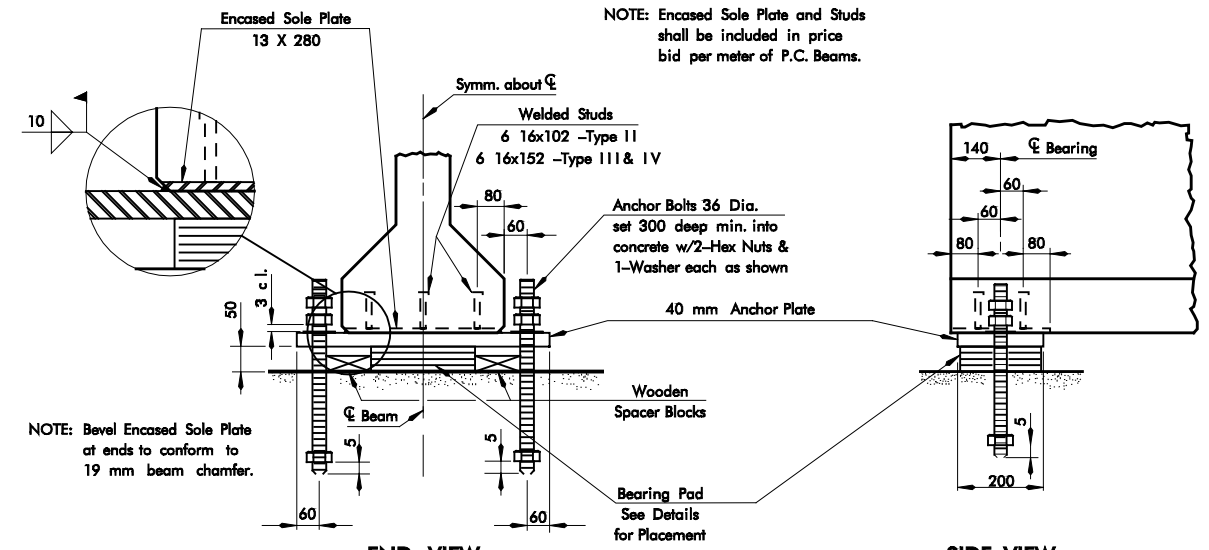


ANCHOR BOLT DETAIL

NOTE: Bearing Pad shall be centered under the beam using wooden spacer blocks between the pad and the anchor bolts. The wooden spacer block shall be removed after the slab is poured.

All cost of the wooden spacer blocks shall be included in the price bid for other items.

NOTE: Encased Sole Plate and Studs shall be included in price bid per meter of P.C. Beams.



END VIEW

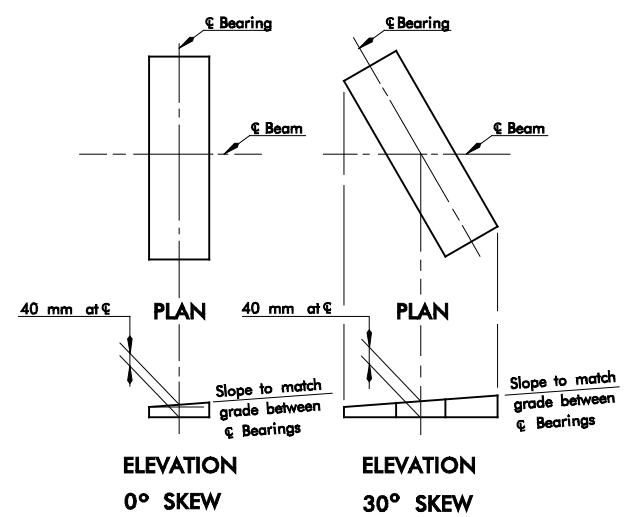
SIDE VIEW

DETAIL OF ANCHOR ASSEMBLY AT ABUTMENTS

NOTE: Bevel Encased Sole Plate at ends to conform to 19 mm beam chamfer.

SPAN m	SIZE		LAYER THICKNESS		NUMBER OF INTERIOR LAYERS
	7.8 m Rdy.	10.2 m Rdy.	EXTERIOR	INTERIOR	
10	170 X 290	180 X 310	6	10	3
12	170 X 300	180 X 330	6	10	3
14	170 X 310	180 X 340	6	10	3
16	170 X 310	180 X 340	6	10	3
18	180 X 330	190 X 350	6	10	3
20	180 X 330	190 X 350	6	10	3
22	180 X 330	190 X 350	6	10	3
24	180 X 330	190 X 350	6	10	3
26	180 X 400	190 X 430	6	10	3
28	180 X 400	190 X 430	6	10	3
30	180 X 400	190 X 430	6	10	3
32	180 X 400	190 X 430	6	10	3

NOTE: All Bearing Pads shall be rectangular, of 60 Durometer Hardness and reinforced with steel laminates, 2 mm thick.



ELEVATION  
0° SKEW

ELEVATION  
30° SKEW

DETAIL OF BEVELED ANCHOR PLATE  
WHEN GRADE EXCEEDS 1%

NOTES: Weight of bearing assembly (including anchor plate, anchor bolts, nuts and washers), diaphragm bolt assembly and steel angle bumpers is included in the structural steel quantities. All cost of material, labor, equipment and incidentals necessary to install diaphragm bolt, bearing assembly and steel angle bumpers will be paid for at unit price bid for structural steel.

All cost of Elastomeric Bearing Pads will be included in the price bid for other items of work.

40 mm Anchor Plates for P.C. Beam bearing assembly shall be match-marked, shipped loose and field welded to the encased sole plate in order that minor horizontal adjustments of the bearing pad location can be made if necessary. Metal used in field weld will not be measured for payment.

APPROVED BY BRIDGE ENGINEER \_\_\_\_\_ DATE \_\_\_\_\_

OKLAHOMA DEPT. OF TRANSPORTATION  
COUNTY BRIDGE STANDARD ( METRIC )

BEARING DETAILS FOR P.C. BEAMS

1999 SPECIFICATIONS

PCB10-1 01M  
ALL DIMENSIONS ON THIS SHEET IN MILLIMETERS UNLESS OTHERWISE NOTED. CB-39M