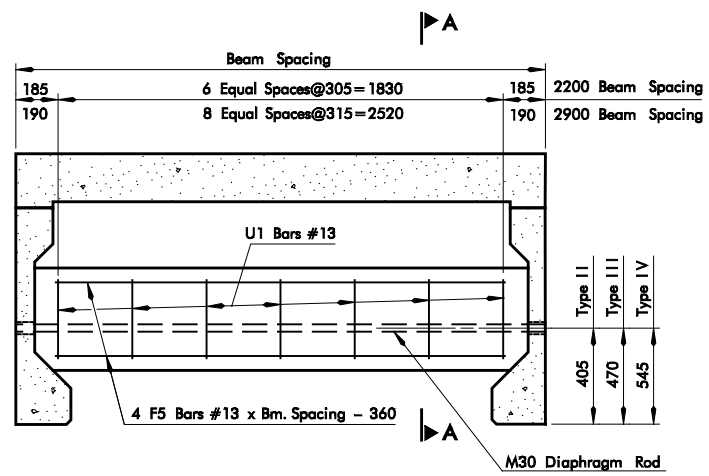
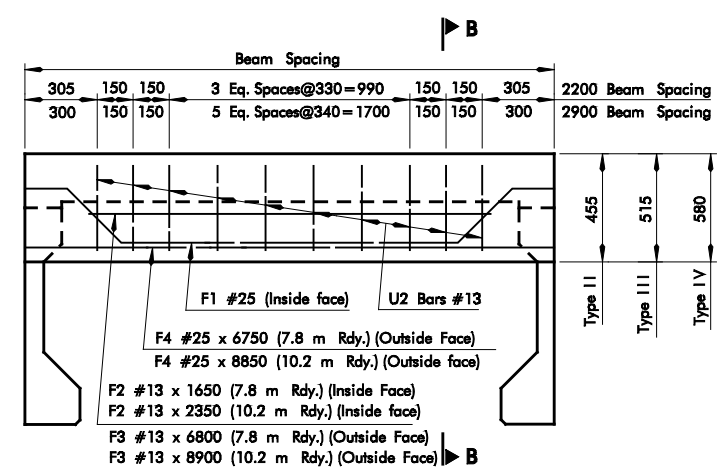


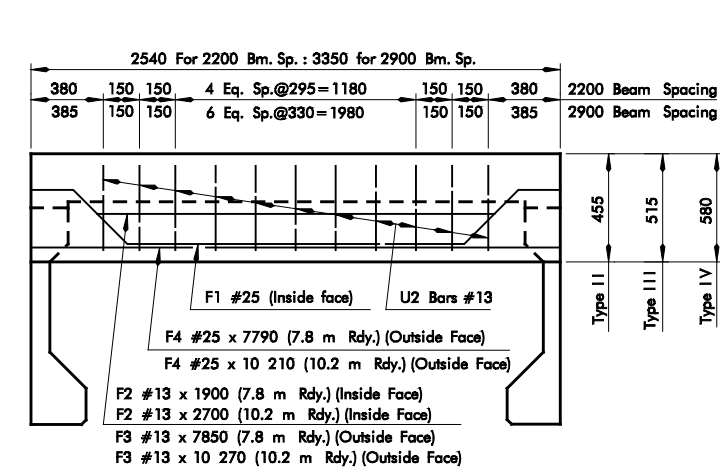
REV. NO.	DESCRIPTION	REVISIONS	DATE



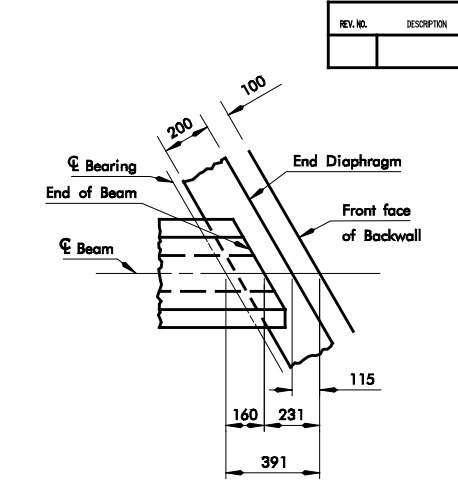
INTERMEDIATE DIAPHRAGM



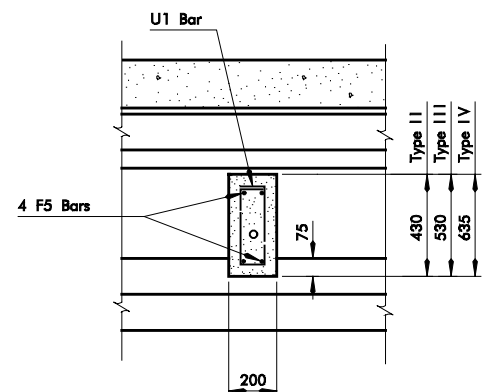
END DIAPHRAGM - 0° SKEW



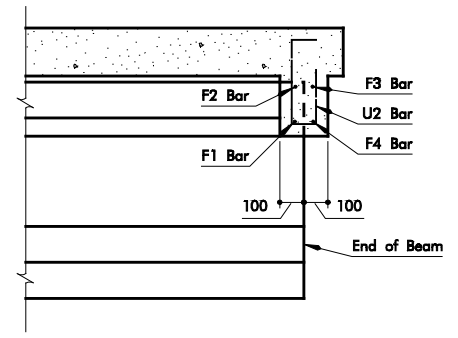
END DIAPHRAGM - 30° SKEW



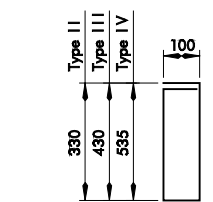
DETAIL AT ABUTMENT SKEWED 30°



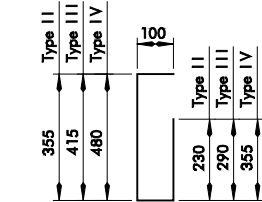
SECTION A-A



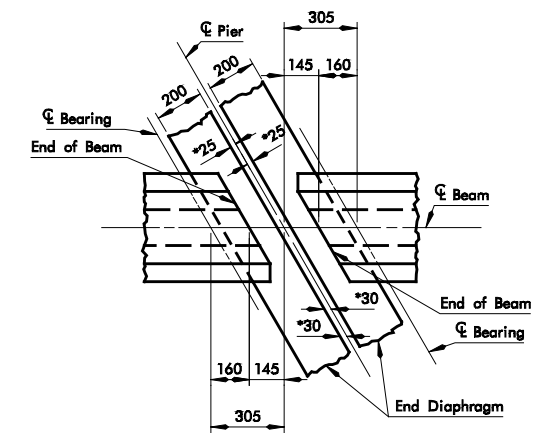
SECTION B-B



U1 BARS #13 x 960 (TYPE II)
U1 BARS #13 x 1160 (TYPE III)
U1 BARS #13 x 1370 (TYPE IV)



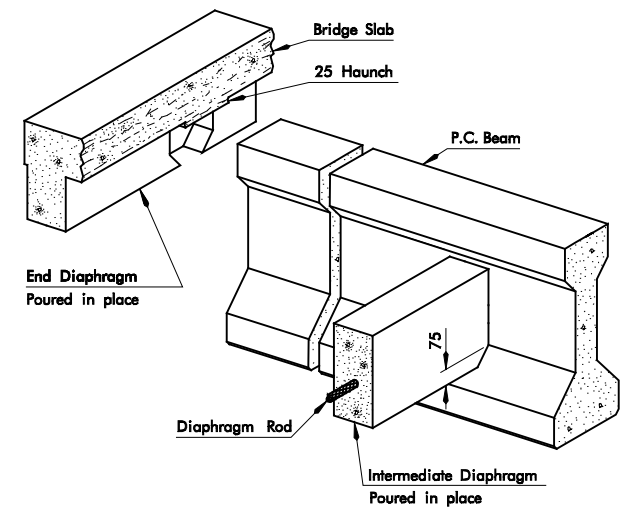
U2 BARS #13 x 785 (TYPE II)
U2 BARS #13 x 905 (TYPE III)
U2 BARS #13 x 1035 (TYPE IV)



DETAIL AT PIER SKEWED 30°

* Based on a temperature of 15°C

NOTE: 30° Rt. Fwd. Skew shown.
30° Lt. Fwd. Skew by opposite hand.



PICTORIAL VIEW-DIAPHRAGM CONNECTION
(Interior Beam shown)

Type II	180	255	1380	255	180	2200 Beam Spacing
Type III	230	315	1160	315	230	
Type IV	280	380	930	380	280	
Type II	180	255	2080	255	180	2900 Beam Spacing
Type III	230	315	1860	315	230	
Type IV	280	380	1630	380	280	

Type II	360	255
Type III	445	
Type IV	540	
Type II	360	
Type III	445	255
Type IV	540	
Type II	360	
Type III	445	255
Type IV	540	
Type II	360	

F1 BARS #25 x 2460(TYPE II)
F1 BARS #25 x 2510(TYPE III)
F1 BARS #25 x 2570(TYPE IV)
F1 BARS #25 x 3160(TYPE II)
F1 BARS #25 x 3210(TYPE III)
F1 BARS #25 x 3270(TYPE IV)

Type II	200	255	1670	255	200	2200 Beam Spacing
Type III	250	315	1440	315	250	
Type IV	310	380	1190	380	310	
Type II	200	255	2480	255	200	2900 Beam Spacing
Type III	250	315	2240	315	250	
Type IV	310	380	2000	380	310	

Type II	360	255
Type III	445	
Type IV	540	
Type II	360	
Type III	445	255
Type IV	540	
Type II	360	
Type III	445	255
Type IV	540	
Type II	360	

F1 BARS #25 x 2790(TYPE II)
F1 BARS #25 x 2830(TYPE III)
F1 BARS #25 x 2890(TYPE IV)
F1 BARS #25 x 3600(TYPE II)
F1 BARS #25 x 3630(TYPE III)
F1 BARS #25 x 3700(TYPE IV)

APPROVED BY BRIDGE ENGINEER _____ DATE _____

OKLAHOMA DEPT. OF TRANSPORTATION
COUNTY BRIDGE STANDARD (METRIC)

MISCELLANEOUS DETAILS
FOR P.C. BEAMS

1999 SPECIFICATIONS

PCB9-1 OOM
ALL DIMENSIONS ON THIS SHEET IN MILLIMETERS UNLESS OTHERWISE NOTED. CB-38M