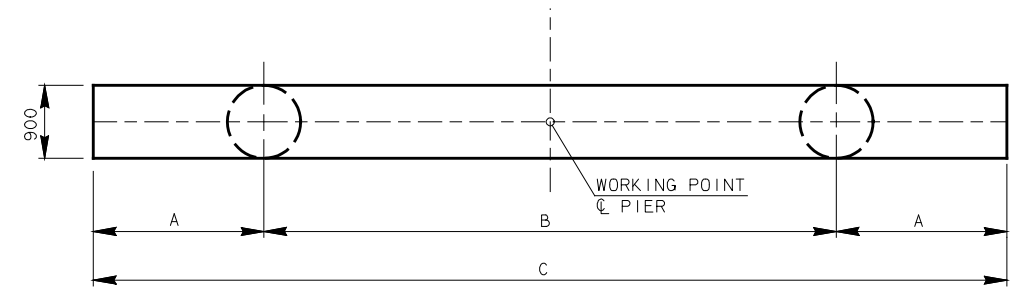
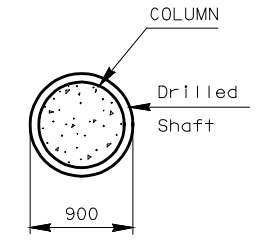


| REV. NO. | DESCRIPTION | REVISIONS | DATE |
|----------|-------------|-----------|------|
| | | | |

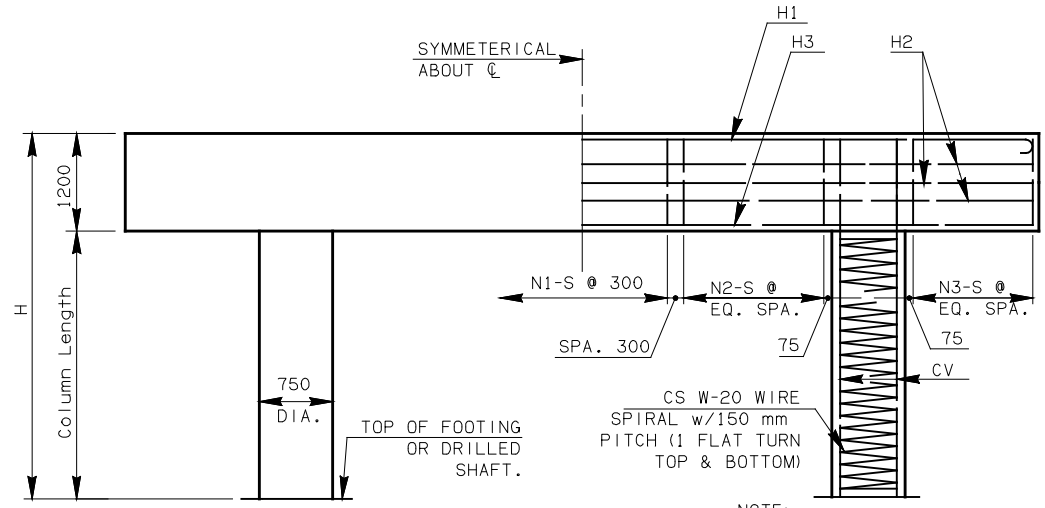


PLAN

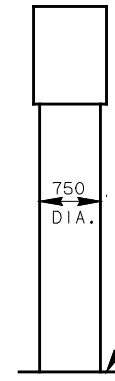
| CAP TYPE | DIMENSIONS (mm) | | | STIRRUP DATA | | |
|----------|-----------------|------|--------|--------------|----|----|
| | A | B | C | N1 | N2 | N3 |
| CAP 1 | 1800 | 5200 | 8800 | 5 | 9 | 5 |
| CAP 2 | 2400 | 5300 | 10 100 | 5 | 9 | 7 |
| CAP 3 | 2400 | 5900 | 10 700 | 5 | 16 | 12 |
| CAP 4 | 2700 | 6800 | 12 200 | 8 | 16 | 12 |



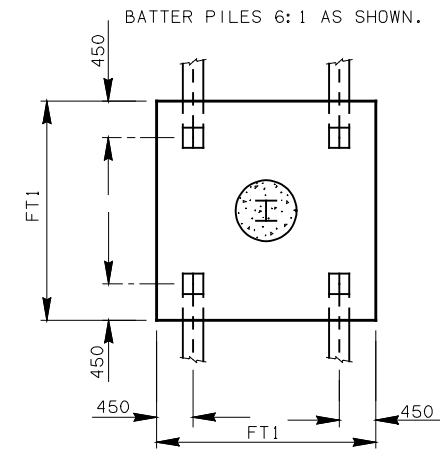
PLAN



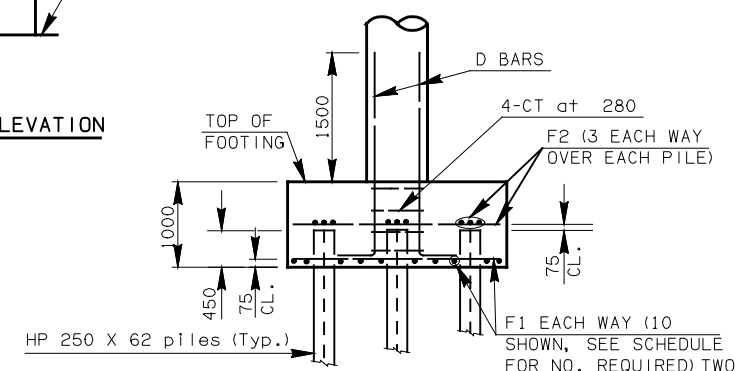
FRONT ELEVATION



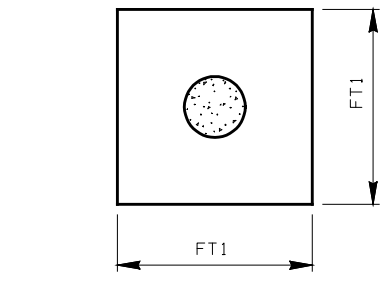
SIDE ELEVATION



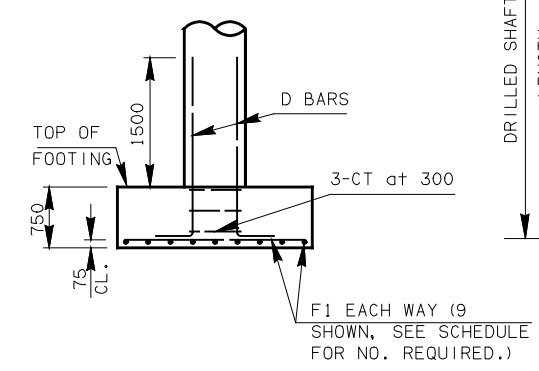
PLAN



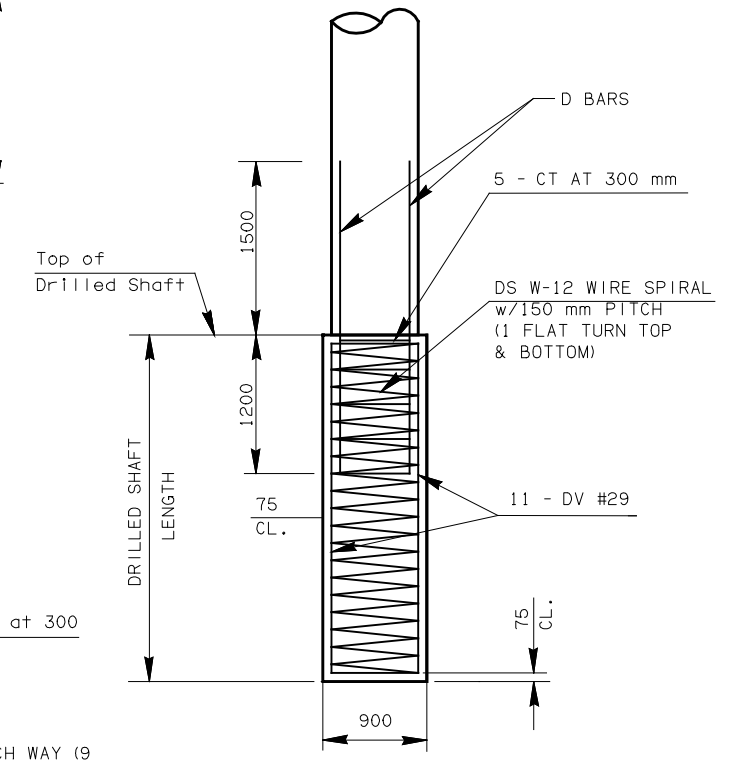
PILE FOOTING ELEVATION



PLAN

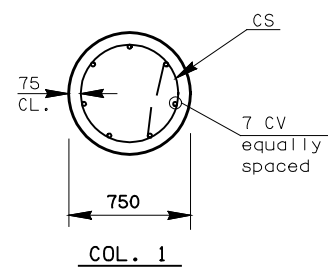


SPREAD FOOTING ELEVATION

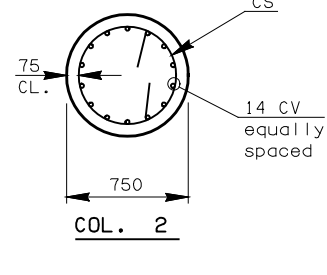


DRILLED SHAFT ELEVATION

NOTE: ALL COST OF REINFORCING STEEL IN DRILLED SHAFTS (CT, D, DS & DV BARS) SHALL BE INCLUDED IN THE PRICE PER METER OF DRILLED SHAFT.

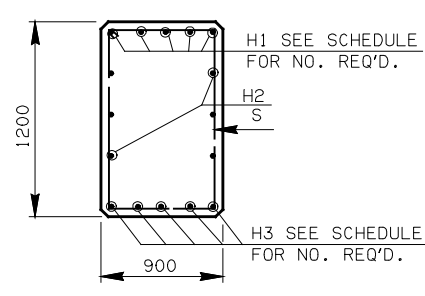


COL. 1

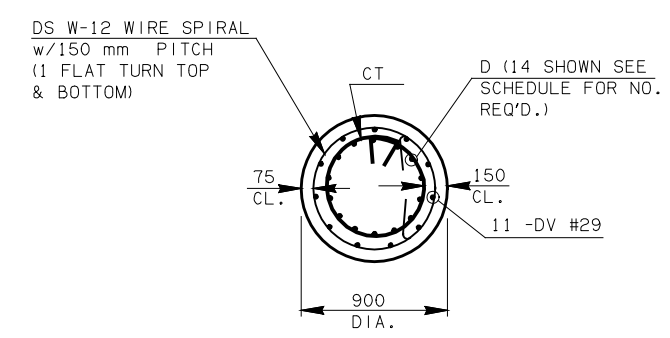


COL. 2

SECTION THRU PIER COLUMN



SECTION THRU PIER CAP



SECTION THRU DRILLED SHAFT AT DOWELS

NOTE: WIRE SPIRALS TO HAVE 800 mm MIN. LAP ANCHOR SPLICES AROUND VERTICAL REINFORCING. SEE STD. PIER3 FOR BAR BEND DETAIL AT ENDS OF SPIRAL.

FOOTING DETAILS

DESIGN DATA

CLASS A CONCRETE f'c 21 MPa
 REINFORCING STEEL (GRADE 420)..... fy 420 MPa
 LOADING MS 18+1 kPa F.W.S.

| | |
|------------------------------------------------------------------------------------------------------------------------------|-------------|
| APPROVED BY BRIDGE ENGINEER | DATE |
| OKLAHOMA DEPT. OF TRANSPORTATION COUNTY BRIDGE STANDARD (METRIC) PIER DETAILS FOR PIERS UNDER DOUBLE TEES | |
| 1999 SPECIFICATIONS | PIER2-1 OOM |
| ALL DIMENSIONS ON THIS SHEET IN MILLIMETERS UNLESS OTHERWISE NOTED. | |