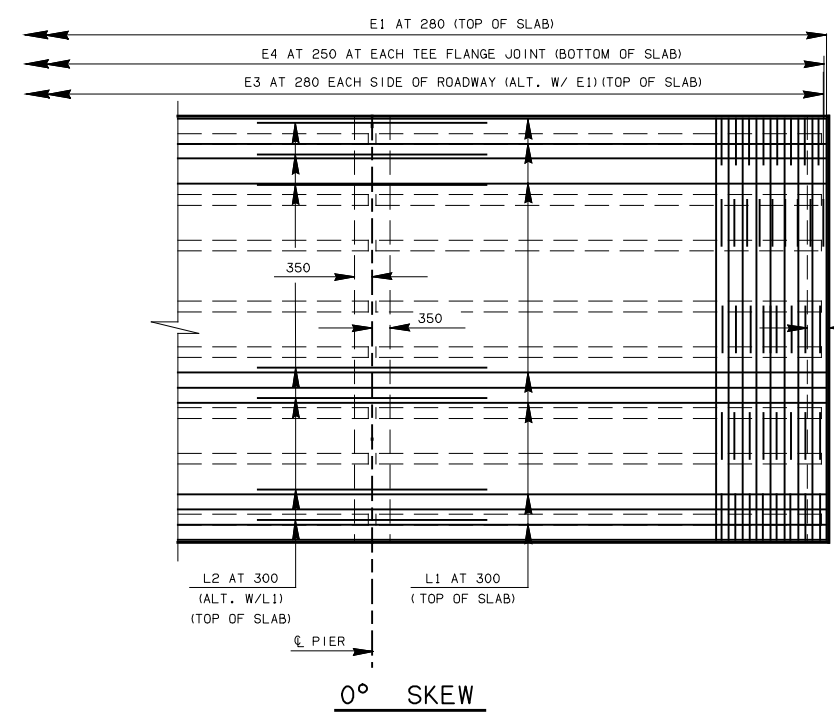


REV. NO.	DESCRIPTION	REVISIONS	DATE

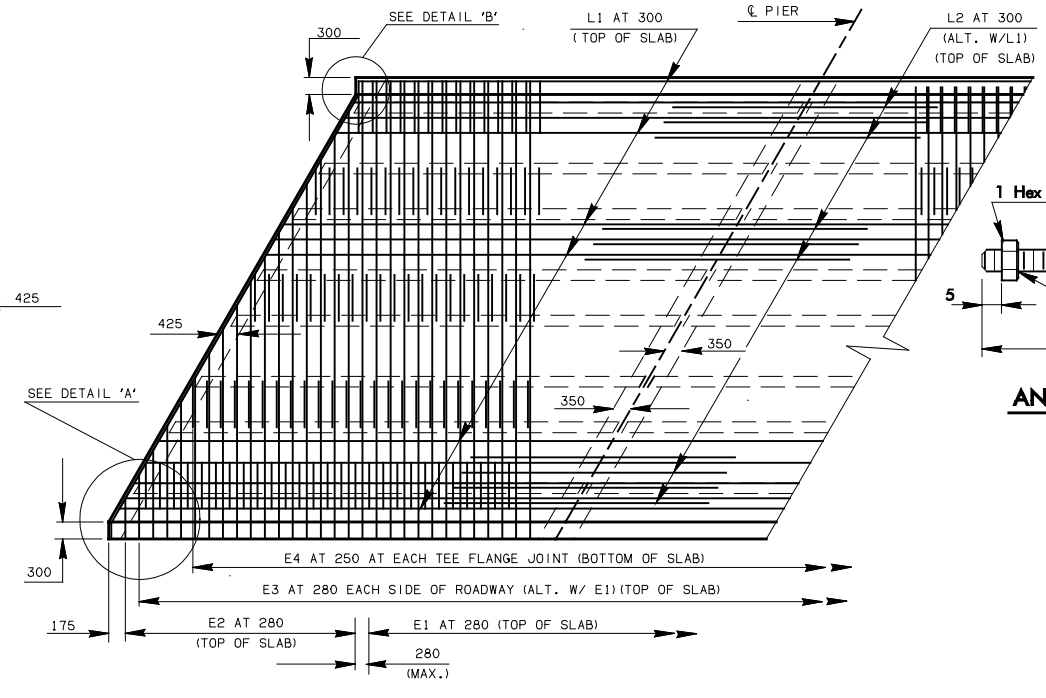
**ANCHOR ASSEMBLY NOTES**

THE ANCHOR ASSEMBLY SHALL BE PLACED AFTER THE SUBSTRUCTURE IS POURED. AFTER THE ANCHOR ASSEMBLY IS FIELD PAINTED, STYROFOAM BLOCKS OF AN APPROVED MATERIAL SHALL BE PLACED AS SHOWN OVER EACH ANCHOR BOLT TO ALLOW THE ASSEMBLY TO EXPAND AS DESIGNED. THE PREFORMED EXPANSION JOINT FILLER 701.08(a) SHALL BE PLACED UNDER TEE STEMS AND DIAPHRAGMS.

ALL ITEMS IN THE ANCHOR ASSEMBLY, INCLUDING ANCHOR BOLTS, WILL NOT BE PAID FOR AS A SEPARATE ITEM AND SHALL BE INCLUDED IN THE DOUBLE TEE QUANTITY.

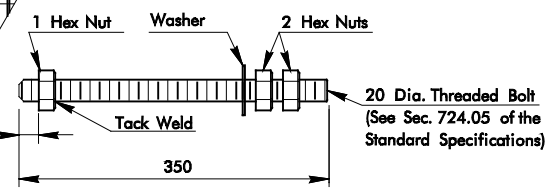


**0° SKEW**

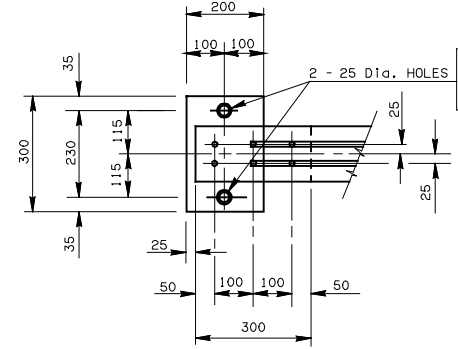


**30° SKEW**

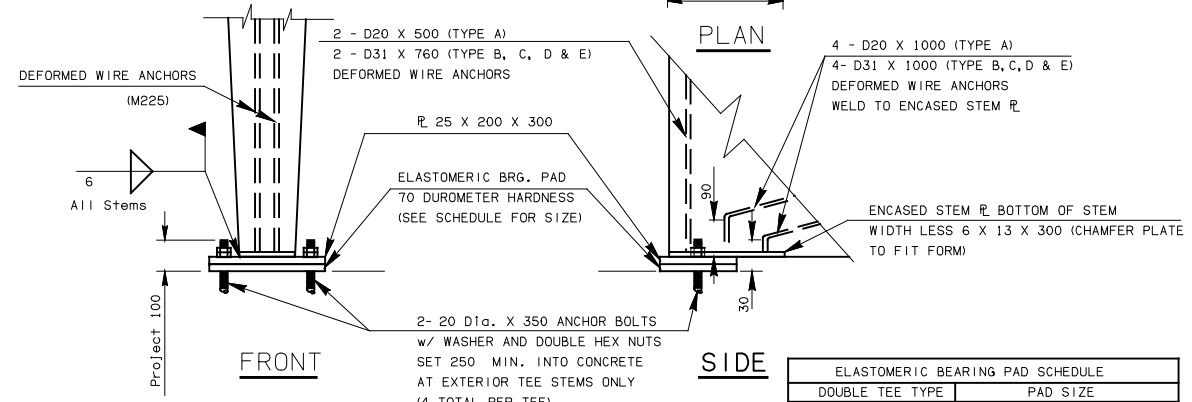
LEFT FORWARD SKEW SHOWN, RIGHT FORWARD SKEW OPPOSITE HAND



**ANCHOR BOLT DETAIL**



OMIT HOLES IN  $\bar{r}$  EXCEPT AT EXTERIOR TEE STEM WHERE ANCHOR BOLTS ARE REQUIRED

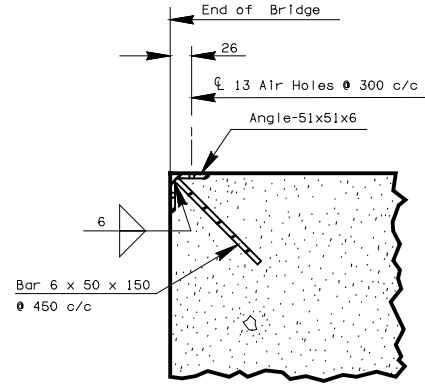


**FRONT**

**SIDE**

**DETAIL OF BEARING**

ELASTOMERIC BEARING PAD SCHEDULE	
DOUBLE TEE TYPE	PAD SIZE
A	175 X 20 X 300
B, C, D & E	200 X 20 X 300

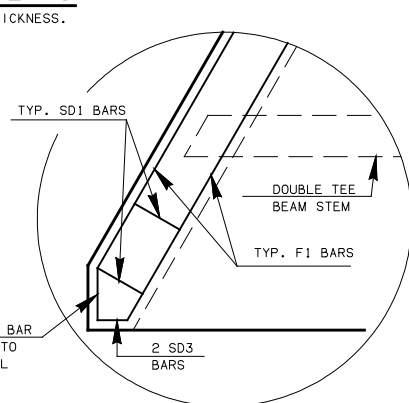


**STEEL ANGLE BUMPER DETAIL**

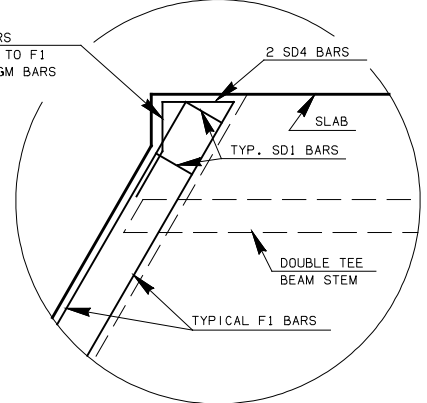
**SLAB REINFORCING PLANS**

SEE STD. TTB1 FOR SLAB WIDTH AND THICKNESS.

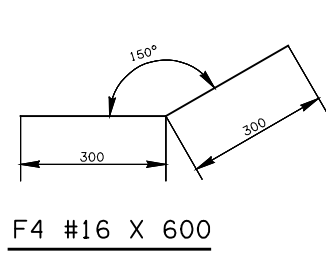
NOTE: ALL COST OF STEEL ANGLE BUMPER SHALL BE INCLUDED IN THE PRICE BID FOR PRESTRESSED CONCRETE DOUBLE TEE



**DETAIL 'A'**

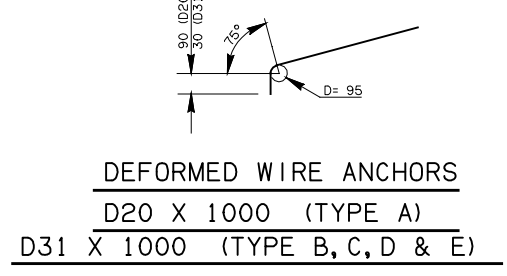


**DETAIL 'B'**

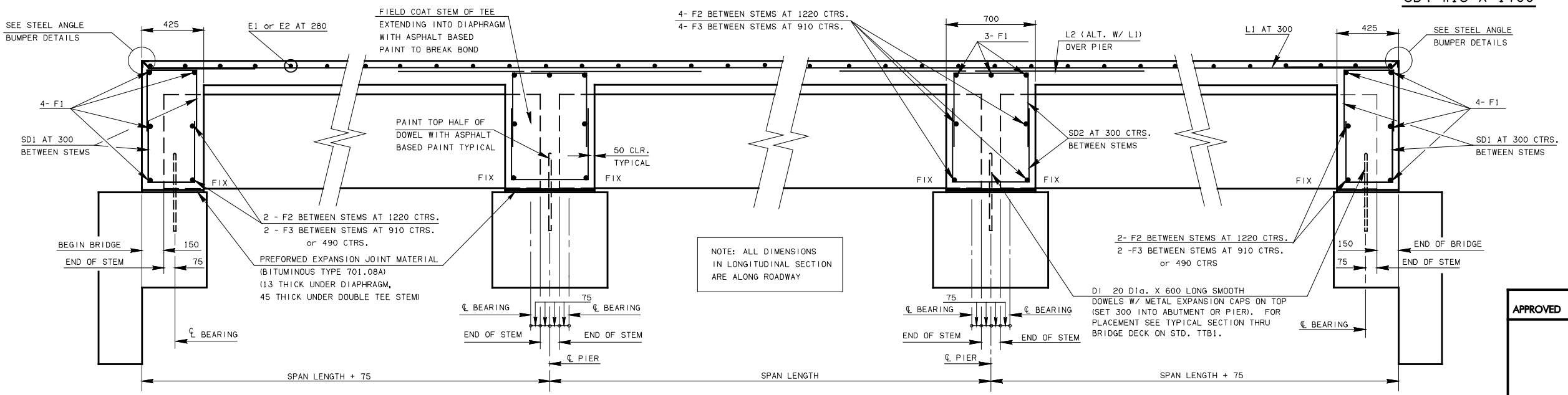


**F4 #16 X 600**

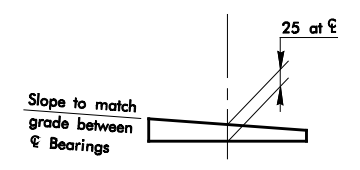
- SD1 #13 X 1525
- SD2 #13 X 1800
- SD3 #13 X 1450
- SD4 #13 X 1700



**DEFORMED WIRE ANCHORS**  
D20 X 1000 (TYPE A)  
D31 X 1000 (TYPE B, C, D & E)



**LONGITUDINAL SECTION**



**DETAIL OF BEVELED ANCHOR PLATE WHEN GRADE EXCEEDS 1%**

APPROVED BY BRIDGE ENGINEER DATE

**OKLAHOMA DEPT. OF TRANSPORTATION  
COUNTY BRIDGE STANDARD (METRIC)  
DOUBLE TEE BRIDGE SLAB DETAILS**

1999 SPECIFICATIONS

TTB2-1 OOM

ALL DIMENSIONS ON THIS SHEET IN MILLIMETERS UNLESS OTHERWISE NOTED. CB-13M