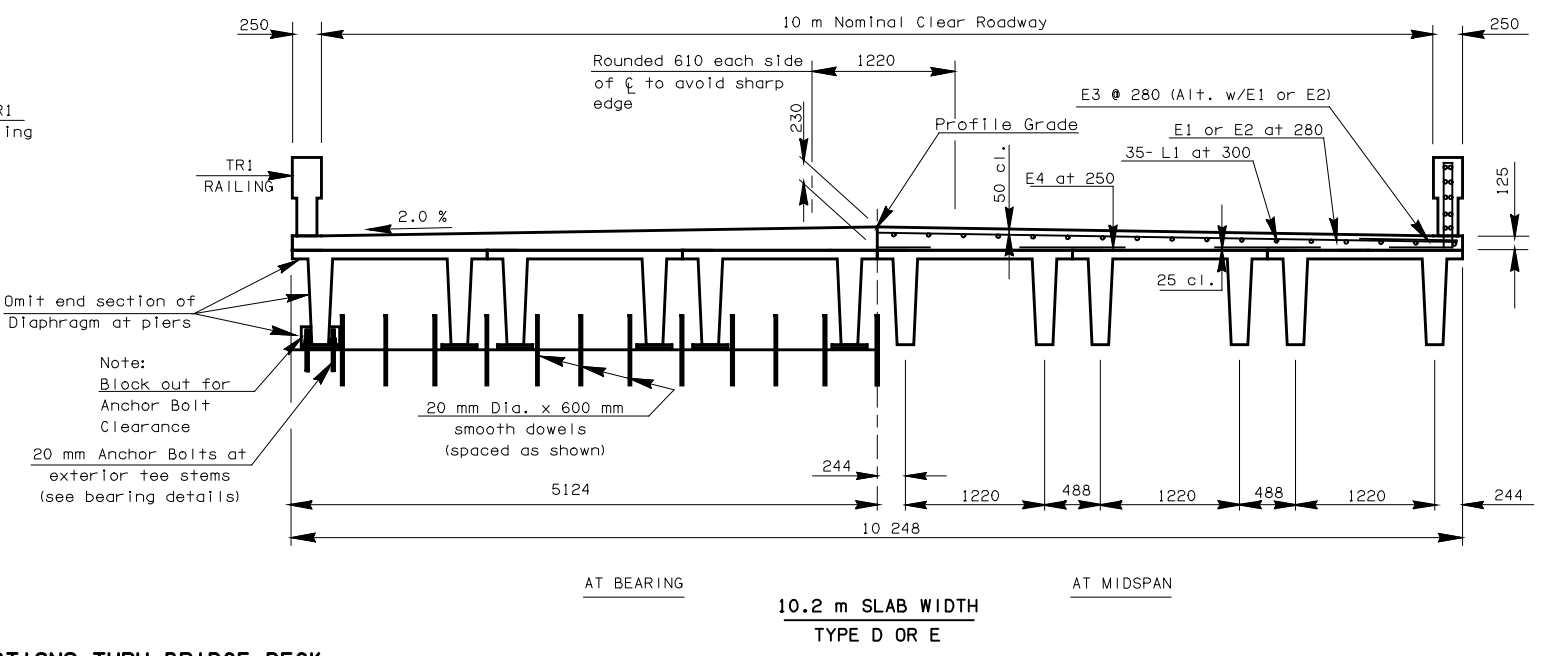
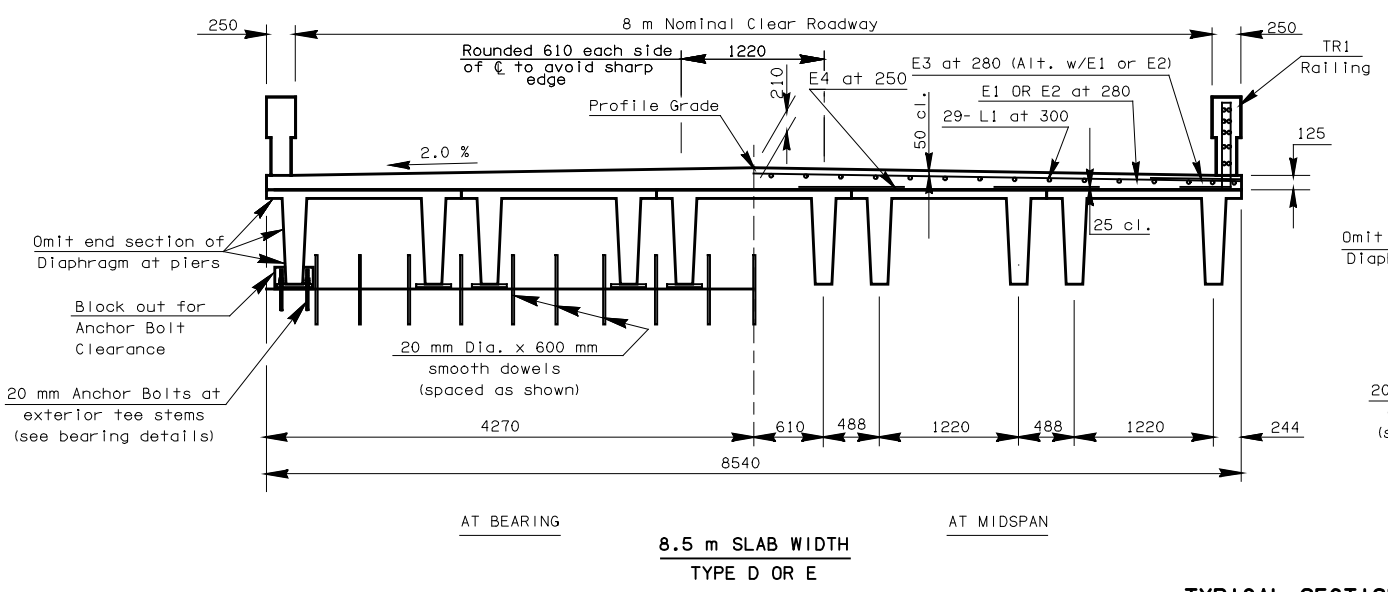
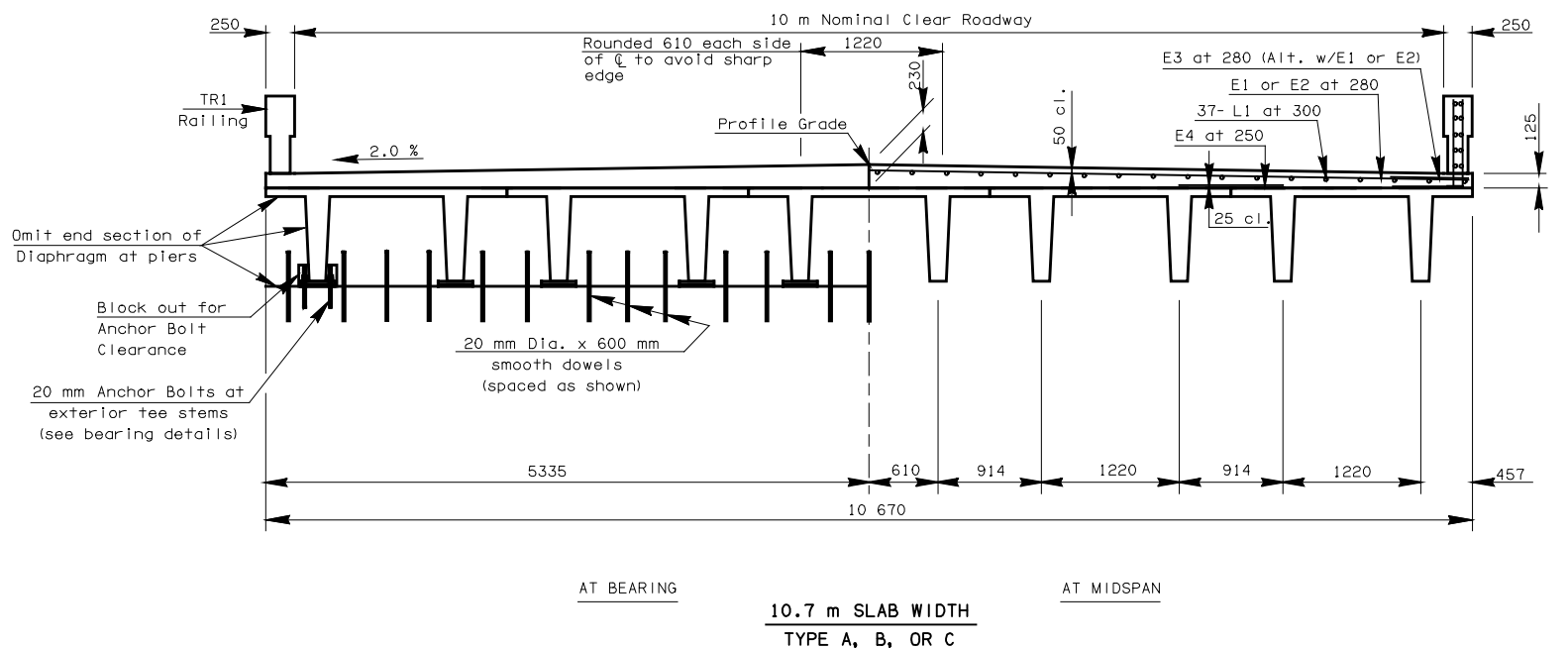
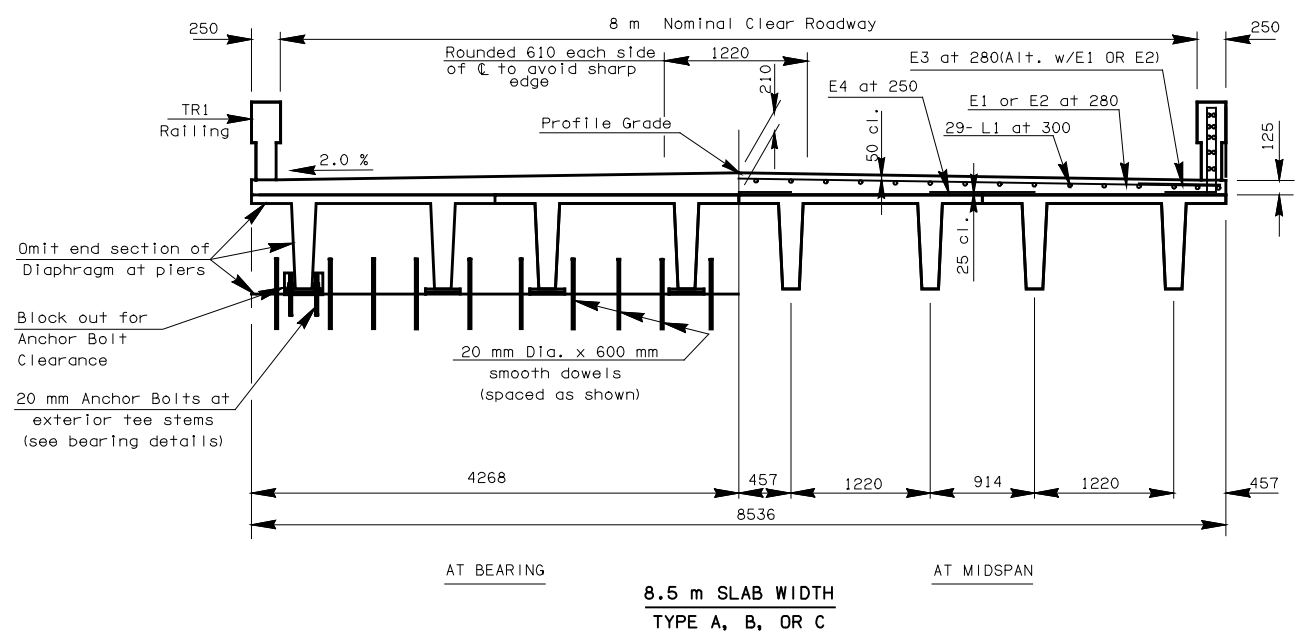


REV. NO.	DESCRIPTION	REVISIONS	DATE



TYPICAL SECTIONS THRU BRIDGE DECK

DESIGN DATA
 CLASS AA CONCRETE $f'_c = 28 \text{ MPa}$
 REINFORCING STEEL (GR. 420) $f_y = 420 \text{ MPa}$
 LOADING MS 18 + 1 kPa FUTURE WEARING SURFACE

NOTE:
 IF THESE BRIDGES ARE CONSTRUCTED IN AREAS WHERE IT IS ANTICIPATED THAT DEICING SALTS WILL BE USED, THE TOP SLAB REINFORCING SHOULD BE EPOXY COATED.

NOTE:
 FOR ADDITIONAL DETAILS OF CONCRETE TRAFFIC RAIL, SEE STD. TR1

APPROVED BY BRIDGE ENGINEER	DATE
OKLAHOMA DEPT. OF TRANSPORTATION COUNTY BRIDGE STANDARD (METRIC) DOUBLE TEE BRIDGE SECTION	
1999 SPECIFICATIONS	TTB1-1 00M
ALL DIMENSIONS ON THIS SHEET IN MILLIMETERS UNLESS OTHERWISE NOTED.	
CB-12M	