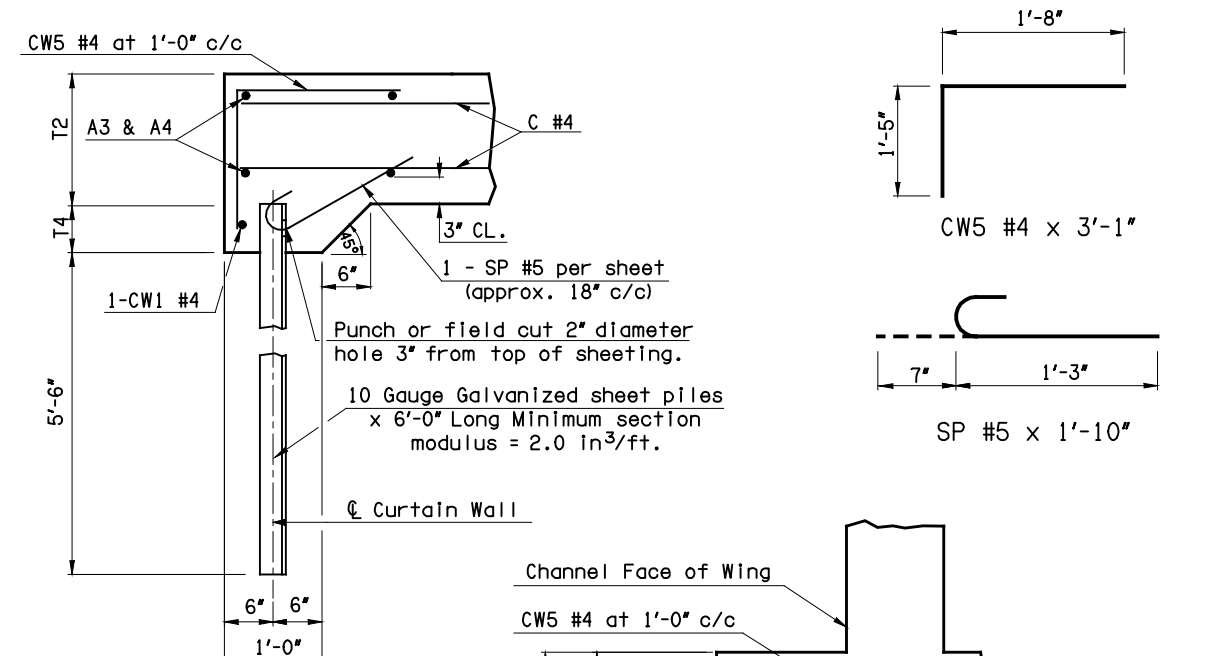


RCB2B-2 (2 barrel, 0° skew)									
DESIGN NUMBER	DIMENSIONS				REINFORCING		WING QUANTITIES *		
	T2	T4	E	F	CW5 No.	SP No.	CONCRETE (cubic yards)	REINF. STEEL (lbs.)	SHEET PILING (square yards)
1	1'-0 3/4"	9/4"	11'-0 1/4"	16'-11"	92	58	21.4	2190	58.6
2	1'-0 3/4"	9/4"	13'-3 1/4"	16'-11"	102	64	29.3	2790	64.6
3	1'-0 3/4"	9/4"	15'-7 1/4"	16'-11"	110	70	37.7	3420	70.8
4	1'-0 3/4"	9/4"	17'-10 1/4"	16'-11"	120	76	46.9	4790	76.8
5	1'-1"	9"	11'-0 1/4"	19'-11"	98	62	21.9	2260	62.6
6	1'-1"	9"	13'-3 1/4"	19'-11"	108	68	29.7	2860	68.6
7	1'-1"	9"	15'-7 1/4"	19'-11"	116	74	38.1	3480	74.8
8	1'-1"	9"	17'-10 1/4"	19'-11"	126	80	47.4	4850	80.8
9	1'-1"	9"	20'-2 1/4"	19'-11"	134	88	57.9	7020	87.1
10	1'-1 1/2"	8 1/2"	13'-3 1/4"	23'-11"	116	74	30.2	2930	73.9
11	1'-1 1/2"	8 1/2"	15'-7 1/4"	23'-11"	124	80	38.6	3550	80.2
12	1'-1 1/2"	8 1/2"	17'-10 1/4"	23'-11"	134	86	47.9	4930	86.2
13	1'-1 1/2"	8 1/2"	20'-2 1/4"	23'-11"	142	92	58.4	7090	92.4
14	1'-1 1/2"	8 1/2"	22'-5 1/4"	23'-11"	152	98	71.1	10220	98.4
15	1'-2"	8"	13'-3 1/4"	26'-11"	122	78	30.7	2990	78.0
16	1'-2"	8"	15'-7 1/4"	26'-11"	130	84	39.1	3620	84.2
17	1'-2"	8"	17'-10 1/4"	26'-11"	140	90	48.4	4980	90.2
18	1'-2"	8"	20'-2 1/4"	26'-11"	148	96	58.9	7170	96.4
19	1'-2"	8"	22'-5 1/4"	26'-11"	158	102	71.5	10290	102.4
20	1'-2"	8"	24'-9 1/4"	26'-11"	168	108	84.4	14140	108.6

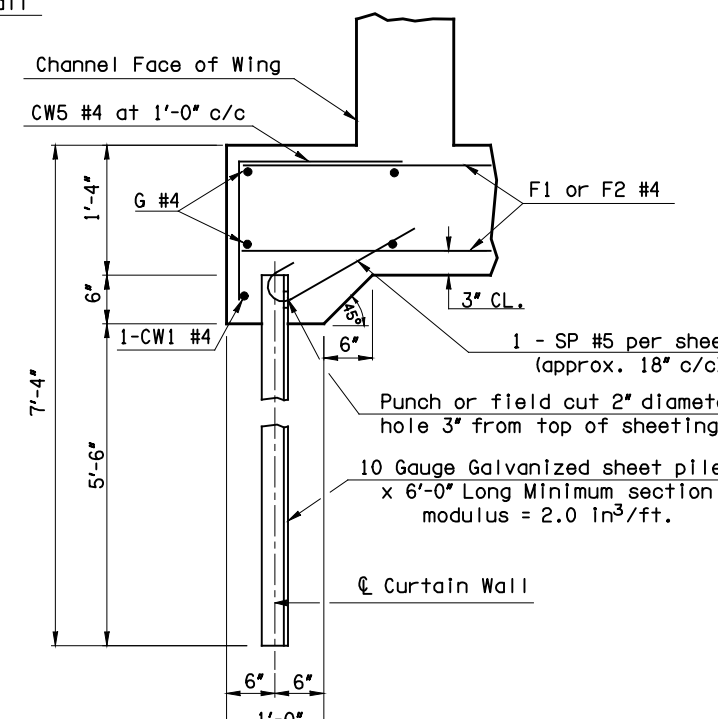
RCB3B-2 (3 barrel, 0° skew)									
DESIGN NUMBER	DIMENSIONS				REINFORCING		WING QUANTITIES *		
	T2	T4	E	F	CW5 No.	SP No.	CONCRETE (cubic yards)	REINF. STEEL (lbs.)	SHEET PILING (square yards)
1	1'-0 3/4"	9/4"	11'-0 1/4"	27'-5"	114	72	22.7	2380	72.7
2	1'-0 3/4"	9/4"	13'-3 1/4"	27'-5"	122	78	30.6	2990	78.7
3	1'-0 3/4"	9/4"	15'-7 1/4"	27'-5"	132	84	38.9	3610	84.9
4	1'-0 3/4"	9/4"	17'-10 1/4"	27'-5"	140	90	48.2	4970	90.9
5	1'-1"	9"	11'-0 1/4"	31'-11"	122	78	23.3	2470	78.7
6	1'-1"	9"	13'-3 1/4"	31'-11"	132	84	31.3	3070	84.7
7	1'-1"	9"	15'-7 1/4"	31'-11"	140	90	36.6	3690	90.9
8	1'-1"	9"	17'-10 1/4"	31'-11"	150	96	48.9	5060	96.9
9	1'-1"	9"	20'-2 1/4"	31'-11"	158	104	59.4	7230	104.1
10	1'-1 1/2"	8 1/2"	13'-3 1/4"	37'-11"	144	92	32.0	3180	92.7
11	1'-1 1/2"	8 1/2"	15'-7 1/4"	37'-11"	152	98	40.4	3820	98.9
12	1'-1 1/2"	8 1/2"	17'-10 1/4"	37'-11"	162	104	49.7	5170	104.9
13	1'-1 1/2"	8 1/2"	20'-2 1/4"	37'-11"	170	112	60.2	7350	111.1
14	1'-1 1/2"	8 1/2"	22'-5 1/4"	37'-11"	180	118	72.8	10470	117.1
15	1'-2"	8"	13'-3 1/4"	42'-5"	152	98	32.6	3260	98.7
16	1'-2"	8"	15'-7 1/4"	42'-5"	162	104	41.0	3890	104.9
17	1'-2"	8"	17'-10 1/4"	42'-5"	170	110	50.3	5260	110.9
18	1'-2"	8"	20'-2 1/4"	42'-5"	180	118	60.9	7450	117.1
19	1'-2"	8"	22'-5 1/4"	42'-5"	188	124	73.5	10570	123.1
20	1'-2"	8"	24'-9 1/4"	42'-5"	198	130	86.3	14410	129.3

RCB2B30RF-2 & RCB2B30LF-2 (2 barrel, 30° skew)										
DESIGN NUMBER	DIMENSIONS				REINFORCING		WING QUANTITIES *			
	T2	T4	E1	E2	F	CW5 No.	SP No.	CONCRETE (cubic yards)	REINF. STEEL (lbs.)	SHEET PILING (square yards)
1	1'-0 3/4"	9/4"	17'-1 1/4"	9'-11"	19'-1 1/8"	106	68	25.8	2940	68.3
2	1'-0 3/4"	9/4"	20'-4 3/4"	11'-10"	19'-1 1/8"	118	74	35.2	3640	75.1
3	1'-0 3/4"	9/4"	23'-8 3/4"	14'-2"	19'-1 1/8"	128	82	45.3	4420	82.7
4	1'-0 3/4"	9/4"	26'-11 3/4"	16'-5"	19'-1 1/8"	140	90	56.5	6260	90.0
5	1'-1"	9"	17'-1 1/4"	9'-11"	22'-6 3/4"	114	72	26.4	3050	72.9
6	1'-1"	9"	20'-4 3/4"	11'-10"	22'-6 3/4"	124	80	35.7	3770	79.8
7	1'-1"	9"	23'-8 3/4"	14'-2"	22'-6 3/4"	136	86	45.8	4550	87.3
8	1'-1"	9"	26'-11 3/4"	16'-5"	22'-6 3/4"	146	94	57.0	6400	94.7
9	1'-1"	9"	30'-2 3/4"	18'-5"	22'-6 3/4"	156	102	69.3	8650	101.7
10	1'-1 1/2"	8 1/2"	20'-4 3/4"	11'-10"	27'-2 1/8"	134	86	36.3	3930	85.9
11	1'-1 1/2"	8 1/2"	23'-8 3/4"	14'-2"	27'-2 1/8"	144	94	46.4	4740	93.5
12	1'-1 1/2"	8 1/2"	26'-11 3/4"	16'-5"	27'-2 1/8"	156	100	57.6	6550	100.8
13	1'-1 1/2"	8 1/2"	30'-2 3/4"	18'-5"	27'-2 1/8"	166	108	69.9	8810	107.8
14	1'-1 1/2"	8 1/2"	33'-6 3/4"	20'-9"	27'-2 1/8"	178	114	85.4	12720	115.4
15	1'-2"	8"	20'-4 3/4"	11'-10"	30'-7 3/4"	140	90	36.8	4060	90.5
16	1'-2"	8"	23'-8 3/4"	14'-2"	30'-7 3/4"	152	98	46.9	4850	98.1
17	1'-2"	8"	26'-11 3/4"	16'-5"	30'-7 3/4"	162	106	58.2	6700	105.4
18	1'-2"	8"	30'-2 3/4"	18'-5"	30'-7 3/4"	174	112	70.5	8970	112.4
19	1'-2"	8"	33'-6 3/4"	20'-9"	30'-7 3/4"	184	120	86.0	12880	120.0
20	1'-2"	8"	36'-9 3/4"	23'-0"	30'-7 3/4"	196	126	101.1	17680	127.3

RCB3B30LF-2 & RCB 3B30LF-2 (3 barrel, 30° skew)										
DESIGN NUMBER	DIMENSIONS				REINFORCING		WING QUANTITIES *			
	T2	T4	E1	E2	F	CW5 No.	SP No.	CONCRETE (cubic yards)	REINF. STEEL (lbs.)	SHEET PILING (square yards)
1	1'-0 3/4"	9/4"	17'-1 1/4"	9'-11"	31'-2 5/8"	132	84	27.3	2710	84.4
2	1'-0 3/4"	9/4"	20'-4 3/4"	11'-10"	31'-2 5/8"	142	90	36.6	3420	91.3
3	1'-0 3/4"	9/4"	23'-8 3/4"	14'-2"	31'-2 5/8"	152	98	46.8	4190	98.9
4	1'-0 3/4"	9/4"	26'-11 3/4"	16'-5"	31'-2 5/8"	164	106	57.9	6040	106.2
5	1'-1"	9"	17'-1 1/4"	9'-11"	36'-5"	142	90	28.0	2800	91.3
6	1'-1"	9"	20'-4 3/4"	11'-10"	36'-5"	152	98	37.4	3520	98.2
7	1'-1"	9"	23'-8 3/4"	14'-2"	36'-5"	164	106	47.5	4300	105.8
8	1'-1"	9"	26'-11 3/4"	16'-5"	36'-5"	174	112	58.7	6140	113.1
9	1'-1"	9"	30'-2 3/4"	18'-5"	36'-5"	184	120	71.0	8390	120.1
10	1'-1 1/2"	8 1/2"	20'-4 3/4"	11'-10"	43'-4 1/8"	166	108	38.2	3640	107.5
11	1'-1 1/2"	8 1/2"	23'-8 3/4"	14'-2"	43'-4 1/8"	178	114	48.3	4430	115.0
12	1'-1 1/2"	8 1/2"	26'-11 3/4"	16'-5"	43'-4 1/8"	188	122	59.6	6260	122.3
13	1'-1 1/2"	8 1/2"	30'-2 3/4"	18'-5"	43'-4 1/8"	198	128	71.8	8510	129.3
14	1'-1 1/2"	8 1/2"	33'-6 3/4"	20'-9"	43'-4 1/8"	210	136	87.3	12420	136.9
15	1'-2"	8"	20'-4 3/4"	11'-10"	48'-6 1/2"	176	114	38.9	3730	114.4
16	1'-2"	8"	23'-8 3/4"	14'-2"	48'-6 1/2"	188	122	49.1	4520	121.9
17	1'-2"	8"	26'-11 3/4"	16'-5"	48'-6 1/2"	198	128	60.3	6370	129.3
18	1'-2"	8"	30'-2 3/4"	18'-5"	48'-6 1/2"	210	136	72.7	8640	136.3
19	1'-2"	8"	33'-6 3/4"	20'-9"	48'-6 1/2"	220	144	88.2	12550	143.8
20	1'-2"	8"	36'-9 3/4"	23'-0"	48'-6 1/2"	232	150	103.1	17350	151.2

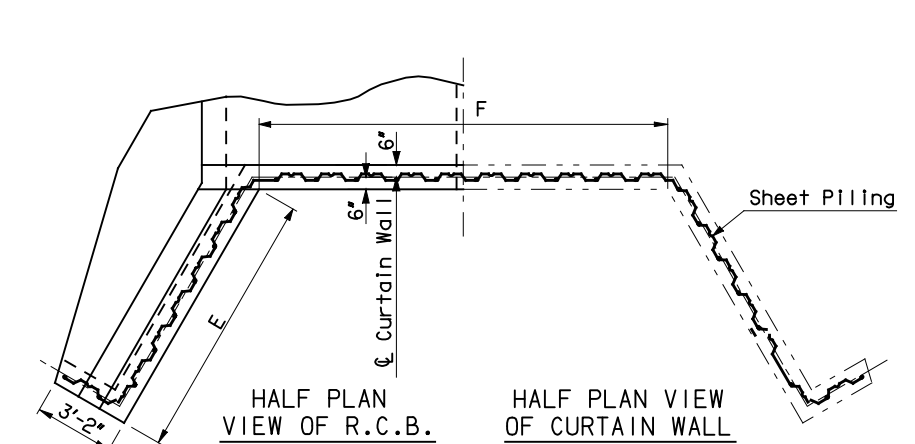


DETAIL OF ALTERNATE CURTAIN WALL UNDER BARREL

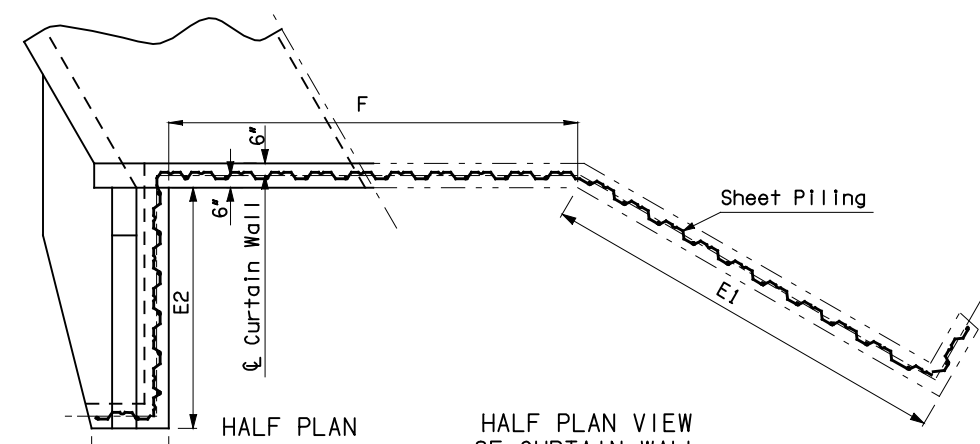


DETAIL OF ALTERNATE CURTAIN WALL UNDER WING

\* When alternate sheet piling curtain wall is used, these quantities supersede those shown on RCB standard.

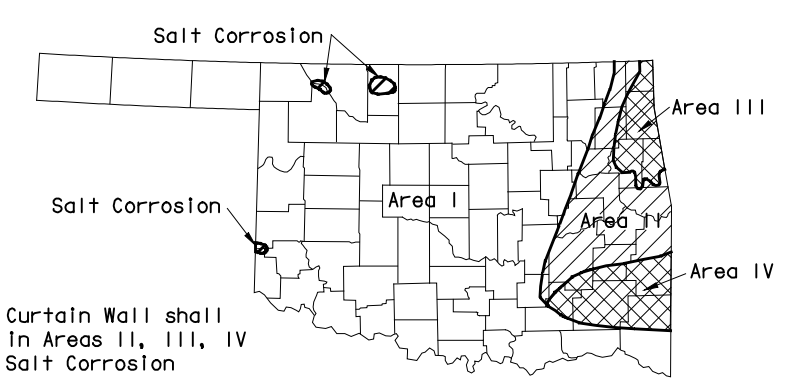


0° SKEW



30° SKEW

NOTE: Alternate Curtain Wall shall not be used in Areas II, III, IV or areas of Salt Corrosion



CORROSION STRESS MAP

APPROVED BY BRIDGE ENGINEER: \_\_\_\_\_ DATE: \_\_\_\_\_

OKLAHOMA DEPARTMENT OF TRANSPORTATION  
COUNTY BRIDGE STANDARD ( ENGLISH )  
ALTERNATE CURTAIN WALL  
FOR R.C.B.

1999 SPECIFICATIONS ACW-2 OOE CB-42E