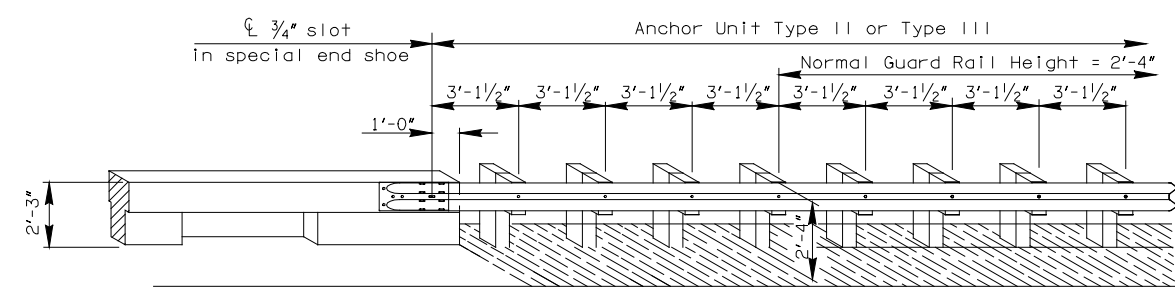
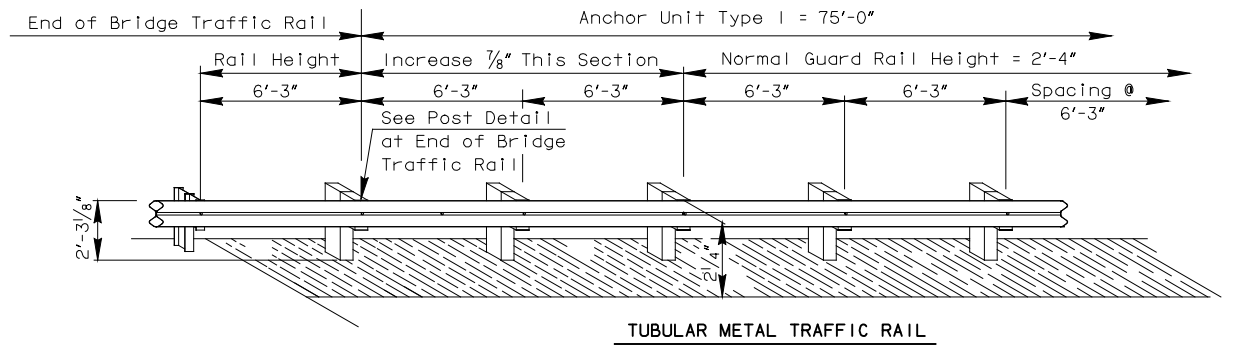
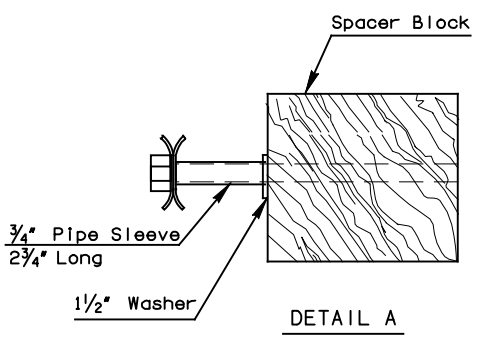
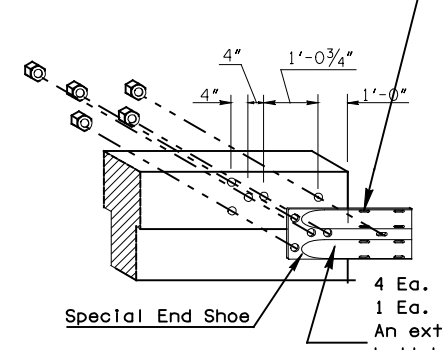


**BRIDGE END GUARD RAIL ANCHOR UNIT - TYPE I  
USE ON BRIDGE WITH TUBULAR METAL TRAFFIC RAIL**



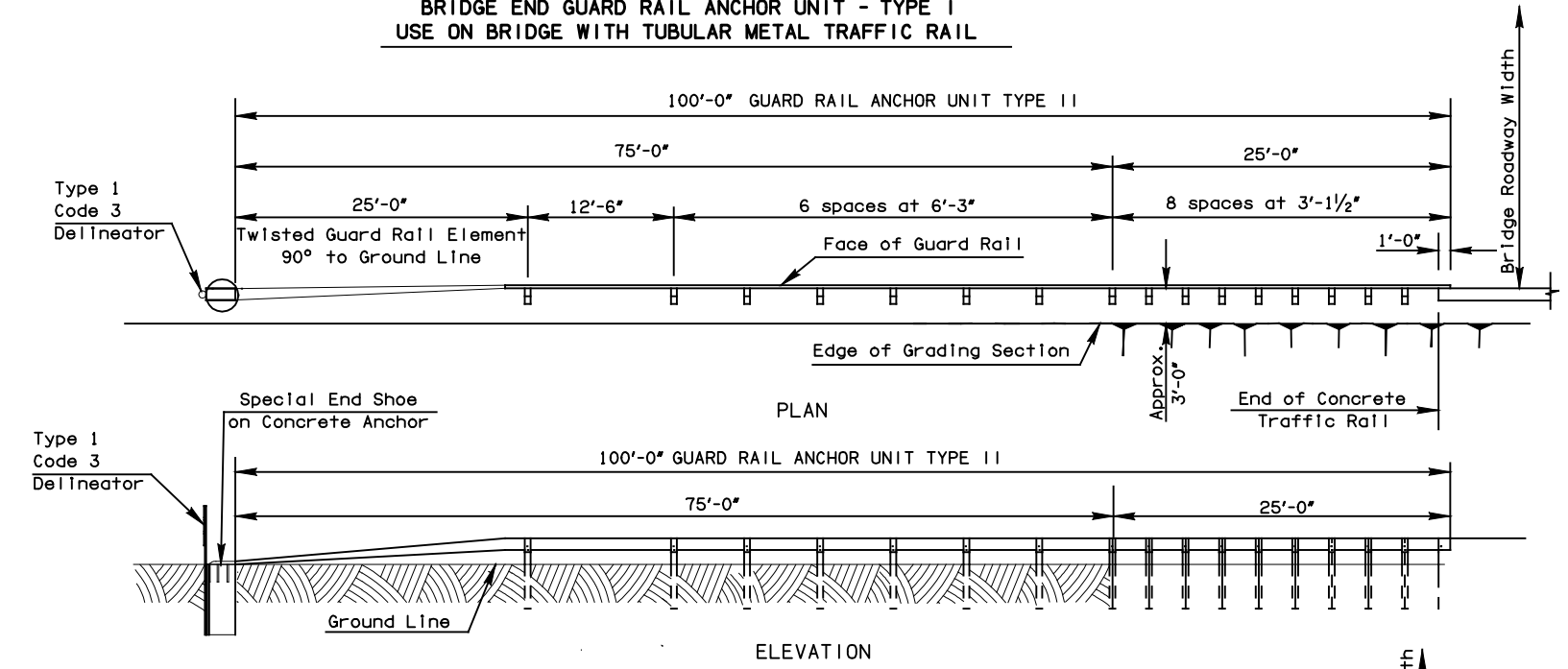
**PICTORIAL VIEW OF ANCHOR UNITS AT END OF BRIDGE**

8 Ea. Required- Bolt No.1 & Assembly with steel washer. See Table of Bolts, Nuts, & Washers

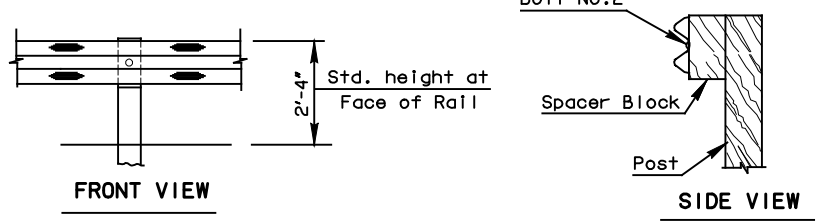


4 Ea. - Bolt No. 7 and assembly;  
1 Ea. - Bolt No. 6 and assembly;  
An extra washer shall be used under the bolt head. Bolts shall be of sufficient length to extend through the full thickness of the nut at least 1/2" beyond. They shall be tightened by the Turn - of - Nut Method with a minimum of 1 / 12 turn and maximum of 1 / 4 turn over snug tight condition.

NOTE: SEE STD BEGR2-2 FOR DETAILS OF SPECIAL END SHOE, POSTS & SPACER BLOCK AND TABLE OF BOLTS, NUTS & WASHERS.



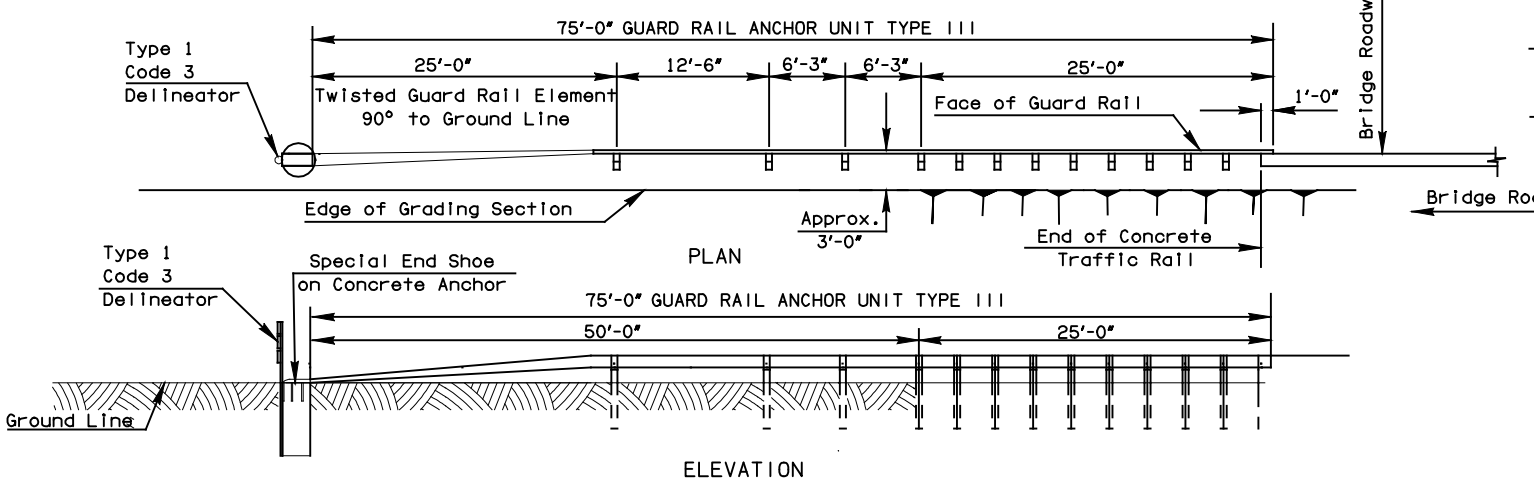
**BRIDGE END GUARD RAIL UNIT FOR TRAFFIC SPEEDS 35 mph AND OVER  
USE - ANCHOR UNIT - TYPE II FOR BRIDGES WITH CONCRETE TRAFFIC RAIL.**



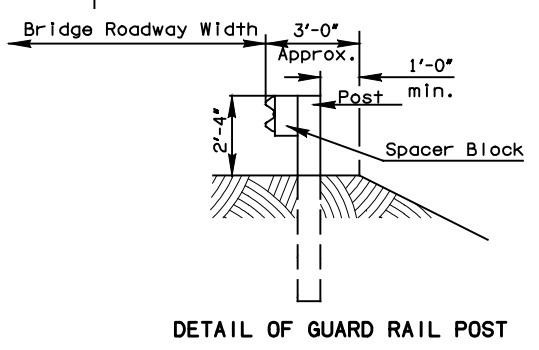
See Traffic Std. DU-1 For Standard Delineator Type 1, Code 3

| BASIS OF PAYMENT                    |      |
|-------------------------------------|------|
| ITEM                                | UNIT |
| * Guard Rail Anchor Unit (Type I)   | Ea.  |
| * Guard Rail Anchor Unit (Type II)  | Ea.  |
| * Guard Rail Anchor Unit (Type III) | Ea.  |

\* Includes post, guard rail, all hardware, concrete, Type 1, Code 3 Delineator (Amber Color) and other appurtenances necessary to construct Guard Rail Anchor Unit.



**BRIDGE END GUARD RAIL UNIT FOR TRAFFIC SPEEDS UNDER 35 mph  
USE - ANCHOR UNIT - TYPE III FOR BRIDGES WITH CONCRETE TRAFFIC RAIL.**



APPROVED BY BRIDGE ENGINEER: \_\_\_\_\_ DATE: \_\_\_\_\_

OKLAHOMA DEPT. OF TRANSPORTATION  
COUNTY BRIDGE STANDARD ( ENGLISH )

BRIDGE END GUARD RAIL