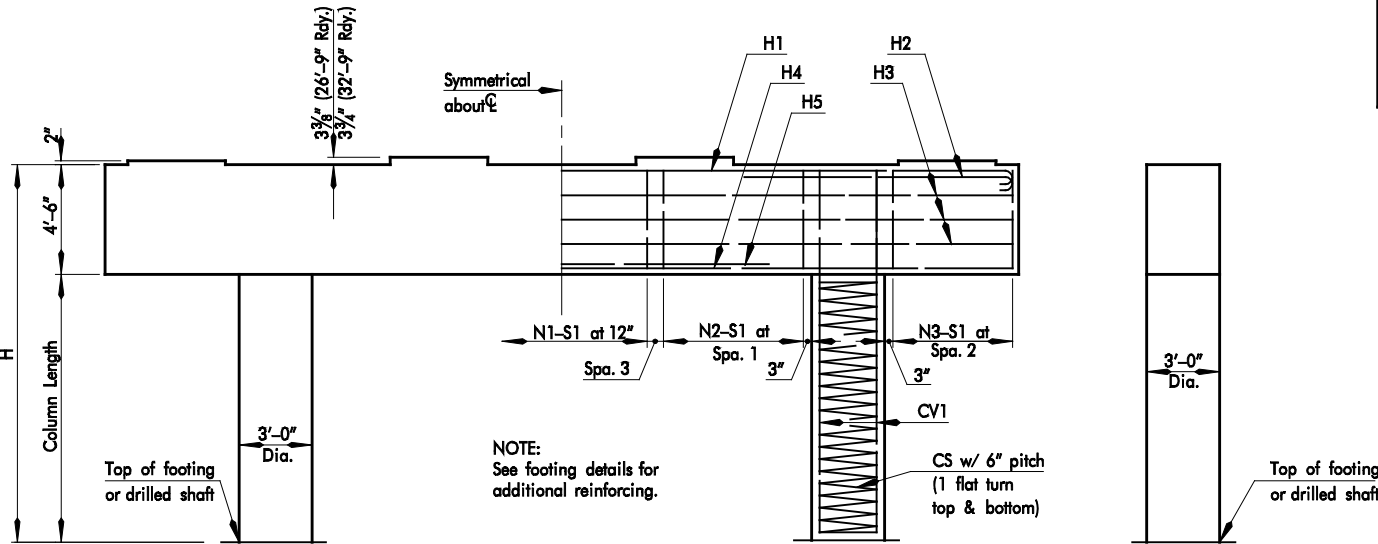


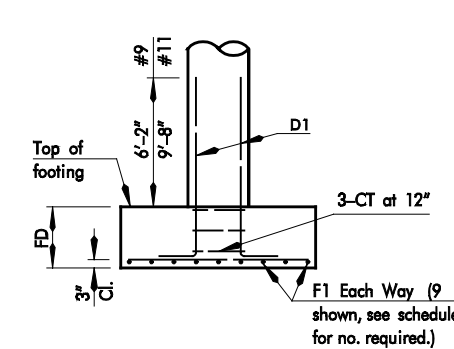
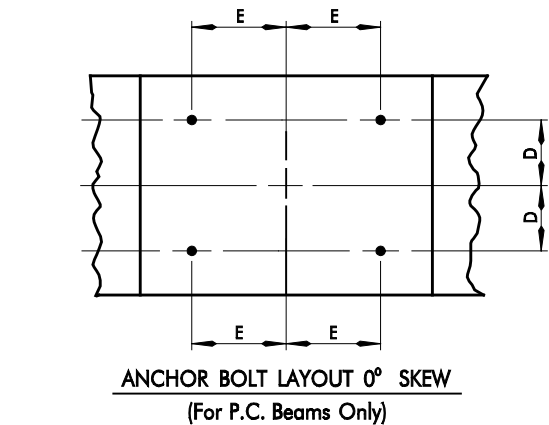
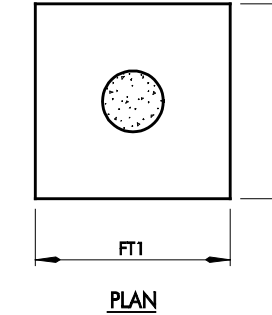
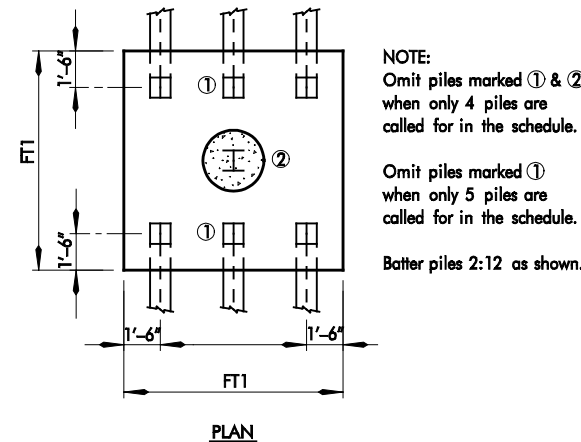
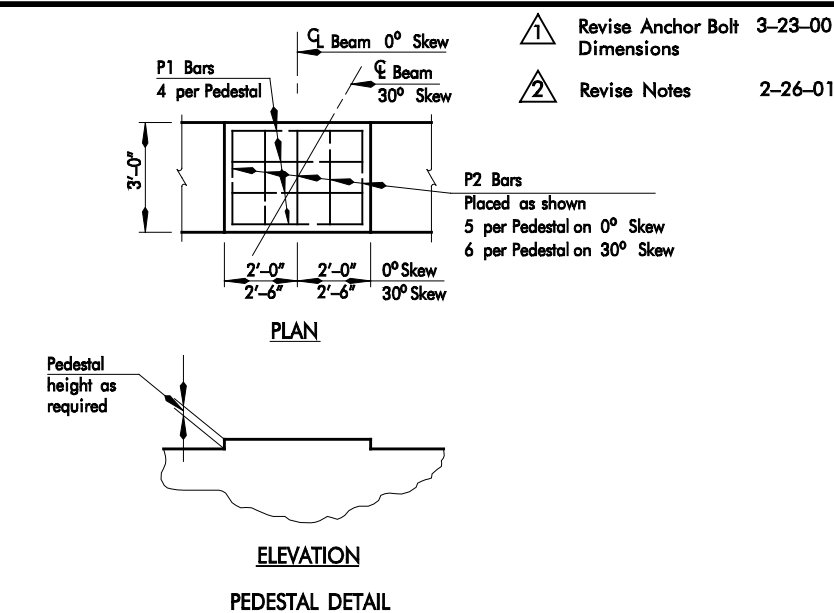
PLAN



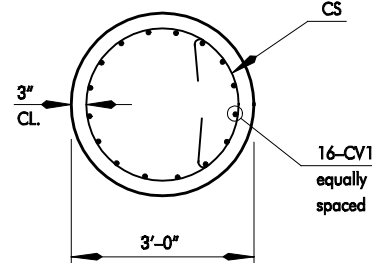
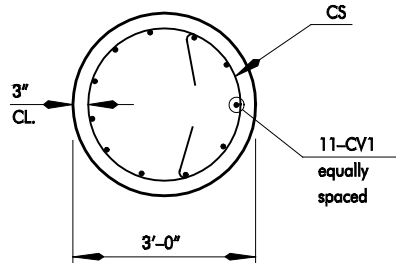
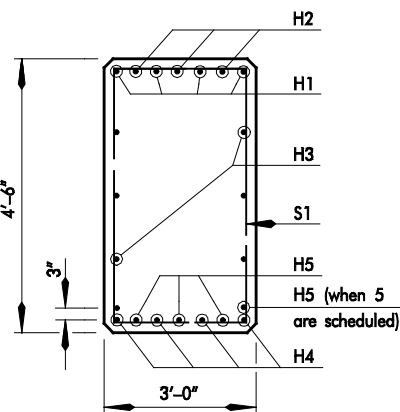
FRONT ELEVATION

SIDE ELEVATION

CAP TYPE	DIMENSIONS			STIRRUP DATA					
	A	B	C	N1	N2	N3	SPA. 1	SPA. 2	SPA. 3
CAP 1	5'-0"	16'-0"	26'-0"	12	1	4	0"	12"	9"
CAP 2	5'-0"	16'-0"	26'-0"	7	4	4	10"	12"	9"
CAP 3	5'-0"	16'-0"	26'-0"	7	7	7	5"	6"	9"
CAP 4	6'-0"	19'-0"	31'-0"	15	1	6	0"	10"	9"
CAP 5	6'-0"	19'-0"	31'-0"	8	5	6	10"	10"	11"
CAP 6	6'-0"	19'-0"	31'-0"	8	9	9	5"	6"	11"
CAP 7	6'-0"	20'-0"	32'-0"	16	1	5	0"	12"	9"
CAP 8	6'-0"	20'-0"	32'-0"	9	8	5	6"	12"	9"
CAP 9	6'-0"	20'-0"	32'-0"	9	12	9	4"	6"	7"
CAP 10	7'-0"	23'-6"	37'-6"	21	0	7	0"	10"	0"
CAP 11	7'-0"	23'-6"	37'-6"	10	9	7	7"	10"	10"
CAP 12	7'-0"	23'-6"	37'-6"	10	15	11	4"	6"	10"



SPREAD FOOTING ELEVATION



COL. 1 & 2

COL. 3

NOTE:
 All exposed edges to be chamfered 1".
 Concrete surface under superstructure beams shall be ground with A carborundum brick before placement of member to secure full bearing on concrete.
 All reinforcing shall have a 2" clearance unless noted otherwise.
 All Reinforcing steel shall be grade 60.
 Omit Reinforcing in 2" Pedestals

ANCHOR BOLT LAYOUT DIMENSION SCHEDULE				
	D	E	F	G
Type II Beam	10 1/2"	11 1/2"	7 3/16"	1'-7 7/16"
Type III Beam	10 1/2"	1'-1 1/2"	9 3/8"	1'-9 3/8"
Type IV Beam	10 3/4"	1'-3 1/2"	11 3/4"	2'-0"

APPROVED BY BRIDGE ENGINEER: DATE:

OKLAHOMA DEPARTMENT OF TRANSPORTATION
 COUNTY BRIDGE STANDARD (ENGLISH)
 PIER DETAILS FOR PIERS UNDER
 PRESTRESSED CONCRETE BEAMS