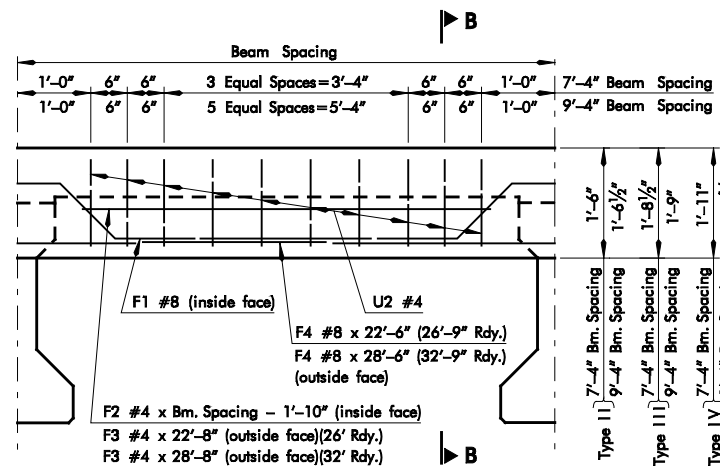
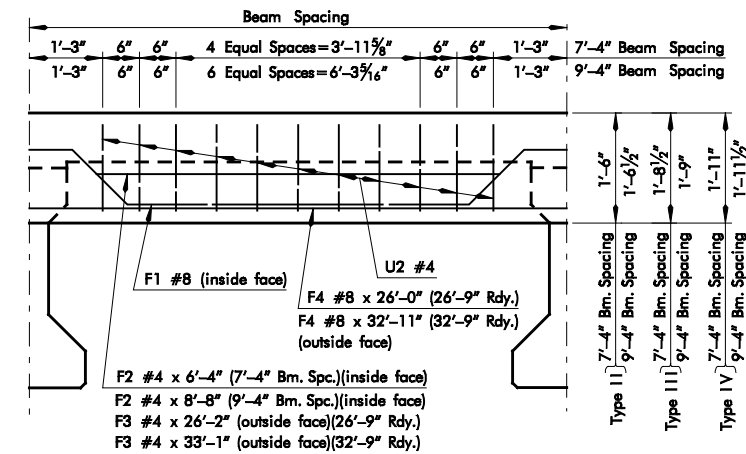


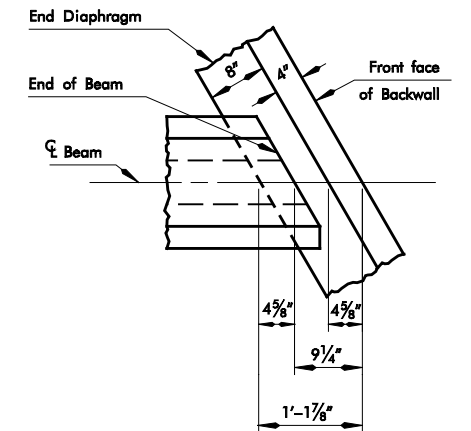
**INTERMEDIATE DIAPHRAGM**



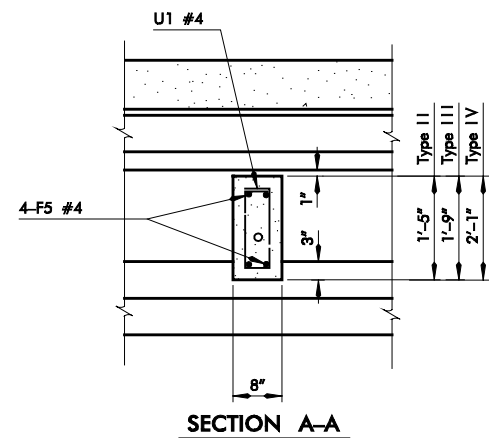
**END DIAPHRAGM - 0° SKEW**



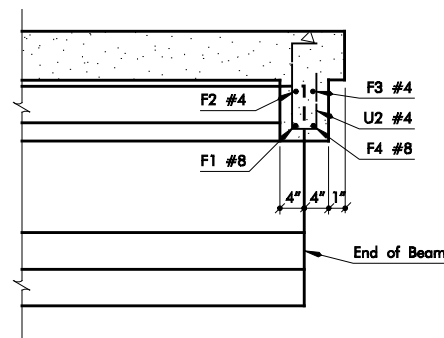
**END DIAPHRAGM - 30° SKEW**



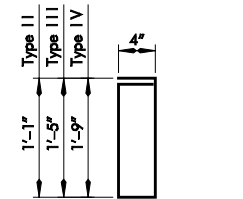
**DETAIL AT ABUTMENT SKEWED 30°**



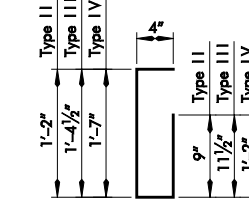
**SECTION A-A**



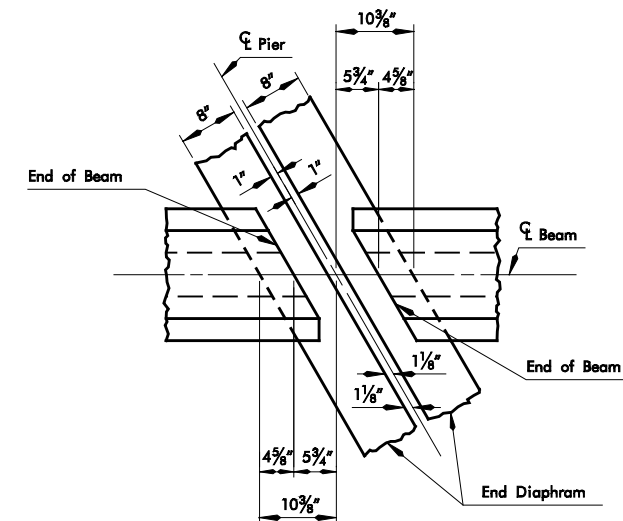
**SECTION B-B**



U1 BARS #4 x 3'-2" (TYPE II)  
 U1 BARS #4 x 3'-10" (TYPE III)  
 U1 BARS #4 x 4'-6" (TYPE IV)

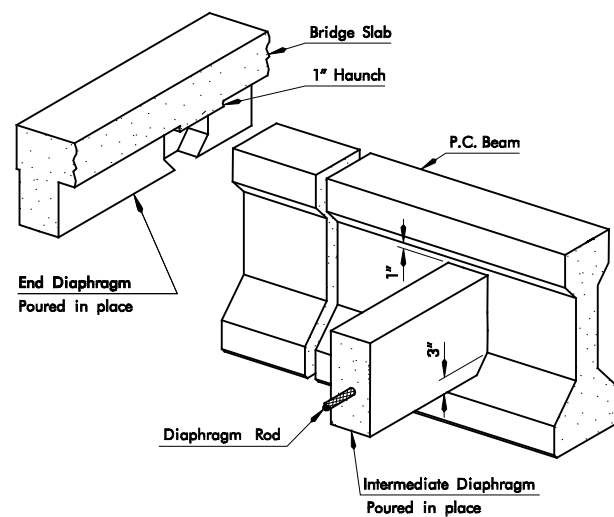


U2 BARS #4 x 2'-7" (TYPE II)  
 U2 BARS #4 x 3'-0" (TYPE III)  
 U2 BARS #4 x 3'-5" (TYPE IV)

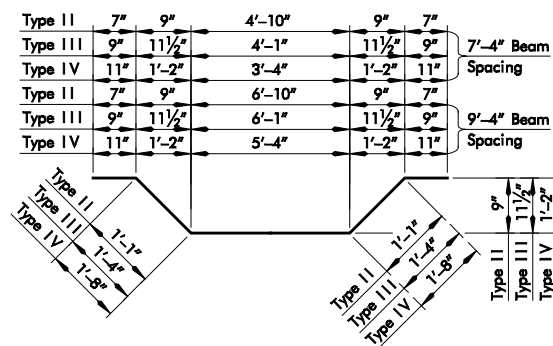


**DETAIL AT PIER SKEWED 30°**

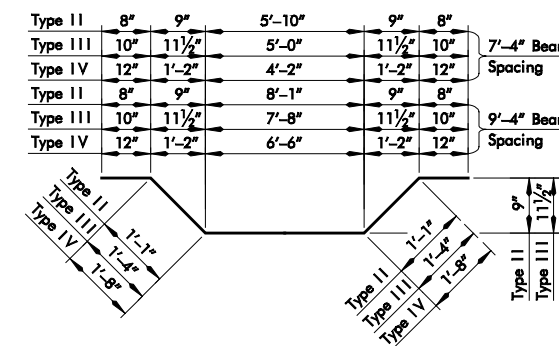
NOTE: 30° Rt. Fwd. Skew shown.  
 30° Lt. Fwd. Skew by opposite Hand.



**PICTORIAL VIEW-DIAPHRAGM CONNECTION**  
 (Interior Beam shown)



F1 BARS #8 x 8'-2" (TYPE III)  
 F1 BARS #8 x 8'-3" (TYPE III)  
 F1 BARS #8 x 8'-6" (TYPE IV)  
 F1 BARS #8 x 10'-2" (TYPE III)  
 F1 BARS #8 x 10'-3" (TYPE III)  
 F1 BARS #8 x 10'-6" (TYPE IV)



F1 BARS #8 x 9'-4" (TYPE III)  
 F1 BARS #8 x 9'-4" (TYPE III)  
 F1 BARS #8 x 9'-6" (TYPE IV)  
 F1 BARS #8 x 11'-7" (TYPE III)  
 F1 BARS #8 x 12'-0" (TYPE III)  
 F1 BARS #8 x 11'-10" (TYPE IV)

APPROVED BY BRIDGE ENGINEER: \_\_\_\_\_ DATE: \_\_\_\_\_

OKLAHOMA DEPT. OF TRANSPORTATION  
 COUNTY BRIDGE STANDARD ( ENGLISH )

MISCELLANEOUS DETAILS  
 FOR P.C. BEAMS