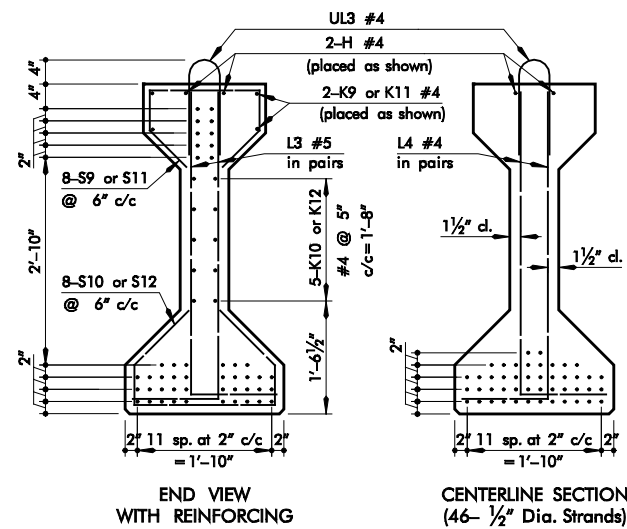
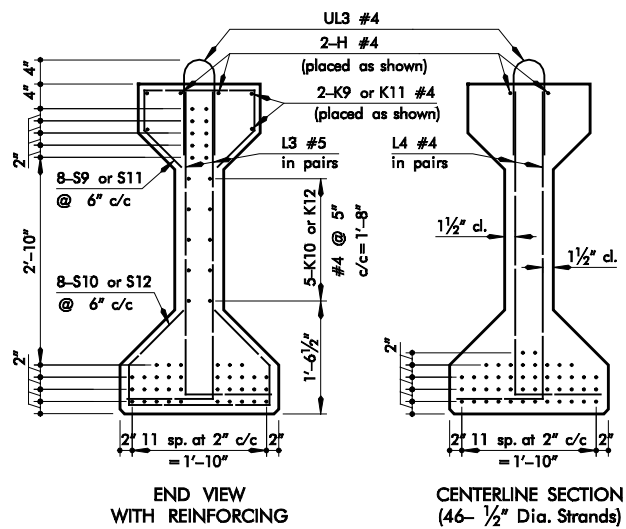
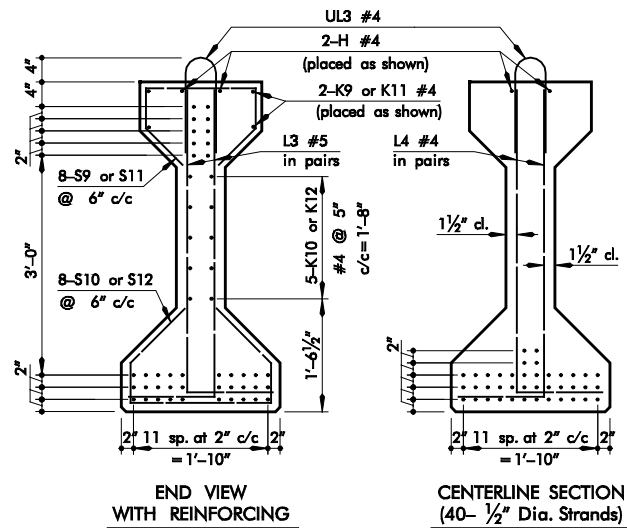
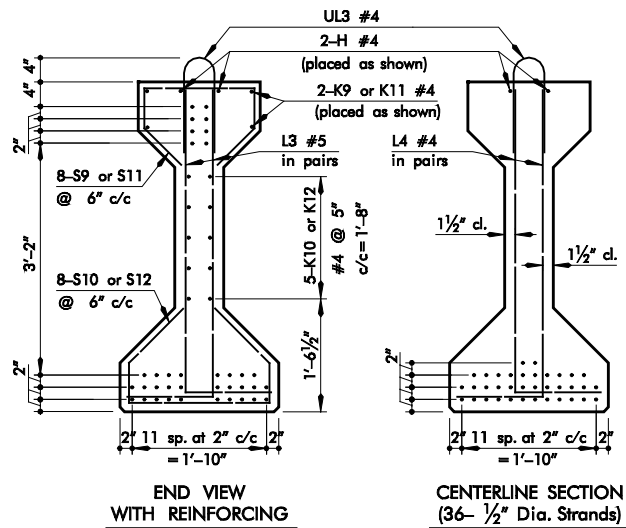
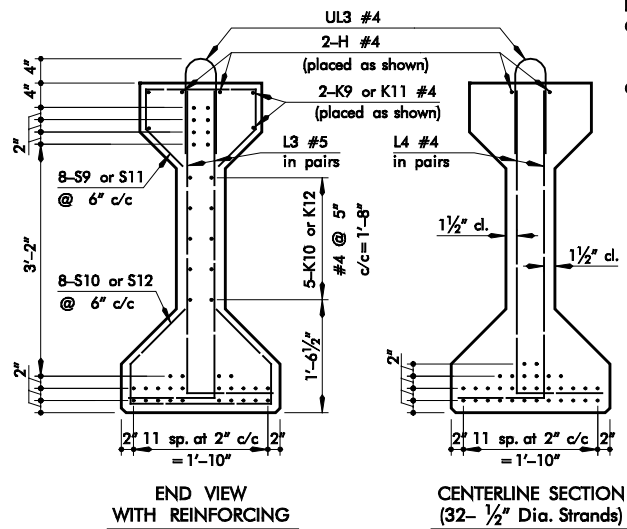
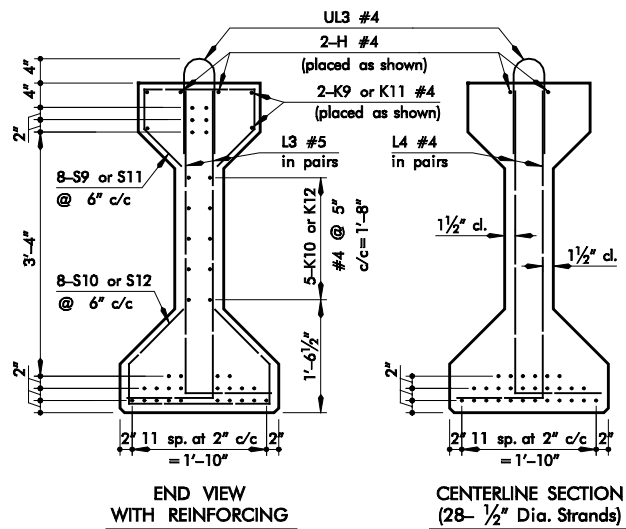


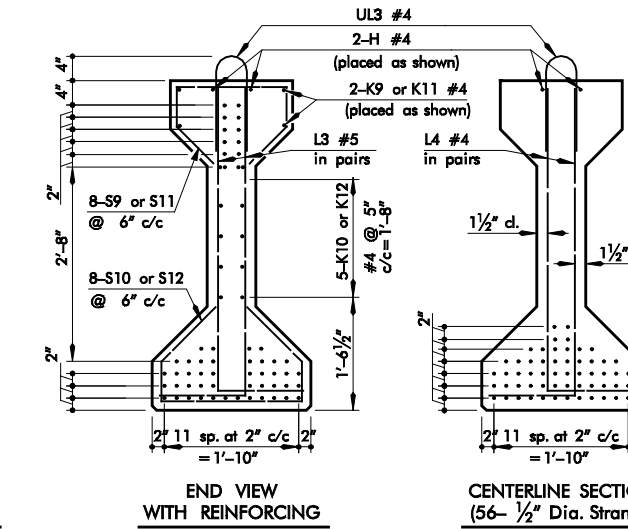
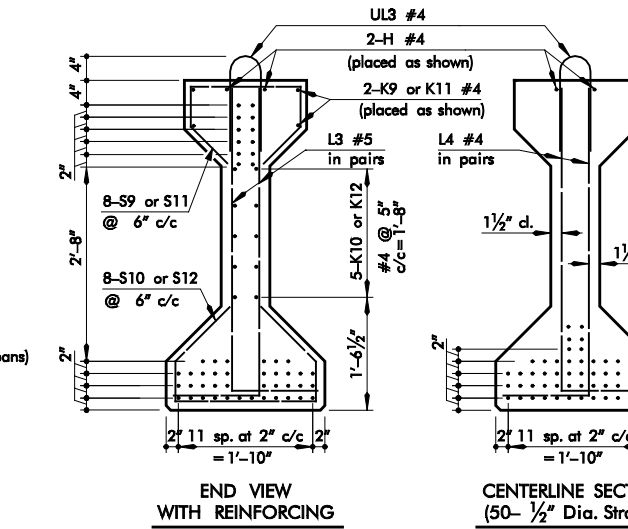
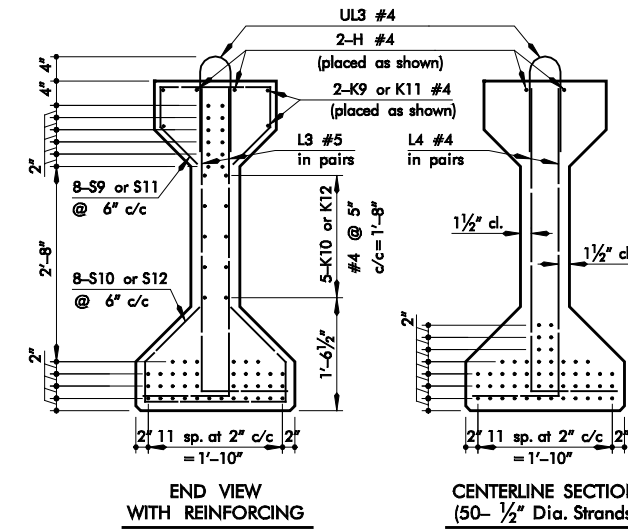
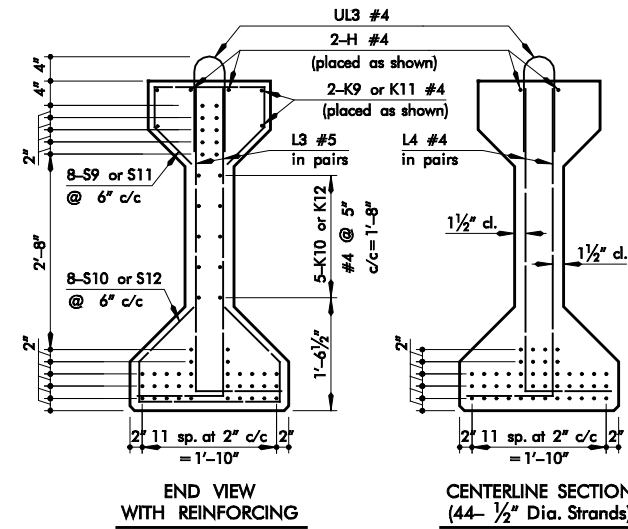
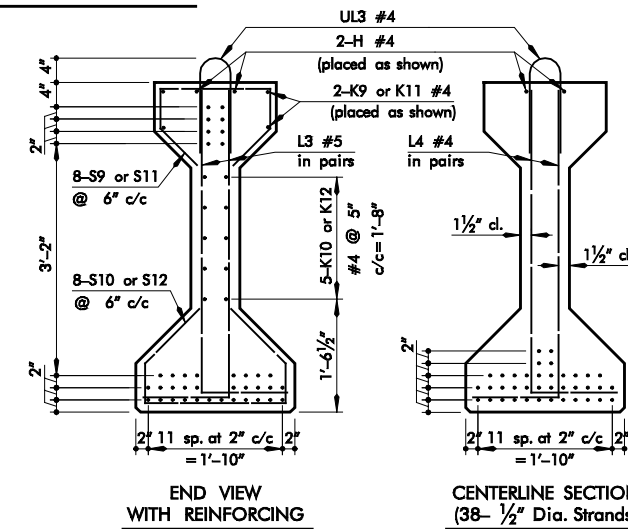
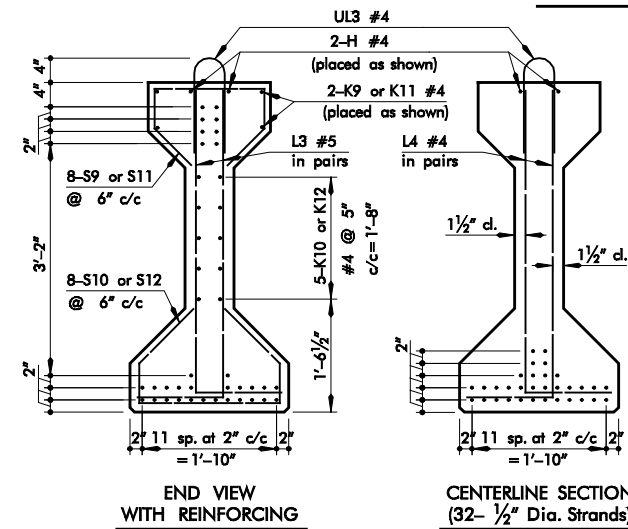
26'-9" ROADWAY BEAMS



DESIGN DATA

LOADING: HS 20-44
CONCRETE: (80', 85', 90' & 95' Spans)
f_c = 6,000 psi
f_{ci} = 4,500 psi
CONCRETE: (100' & 105' Span)
f_c = 8,000 psi
f_{ci} = 6,000 psi

32'-9" ROADWAY BEAMS



DESIGN DATA

LOADING: HS 20-44
CONCRETE: (80' and 85' Spans)
f_c = 6,000 psi
f_{ci} = 4,500 psi
CONCRETE: (90', 95', 100' & 105' Spans)
f_c = 8,000 psi
f_{ci} = 6,000 psi

APPROVED BY BRIDGE ENGINEER: _____ DATE: _____

OKLAHOMA DEPT. OF TRANSPORTATION
COUNTY BRIDGE STANDARD (ENGLISH)

P.C.BEAM SECTIONS
TYPE IV - 26'-9" AND 32'-9" RDY.