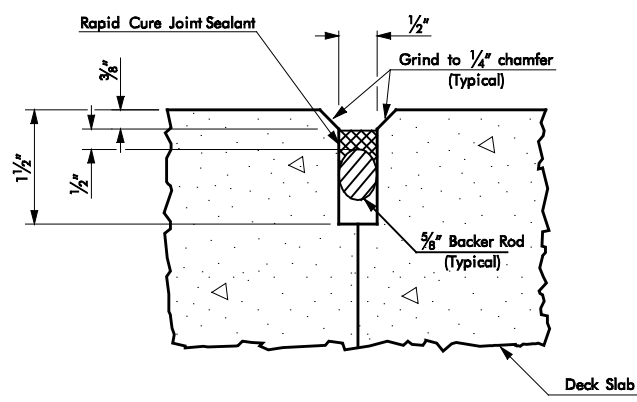
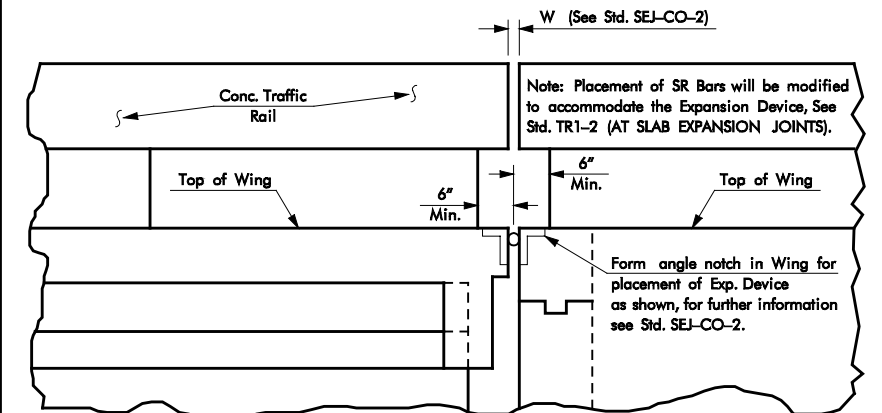


DETAIL "B"

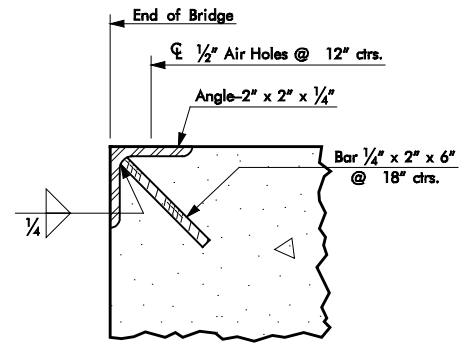
NOTE ± 1/4" Exp. Material included in 1'-0".
 ± The 2" x 2" x 1/4" Steel Angle Bumper Shall extend across the entire Roadway width of the Bridge. Material included in Structural Steel Quantities. (See Steel Angle Bumper Detail).



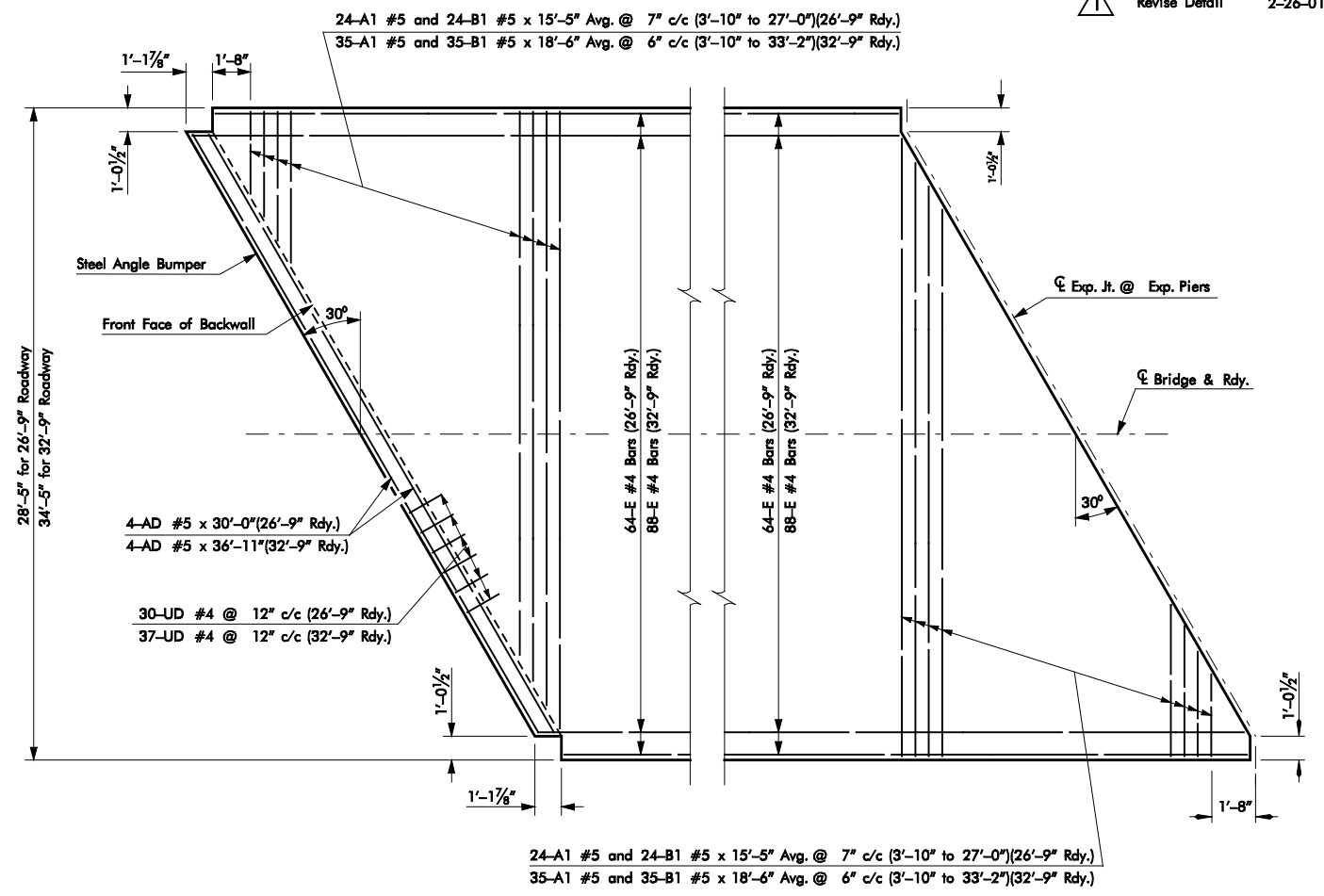
DETAIL "C"



SUPERSTRUCTURE DETAIL OF EXPANSION JOINT AT ABUTMENT



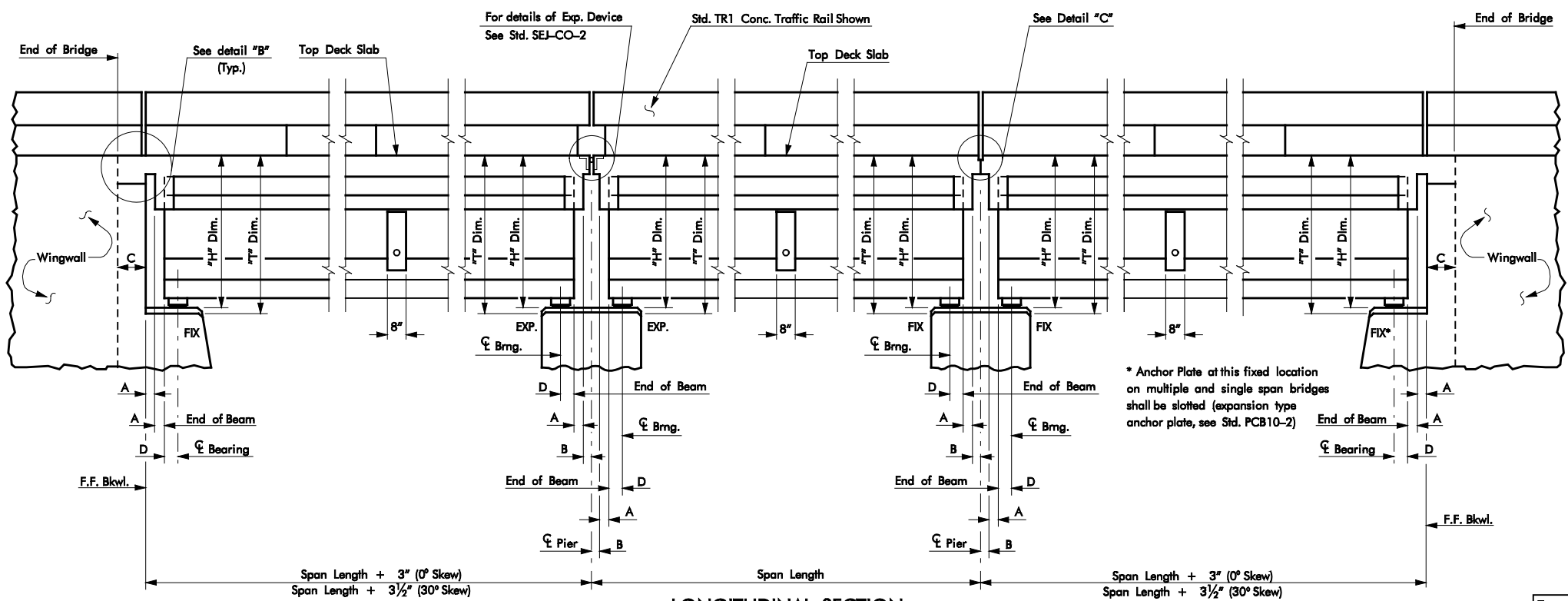
STEEL ANGLE BUMPER DETAIL



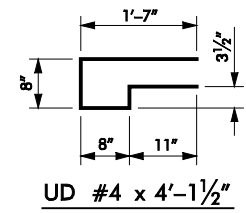
NOTES: 2 "E" Bars under each traffic rail on spans with fixed abutments shall be 1'-2" shorter than other "E" Bars.
 Provide 1'-6" Lap for all reinforcing over 60'-0" in length. All splices shall be staggered.
 30° Right Forward Skew shown. 30° Left Forward Skew by opposite hand.

TYPICAL SLAB REINFORCING AT FIXED ABUTMENTS (30° SKEW)

TYPICAL SLAB REINFORCING AT PIERS AND EXPANSION ABUTMENTS (30° SKEW)



LONGITUDINAL SECTION



UD #4 x 4'-1 1/2"

SPAN LENGTH	26'-9" ROADWAY		32'-9" ROADWAY	
	"H" DIM. ①	"T" DIM. ②	"H" DIM. ①	"T" DIM. ②
35'	4.1042'	4.4427'	4.1041'	4.4896'
40'	4.1042'	4.4427'	4.1041'	4.4896'
45'	4.1042'	4.4427'	4.1041'	4.4896'
50'	4.1042'	4.4427'	4.1041'	4.4896'
55'	4.8542'	5.1927'	4.8541'	5.2396'
60'	4.8542'	5.1927'	4.8541'	5.2396'
65'	4.8542'	5.1927'	4.8541'	5.2396'
70'	4.8542'	5.1927'	4.8541'	5.2396'
75'	4.8542'	5.1927'	4.8541'	5.2396'
80'	5.6042'	5.9427'	5.6041'	5.9896'
85'	5.6042'	5.9427'	5.6041'	5.9896'
90'	5.6042'	5.9427'	5.6041'	5.9896'
95'	5.6042'	5.9427'	5.6041'	5.9896'
100'	5.6042'	5.9427'	5.6041'	5.9896'
105'	5.6042'	5.9427'	5.6041'	5.9896'

① Dimension measured from Top of Slab to Bottom of Bearing Assembly.
 ② Dimension measured from Finish Grade Line to Top of Pier or Bridge Seat.

DIM.	TABLE OF DIMENSIONS	
	0° SKEW	30° SKEW
A	4"	4 3/8"
B	1"	1 1/8"
C	1'-0"	1'-1 1/8"
D	5 1/2"	6 3/8"
Type II & III P.C. Beams	5 1/2"	6 3/8"
Type IV P.C. Beams	5 3/4"	6 5/8"

APPROVED BY BRIDGE ENGINEER: _____ DATE: _____
 OKLAHOMA DEPARTMENT OF TRANSPORTATION
 COUNTY BRIDGE STANDARD (ENGLISH)
 LONGITUDINAL SECTION AND PLAN
 FOR P.C. BEAMS

Type II & III P.C. Beams
 Type IV P.C. Beams

1999 SPECIFICATIONS

PCB2-2 01E