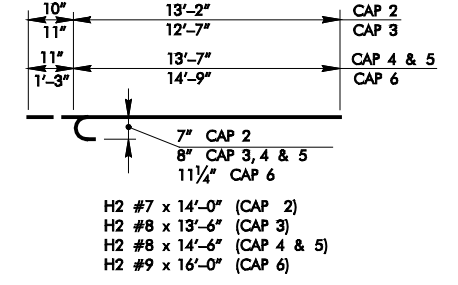
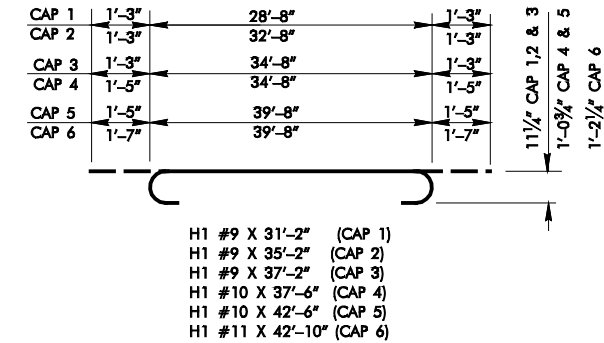


PIER CAP REINFORCING AND QUANTITY SCHEDULE																				
CAP TYPE	REINFORCING																		QUANTITIES	
	H1			H2			H3			H4			H5			S1			CLASS A CONCRETE (C.Y.)	REINFORCING STEEL (LBS.)
	SIZE	NO.	LENGTH	SIZE	NO.	LENGTH	SIZE	NO.	LENGTH	SIZE	NO.	LENGTH	SIZE	NO.	LENGTH	SIZE	NO.	LENGTH		
CAP 1	#9	3	31'-2"	—	—	—	#5	6	28'-8"	#9	3	28'-8"	#9	2	15'-0"	#4	33	13'-5"	12.9	1185
CAP 2	#9	3	35'-2"	#7	4	14'-0"	#5	6	32'-8"	#9	4	32'-8"	—	—	—	#4	37	13'-5"	14.7	1455
CAP 3	#9	3	37'-2"	#8	4	13'-6"	#5	6	34'-8"	#9	3	34'-8"	#8	2	17'-0"	#4	37	13'-5"	15.6	1515
CAP 4	#10	3	37'-6"	#8	4	14'-6"	#5	6	34'-8"	#9	4	34'-8"	#9	2	15'-0"	#4	61	13'-5"	15.6	1975
CAP 5	#10	3	42'-6"	#8	4	14'-6"	#5	6	39'-8"	#10	3	39'-8"	#8	2	16'-0"	#4	42	13'-5"	17.8	1930
CAP 6	#11	3	42'-10"	#9	4	16'-0"	#5	6	39'-8"	#10	4	39'-8"	#9	2	16'-0"	#4	64	13'-5"	17.8	2510

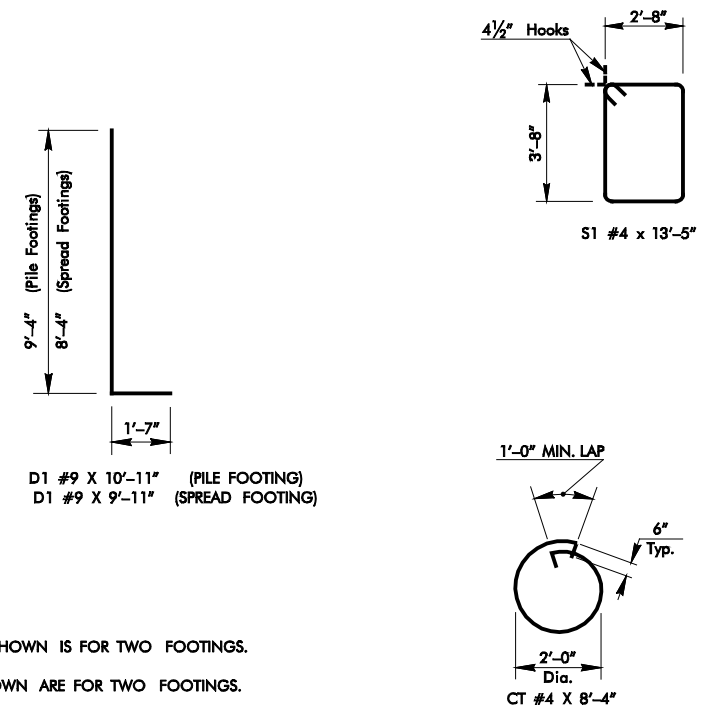


NOTE:  
ALL BAR BEND DIMENSIONS  
ARE OUT TO OUT

PIER CAP DOWEL REINFORCING				
SUPERSTRUCTURE	SMOOTH DOWEL			QUANTITY REINF. STEEL (LBS.)
	SIZE	NO.	LENGTH	
26'-0" NOMINAL ROADWAY DOUBLE TEE TYPE A, B, OR C	3/4" #	20	2'-0"	60
26'-0" NOMINAL ROADWAY DOUBLE TEE TYPE D OR E	3/4" #	19	2'-0"	57
32'-0" NOMINAL ROADWAY DOUBLE TEE TYPE A, B, OR C	3/4" #	25	2'-0"	75
32'-0" NOMINAL ROADWAY DOUBLE TEE TYPE D OR E	3/4" #	23	2'-0"	69

PILE FOOTING REINFORCING AND QUANTITY SCHEDULE																
FOOTING TYPE	FT1	NO. OF PILES PER FOOTING	REINFORCING ④												QUANTITIES ⑤	
			F1			F2			D1			CT			CLASS A CONCRETE (C.Y.)	REINFORCING STEEL (LBS.)
			SIZE	NO.	LENGTH	SIZE	NO.	LENGTH	SIZE	NO.	LENGTH	SIZE	NO.	LENGTH		
PF1	7'-0"	4	#6	36	6'-6"	#5	24	6'-6"	#9	14	10'-11"	#4	8	8'-4"	12.7	1080
PF2	8'-0"	4	#6	40	7'-6"	#5	24	7'-6"	#9	14	10'-11"	#4	8	8'-4"	16.6	1200
PF3	8'-0"	4	#6	40	7'-6"	#5	24	7'-6"	#9	28	10'-11"	#4	8	8'-4"	16.6	1720
PF4	8'-0"	5	#7	40	7'-6"	#5	36	7'-6"	#9	14	10'-11"	#4	8	8'-4"	16.6	1460
PF5	8'-0"	5	#7	40	7'-6"	#5	36	7'-6"	#9	28	10'-11"	#4	8	8'-4"	16.6	1980
PF6	9'-0"	5	#8	48	8'-6"	#5	36	8'-6"	#9	14	10'-11"	#4	8	8'-4"	21.0	1980
PF7	9'-0"	5	#9	48	8'-6"	#5	36	8'-6"	#9	28	10'-11"	#4	8	8'-4"	21.0	2790

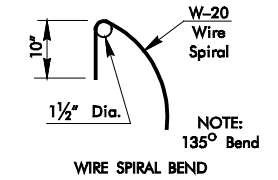
SPREAD FOOTING REINFORCING AND QUANTITY SCHEDULE													
FOOTING TYPE	FT1	REINFORCING ④										QUANTITIES ⑤	
		F1				D1			CT			CLASS A CONCRETE (C.Y.)	REINFORCING STEEL (LBS.)
		SIZE	NO.	LENGTH	SPACING	SIZE	NO.	LENGTH	SIZE	NO.	LENGTH		
SF1	7'-0"	#7	32	6'-6"	11"	#9	14	9'-11"	#4	6	8'-4"	9.1	875
SF2	7'-6"	#7	32	7'-0"	12"	#9	14	9'-11"	#4	6	8'-4"	10.4	910
SF3	8'-0"	#7	36	7'-6"	11"	#9	14	9'-11"	#4	6	8'-4"	11.9	1000
SF4	8'-0"	#7	36	7'-6"	11"	#9	28	9'-11"	#4	6	8'-4"	11.9	1420
SF5	8'-6"	#8	36	8'-0"	12"	#9	14	9'-11"	#4	6	8'-4"	13.4	1220
SF6	8'-6"	#8	36	8'-0"	12"	#9	28	9'-11"	#4	6	8'-4"	13.4	1635
SF7	9'-0"	#8	40	8'-6"	11"	#9	14	9'-11"	#4	6	8'-4"	15.0	1360
SF8	9'-0"	#8	40	8'-6"	11"	#9	28	9'-11"	#4	6	8'-4"	15.0	1775
SF9	9'-6"	#8	40	9'-0"	12"	#9	28	9'-11"	#4	6	8'-4"	16.7	1830



④ REINFORCING SHOWN IS FOR TWO FOOTINGS.  
⑤ QUANTITIES SHOWN ARE FOR TWO FOOTINGS.

COLUMN REINFORCING AND QUANTITY SCHEDULE									
COLUMN TYPE	REINFORCING ①							QUANTITIES ③	
	CV1			CS ②				CLASS A CONCRETE (C.Y./L.F.)	REINFORCING STEEL (LBS. AND LBS./L.F.)
	SIZE	NO.	LENGTH	SIZE	NO.	LENGTH			
COL 1	#9	14	H - 4"	W-20	2	(H - 4.33') 12.61 + 14.25'	0.36	192 LBS. + 65 LBS./L.F.	
COL 2	#9	28	H - 4"	W-20	2	(H - 4.33') 12.61 + 14.25'	0.36	375 LBS. + 113 LBS./L.F.	

① Column reinforcing shown is for two columns.  
② For each splice of column spiral add 4'-4" to the scheduled length.  
③ The total quantities shown are for two columns and the Unit/L.F. quantities shown are based upon the quantities contained in two columns per Foot of height of column.



APPROVED BY BRIDGE ENGINEER: \_\_\_\_\_ DATE: \_\_\_\_\_

OKLAHOMA DEPARTMENT OF TRANSPORTATION  
COUNTY BRIDGE STANDARD ( ENGLISH )

PIER SCHEDULES FOR PIERS  
UNDER DOUBLE TEES

1999 SPECIFICATIONS PIER3-2 OIE CB-13E