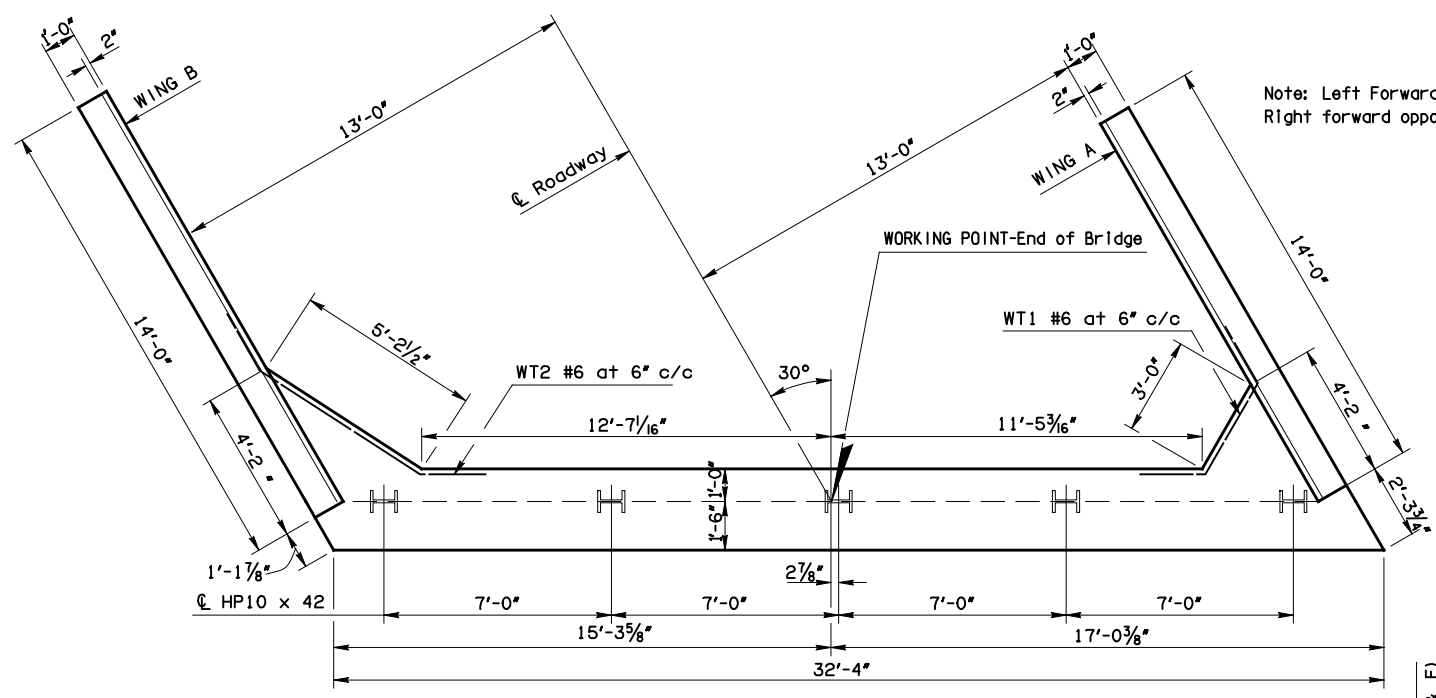
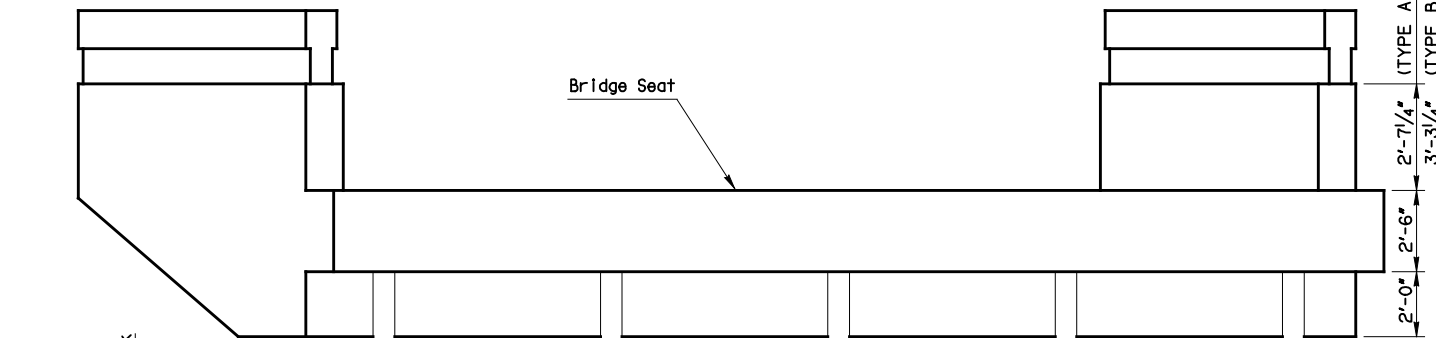


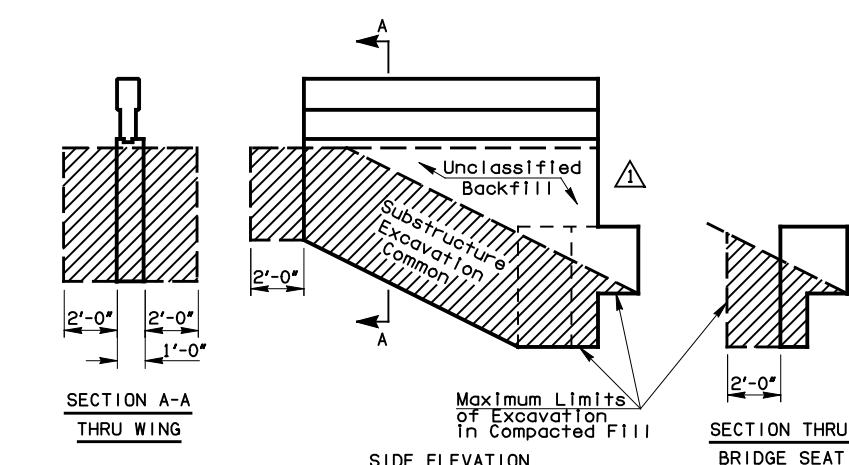
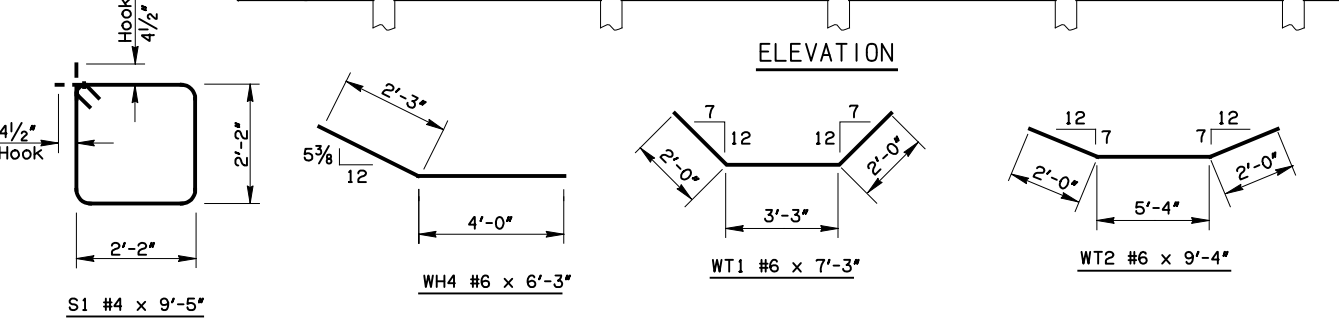
⚠ Revise Excav. Diagram 7-28-00  
Remove Notes  
⚠ Revise Piles, 3-23-01  
Pay Item



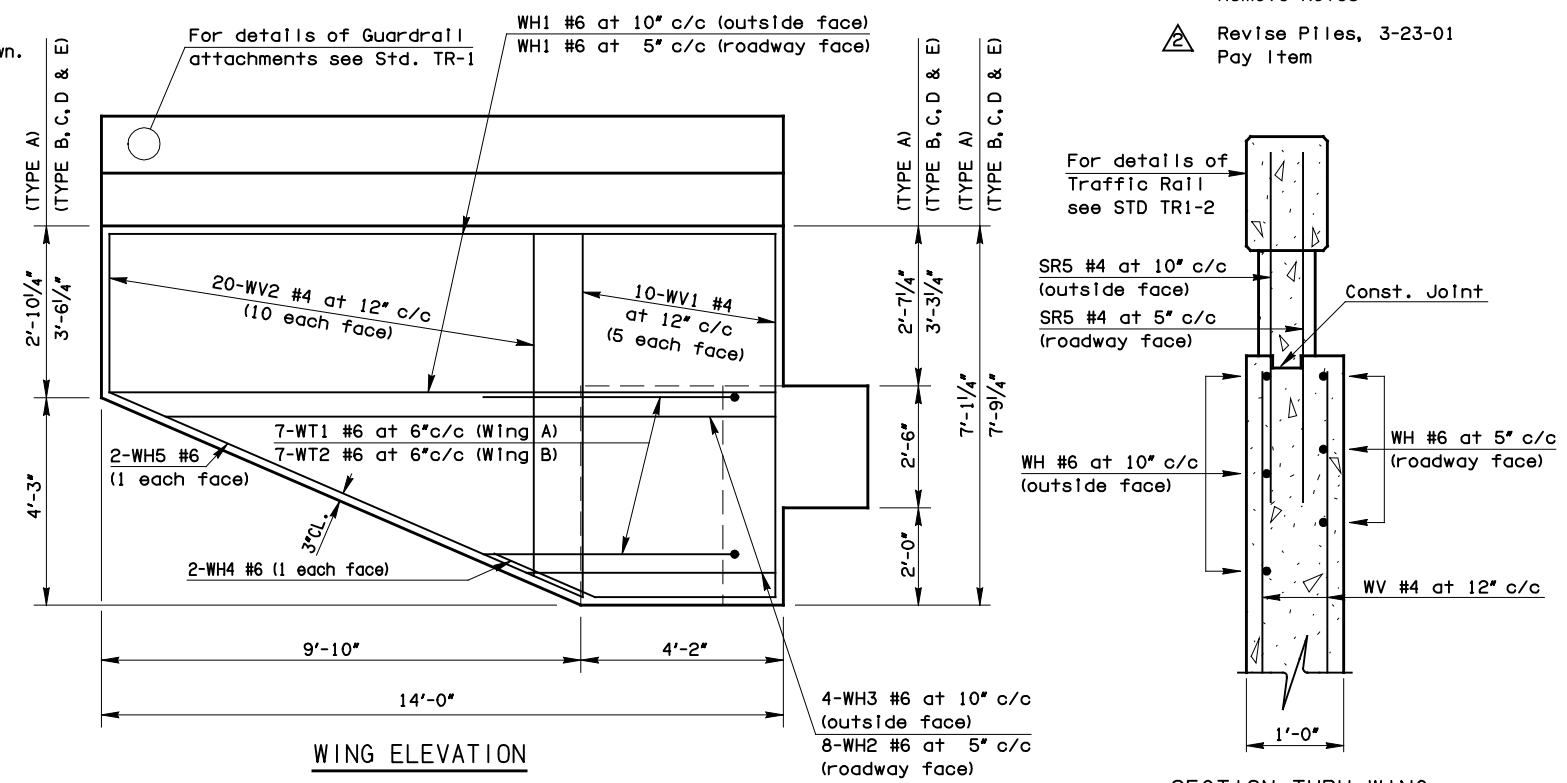
PLAN



ELEVATION



TYPICAL ABUTMENT EXCAVATION DIAGRAM



WING ELEVATION

SECTION THRU WING

Note: WT Bars shall be in place before bridge seat is poured.

BAR LIST (ONE ABUTMENT) TYPE A

MARK	NO.	SIZE	SHAPE	LENGTH
BH1	9	#7	Str.	32'-0"
BH2	6	#4	Str.	32'-0"
BH3	15	#4	Str.	2'-2"
BV1	66	#5	Str.	3'-0"
D1	20	3/4" Ø	Str.	2'-0"
S1	33	#4	Bnt.	9'-5"
SR5	102	#4	Str.	3'-7"
WH1	22	#6	Str.	13'-8"
WH2	16	#6	Str.	9'-0" Avg.
WH3	8	#6	Str.	9'-4" Avg.
WH4	4	#6	Bnt..	6'-3"
WH5	4	#6	Str.	10'-6"
WT1	7	#6	Bnt.	7'-3"
WT2	7	#6	Bnt.	9'-4"
WV1	20	#4	Str.	6'-8"
WV2	40	#4	Str.	4'-4" Avg.

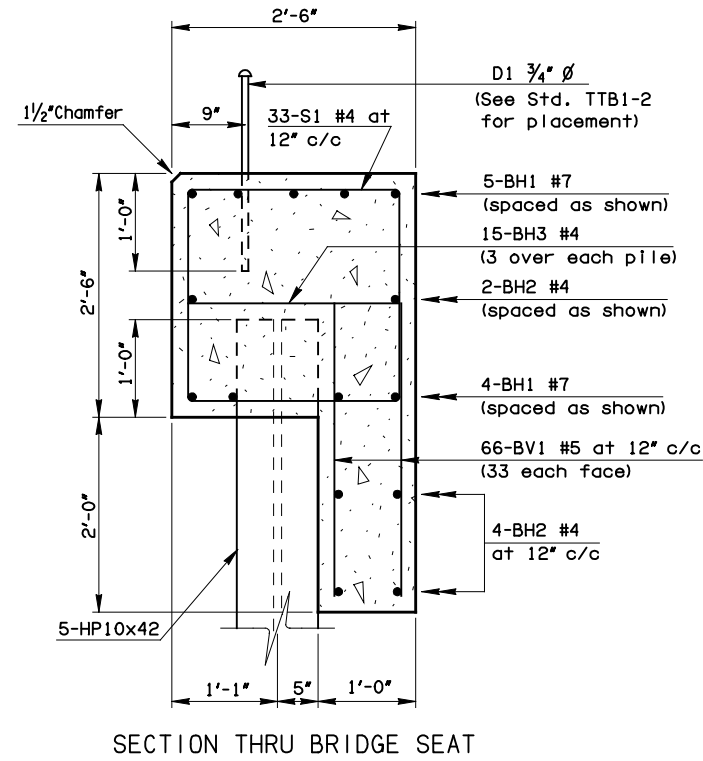
BAR LIST (ONE ABUTMENT) TYPE B, C, D AND E

MARK	NO.	SIZE	SHAPE	LENGTH
BH1	9	#7	Str.	32'-0"
BH2	6	#4	Str.	32'-0"
BH3	15	#4	Str.	2'-2"
BV1	66	#5	Str.	3'-0"
D1	20	3/4" Ø	Str.	2'-0"
S1	33	#4	Bnt.	9'-5"
SR5	102	#4	Str.	3'-7"
WH1	28	#6	Str.	13'-8"
WH2	16	#6	Str.	9'-0" Avg.
WH3	8	#6	Str.	9'-4" Avg.
WH4	4	#6	Bnt..	6'-3"
WH5	4	#6	Str.	10'-6"
WT1	7	#6	Bnt.	7'-3"
WT2	7	#6	Bnt.	9'-4"
WV1	20	#4	Str.	7'-4"
WV2	40	#4	Str.	5'-0" Avg.

- ① Smooth dowels with metal expansion cap
- ② 5'-4" to 12'-8"
- ③ 6'-4" to 12'-4"
- ④ 2'-5" to 6'-3"
- ⑤ 3'-1" to 6'-11"

QUANTITIES - ONE ABUTMENT

ITEM	UNIT	Type A	Type B, C, D or E
Unclassified Backfill	C.Y.	18.0	25.0
Substructure Excavation Common	C.Y.	33.0	34.0
Concrete Rail	L.F.	28.0	28.0
Class A Concrete	C.Y.	16.7	17.4
Reinforcing Steel (Grade 60)	LB.	2720	2870



SECTION THRU BRIDGE SEAT

APPROVED BY BRIDGE ENGINEER: \_\_\_\_\_ DATE: \_\_\_\_\_

OKLAHOMA DEPT. OF TRANSPORTATION  
COUNTY BRIDGE STANDARD ( ENGLISH )  
DETAILS OF ABUTMENT FOR DOUBLE TEES  
Skewed 30° - 26'-0" Nominal Roadway