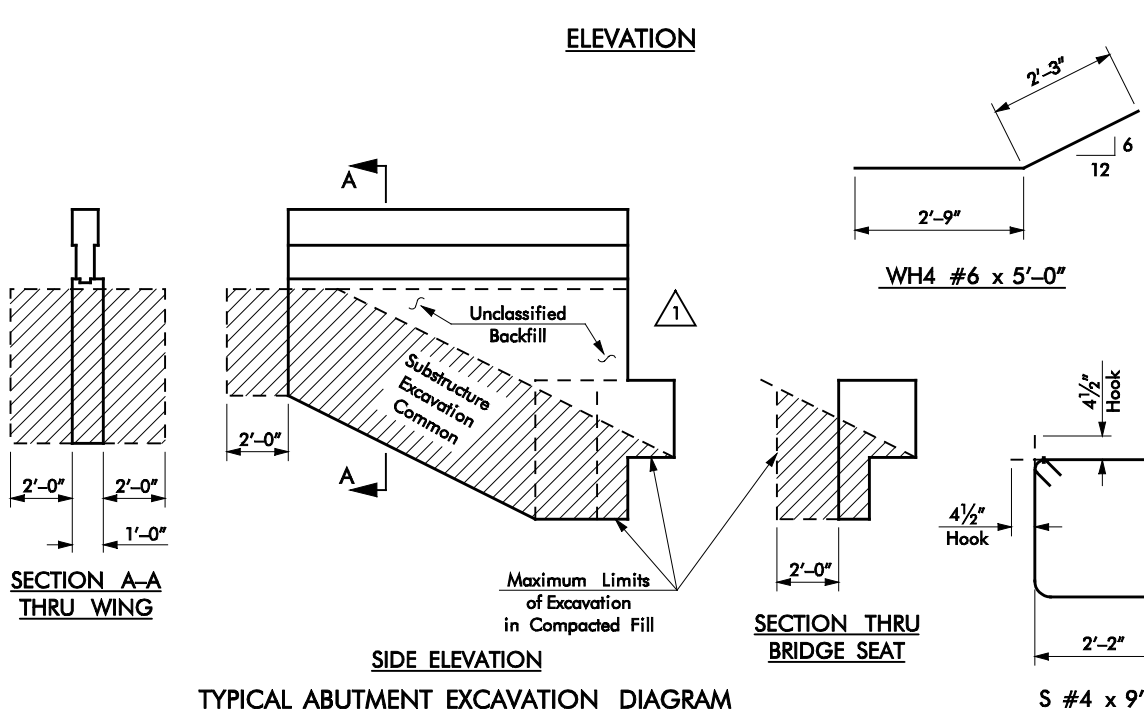
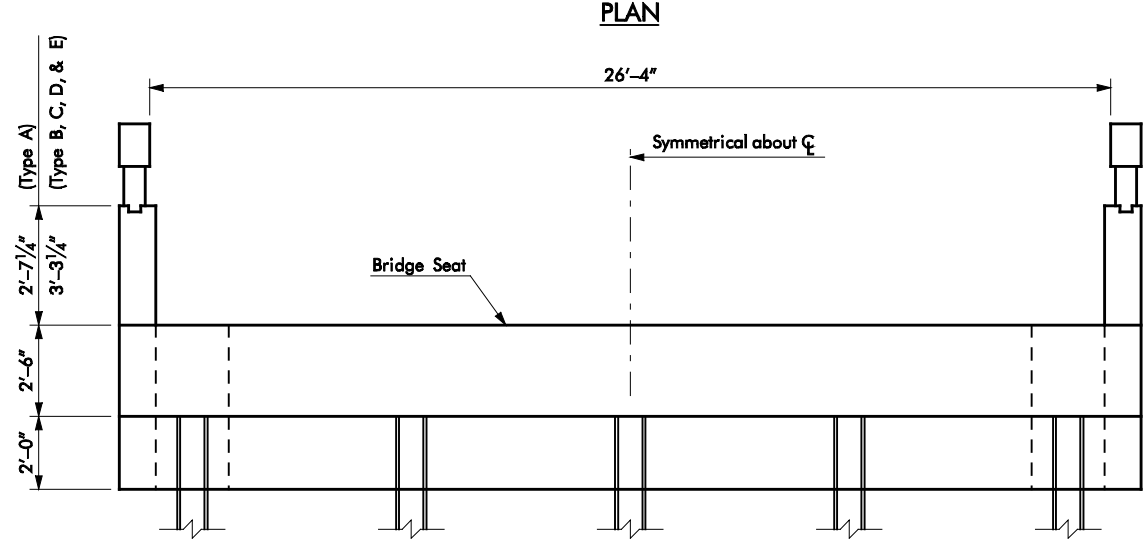
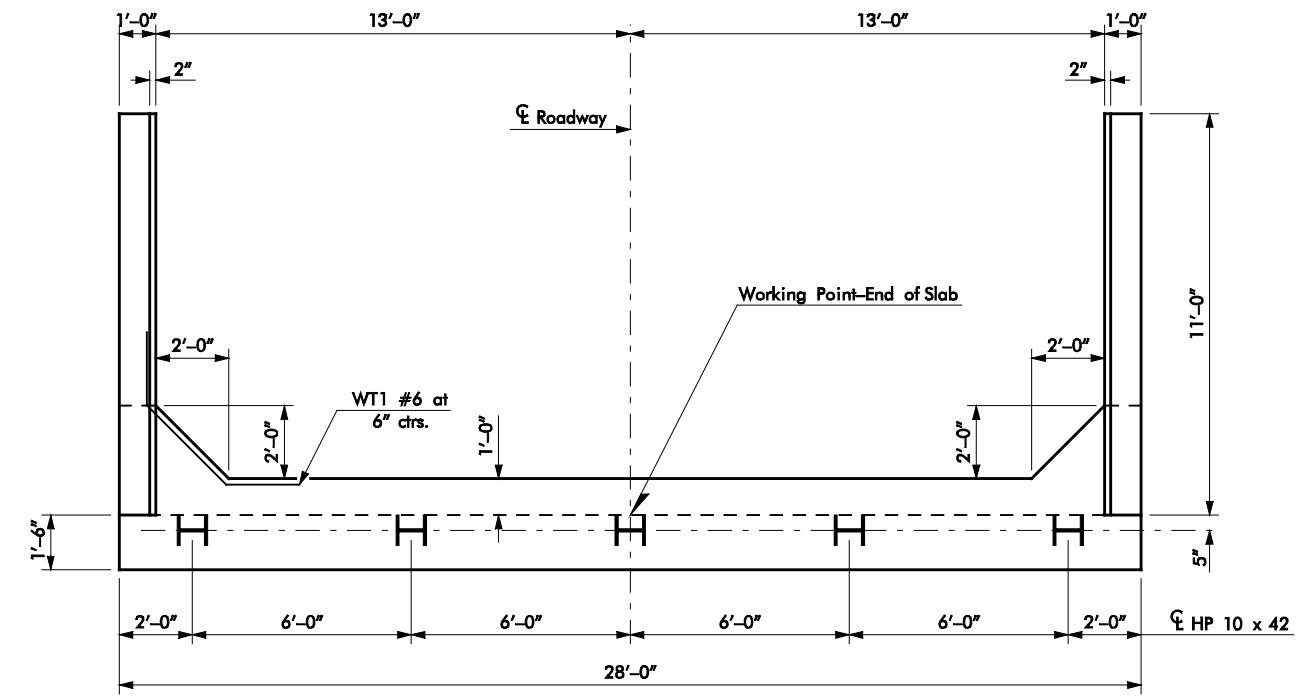
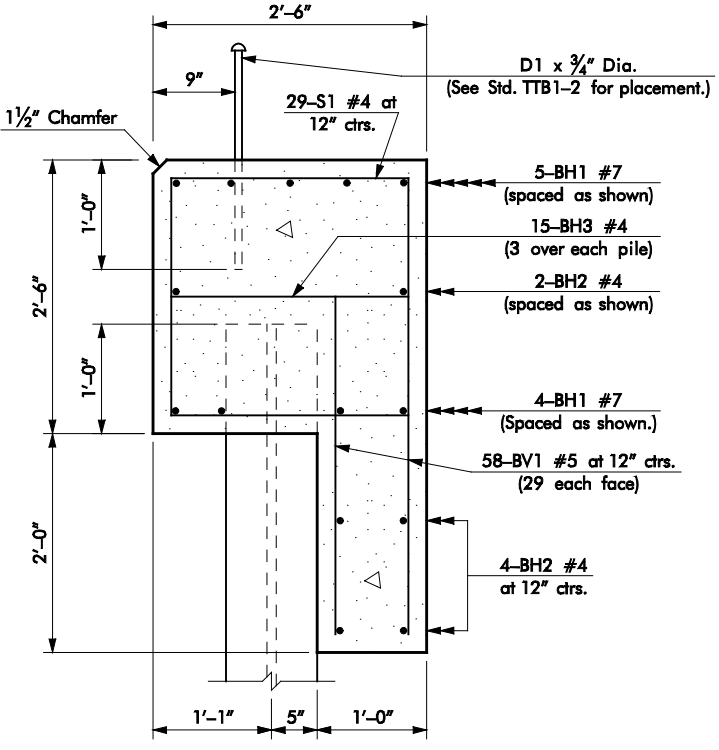
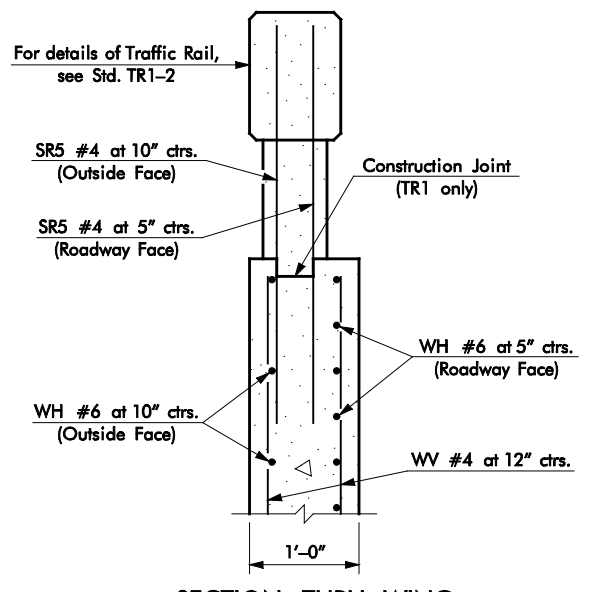
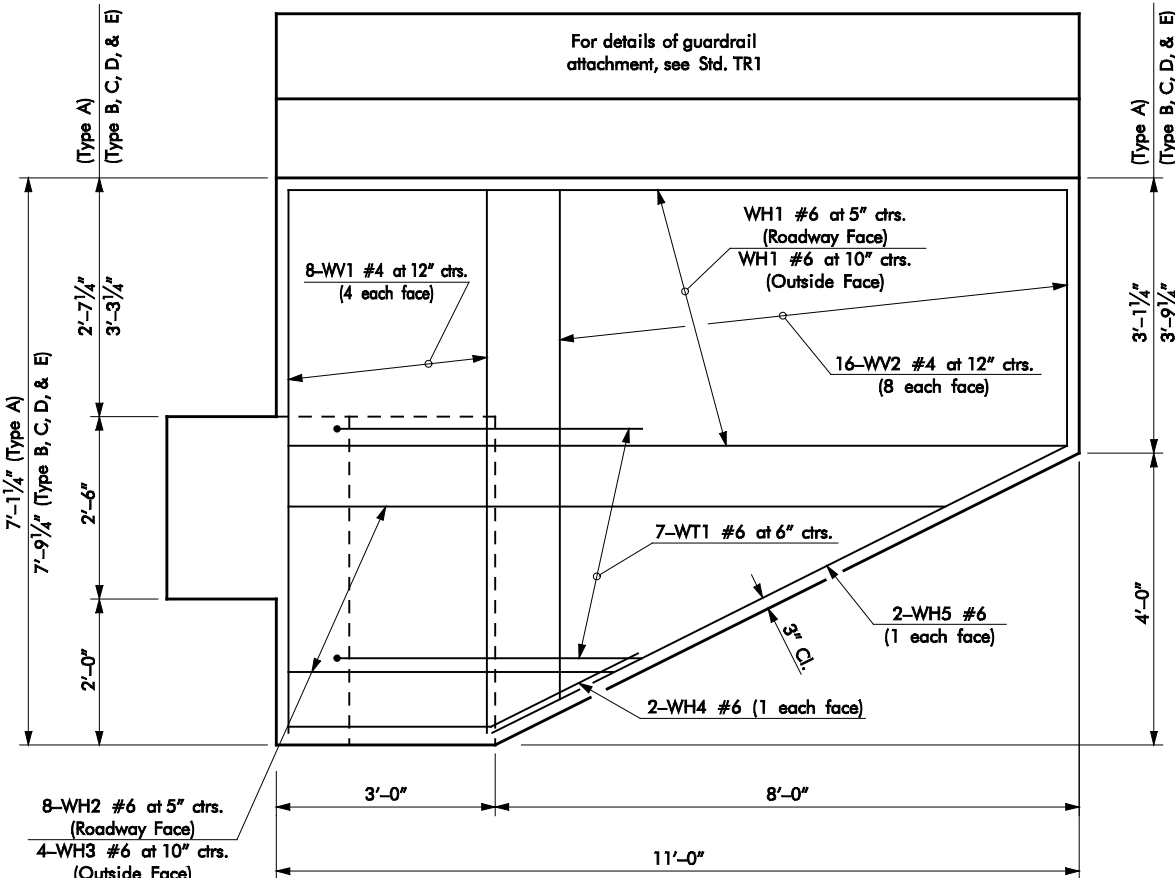


- 1 Revise Excav. Diagram 7-28-00
Remove Notes
- 2 Revise Pay Item 3-23-01



Note: WT Bars shall be in place before bridge seat is poured.



QUANTITIES - ONE ABUTMENT

ITEM	UNIT	TYPE A	TYPE B, C, D, or E
Unclassified Backfill	C.Y.	15.0	20.0
Substructure Excavation Common	C.Y.	29.0	30.0
Concrete Rail	L.F.	22.0	22.0
Class A Concrete	C.Y.	13.5	14.1
Reinforcing Steel (Grade 60)	LB.	2320.0	2470.0

BAR LIST (ONE ABUTMENT) TYPE A

MARK	NO.	SIZE	FORM	LENGTH	VARIANCE
BH1	9	#7	STR	27'-8"	
BH2	6	#4	STR	27'-8"	
BH3	15	#4	STR	2'-2"	
BV1	58	#5	STR	3'-0"	
D1	20	3/4" Dia.	STR	2'-0"	
S1	29	#4	BNT	9'-5"	
SR5	82	#4	STR	3'-7"	
WH1	26	#6	STR	10'-8"	
WH2	16	#6	STR	6'-7" Avg.	3'-6" to 9'-8"
WH3	8	#6	STR	7'-0" Avg.	4'-4" to 9'-8"
WH4	4	#6	BNT	5'-0"	
WH5	4	#6	STR	8'-8"	
WT1	14	#6	BNT	7'-1"	
WV1	16	#4	STR	6'-9"	
WV2	32	#4	STR	4'-6" Avg.	2'-9" to 6'-3"

BAR LIST (ONE ABUTMENT) TYPE B, C, D, & E

MARK	NO.	SIZE	FORM	LENGTH	VARIANCE
BH1	9	#7	STR	27'-8"	
BH2	6	#4	STR	27'-8"	
BH3	15	#4	STR	2'-2"	
BV1	58	#5	STR	3'-0"	
D1	20	3/4" Dia.	STR	2'-0"	
S1	29	#4	BNT	9'-5"	
SR5	82	#4	STR	3'-7"	
WH1	34	#6	STR	10'-8"	
WH2	16	#6	STR	6'-7" Avg.	3'-6" to 9'-8"
WH3	8	#6	STR	7'-0" Avg.	4'-4" to 9'-8"
WH4	4	#6	BNT	5'-0"	
WH5	4	#6	STR	8'-8"	
WT1	14	#6	BNT	7'-1"	
WV1	16	#4	STR	7'-5"	
WV2	32	#4	STR	5'-2" Avg.	3'-5" to 6'-11"

① Smooth dowels with metal expansion cap.

APPROVED BY BRIDGE ENGINEER: _____ DATE: _____

OKLAHOMA DEPT. OF TRANSPORTATION
COUNTY BRIDGE STANDARD (ENGLISH)
DETAILS OF ABUTMENT FOR DOUBLE TEES
SKEWED 0° - 26'-0" NOMINAL ROADWAY