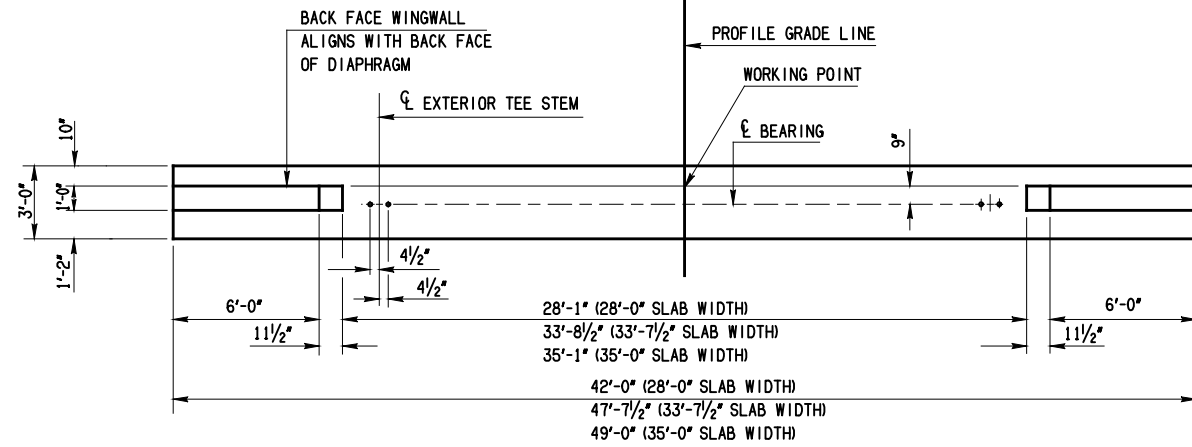
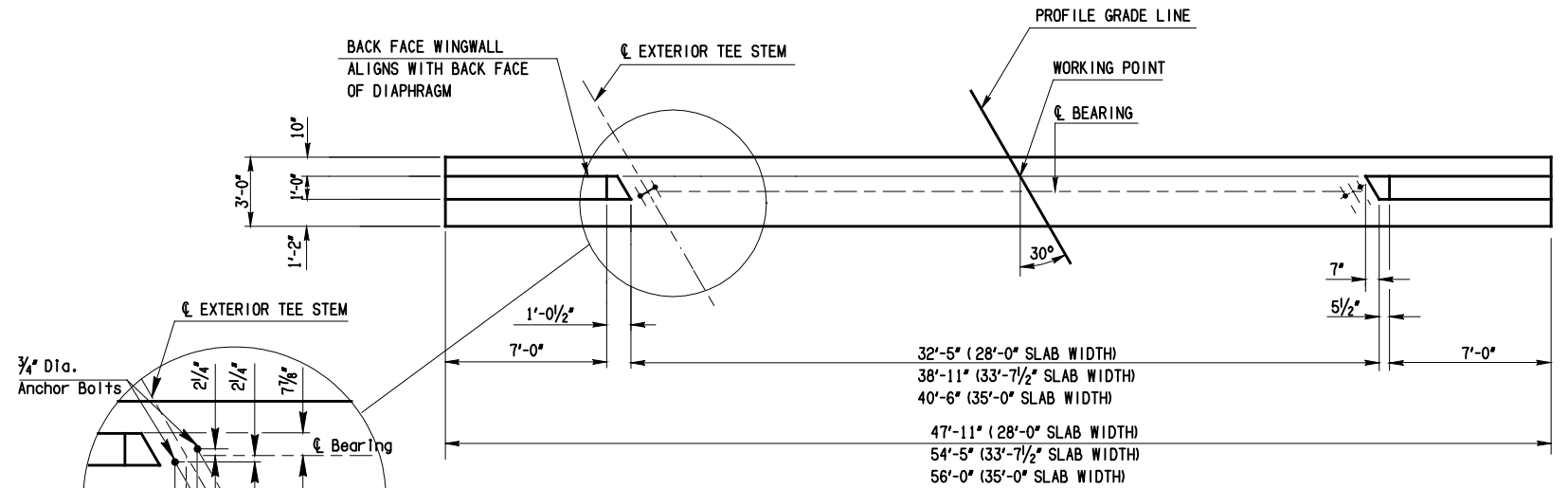


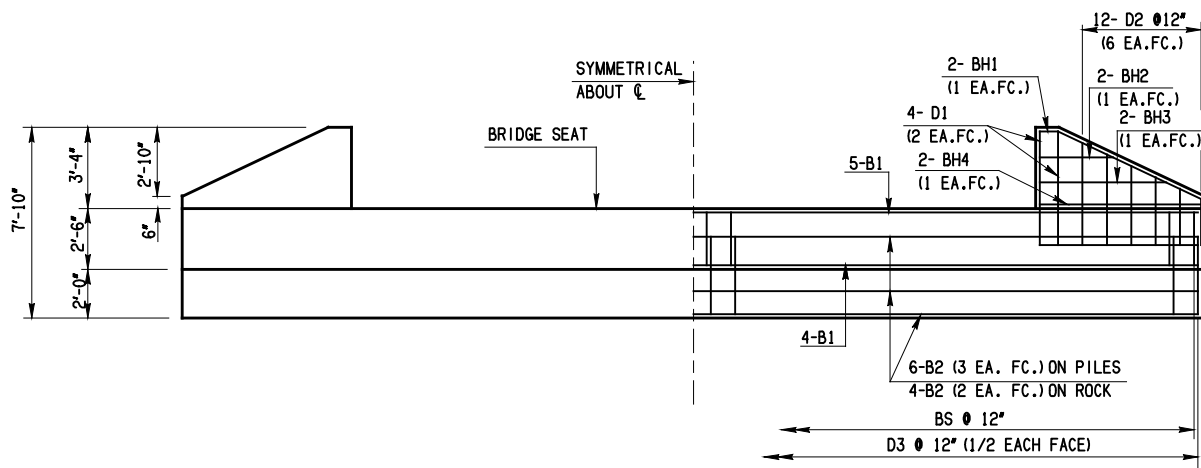
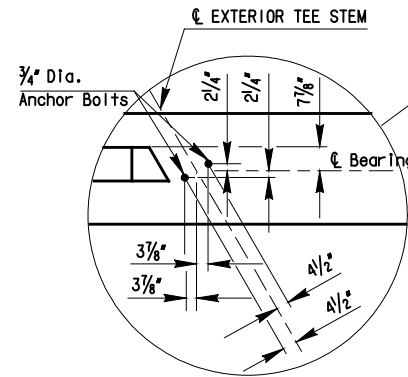
NOTE :
FOR PILING LAYOUT PLAN SEE STD. TTA2-2



PLAN

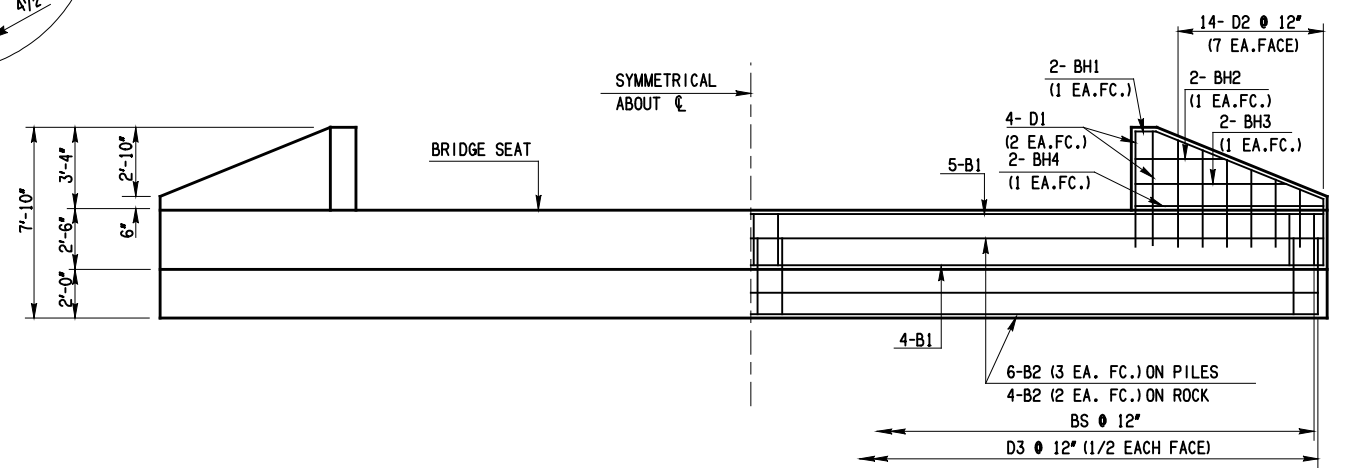


PLAN



ELEVATION

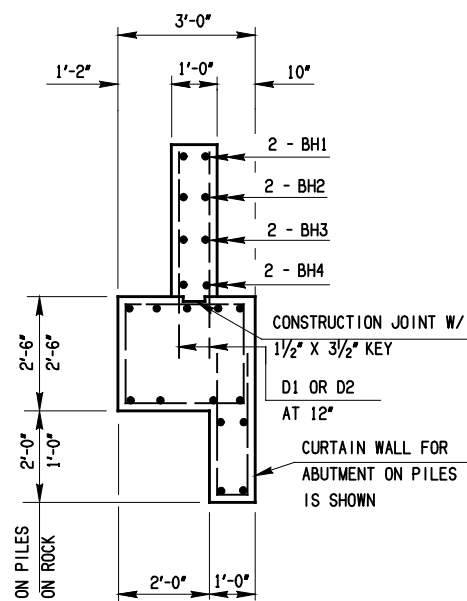
0° SKEW ABUTMENT



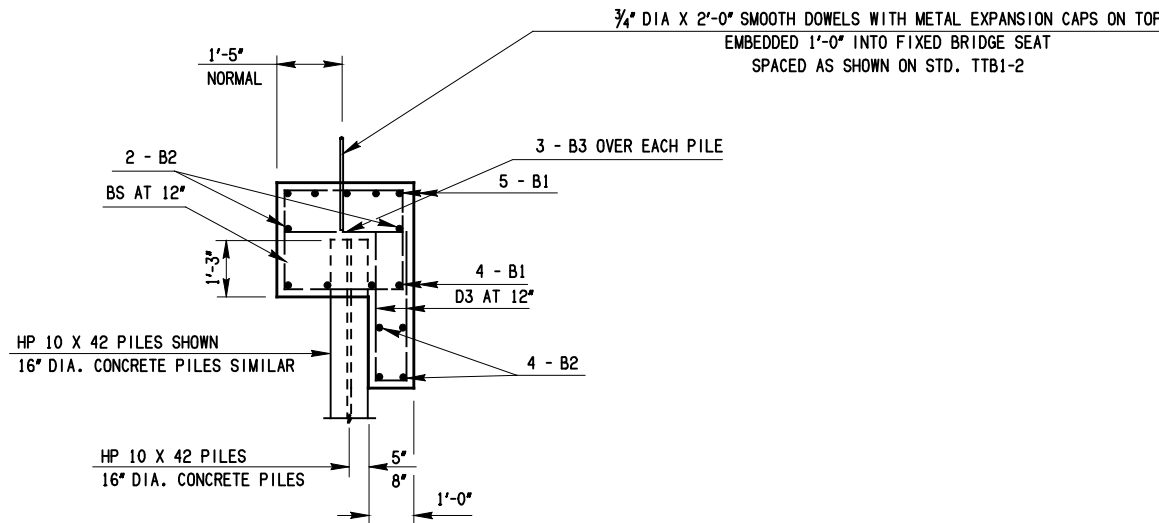
ELEVATION

30° SKEW ABUTMENT

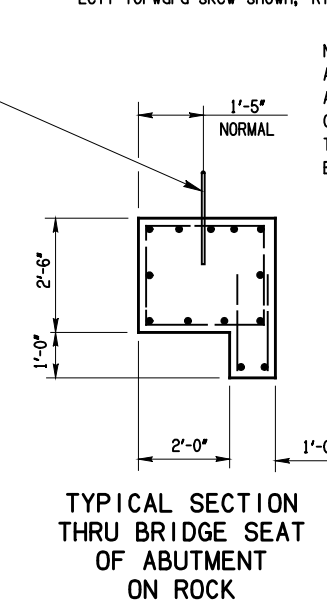
Left forward skew shown, Right forward opposite hand



TYPICAL SECTION THRU
ABUTMENT WINGWALL



TYPICAL SECTION THRU BRIDGE SEAT
OF FIXED ABUTMENT ON PILES



TYPICAL SECTION
THRU BRIDGE SEAT
OF ABUTMENT
ON ROCK

NOTE :
ALL EXPOSED EDGES SHALL BE CHAMFERED 1".
ALL REINFORCING STEEL SHALL HAVE A 2" CLEARANCE UNLESS NOTED OTHERWISE.
CONCRETE SURFACE UNDER PRECAST DOUBLE
TEE MEMBER SUPPORTS SHALL BE GROUND WITH A CARBORUNDUM BRICK
BEFORE PLACEMENT OF MEMBER TO SECURE FULL BEARING ON CONCRETE.

APPROVED BY BRIDGE ENGINEER:	DATE:
OKLAHOMA DEPT. OF TRANSPORTATION COUNTY BRIDGE STANDARD (ENGLISH)	
DETAILS OF ABUTMENT FOR DOUBLE TEES (2' - 6") DEEP SEAT	
1999 SPECIFICATIONS	TTA1-2 01E CB-06E