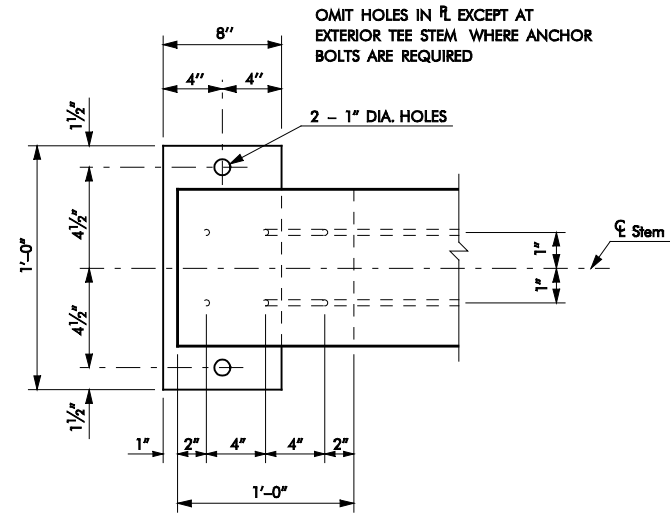
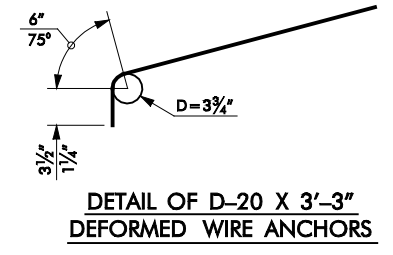


ELASTOMERIC BEARING PAD SCHEDULE	
DOUBLE TEE TYPE	PAD SIZE
A	7" x 3/4" x 12"
B, C, D & E	8" x 3/4" x 12"

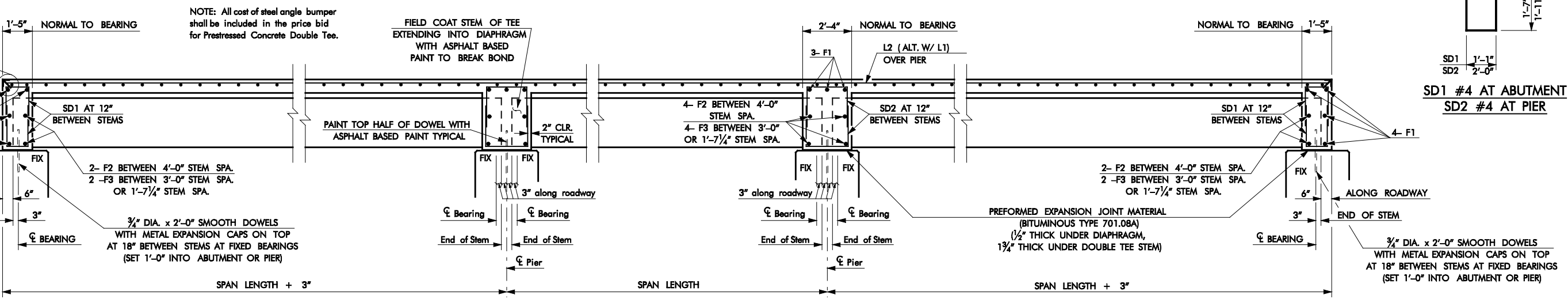
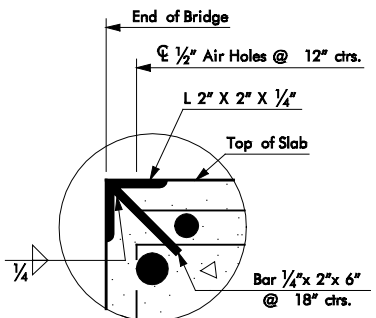
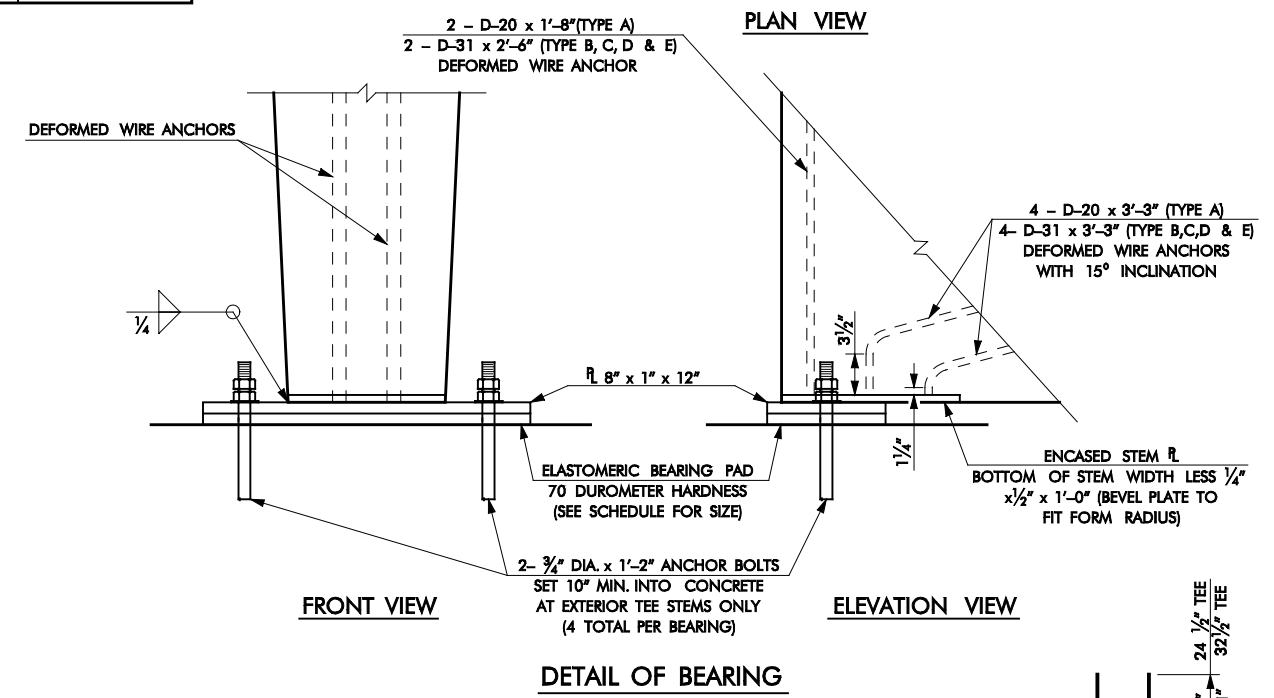


**0° SKEW**  
28'-0" SLAB WIDTH WITH TYPE A, B, OR C DOUBLE TEES SHOWN.  
FOR ADDITIONAL CONDITIONS. SEE CROSS SECTIONS ON STD. TT81-2.

**30° SKEW**  
LEFT FORWARD SKEW SHOWN,  
RIGHT FORWARD SKEW OPPOSITE HAND

**SLAB REINFORCING PLANS**

**ANCHOR ASSEMBLY NOTES:**  
The expansion bearing shall be placed after the substructure is poured. After the anchor assembly is painted, styrofoam blocks or an approved material shall be placed as shown over each anchor bolt to allow the assembly to expand as designed. The preformed expansion joint filler (701.08A) shall be placed under tee stems and diaphragms.  
All items in the anchor assembly, including anchor bolts, will not be paid for as a separate item and shall be included in the double tee quantity. All structural steel shall be M270 Grade 50W.  
After installation and welding of anchor assembly and before diaphragms are poured, all exposed surfaces of anchor assembly shall be painted with IZ-E-U in accordance with section 730.02(a) of the Standard Specifications. All cost of painting shall be included in the price bid for other items of work.



**LONGITUDINAL SECTION**

APPROVED BY BRIDGE ENGINEER: \_\_\_\_\_ DATE: \_\_\_\_\_  
OKLAHOMA DEPT. OF TRANSPORTATION  
COUNTY BRIDGE STANDARD ( ENGLISH )  
DOUBLE TEE BRIDGE SLAB DETAILS