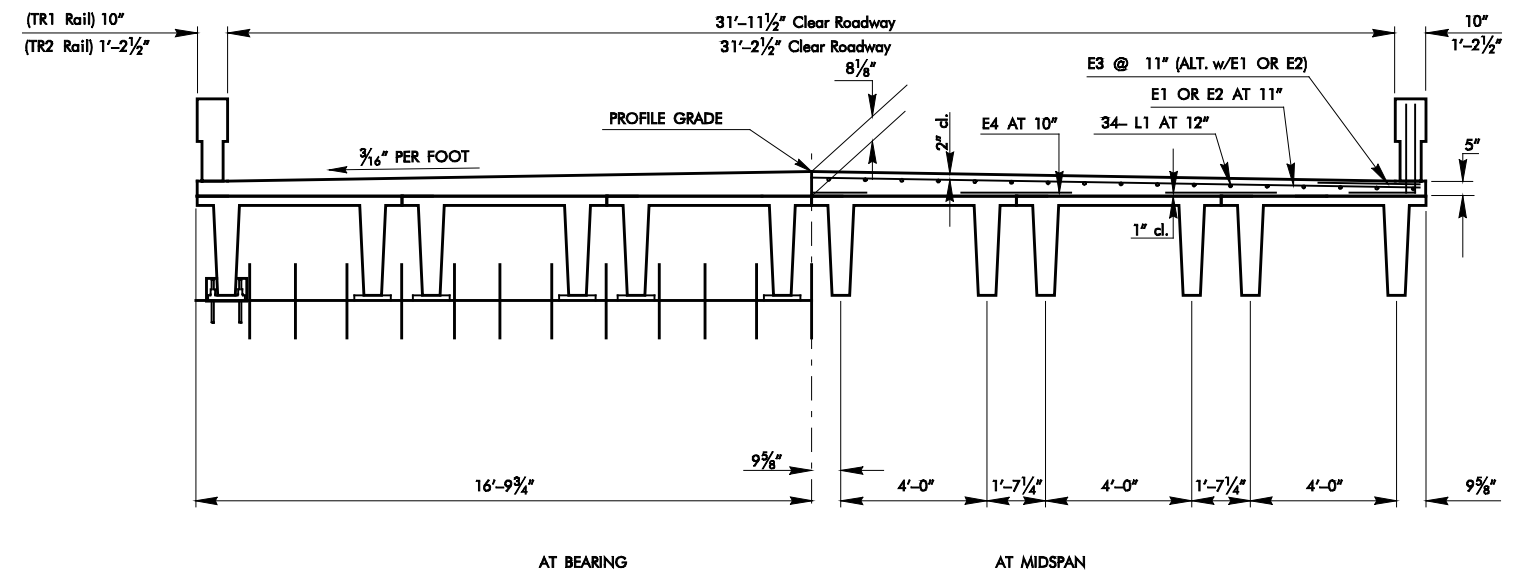
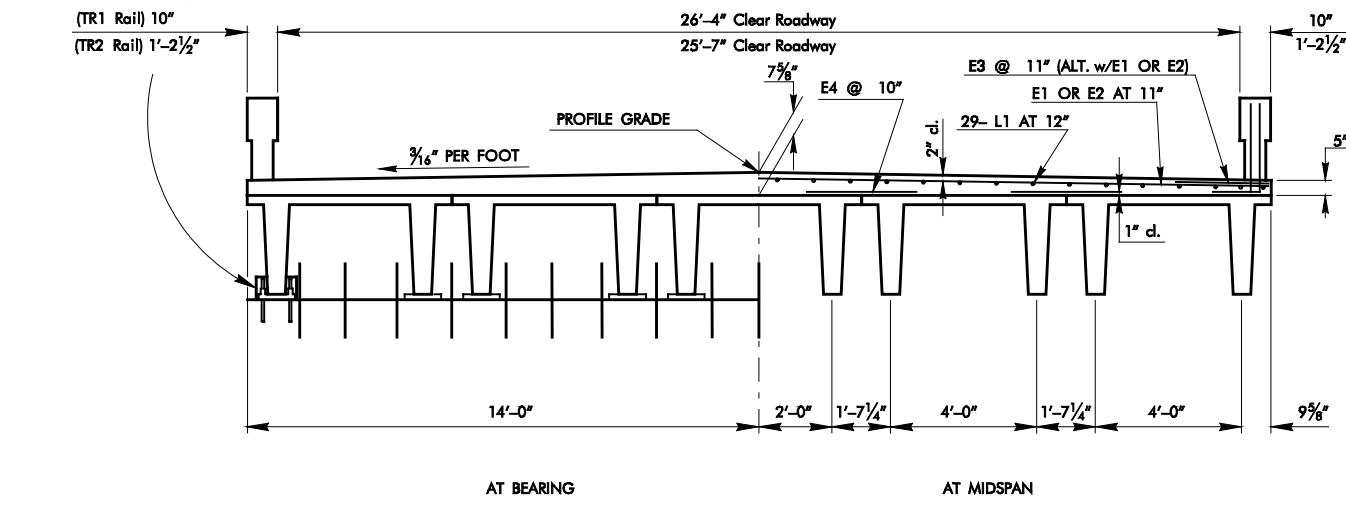


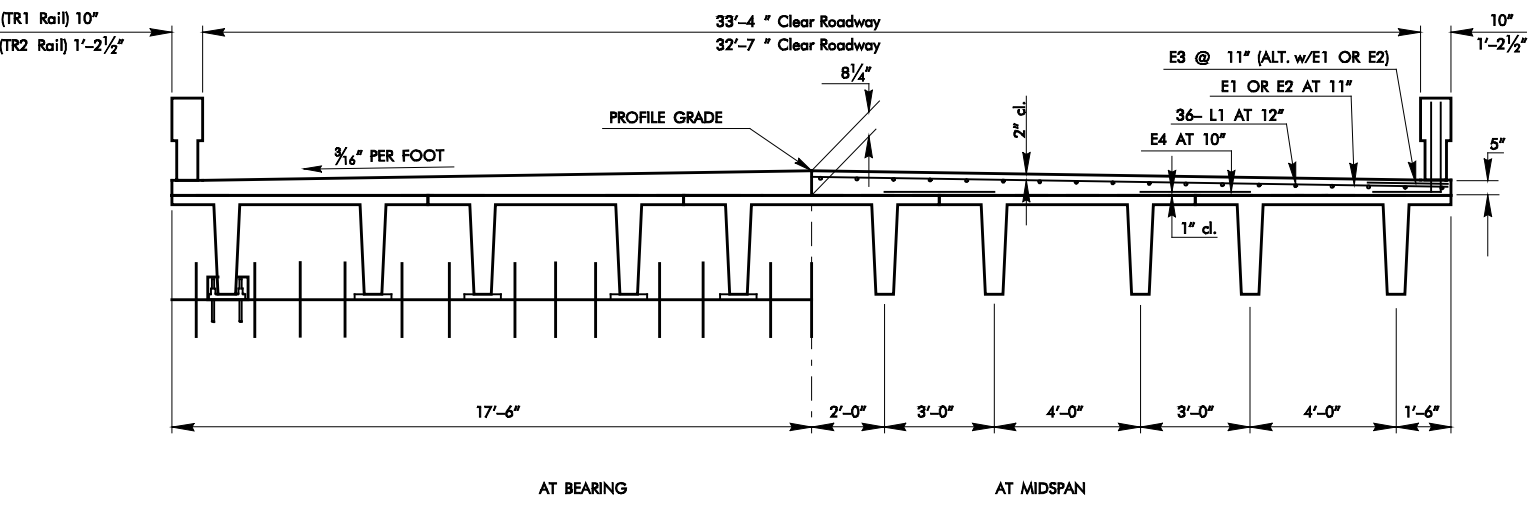
28'-0" SLAB WIDTH
TYPE A, B, OR C



33'-7 1/2" SLAB WIDTH
TYPE D OR E

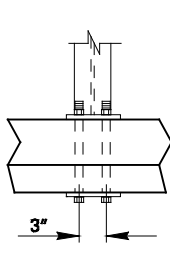


28'-0" SLAB WIDTH
TYPE D OR E

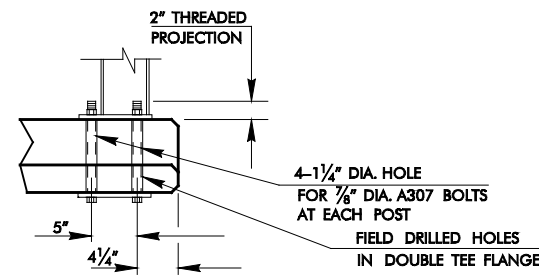


35'-0" SLAB WIDTH
TYPE A, B, OR C

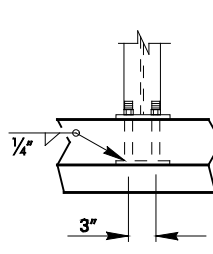
TYPICAL ROADWAY SECTIONS



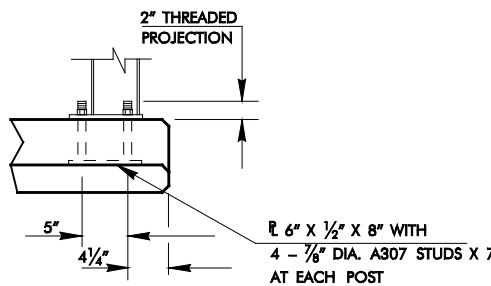
AT TYPE A, B, OR C DOUBLE TEE



TYPICAL BASE DETAIL FOR TUBULAR METAL TRAFFIC RAIL



AT TYPE D OR E DOUBLE TEE



NOTE:
FOR ADDITIONAL DETAILS OF CONCRETE TRAFFIC RAIL SEE STD. TR1-2. FOR DETAILS OF TUBULAR METAL TRAFFIC RAIL, SEE STD. TR2-2.

DESIGN DATA
CONCRETE - f_c 4,000 P.S.I. (MIN. 28 DAYS COMPR. STRENGTH)
REINFORCING STEEL (GR. 60) - f_y 60,000 P.S.I.
LOADING HS 20+20 P.S.F. FUTURE WEARING SURFACE

APPROVED BY BRIDGE ENGINEER: DATE:

OKLAHOMA DEPT. OF TRANSPORTATION
COUNTY BRIDGE STANDARD (ENGLISH)
DOUBLE TEE BRIDGE SECTIONS