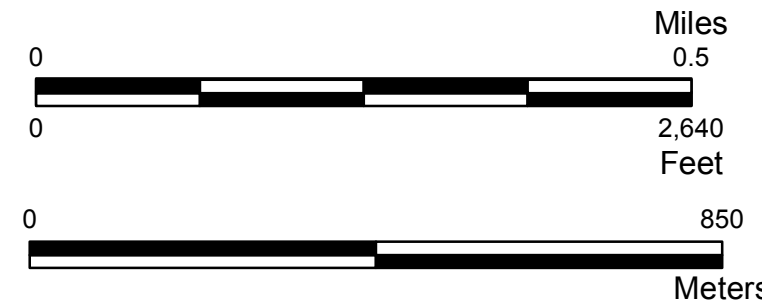
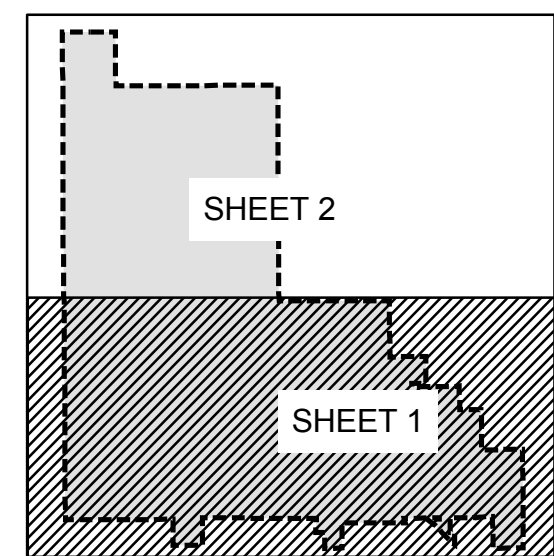
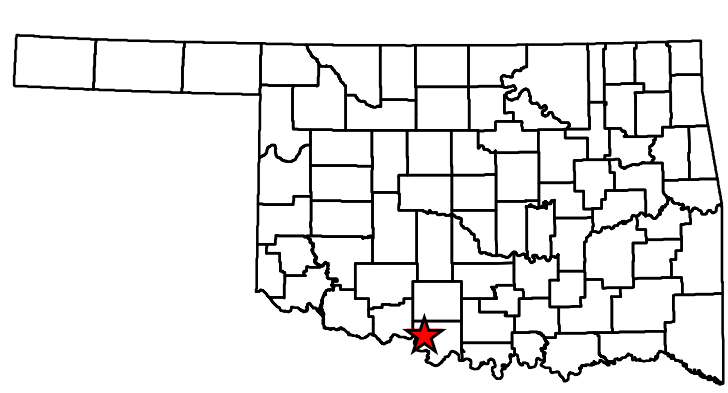


Copies of this map are available for public use at nominal cost.
 Address:
 OKLAHOMA DEPARTMENT OF TRANSPORTATION
 PRINTING SERVICES Phone (405) 521-2586
 200 N.E. 21st STREET
 OKLAHOMA CITY, OKLAHOMA 73105-3204

This map indicates those roads known to the Department to be open to public travel. Placement of a road on the map has no relationship to maintenance responsibility by any level of government.



**STATE OF OKLAHOMA
DEPARTMENT OF TRANSPORTATION**

**CITY OF
WAURIKA
JEFFERSON COUNTY**

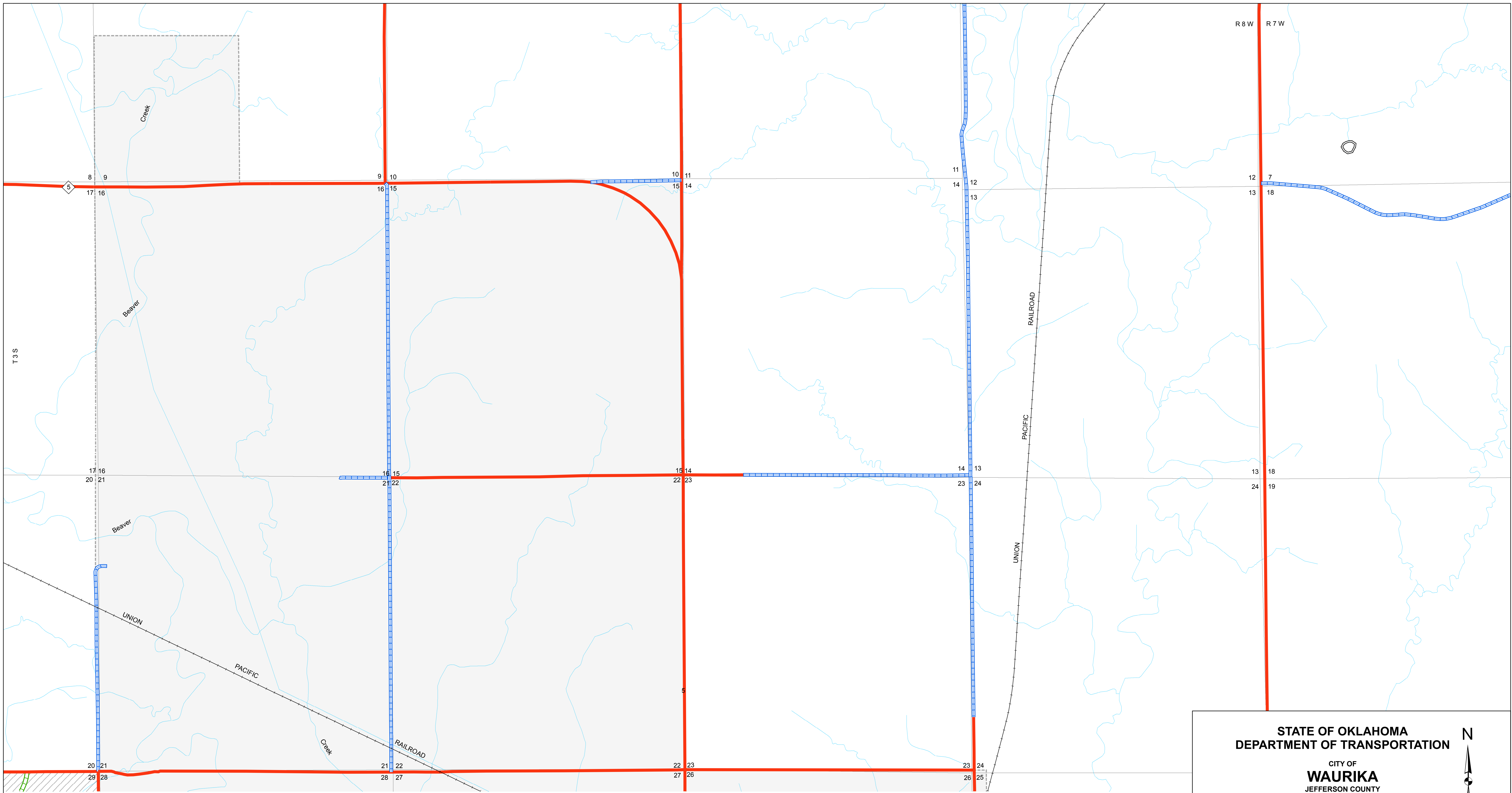
CENSUS YEAR 2010
POPULATION 2,064

N
↑

Legend

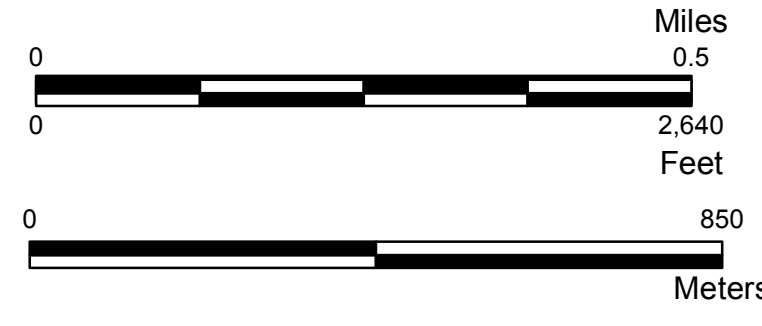
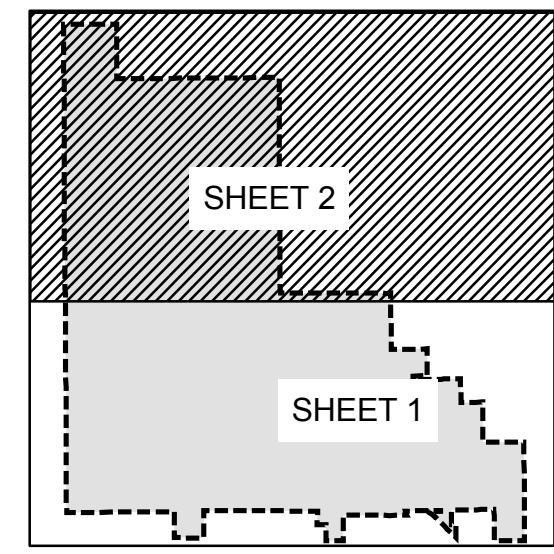
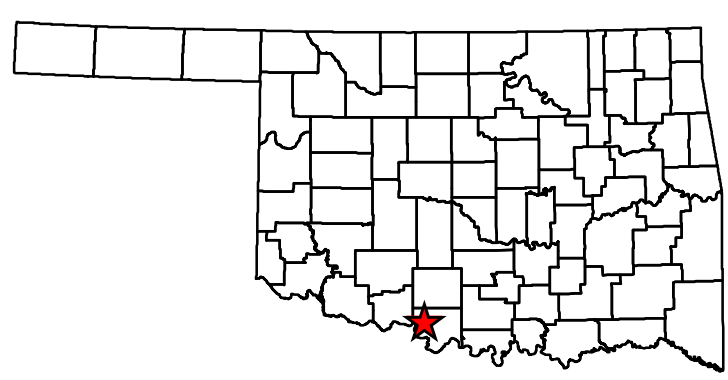
◇ State Highway	Road Surface Type Asphalt	County Line
⬢ U.S. Highway	Concrete	Section Line
⬢ Interstate	Gravel	Wildlife Management Area
Divided Highway, 4 or more lanes	Grade & Drain	Wildlife Refuge
Asphalt	Unimproved	River or Stream
Concrete	Railroad	Lake or Reservoir
	Corporate Limit	
	Waurika	

ALL RIGHTS RESERVED COMPUTER GENERATED September 2018
 WAURIKA, JEFFERSON COUNTY



Copies of this map are available for public use at nominal cost.
 Address:
 OKLAHOMA DEPARTMENT OF TRANSPORTATION
 PRINTING SERVICES Phone (405) 521-2586
 200 N.E. 21st STREET
 OKLAHOMA CITY, OKLAHOMA 73105-3204

This map indicates those roads known to the Department to be open to public travel. Placement of a road on the map has no relationship to maintenance responsibility by any level of government.



**STATE OF OKLAHOMA
DEPARTMENT OF TRANSPORTATION**

**CITY OF
WAURIKA
JEFFERSON COUNTY**

CENSUS YEAR 2010
POPULATION 2,064

N

Legend

<ul style="list-style-type: none"> State Highway U.S. Highway Interstate Divided Highway, 4 or more lanes Asphalt Concrete 	<p>Road Surface Type</p> <ul style="list-style-type: none"> Asphalt Concrete Gravel Grade & Drain Unimproved Railroad Corporate Limit Waurika 	<ul style="list-style-type: none"> County Line Section Line Wildlife Management Area Wildlife Refuge River or Stream Lake or Reservoir
----------------------------------------------------------------------------------------------------------------------------------------------------------------------------------------------	------------------------------------------------------------------------------------------------------------------------------------------------------------------------------------------------------------------------------------------------	----------------------------------------------------------------------------------------------------------------------------------------------------------------------------------------------------------

ALL RIGHTS RESERVED COMPUTER GENERATED September 2018

WAURIKA, JEFFERSON COUNTY