

R 3 E

TO  
ARKANSAS CITY,  
KANSAS

B.N.S.F. RAILROAD

77

EARTH RD.

PECKHAM RD.

DRY RD.

T 28 N

Spring

COUNTY SHED RD.

SOUTHRIDGE

77

PLUM AVE.

PEACH AVE.

ACADEMY ST.

OAKWOOD LN.

15th ST.

11th ST.

10th ST.

9th ST.

8th ST.

7th ST.

6th ST.

5th ST.

4th ST.

3rd ST.

2nd AVE.

1st AVE.

MAGNOLIA AVE.

WALNUT ST.

MAPLE ST.

MAIN AVE.

ELM ST.

12th ST.

11th ST.

10th ST.

9th ST.

8th ST.

7th ST.

6th ST.

5th ST.

4th ST.

3rd ST.

2nd AVE.

1st AVE.

ST.

ST.

ST.

ST.

ST.

ST.

ST.

ST.

ST.

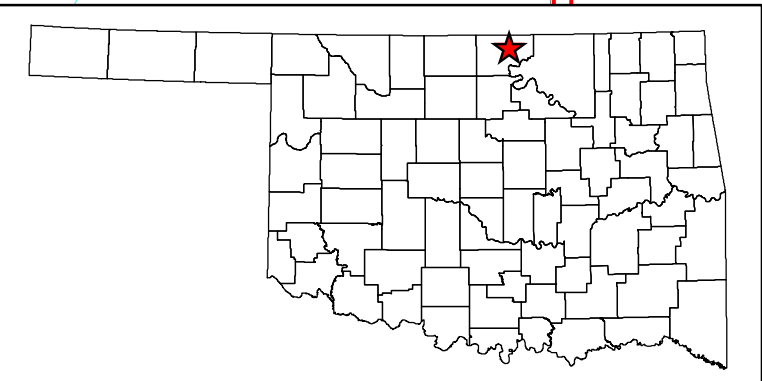
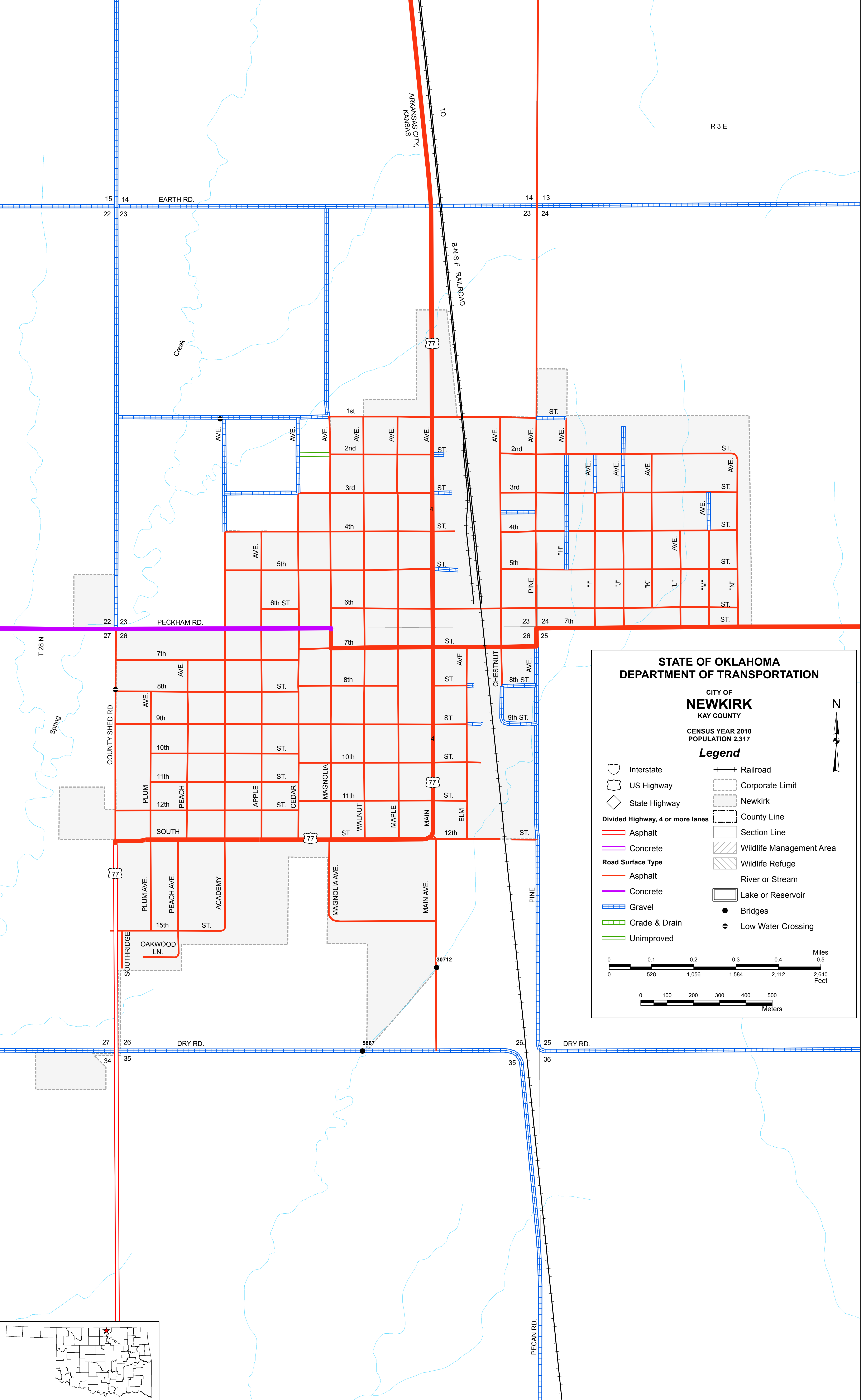
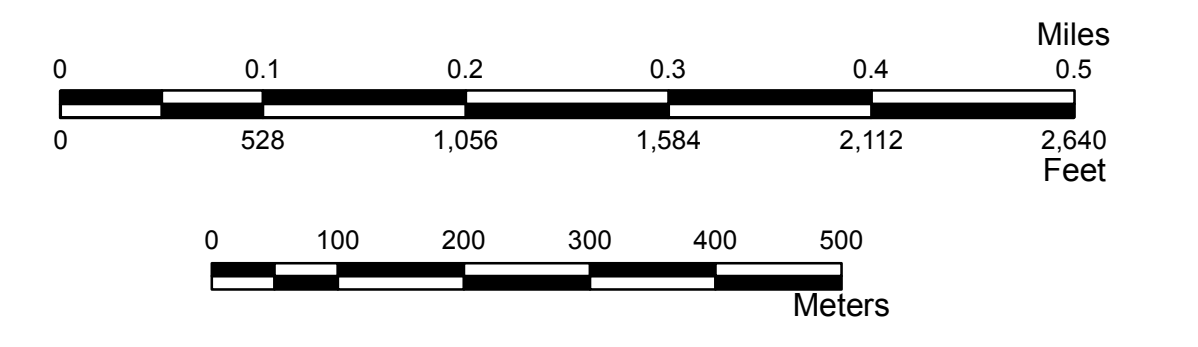
### STATE OF OKLAHOMA DEPARTMENT OF TRANSPORTATION

#### CITY OF NEWKIRK KAY COUNTY

CENSUS YEAR 2010  
POPULATION 2,317

#### Legend

- Interstate
- US Highway
- State Highway
- Divided Highway, 4 or more lanes
- Asphalt
- Concrete
- Gravel
- Grade & Drain
- Unimproved
- Railroad
- Corporate Limit
- Newkirk
- County Line
- Section Line
- Wildlife Management Area
- Wildlife Refuge
- River or Stream
- Lake or Reservoir
- Bridges
- Low Water Crossing



Copies of this map are available for public use at nominal cost.  
OKLAHOMA DEPARTMENT OF TRANSPORTATION  
PRINTING SERVICES Phone (405) 521-2596  
200 N.E. 21st STREET  
OKLAHOMA CITY, OKLAHOMA 73105-3204

This map indicates those roads known to the Department to be open to public travel. Placement of a road on the map has no relationship to maintenance responsibility by any level of government.

© COPYRIGHT 2018  
PRINTED AT STATE EXPENSE

NOT FOR RESALE

ALL RIGHTS RESERVED  
COMPUTER GENERATED  
NEWKIRK, KAY COUNTY  
September 2018