

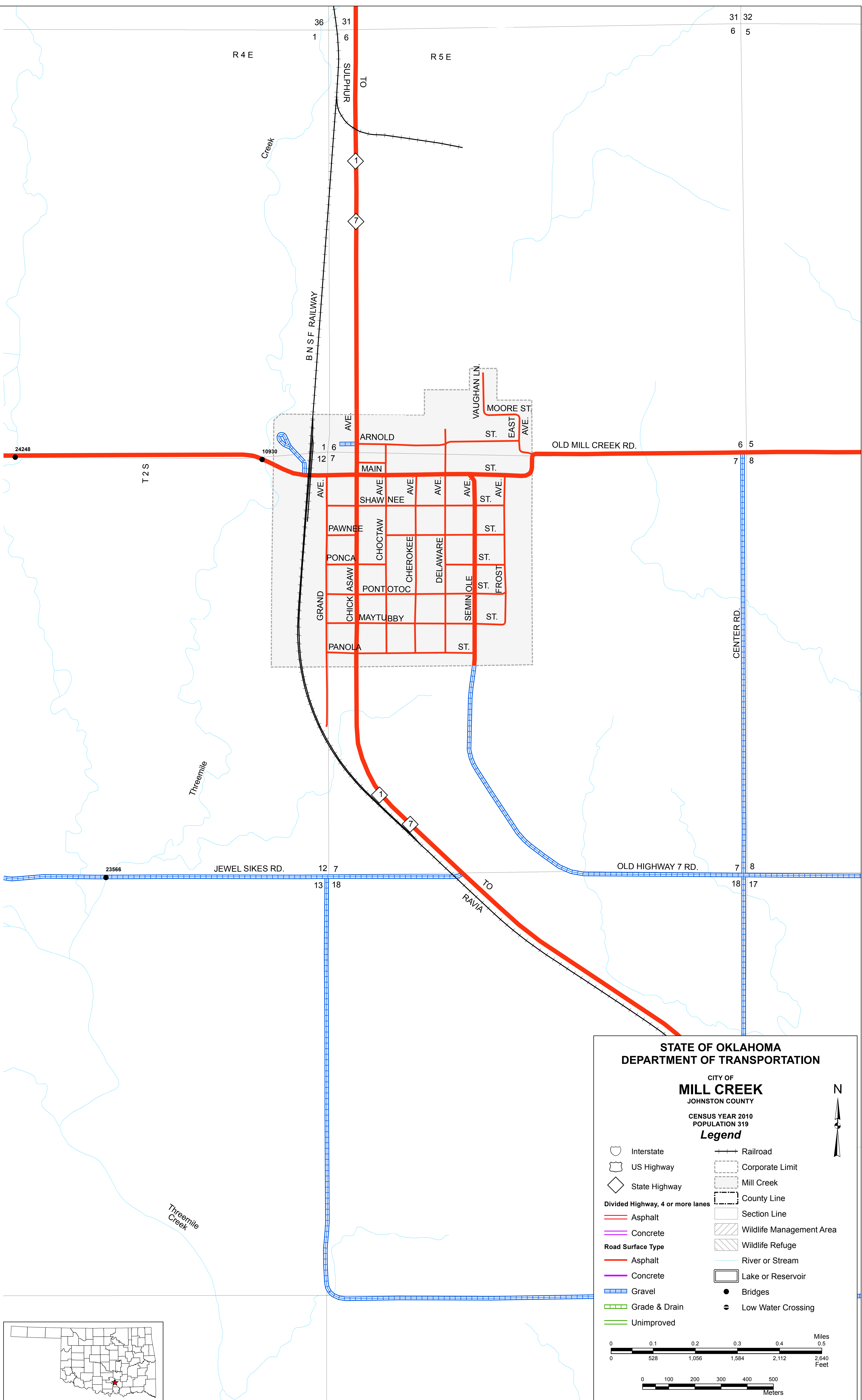
Copies of this map are available for public use at nominal cost.  
 OKLAHOMA DEPARTMENT OF TRANSPORTATION  
 PRINTING SERVICES Phone (405) 521-2596  
 200 N.E. 21st STREET  
 OKLAHOMA CITY, OKLAHOMA 73105-3204

This map indicates those roads known to the Department to be open to public travel. Placement of a road on the map has no relationship to maintenance responsibility by any level of government.

© COPYRIGHT 2018  
 PRINTED AT STATE EXPENSE

NOT FOR RESALE

ALL RIGHTS RESERVED  
 COMPUTER GENERATED  
 MILL CREEK, JOHNSTON COUNTY  
 September 2018



**STATE OF OKLAHOMA**  
**DEPARTMENT OF TRANSPORTATION**

CITY OF  
**MILL CREEK**  
 JOHNSTON COUNTY

CENSUS YEAR 2010  
 POPULATION 319

**Legend**

	Interstate		Railroad
	US Highway		Corporate Limit
	State Highway		Mill Creek
	Divided Highway, 4 or more lanes		County Line
	Asphalt		Section Line
	Concrete		Wildlife Management Area
	Gravel		Wildlife Refuge
	Grade & Drain		River or Stream
	Unimproved		Lake or Reservoir
			Bridges
			Low Water Crossing

Miles: 0, 0.1, 0.2, 0.3, 0.4, 0.5  
 Feet: 0, 528, 1,056, 1,584, 2,112, 2,640

Meters: 0, 100, 200, 300, 400, 500

