

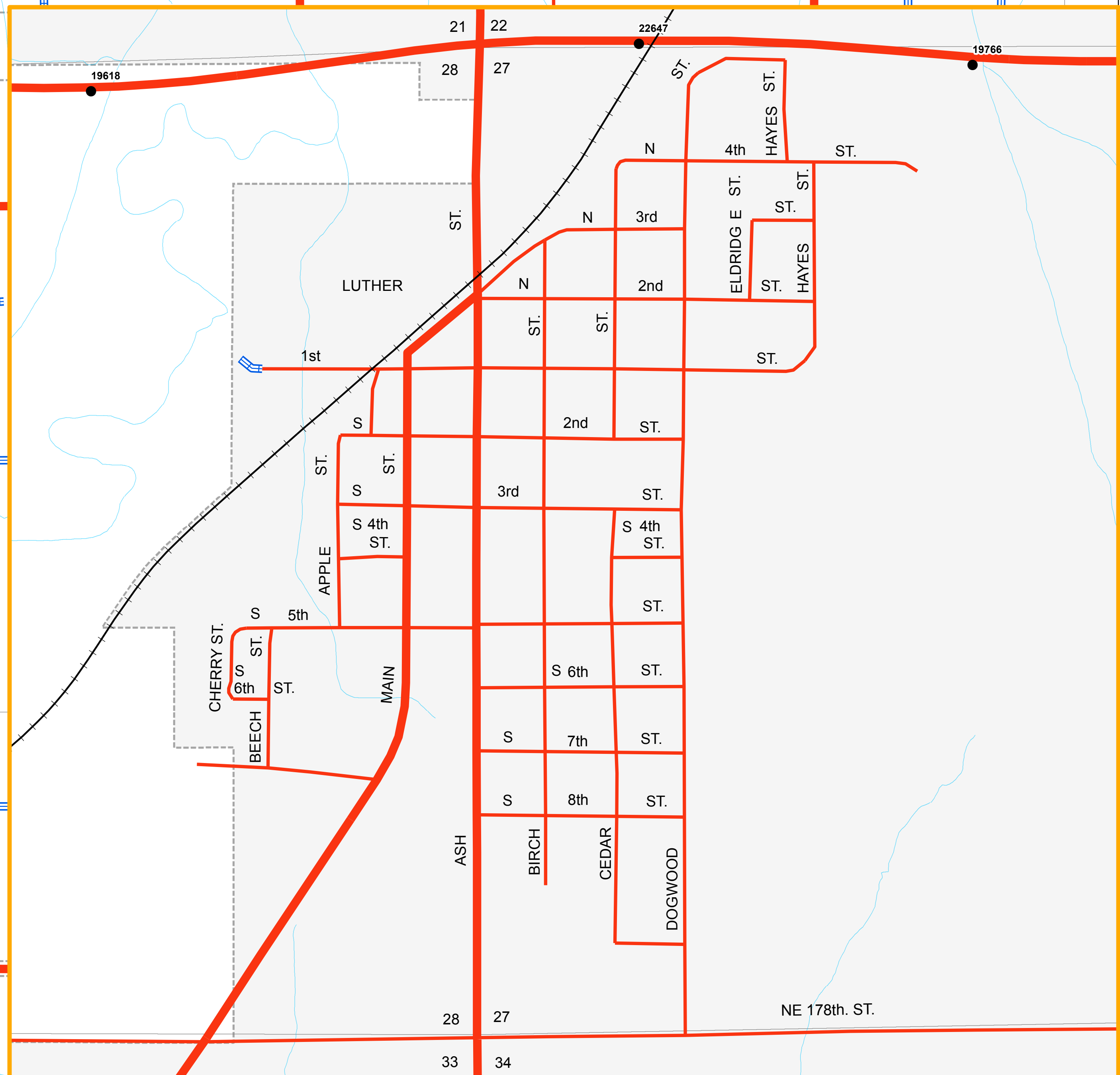
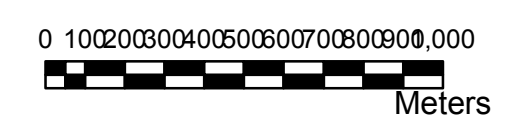
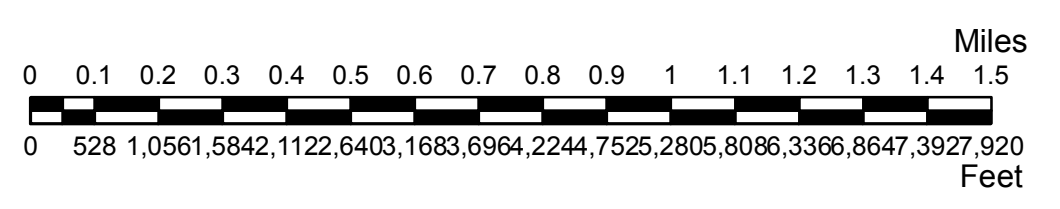
STATE OF OKLAHOMA  
DEPARTMENT OF TRANSPORTATION

CITY OF  
**LUTHER**  
OKLAHOMA COUNTY

CENSUS YEAR 2010  
POPULATION 1,221

**Legend**

- Interstate
- US Highway
- State Highway
- Divided Highway, 4 or more lanes
- Asphalt
- Concrete
- Gravel
- Grade & Drain
- Unimproved
- Railroad
- Corporate Limit
- Luther
- County Line
- Section Line
- Wildlife Management Area
- Wildlife Refuge
- River or Stream
- Lake or Reservoir
- Bridges
- Low Water Crossing



Copies of this map are available for public use at nominal cost.

OKLAHOMA DEPARTMENT OF TRANSPORTATION  
PRINTING SERVICES Phone (405) 521-2586  
200 N.E. 21st STREET  
OKLAHOMA CITY, OKLAHOMA 73105-3204

This map indicates those roads known to the Department to be open to public travel. Placement of a road on the map has no relationship to maintenance responsibility by any level of government.

LUTHER

© COPYRIGHT 2018  
PRINTED AT STATE EXPENSE

**NOT FOR RESALE**

ALL RIGHTS RESERVED

COMPUTER GENERATED  
LUTHER, OKLAHOMA COUNTY  
September 2018