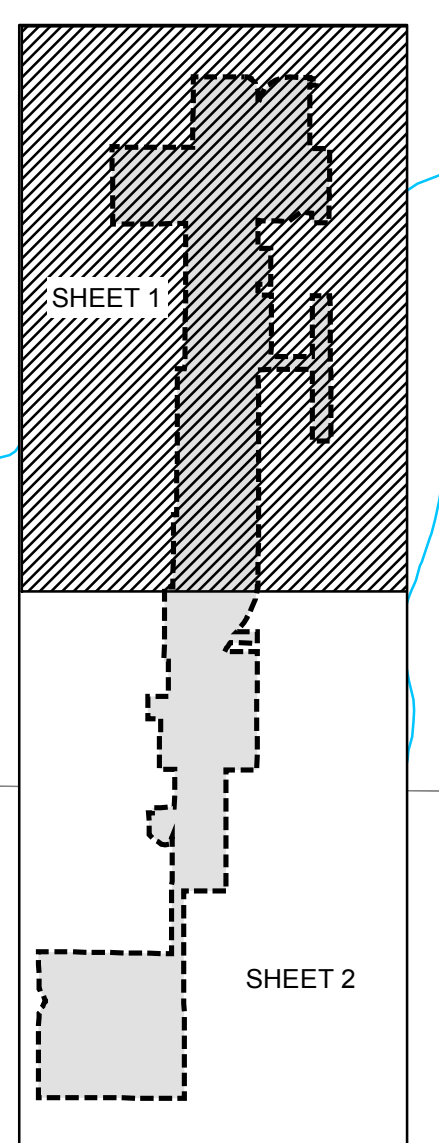
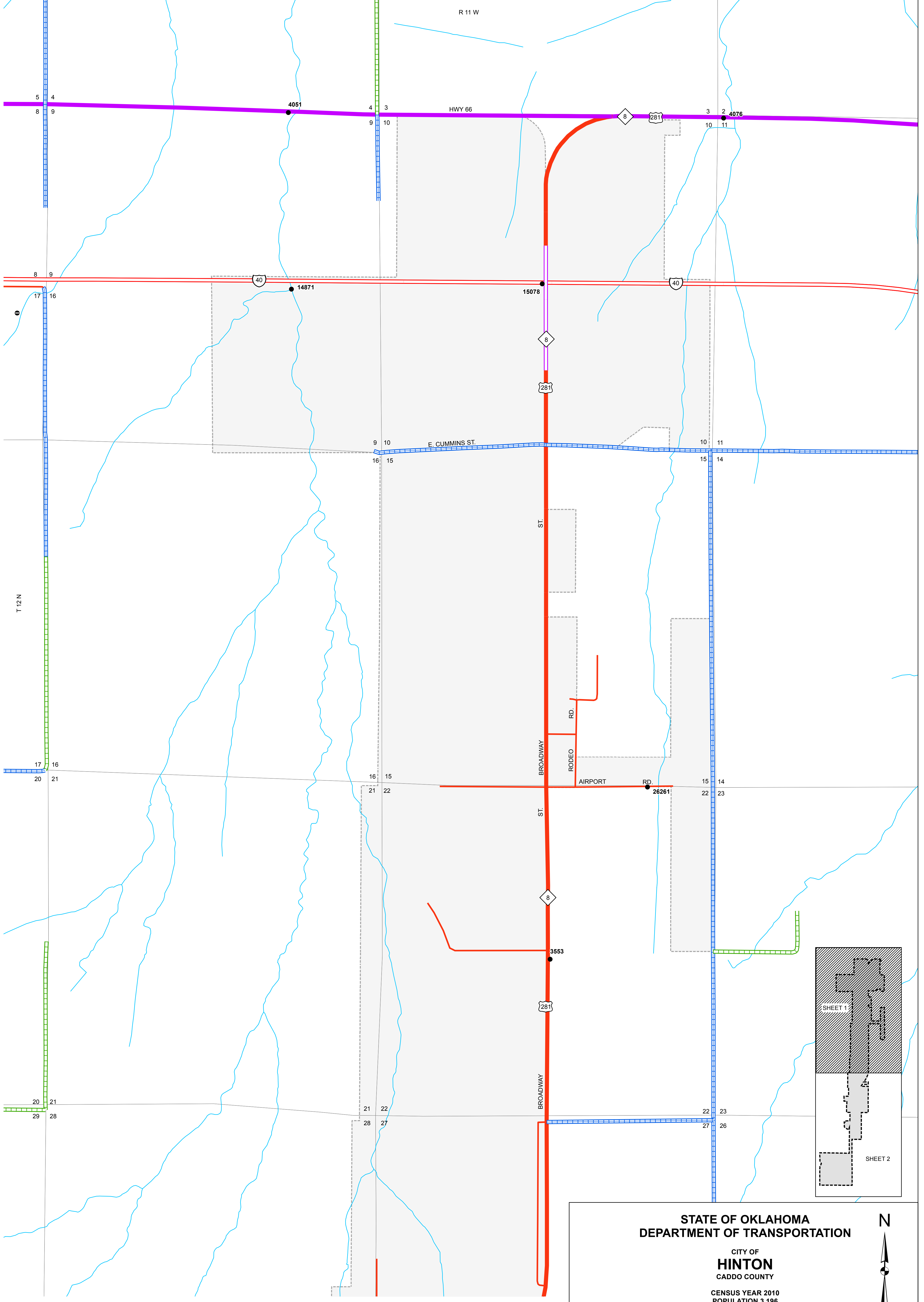


Copies of this map are available for public use at nominal cost.
Address:
OKLAHOMA DEPARTMENT OF TRANSPORTATION
PRINTING SERVICES Phone (405) 521-2586
200 N.E. 21st STREET
OKLAHOMA CITY, OKLAHOMA 73105-3204

This map indicates those roads known to the Department to be open to public travel. Placement of a road on the map has no relationship to maintenance responsibility by any level of government.



STATE OF OKLAHOMA
DEPARTMENT OF TRANSPORTATION

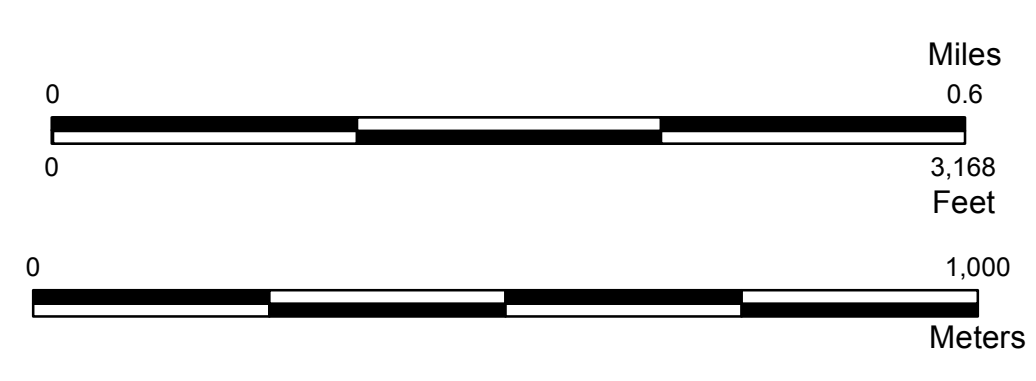
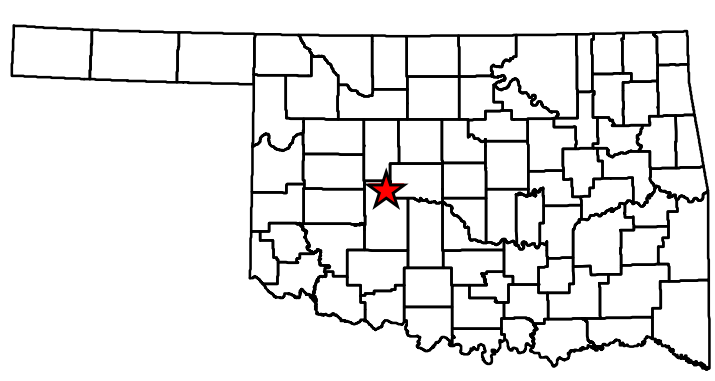
CITY OF
HINTON
CADDO COUNTY

CENSUS YEAR 2010
POPULATION 3,196



Legend

- | | | |
|---|--------------------------|--------------------------|
| State Highway | Road Surface Type | County Line |
| U.S. Highway | Asphalt | Section Line |
| Interstate | Concrete | Wildlife Management Area |
| Divided Highway, 4 or more lanes | Gravel | Wildlife Refuge |
| Asphalt | Grade & Drain | River or Stream |
| Concrete | Unimproved | Lake or Reservoir |
| | Railroad | Bridges |
| | Corporate Limit | Low Water Crossing |
| | Hinton | |



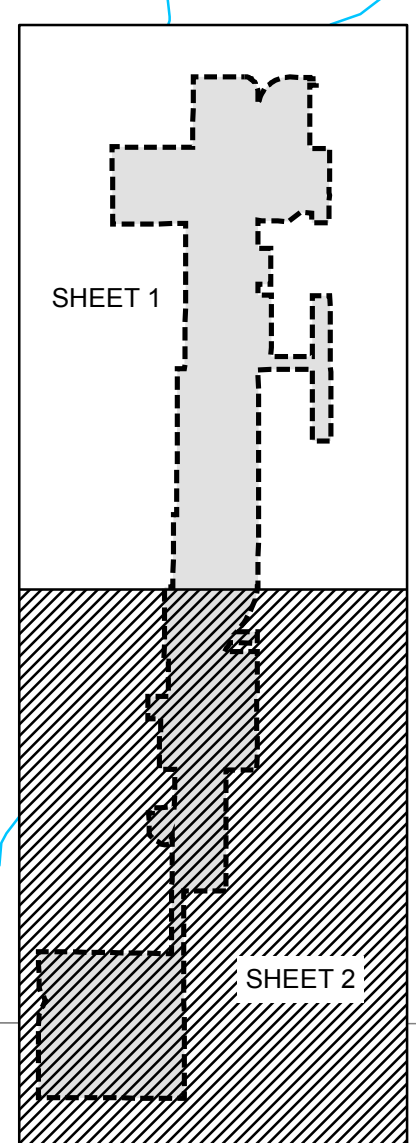
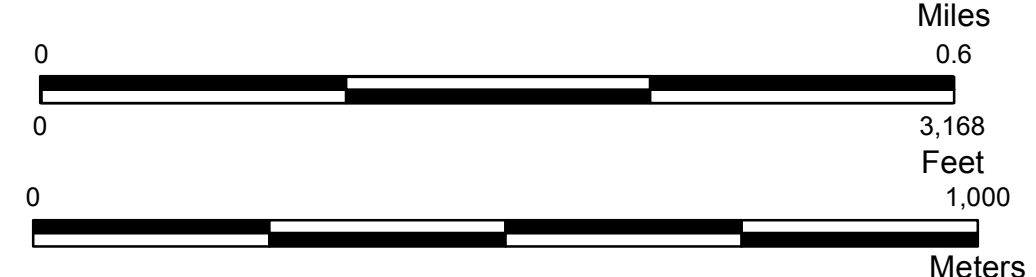
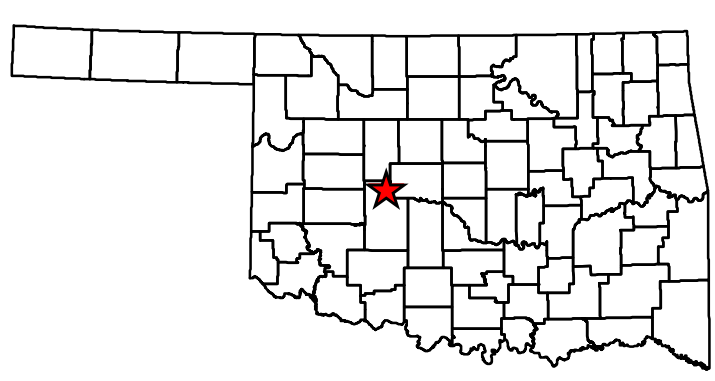
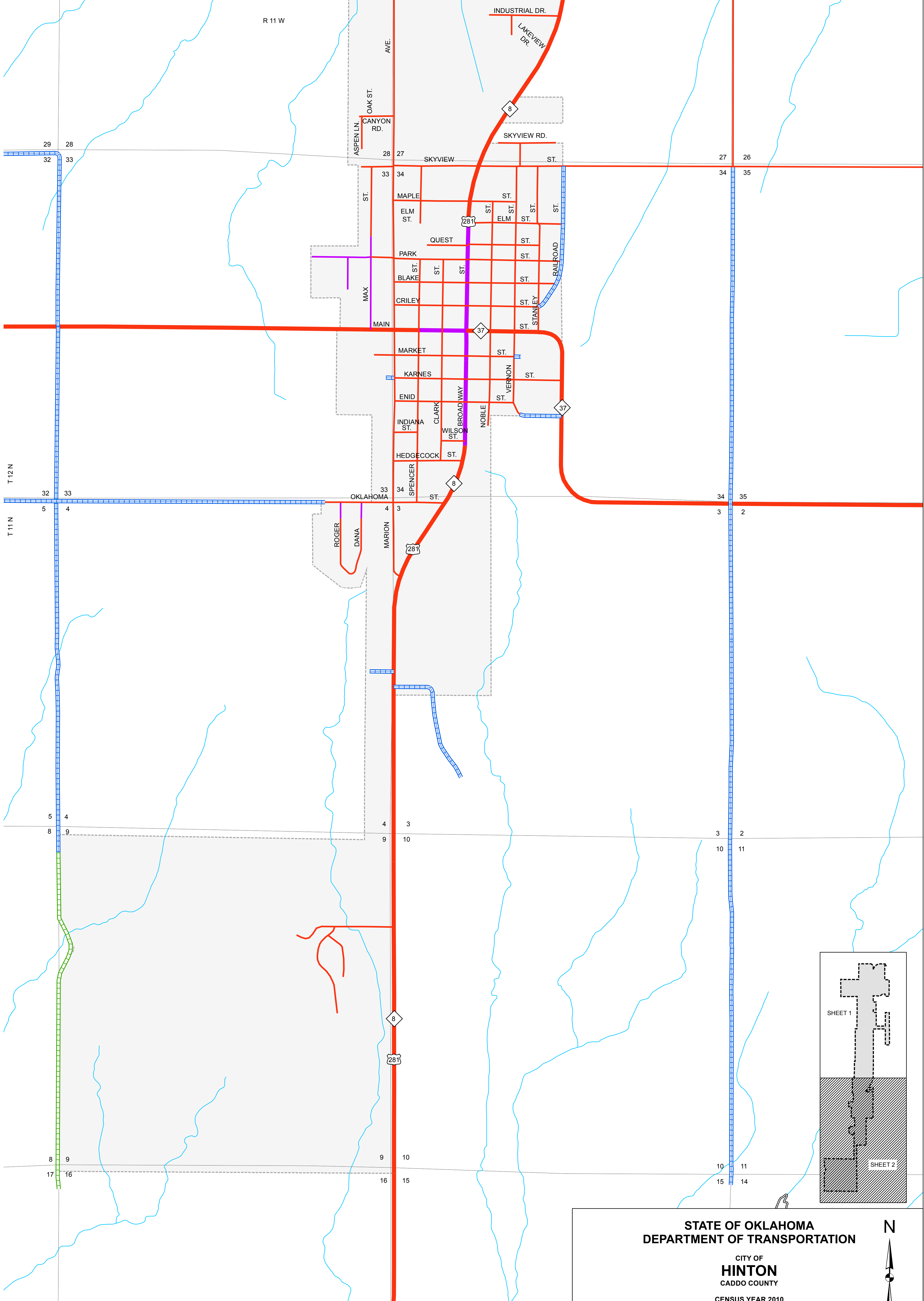
Copies of this map are available for public use at nominal cost.
 Address:
 OKLAHOMA DEPARTMENT OF TRANSPORTATION
 PRINTING SERVICES Phone (405) 521-2586
 200 N.E. 21st STREET
 OKLAHOMA CITY, OKLAHOMA 73105-3204

This map indicates those roads known to the Department to be open to public travel. Placement of a road on the map has no relationship to maintenance responsibility by any level of government.

© COPYRIGHT 2018
 PRINTED AT STATE EXPENSE

NOT FOR RESALE

ALL RIGHTS RESERVED
 COMPUTER GENERATED
 HINTON, CADDO COUNTY
 September 2018



**STATE OF OKLAHOMA
 DEPARTMENT OF TRANSPORTATION**

CITY OF
HINTON
 CADDO COUNTY

CENSUS YEAR 2010
 POPULATION 3,196

N

Legend

| | | |
|----------------------------------|-----------------|--------------------------|
| State Highway | Asphalt | County Line |
| U.S. Highway | Concrete | Section Line |
| Interstate | Gravel | Wildlife Management Area |
| Divided Highway, 4 or more lanes | Grade & Drain | Wildlife Refuge |
| Asphalt | Unimproved | River or Stream |
| Concrete | Railroad | Lake or Reservoir |
| | Corporate Limit | Bridges |
| | Hinton | Low Water Crossing |