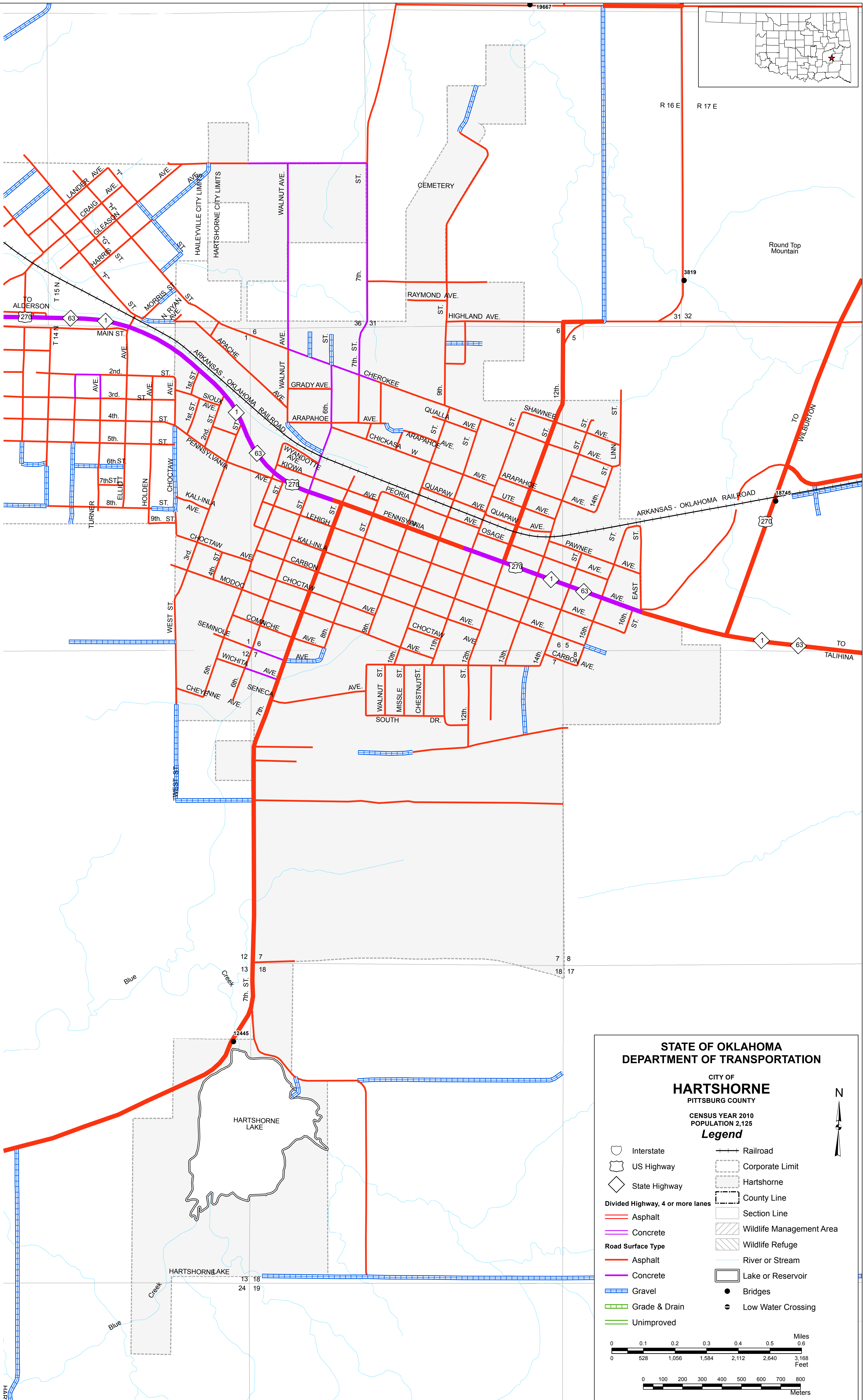


R 16 E R 17 E

Round Top Mountain



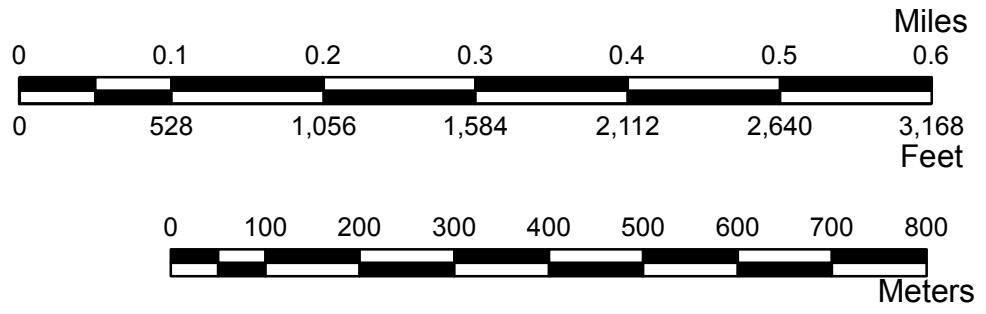
STATE OF OKLAHOMA DEPARTMENT OF TRANSPORTATION

CITY OF HARTSHORNE PITTSBURG COUNTY

CENSUS YEAR 2010 POPULATION 2,125

Legend

- Interstate
- US Highway
- State Highway
- Divided Highway, 4 or more lanes
- Asphalt
- Concrete
- Road Surface Type
- Asphalt
- Concrete
- Gravel
- Grade & Drain
- Unimproved
- Railroad
- Corporate Limit
- Hartshorne
- County Line
- Section Line
- Wildlife Management Area
- Wildlife Refuge
- River or Stream
- Lake or Reservoir
- Bridges
- Low Water Crossing



Copies of this map are available for public use at nominal cost.

OKLAHOMA DEPARTMENT OF TRANSPORTATION
 PRINTING SERVICES Phone (405) 521-2566
 200 N.E. 21st STREET
 OKLAHOMA CITY, OKLAHOMA 73105-3204

This map indicates those roads known to the Department to be open to public travel. Placement of a road on the map has no relationship to maintenance responsibility by any level of government.

© COPYRIGHT 2018
 PRINTED AT STATE EXPENSE

NOT FOR RESALE

ALL RIGHTS RESERVED. COMPUTER GENERATED. September, 2018
 HARTSHORNE, PITTSBURG COUNTY