

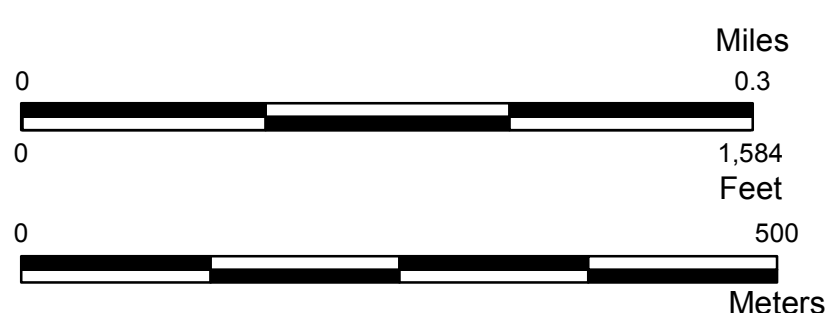
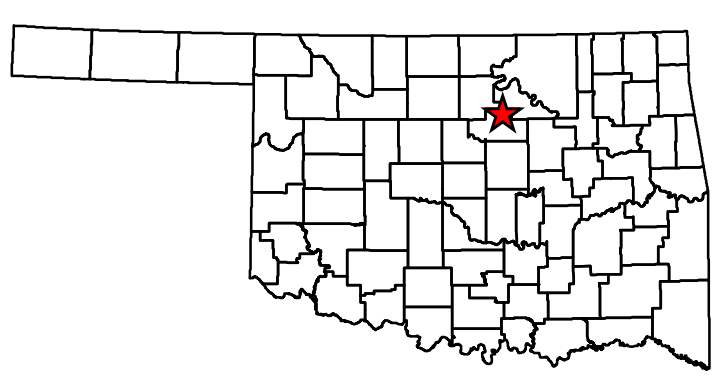
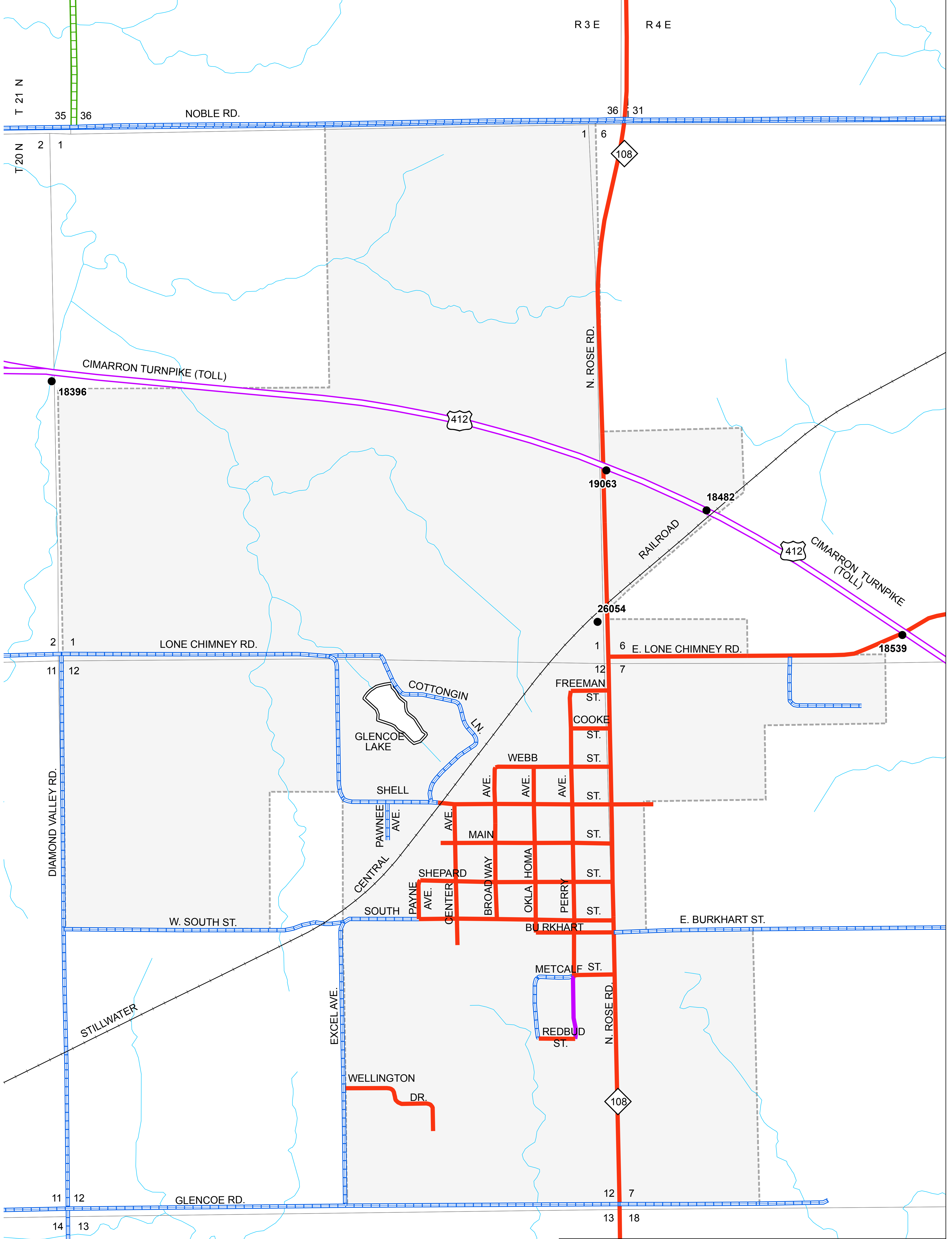
Copies of this map are available for public use at nominal cost.
 Address:
 OKLAHOMA DEPARTMENT OF TRANSPORTATION
 PRINTING SERVICES Phone (405) 521-2586
 200 N.E. 21st STREET
 OKLAHOMA CITY, OKLAHOMA 73105-3204
 GLENCOE

This map indicates those roads known to the Department to be open to public travel. Placement of a road on the map has no relationship to maintenance responsibility by any level of government.

© COPYRIGHT 2018
 PRINTED AT STATE EXPENSE

NOT FOR RESALE

ALL RIGHTS RESERVED
 COMPUTER GENERATED
 PAYNE, GLENCOE COUNTY
 September 2018



STATE OF OKLAHOMA
 DEPARTMENT OF TRANSPORTATION

CITY OF
GLENCOE
 PAYNE COUNTY

CENSUS YEAR 2010
 POPULATION 601

Legend

- | | | |
|---|----------------------------|--------------------------|
| State Highway | Road Surface Type: Asphalt | County Line |
| U.S. Highway | Concrete | State Line |
| Interstate | Gravel | Section Line |
| Divided Highway, 4 or more lanes: Asphalt | Grade & Drain | Wildlife Management Area |
| Concrete | Unimproved | Wildlife Refuge |
| | Railroad | River or Stream |
| | Corporate Limit | Lake or Reservoir |
| | Glencoe | Bridges |
| | | Low Water Crossing |