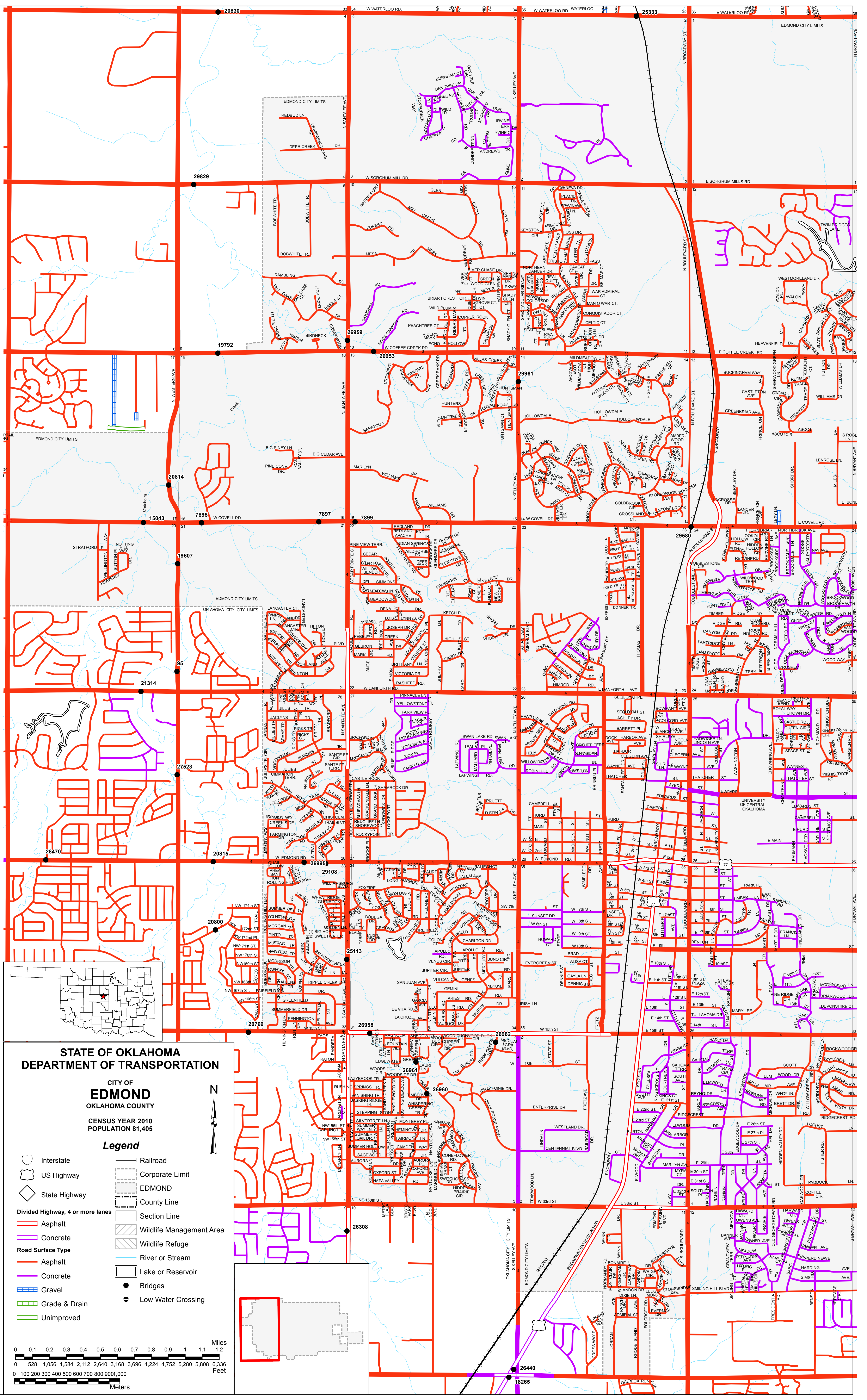


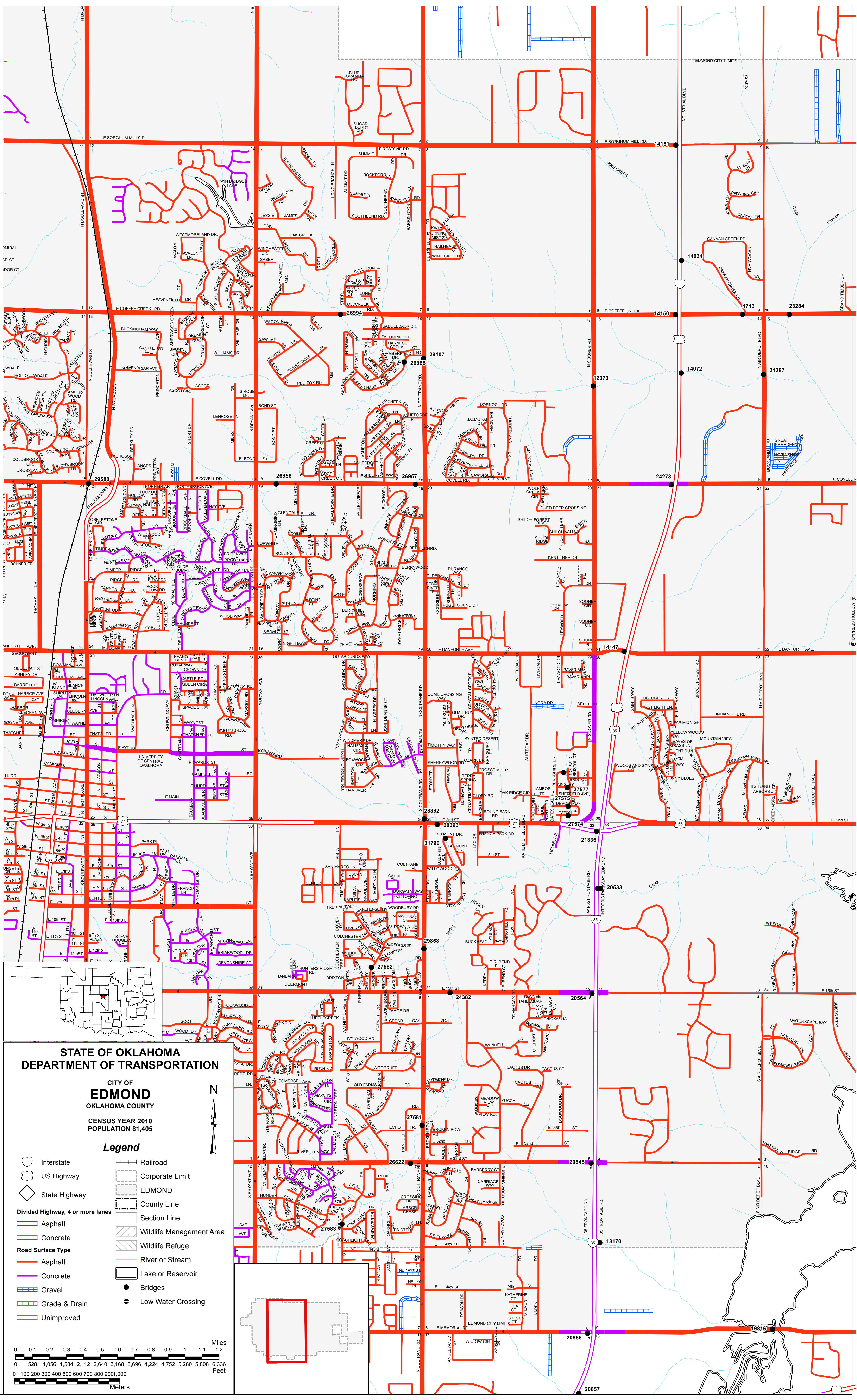
Copies of this map are available for public use at nominal cost.
OKLAHOMA DEPARTMENT OF TRANSPORTATION
PRINTING SERVICES Phone (405) 521-5266
200 N.E. 21st STREET
OKLAHOMA CITY, OKLAHOMA 73105-3204

This map indicates those roads known to the Department to be open to public travel. Placement of a road on the map has no relationship to maintenance responsibility by any level of government.



Copies of this map are available for public use at nominal cost.
OKLAHOMA DEPARTMENT OF TRANSPORTATION
PRINTING SERVICES Phone (405) 521-2586
200 N.E. 21st STREET
OKLAHOMA CITY, OKLAHOMA 73105-3204

This map indicates those roads known to the Department to be open to public travel. Placement of a road on the map has no relationship to maintenance responsibility by any level of government.

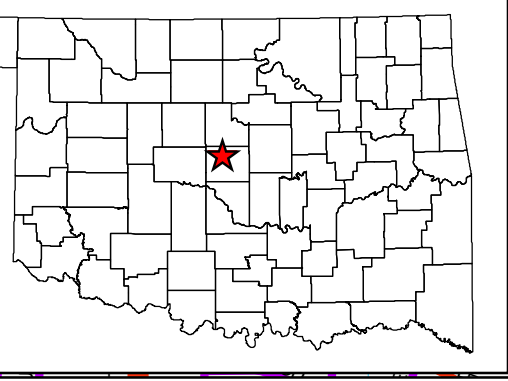
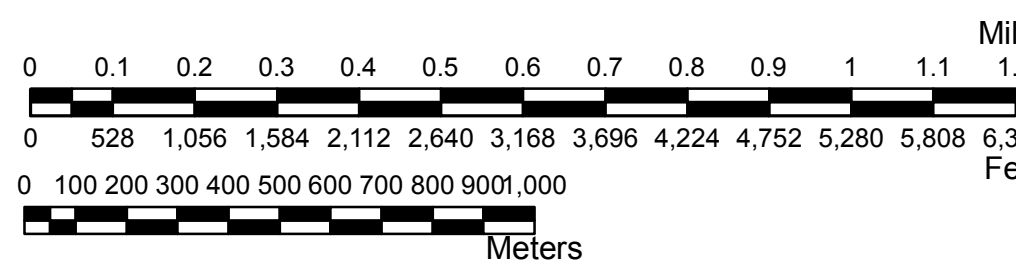


STATE OF OKLAHOMA
DEPARTMENT OF TRANSPORTATION

CITY OF
EDMOND
OKLAHOMA COUNTY
CENSUS YEAR 2010
POPULATION 81,405

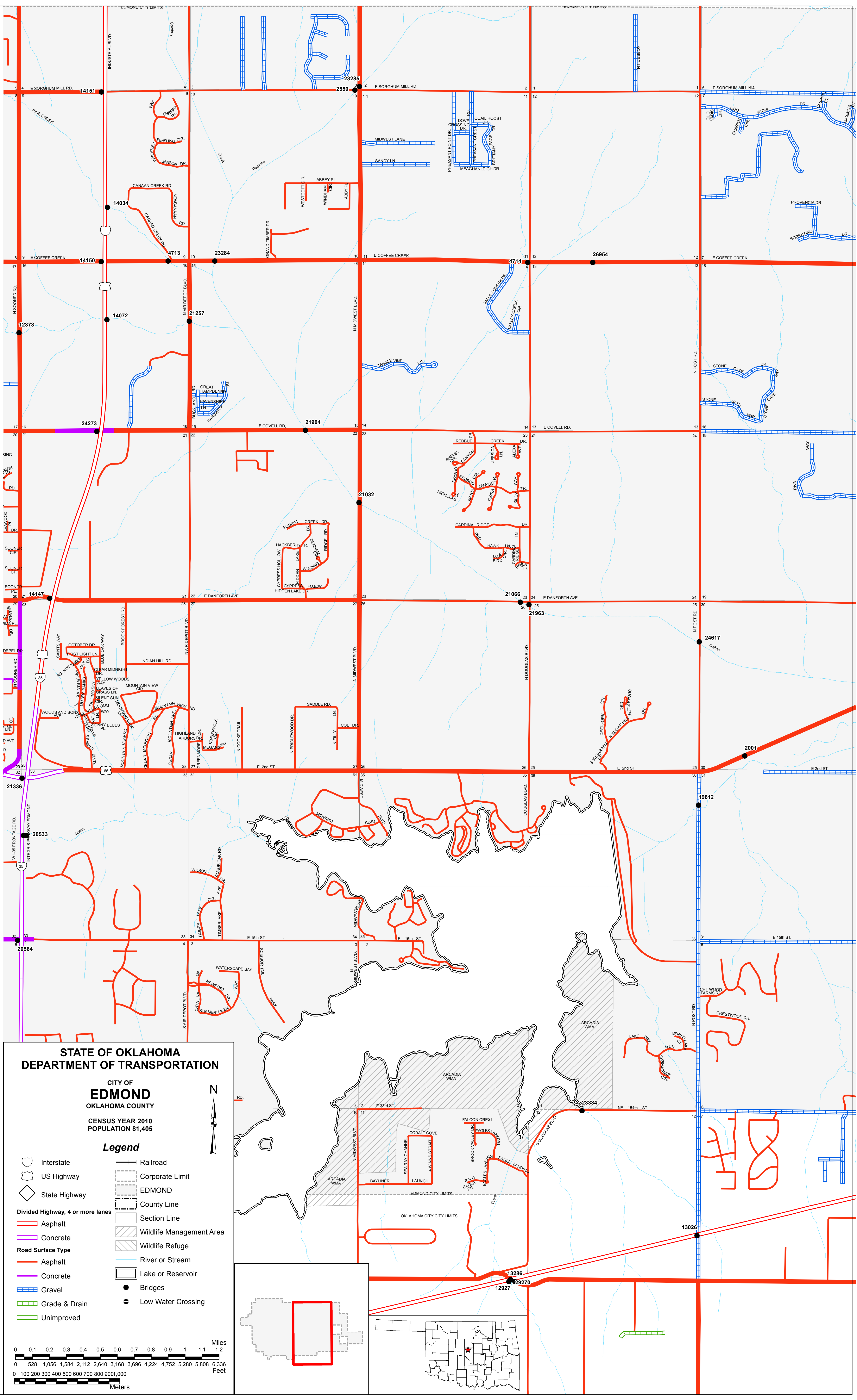
Legend

- Interstate
- US Highway
- State Highway
- Divided Highway, 4 or more lanes
- Asphalt
- Concrete
- Road Surface Type
- Asphalt
- Concrete
- Gravel
- Grade & Drain
- Unimproved
- Railroad
- Corporate Limit
- EDMOND
- County Line
- Section Line
- Wildlife Management Area
- Wildlife Refuge
- River or Stream
- Lake or Reservoir
- Bridges
- Low Water Crossing



Copies of this map are available for public use at nominal cost.
 OKLAHOMA DEPARTMENT OF TRANSPORTATION
 PRINTING SERVICES Phone (405) 521-2586
 200 N.E. 21st STREET
 OKLAHOMA CITY, OKLAHOMA 73105-3204

This map indicates those roads known to the Department to be open to public travel. Placement of a road on the map has no relationship to maintenance responsibility by any level of government.



**STATE OF OKLAHOMA
 DEPARTMENT OF TRANSPORTATION**

**CITY OF EDMOND
 OKLAHOMA COUNTY**

CENSUS YEAR 2010
 POPULATION 81,405

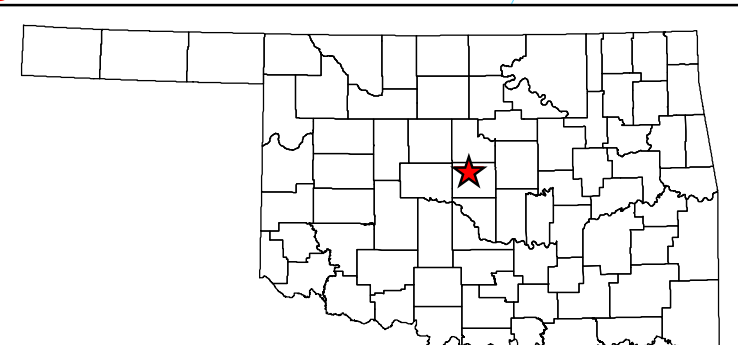
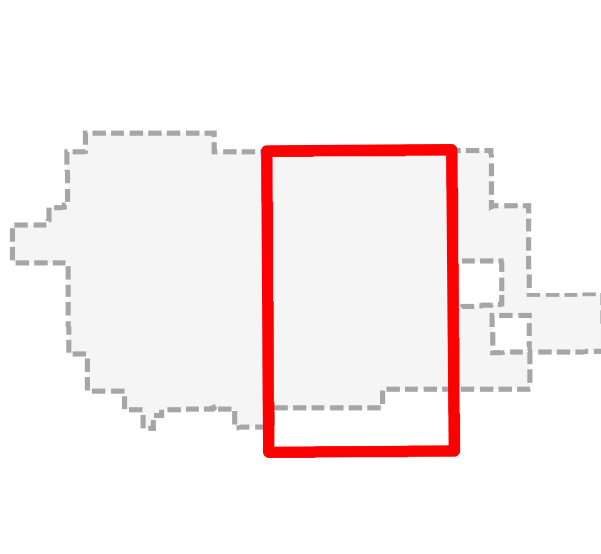
Legend

	Interstate		Railroad
	US Highway		Corporate Limit
	State Highway		EDMOND
	Divided Highway, 4 or more lanes		County Line
	Asphalt		Section Line
	Concrete		Wildlife Management Area
	Gravel		Wildlife Refuge
	Grade & Drain		River or Stream
	Unimproved		Lake or Reservoir
			Bridges
			Low Water Crossing

Miles
 0 0.1 0.2 0.3 0.4 0.5 0.6 0.7 0.8 0.9 1 1.1 1.2

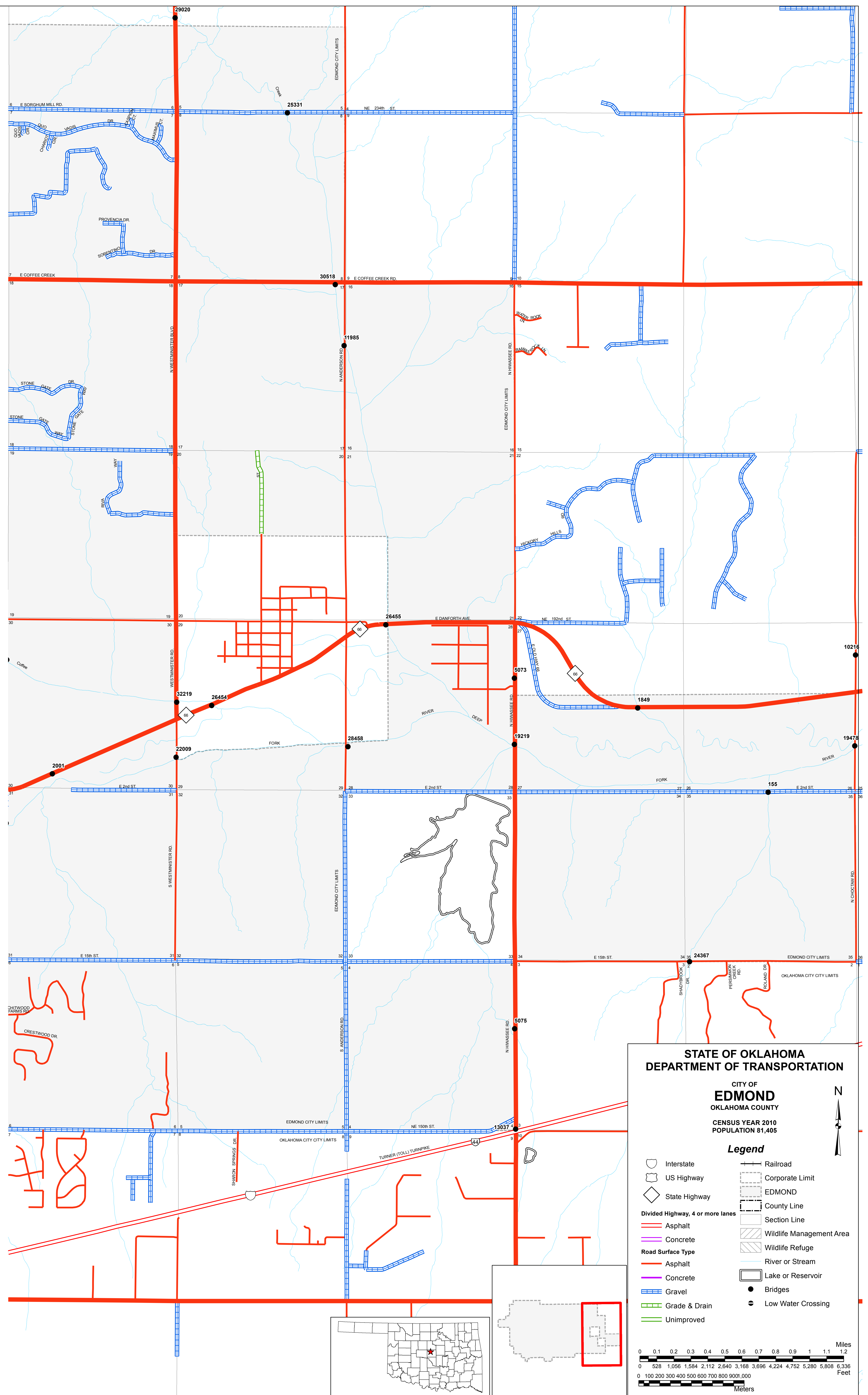
Feet
 0 100 200 300 400 500 600 700 800 900 1,000

Meters
 0 100 200 300 400 500 600 700 800 900 1,000



Copies of this map are available for public use at nominal cost.
OKLAHOMA DEPARTMENT OF TRANSPORTATION
PRINTING SERVICES Phone (405) 524-2586
200 N.E. 21st STREET
OKLAHOMA CITY, OKLAHOMA 73105-3204

This map indicates those roads known to the Department to be open to public travel. Placement of a road on the map has no relationship to maintenance responsibility by any level of government.



**STATE OF OKLAHOMA
DEPARTMENT OF TRANSPORTATION**

CITY OF
EDMOND
OKLAHOMA COUNTY
CENSUS YEAR 2010
POPULATION 81,405

Legend

Interstate	Railroad
US Highway	Corporate Limit
State Highway	EDMOND
Divided Highway, 4 or more lanes	County Line
Asphalt	Section Line
Concrete	Wildlife Management Area
Gravel	Wildlife Refuge
Grade & Drain	River or Stream
Unimproved	Lake or Reservoir
	Bridges
	Low Water Crossing

0 0.1 0.2 0.3 0.4 0.5 0.6 0.7 0.8 0.9 1 1.1 1.2 Miles
0 528 1,056 1,584 2,112 2,640 3,168 3,696 4,224 4,752 5,280 5,808 6,336 Feet
0 100 200 300 400 500 600 700 800 900 1,000 Meters