

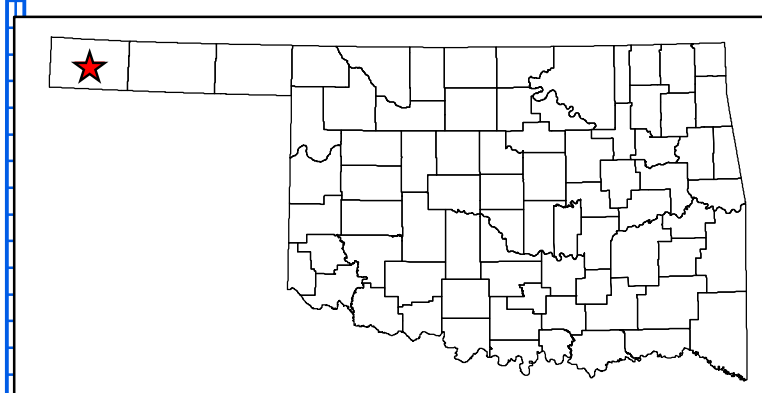
STATE OF OKLAHOMA
DEPARTMENT OF TRANSPORTATION

CITY OF
BOISE CITY
CIMARRON COUNTY

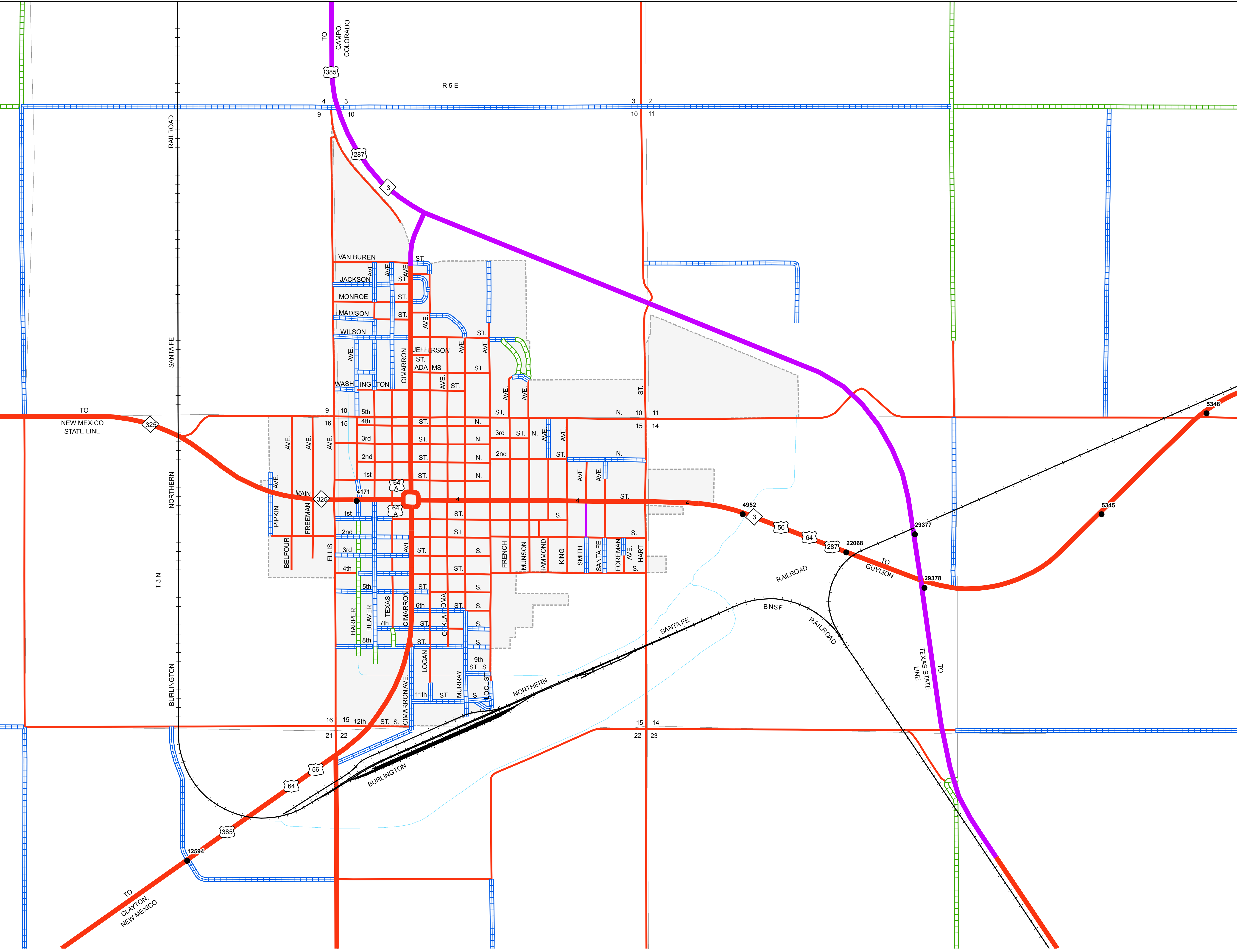
CENSUS YEAR 2010
POPULATION 1,266

Legend

- | | | | |
|--|----------------------------------|--|--------------------------|
| | Interstate | | Railroad |
| | US Highway | | Corporate Limit |
| | State Highway | | Boise City |
| | Divided Highway, 4 or more lanes | | County Line |
| | Asphalt | | Section Line |
| | Concrete | | Wildlife Management Area |
| | Gravel | | Wildlife Refuge |
| | Grade & Drain | | River or Stream |
| | Unimproved | | Lake or Reservoir |
| | | | Bridges |
| | | | Low Water Crossing |

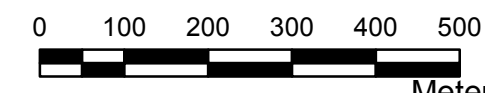
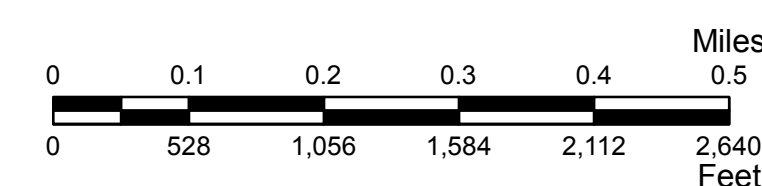


use at nominal cost.



Copies of this map are available for public use at nominal cost.
Address:
OKLAHOMA DEPARTMENT OF TRANSPORTATION
PRINTING SERVICES Phone (405) 521-2586
200 N.E. 21st STREET
OKLAHOMA CITY, OKLAHOMA 73105-3204

This map indicates those roads known to the Department to be open to public travel. Placement of a road on the map has no relationship to maintenance responsibility by any level of government.



© COPYRIGHT 2018
PRINTED AT STATE EXPENSE

NOT FOR RESALE

ALL RIGHTS RESERVED COMPUTER GENERATED September, 2018

BOISE CITY, CIMARRON COUNTY