

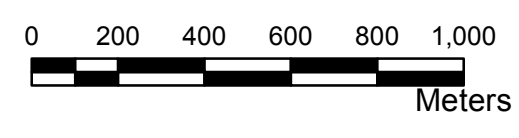
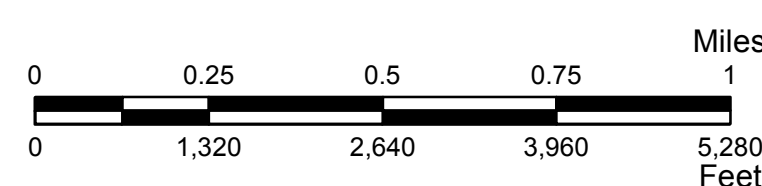
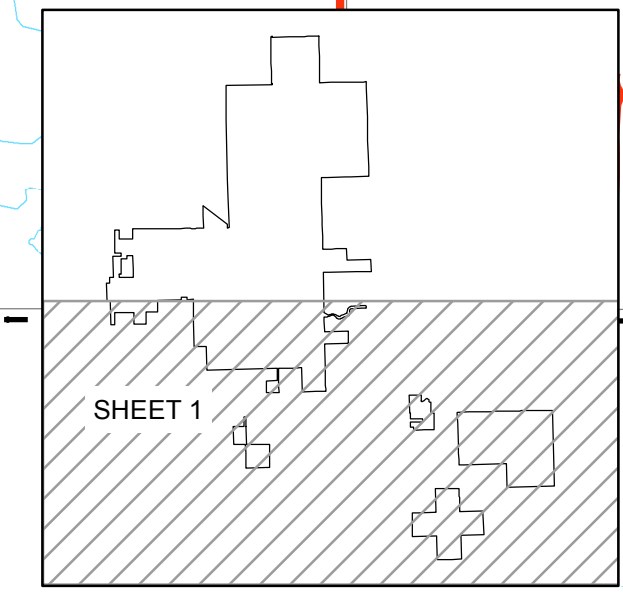
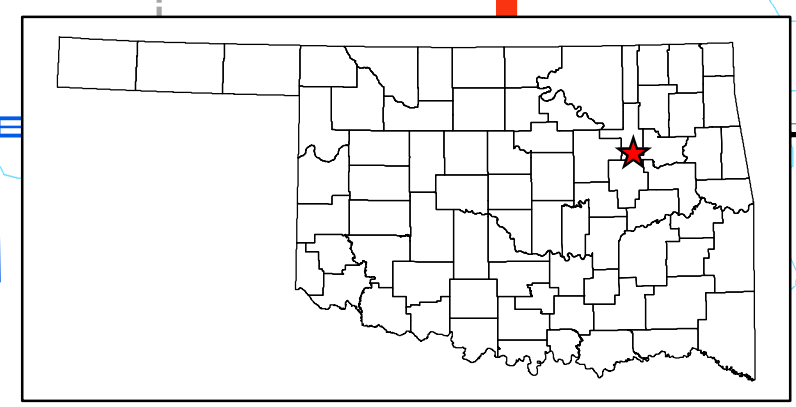
STATE OF OKLAHOMA
DEPARTMENT OF TRANSPORTATION

CITY OF
BIXBY
TULSA COUNTY

CENSUS YEAR 2010
POPULATION 20,884

Legend

	Interstate		Railroad		River or Stream
	US Highway		Corporate Limit		Lake or Reservoir
	State Highway		Bixby		Bridges
	Divided Highway, 4 or more lanes		County Line		Low Water Crossing
	Asphalt		Section Line		
	Concrete		Wildlife Management Area		
	Gravel		Wildlife Refuge		
	Grade & Drain				
	Unimproved				



Copies of this map are available for public use at nominal cost.
Address:
OKLAHOMA DEPARTMENT OF TRANSPORTATION
PRINTING SERVICES Phone (405) 521-2586
200 N.E. 21st STREET
OKLAHOMA CITY, OKLAHOMA 73105-3204

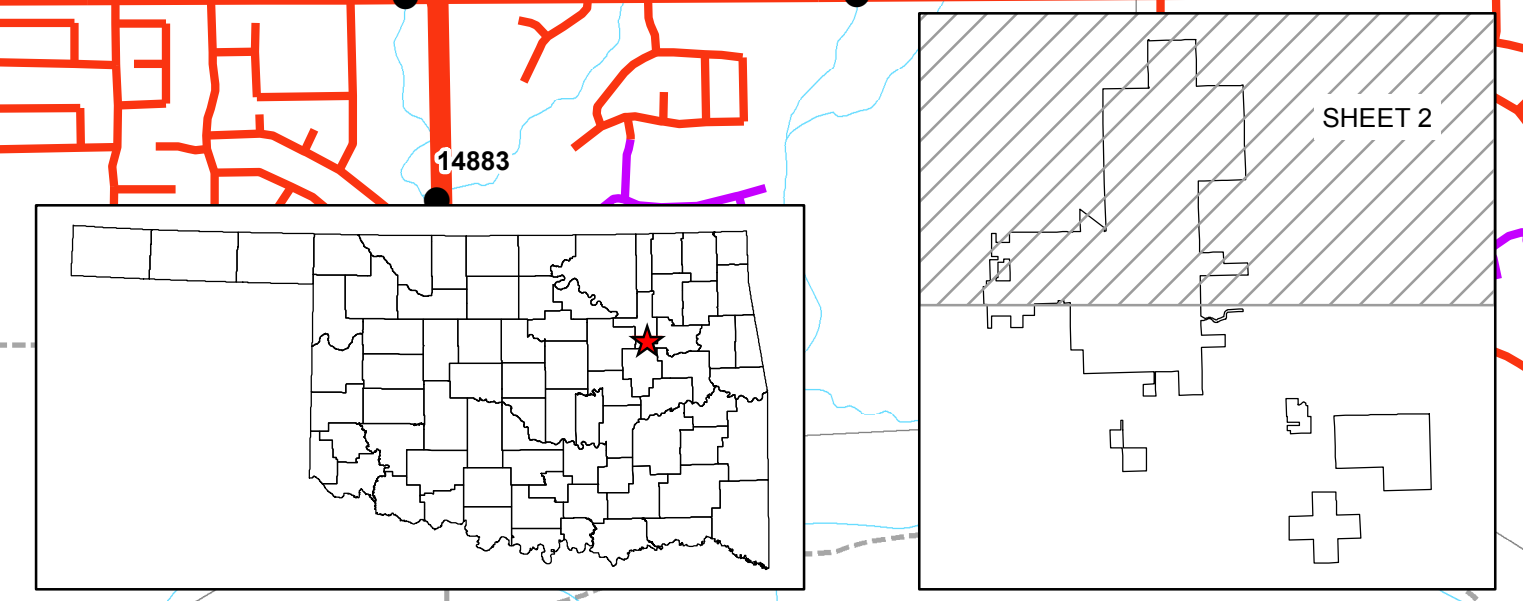
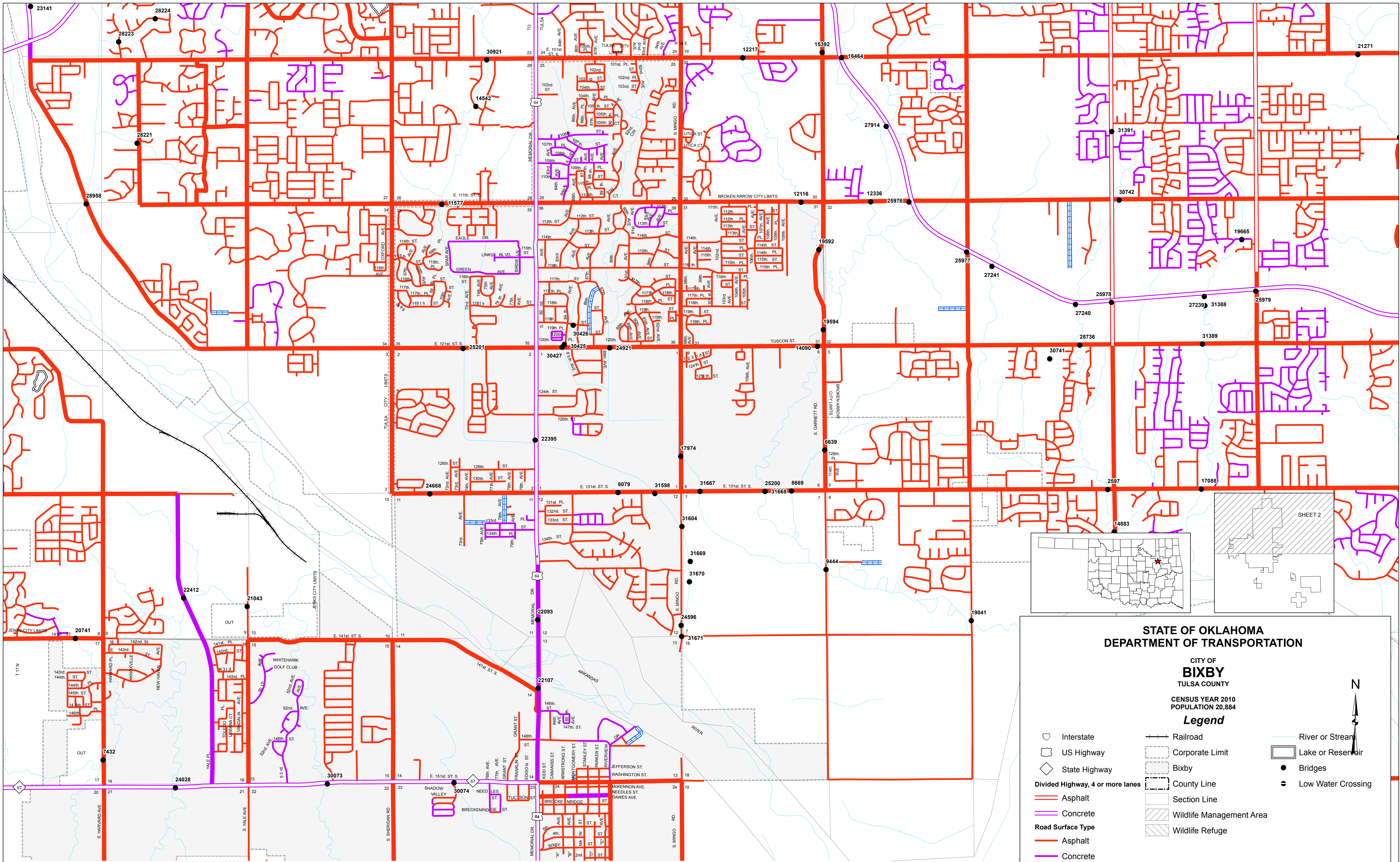
This map indicates those roads known to the Department to be open to public travel. Placement of a road on the map has no relationship to maintenance responsibility by any level of government.

© COPYRIGHT 2018
PRINTED AT STATE EXPENSE

NOT FOR RESALE

ALL RIGHTS RESERVED COMPUTER GENERATED September, 2018

BIXBY, TULSA COUNTY



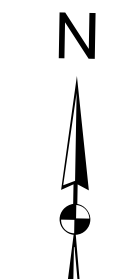
**STATE OF OKLAHOMA
DEPARTMENT OF TRANSPORTATION**

**CITY OF
BIXBY**
TULSA COUNTY

CENSUS YEAR 2010
POPULATION 20,884

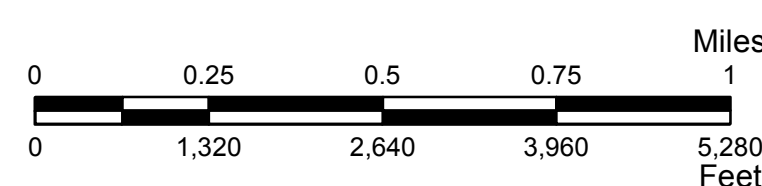
Legend

- | | | |
|----------------------------------|--------------------------|--------------------|
| Interstate | Railroad | River or Stream |
| US Highway | Corporate Limit | Lake or Reservoir |
| State Highway | Bixby | Bridges |
| Divided Highway, 4 or more lanes | County Line | Low Water Crossing |
| Asphalt | Section Line | |
| Concrete | Wildlife Management Area | |
| Gravel | Wildlife Refuge | |
| Grade & Drain | | |
| Unimproved | | |



Copies of this map are available for public use at nominal cost.
Address:
OKLAHOMA DEPARTMENT OF TRANSPORTATION
PRINTING SERVICES Phone (405) 521-2586
200 N.E. 21st STREET
OKLAHOMA CITY, OKLAHOMA 73105-3204

This map indicates those roads known to the Department to be open to public travel. Placement of a road on the map has no relationship to maintenance responsibility by any level of government.



© COPYRIGHT 2018
PRINTED AT STATE EXPENSE

NOT FOR RESALE

ALL RIGHTS RESERVED COMPUTER GENERATED September, 2018