

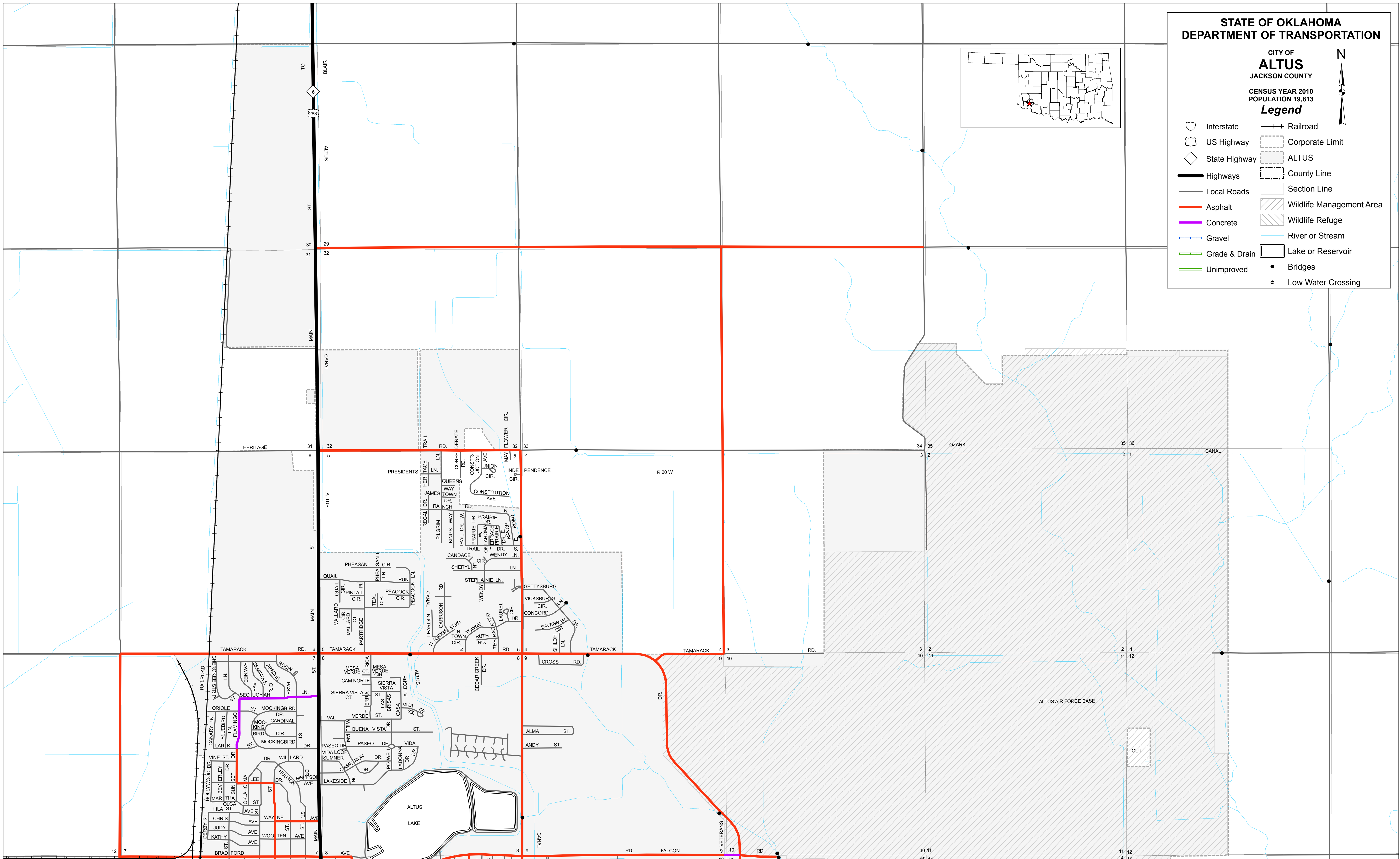
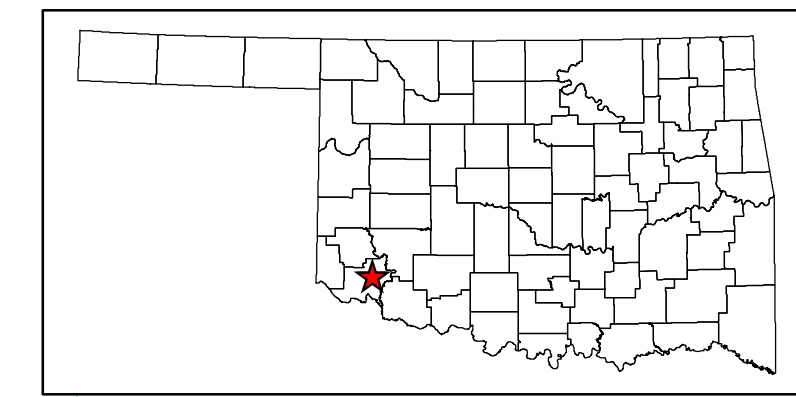
STATE OF OKLAHOMA
DEPARTMENT OF TRANSPORTATION

CITY OF
ALTUS
JACKSON COUNTY

CENSUS YEAR 2010
POPULATION 19,813

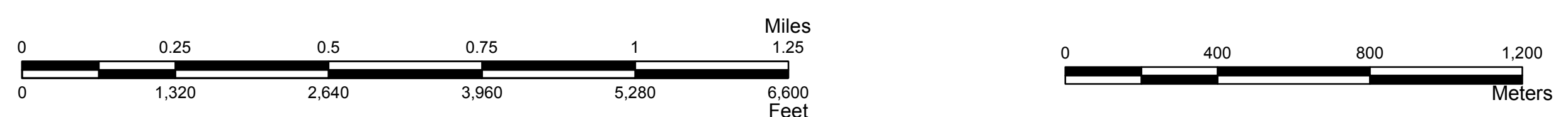
Legend

- | | | | |
|--|---------------|--|--------------------------|
| | Interstate | | Railroad |
| | US Highway | | Corporate Limit |
| | State Highway | | ALTUS |
| | Highways | | County Line |
| | Local Roads | | Section Line |
| | Asphalt | | Wildlife Management Area |
| | Concrete | | Wildlife Refuge |
| | Gravel | | River or Stream |
| | Grade & Drain | | Lake or Reservoir |
| | Unimproved | | Bridges |
| | | | Low Water Crossing |



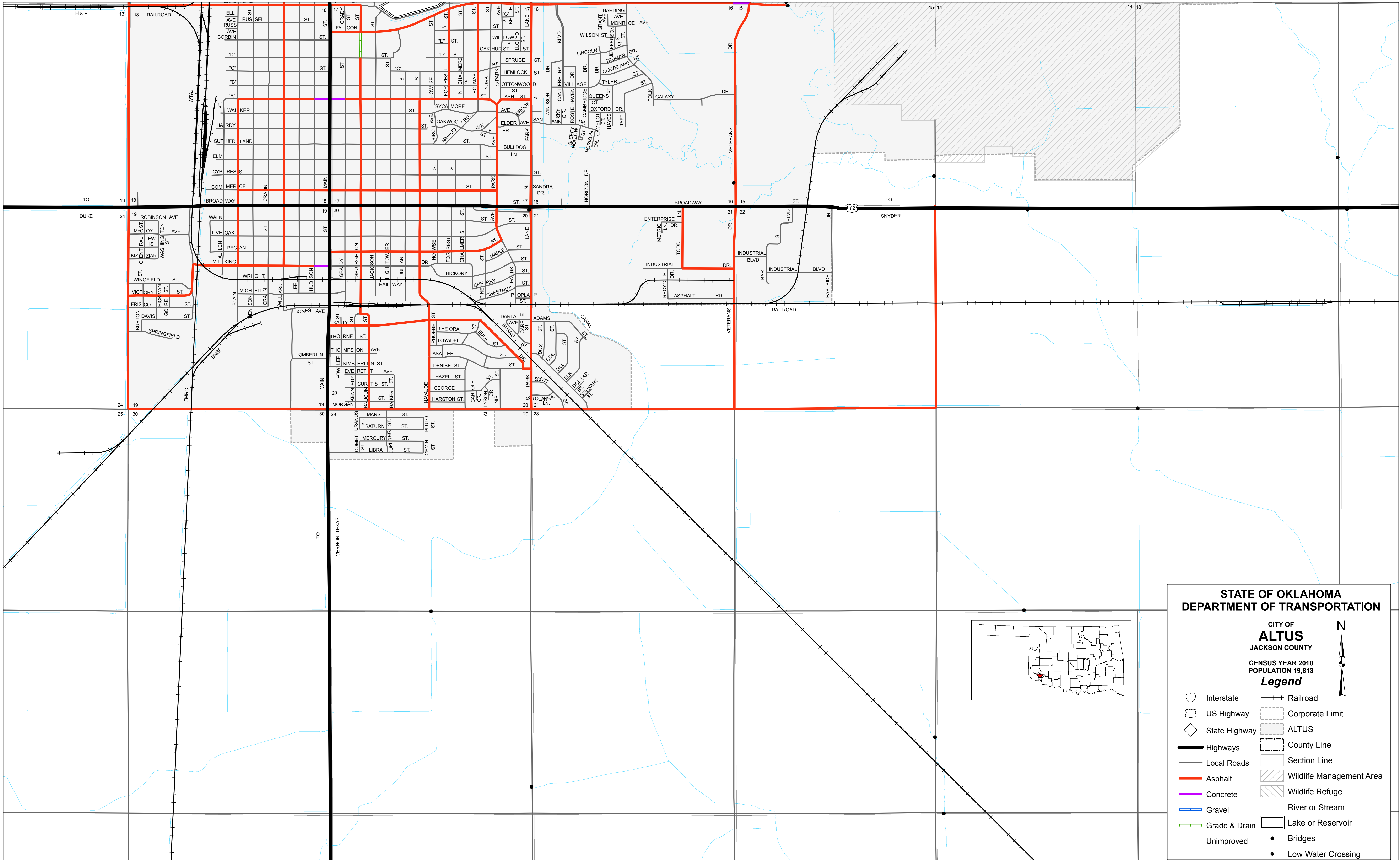
Copies of this map are available for public use at nominal cost.
Address:
OKLAHOMA DEPARTMENT OF TRANSPORTATION
PRINTING SERVICES Phone (405) 521-2586
200 N.E. 21st STREET
OKLAHOMA CITY, OKLAHOMA 73105-3204

This map indicates those roads known to the Department to be open to public travel. Placement of a road on the map has no relationship to maintenance responsibility by any level of government.



© COPYRIGHT 2018
PRINTED AT STATE EXPENSE
NOT FOR RESALE

ALL RIGHTS RESERVED COMPUTER GENERATED September, 2018
ALTUS, JACKSON COUNTY



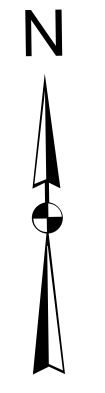
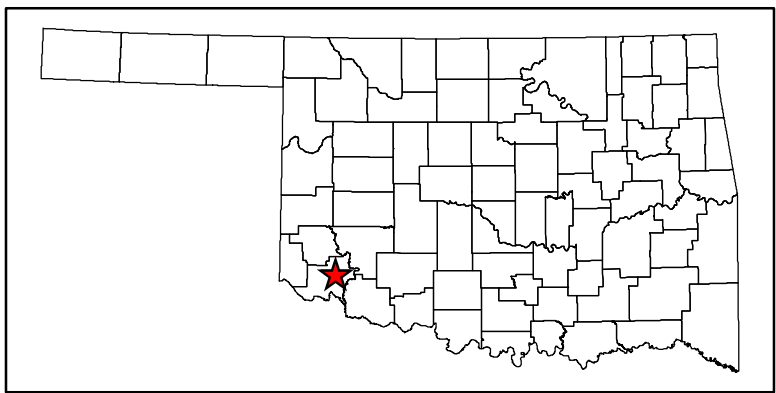
**STATE OF OKLAHOMA
DEPARTMENT OF TRANSPORTATION**

**CITY OF
ALTUS**
JACKSON COUNTY

CENSUS YEAR 2010
POPULATION 19,813

Legend

	Interstate		Railroad
	US Highway		Corporate Limit
	State Highway		ALTUS
	Highways		County Line
	Local Roads		Section Line
	Asphalt		Wildlife Management Area
	Concrete		Wildlife Refuge
	Gravel		River or Stream
	Grade & Drain		Lake or Reservoir
	Unimproved		Bridges
			Low Water Crossing



Copies of this map are available for public use at nominal cost.
 Address:
 OKLAHOMA DEPARTMENT OF TRANSPORTATION
 PRINTING SERVICES Phone (405) 521-2586
 200 N.E. 21st STREET
 OKLAHOMA CITY, OKLAHOMA 73105-3204

This map indicates those roads known to the Department to be open to public travel. Placement of a road on the map has no relationship to maintenance responsibility by any level of government.

