

OKLAHOMA DEPARTMENT OF TRANSPORTATION

I-35 South Public Hearing

06-22-2011 @ 6:00pm

Embassy Suites

2501 Conference Drive, Norman, OK 73069

Welcome to The Oklahoma Department of Transportation (ODOT) Public Hearing for I-35 South in Norman, OK

ODOT is preparing an environmental assessment for proposed improvements along I-35 South, from the north end of the I-35/SH 9W interchange ramps (located south of the Canadian River Bridge), north to approximately 1/2 mile north of Main Street in Norman. The proposed improvements include expanding I-35 to a 6-lane facility from the Canadian River Bridge to 1/2 mile north of Main Street, and reconstruction of the SH 9E, Lindsey Street, and Main Street interchanges.

The purpose of tonight's hearing is to present the findings of the EA. The EA documents the project's purpose and need; the range of alternatives considered (including the Preferred Alternative); the social, economic, and environmental effects of the alternatives; and the Agency coordination and Public Involvement activities conducted as part of the EA.

HEARING AGENDA

1. Welcome & Introductions
2. Project Status
3. Present Preferred Alternative
4. Question & Answer Session

PROJECT DEVELOPMENT PROCESS & TENTATIVE SCHEDULE

- 1st Public Meeting September 2007
- 2nd Public Meeting September 2008
- 3rd Public Meeting February 2009
- 4th Public Meeting September 2009
- Public Hearing June 2011
- Final FHWA Approval Late 2011

PRIMARY PURPOSES OF THIS PUBLIC HEARING

- Review I-35 South project goals & time lines.
- Present findings of the EA.
- Present the Preferred Alternative.
- Receive your input regarding critical social, economic, & environmental effects that may result from the project.

ITEMS CONSIDERED DURING PROJECT DEVELOPMENT

- Purpose and Need for Project
- Alternates
- Affected Environment
- Possible Environmental Consequences:
 - Air Quality Impacts
 - Community Impact Assessment
 - Consideration Relating to Pedestrians and Bicyclists
 - Construction Impacts
 - Cultural Resources and Archeological Sites
 - Economic Impacts
 - Effects on Public Parks, Wildlife and Waterfowl Refuges and Historic Sites
 - Energy
 - Environmental Justice
 - Farmland Impacts
 - Floodplain Issues
 - Hazardous Waste / Underground Storage Tanks
 - Irreversible and Irrecoverable Commitment of Resources
 - Joint Development
 - Land Use Impacts
 - Noise Impacts
 - Permits
 - Relationship of Local Short-Term Uses vs Long-Term Productivity
 - Relocation Impacts / Right-of-way Acquisition
 - Secondary and Cumulative Impacts
 - Social Impacts
 - Threatened or Endangered Species
 - Visual Impacts
 - Wetland Impacts
 - Wildlife Impacts
- Comments and Coordination / Public Involvement
 - State / Federal Agencies
 - Local / City Officials
 - Tribal Coordination
 - Interested Citizens
- Engineering / Design / Drainage Concerns
- Accidents / Safety Concerns

WHAT IS NEPA & THE ODOT DECISION MAKING PROCESS?

NEPA is an acronym for the Federal law called the National Environmental Policy Act, enacted in 1969. In order to use federal funds, a decision-making process that balances the social, economic, and environmental concerns must be conducted. Public involvement and comment are part of the NEPA process. The Department will solicit comments from State, Federal, Tribal and local agencies, and will continue to coordinate with them as necessary. Data will be collected on potential environmental issues such as noise, wetlands, cultural resources, historic resources, parks, displacements of homes or businesses, etc., to evaluate potential impacts of the proposed improvements. Economic impacts such as construction costs, estimated right-of-way, and utility cost data will also be evaluated. This information is utilized to make sound decisions in transportation improvements.

WHAT HAPPENS NEXT?

The Department will review and consider comments received from this public hearing. The final EA will be prepared and submitted to FHWA for its approval. After this final approval is received, federal funds may be utilized for design, right-of-way and construction activities.

QUESTIONS? COMMENTS? MAILING LIST?

If you have an questions or comments about the Oklahoma Department of Transportation's proposed project, please visit www.odot.org/meetings/other.php to fill out an official comment form, or send the enclosed comment form to:

Also, be sure to sign in tonight to add your name to the project mailing list, or, send your mailing address to:

SCOTT STEGMANN

Oklahoma Department of Transportation
Environmental Programs Division
200 N.E. 21st St.
Oklahoma City, OK 73105
(405) 522-8014

DIANE ABERNATHY SAIC

3700 W. Robinson, Suite 200
Norman, OK 73072
jeanna.d.abernathy@saic.com
(405) 701-3167

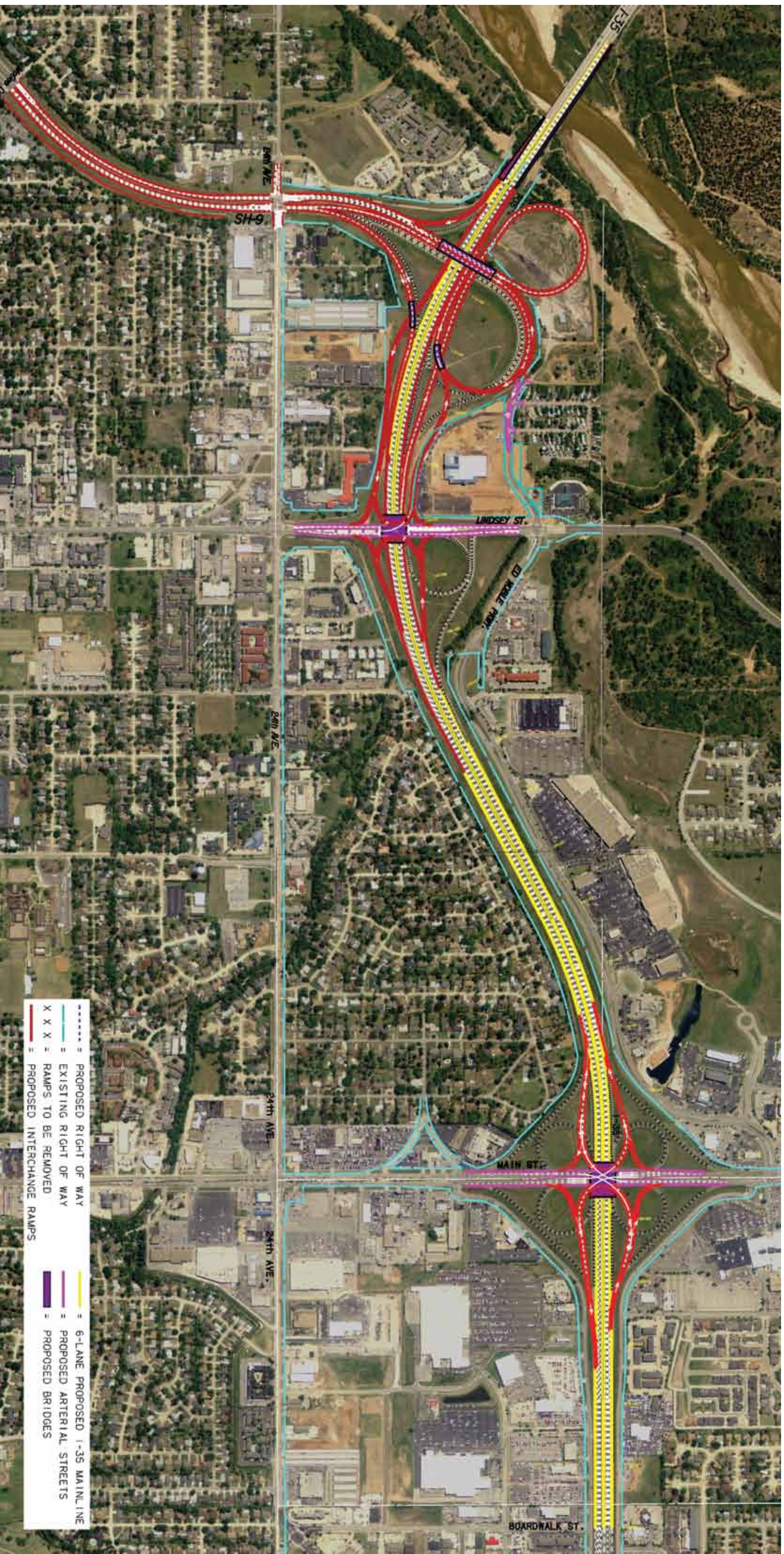
Copies of the EA will be available for public review on June 7, 2011 at the ODOT website www.okladot.state.ok.us/meetings/other.php, as well as at the following locations:

**City of Norman
Office of City Clerk**
201 W. Grey St.
Municipal Complex,
Norman, OK

Norman Public Library
225 N. Webster
Norman, OK

**Downtown Oklahoma City
Metropolitan Library**
131 Dean A. McGee Ave.
Oklahoma City, OK

COMMENTS MUST BE RECEIVED BY JULY 6, 2011



**I-35 South Preferred Alternative
S.H. 9 to Main St.**