

WELCOME

**ODOT PUBLIC MEETING
FOR U.S. 70 IN VALLIANT, OK**

06/16/2011 – 5:00pm





DIVISION 2 INFORMATION

Division Engineer:	Calvin Carney
Counties Serviced:	9
Total Lane Miles:	3,813.42
Bridges:	936



MEETING INFORMATION

Purpose & Intent

WWW.ODOT.ORG/MEETINGS/OTHER.PHP



PURPOSE OF THIS MEETING

The purpose of this meeting is to provide to the citizens of Valliant a comparison between the three (3) alternative alignment options to improve U.S. 70 through Valliant, OK. These alternatives include; widening to a 5-lane highway through town with a grade separation at the rail-road; without a grade separation at the rail-road and a bypass around town.





PURPOSE OF THIS PROJECT

The purpose of this project is to improve U.S. 70 thru Valliant, OK as part of a NHS Transportation Improvement Corridor. From 0.4 miles east of Watermill Road east approximately 5.4 miles to the tie with the five-lane section at Millerton.



ENVIRONMENTAL INFORMATION

WWW.ODOT.ORG/MEETINGS/OTHER.PHP



ENVIRONMENTAL INFORMATION

WHAT IS NEPA AND THE ODOT DECISION MAKING PROCESS?

NEPA is an acronym for the Federal Law called the National Environmental Policy Act, enacted in 1969. In order to use federal funds, a decision-making process that balances the social, economic, and environmental concerns must be conducted. Public Involvement and comments are part of the NEPA process. The Department will solicit comments from State, Federal, Tribal, and local agencies, and will continue to coordinate with them as necessary. Data will be collected on potential environmental issues such as noise, wetlands, cultural resources, historic resources, parks, displacements of homes or businesses, etc., to evaluate potential impacts of the proposed improvements. Economic impacts such as construction costs, estimated right-of-way, and utility cost data will also be evaluated. This information is utilized to make sound decisions in transportation improvements.

ITEMS CONSIDERED DURING PROJECT DEVELOPMENT

- Purpose and Need for project
- Alternates
- Affected Environment
- Possible Environmental Consequences:
 - Air Quality Impacts
 - Community Impact Assessment
 - Consideration of Pedestrians and Bicyclists
 - Construction Impacts
 - Cultural Resources and Archeological Sites
 - Economic Impacts
 - Effects on Public Parks, Wildlife, and Waterfowl Refuges and Historic Sites
- Energy
- Environmental Justice
- Farmland Impacts
- Floodplain Issues
- Hazardous Water/Underground Storage Tanks
- Irreversible & Irrecoverable Commitment of resources
- Joint Development
- Land Use Impacts
- Noise Impacts
- Permits
- Relationship of Local Short-Term vs. Long-Term productivity
- Relocation Impacts
- Secondary and Cumulative Impacts
- Social Impacts
- Threatened or Endangered Species
- Visual Impacts
- Wetland Impacts
- Wildlife Impacts
- Comments and Coordination /Public Involvement
 - State / Federal Agencies
 - Local/City Officials
 - Tribal Coordination
 - Interested Citizens
- Engineering Concerns
- Accidents/Safety Concerns



ENVIRONMENTAL & COMMUNITY IMPACT COMPARISON MATRIX

Evaluation Category	Alternative No. 1	Alternative No. 2	Alternative No. 3
	Bypass to the North of Valliant	5 - Lane through Valliant on existing US-70 with Grade Separated RR Crossing	5 - Lane through Valliant on existing US-70 with at Grade RR Crossing
Proposed Project Length	5.9 miles	5.4 miles	5.4 miles
Wetland Impacts	0.2 acre	1.6 acres	1.6 acres
Stream Impacts	2.9 acres	0.6 acres	0.6 acres
Archaeological Sites	1	3	3
Historical Sites	0	13	13
Hazardous Waste Sites	2	4	4
Underground Storage Tank Sites	1	9	9
Potential Noise Impact	1	3	3
Community Impact			
Commercial Relocations	5	11	4
Loss of Parking Spaces	No	Yes	Yes
Residential Relocations	11	8	2



ESTIMATED COST OF PROJECT

ALT. 1.: A bypass 4-lane highway around the city.

\$58 million

ALT. 2.: A 5-lane highway without a raise section at the rail-road crossing.

\$38 million

ALT. 3.: A 5-lane highway with a raised section at the rail-road crossing.

\$43 million



PROJECT INFORMATION

Information about the project and its design



PROJECT INFORMATION

- Project is currently in the 8-year construction work program.
- Project is part of the NHS (National Highway System) Improvement Corr.
- Current ADT (Average Daily Traffic) = 4500 vehicles a day in city.
- Future estimated ADT = 8000 vehicles a day in city.
- Current facility is a 2-lane highway with the exception of a 4-lane section in downtown Valliant.
- Construction will tie into existing 5-lanes sections of highway already constructed.



NATIONAL HIGHWAY SYSTEM TRANSPORTATION CORRIDOR



	OTHER PRINCIPAL ARTERIAL		INTERSTATE HIGHWAY		INTERSTATE HIGHWAY SYMBOL		COUNTY LINES
	NON-NHS TOLL ROUTE		NHS CONNECTOR		US HIGHWAY SYMBOL		RIVERS AND LAKES
	PROPOSED NHS ROUTE		STRAHNET		STATE HIGHWAY SYMBOL		URBAN AREA
	CONGRESSIONAL HIGH PRIORITY ROUTE						



PROJECT LENGTH & LOCATION





BEFORE CONSTRUCTION





**ARTIST RENDERING
AFTER CONSTRUCTION**



WWW.ODOT.ORG/MEETINGS/OTHER.PHP

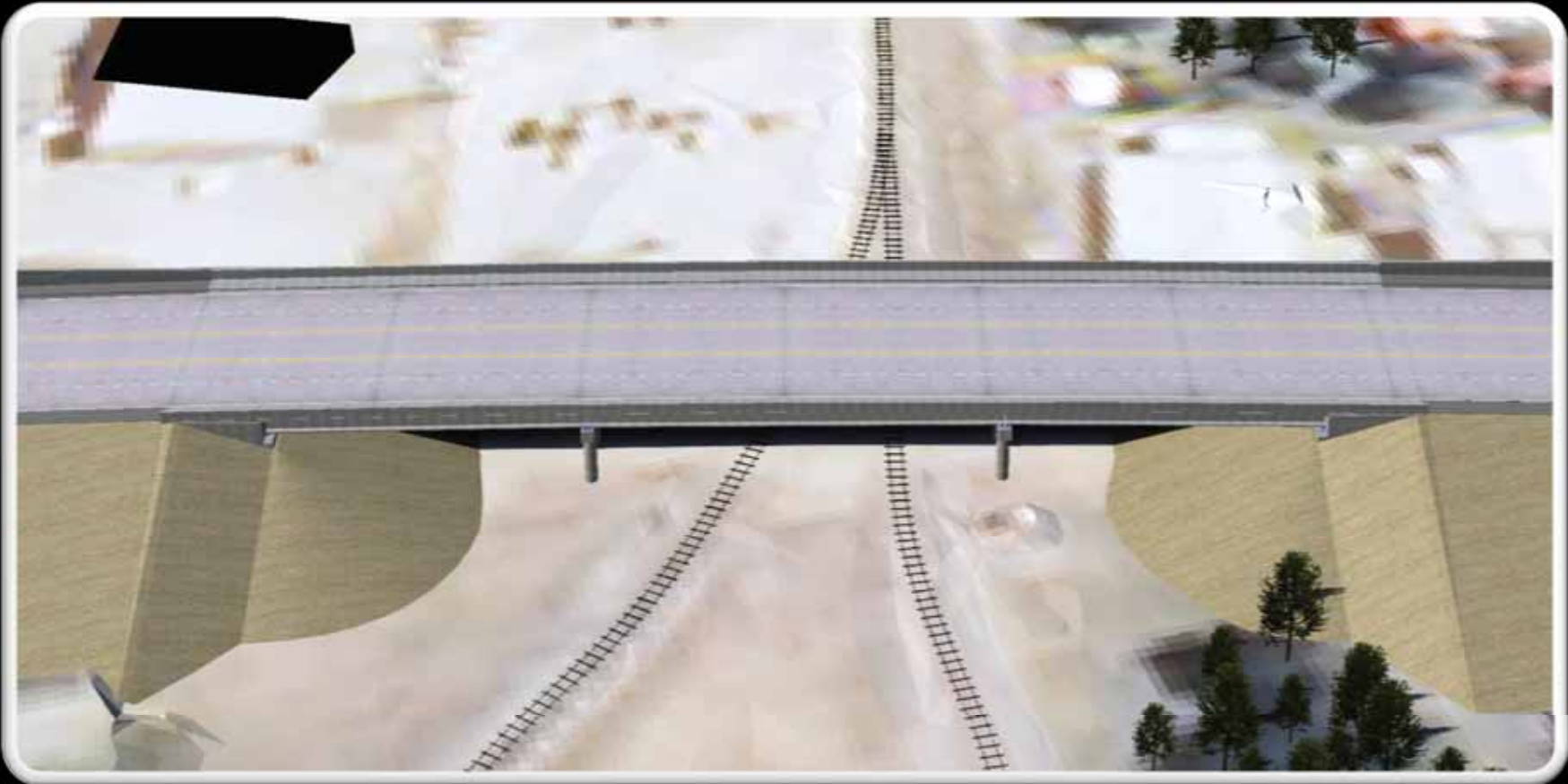


**EXAMPLE OF A RAILROAD CROSSING
ACROSS A 5-LANE SECTION**





**ARTIST RENDERING
AFTER CONSTRUCTION**





QUESTIONS?

COMMENTS?

WWW.ODOT.ORG/MEETINGS/OTHER.PHP

THANK YOU FOR COMING

**ODOT PUBLIC MEETING
U.S. 70 IN VALLIANT, OK**

<http://www.odot.org/meetings/other.php>

