

WELCOME

S.H. 28 PROJECT

Oklahoma Department of Transportation

Public Hearing

Mayes County, OK

08/17/2010 @ 6:00pm – Pensacola, OK

Purpose of this Hearing

The purpose of this hearing is to present the findings of the Environmental Assessment (EA). The EA documents the project's purpose and need; the range of alternatives considered (including the Preferred Alternative); the social, economic, and environmental effects of the alternatives; and the Agency coordination and Public Involvement activities conducted as part of the EA.



Purpose of this Hearing

Public hearing to solicit public comment on proposed improvements to SH 28 from the intersection of US 69/SH 28 in Adair, east approximately 13 miles to the intersection of SH 82/SH 28 in Langley. The initial improvements will address safety issues and bridge replacements for an improved two (2) lane facility, with four (4) lane sections in the cities of Adair, Pensacola, and Langley.

[HTTP://WWW.ODOT.ORG/MEETINGS/OTHER.PHP](http://www.odot.org/meetings/other.php)



Purpose of this Project

The purpose of this project is to improve SH-28 from the intersection of US-69/SH-28 in Adair, east approximately 13 miles to the intersection of SH-82/SH-28 in Langley, Mayes County. This project will address safety issues and bridge replacements for an improved 2 lanes with shoulders and 4 lane sections thru Adair, Pensacola, and Langley.



Copies of the EA are available for public inspection on the ODOT website:

<http://www.okladot.state.ok.us/meetings/other.htm>

as well as at the following locations:

Adair Town Hall
533 East Main Street
Adair, OK 74330

Langley City Hall
324 West Osage Ave
Langley, OK 74350

[HTTP://WWW.ODOT.ORG/MEETINGS/OTHER.PHP](http://www.odot.org/meetings/other.php)



Copies of the EA are available for public inspection at the following locations:

Langley Public Library

3rd and Osage

Langley, OK 74350

ODOT Division VII Headquarters

4002 N. Mingo Valley Expressway

Tulsa, OK 74116

[HTTP://WWW.ODOT.ORG/MEETINGS/OTHER.PHP](http://www.odot.org/meetings/other.php)

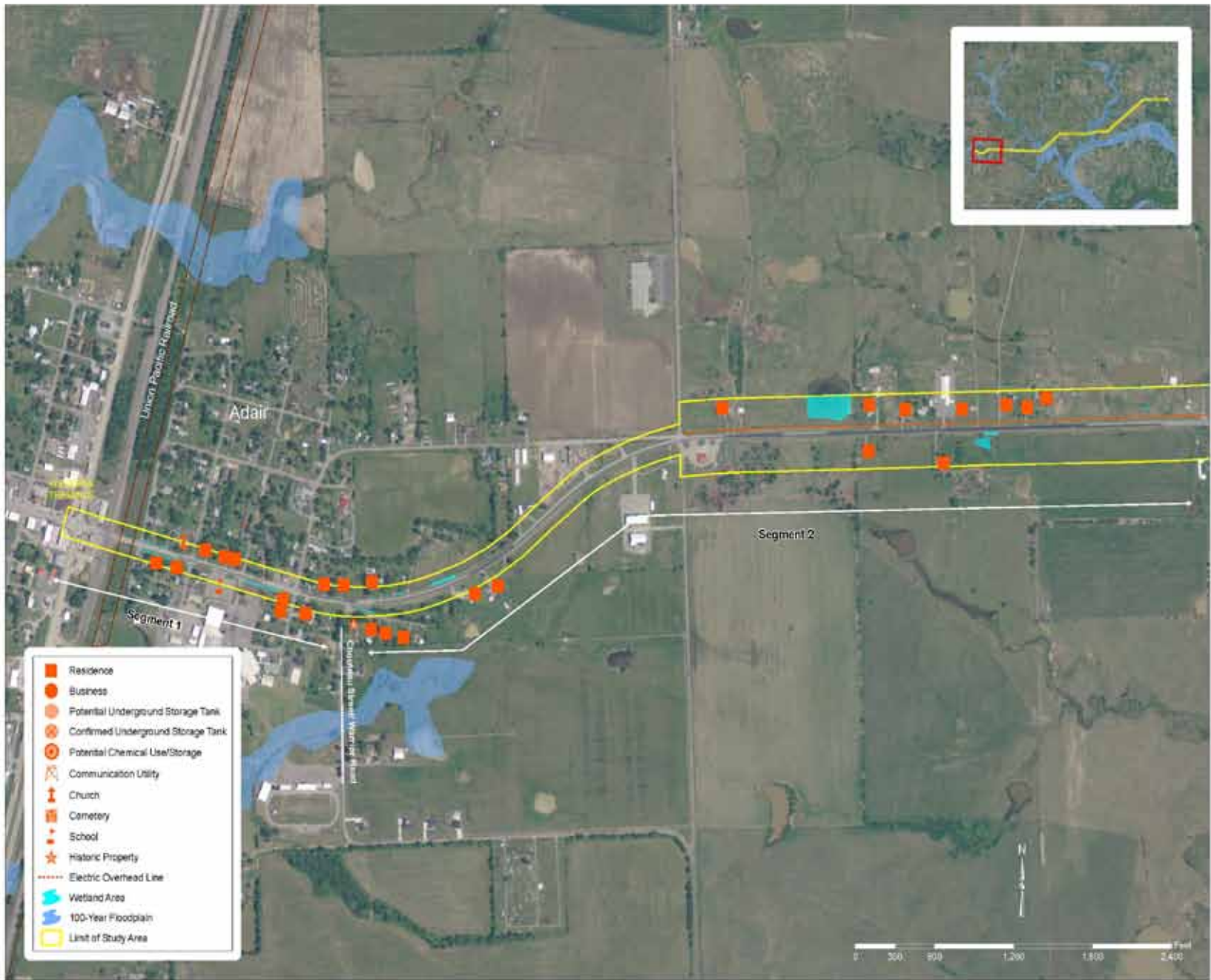


Environmental Constraints

Information about the Environmental Constraints.

[HTTP://WWW.ODOT.ORG/MEETINGS/OTHER.PHP](http://www.odot.org/meetings/other.php)





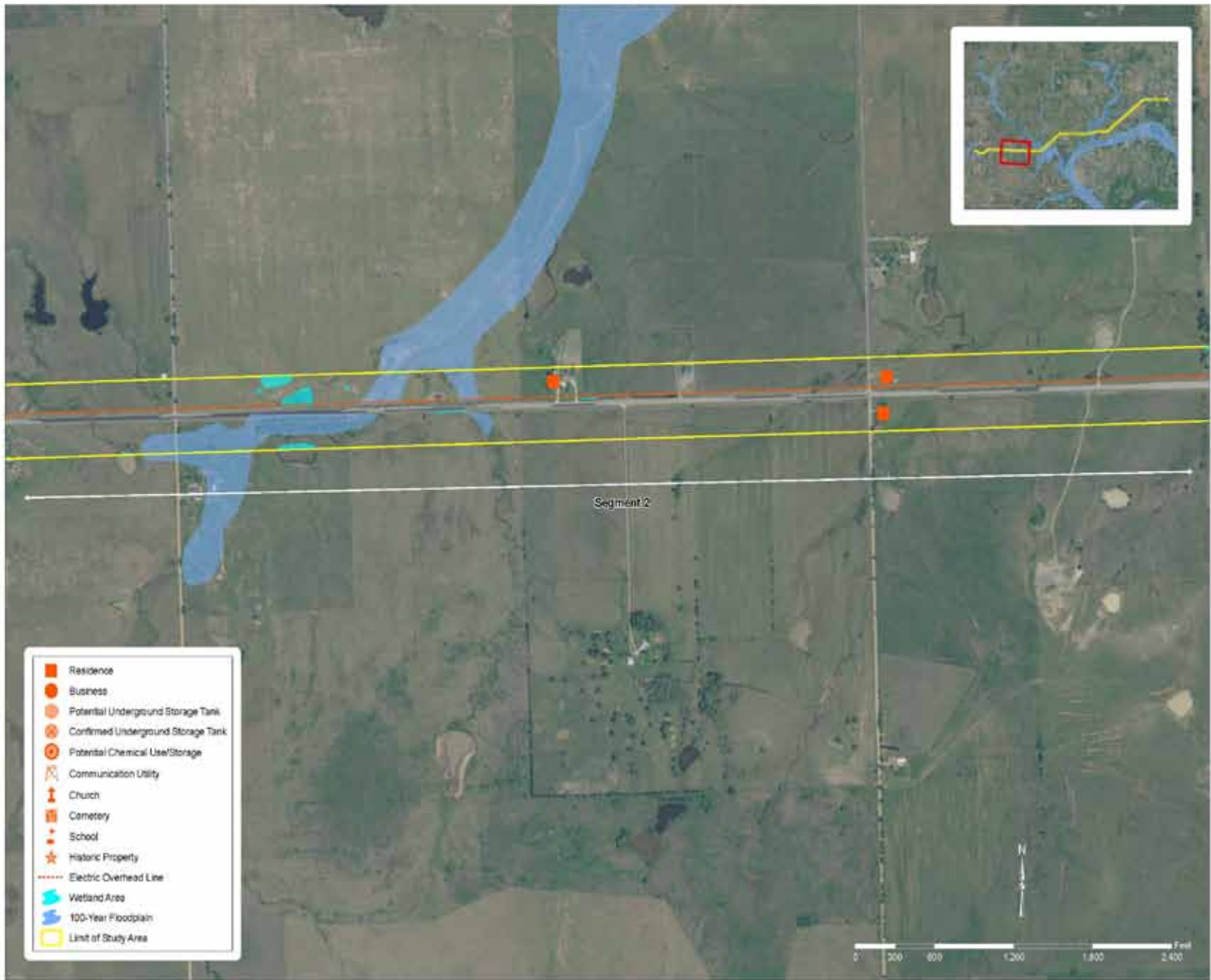
- Residence
- Business
- Potential Underground Storage Tank
- Confirmed Underground Storage Tank
- C Potential Chemical Use/Storage
- Communication Utility
- C Church
- C Cemetery
- S School
- ★ Historic Property
- Electric Overhead Line
- Wetland Area
- 100-Year Floodplain
- Limit of Study Area



Figure Title:	Constraints Map
Document Title:	Environmental Assessment
Client:	Oklahoma Department of Transportation
Location:	SH 26, Adair to Langley

Date:	7/22/2010
Scale:	As Shown
Designed By:	DA
Approved By:	DA
Drawn By:	TS

Project Number:	4050700301
Figure Number:	1 OF 8



- Residence
- Business
- Potential Underground Storage Tank
- Confirmed Underground Storage Tank
- Potential Chemical Use/Storage
- Communication Utility
- ⛪ Church
- ⚰ Cemetery
- 🎓 School
- ★ Historic Property
- Electric Overhead Line
- Wetland Area
- 100-Year Floodplain
- Limit of Study Area

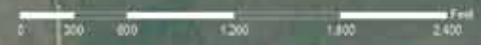
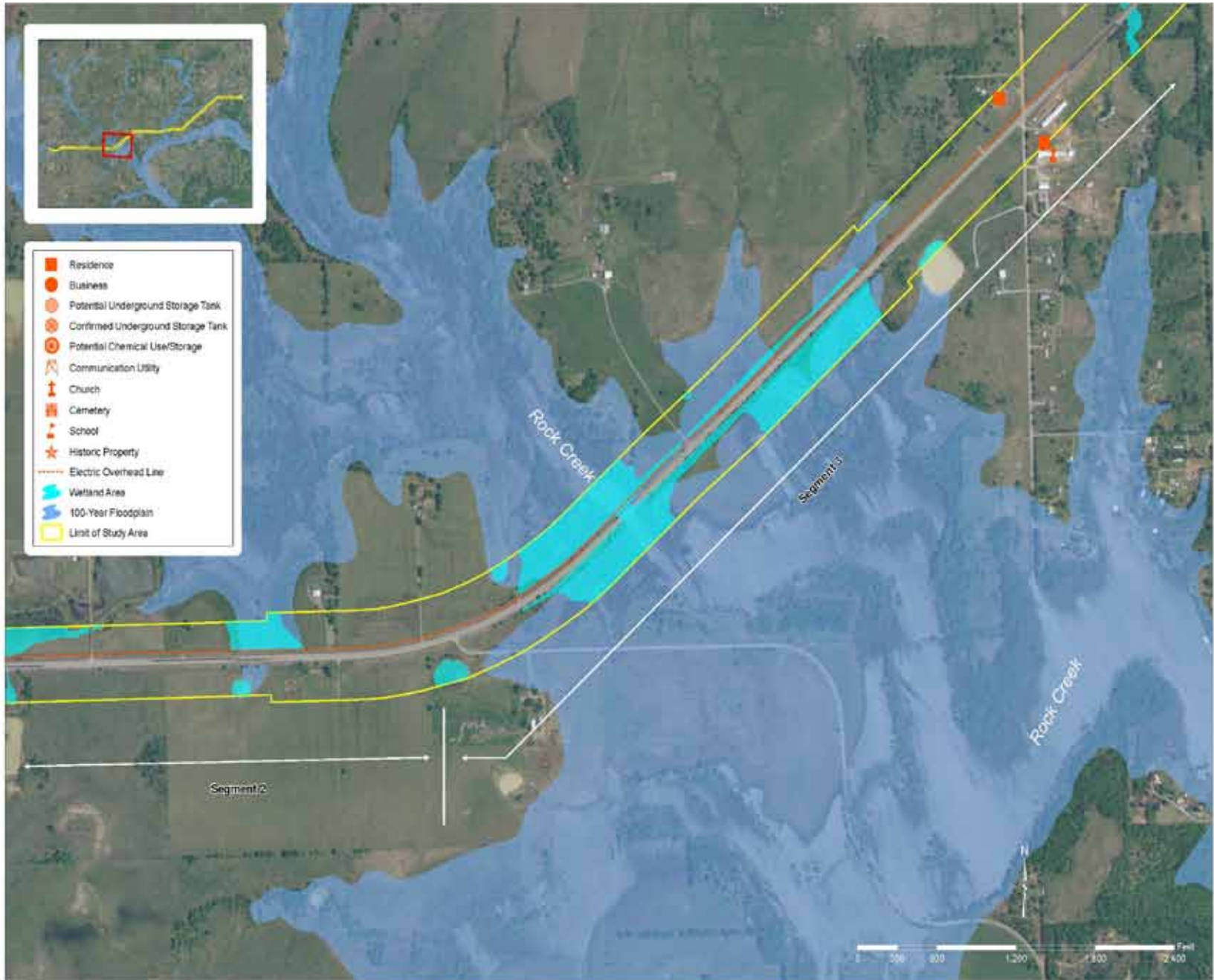


Figure Title:	Constraints Map
Document Title:	Environmental Assessment
Client:	Oklahoma Department of Transportation
Location:	SH 26, Acar to Langley

Date:	7/22/2010
Scale:	As Shown
Designed By:	DA
Approved By:	DA
Drawn By:	TS

Project Number:	4050700301
Figure Number:	2 OF 8



- Residence
- Business
- Potential Underground Storage Tank
- Confirmed Underground Storage Tank
- Potential Chemical Use/Storage
- ⓧ Communication Utility
- ⓧ Church
- ⓧ Cemetery
- ⓧ School
- ★ Historic Property
- Electric Overhead Line
- Wetland Area
- 100-Year Floodplain
- Limit of Study Area

Constraints Map	
Document Title	Environmental Assessment
Client	Oklahoma Department of Transportation
Location	SH 28, Adair to Langley

Date	7/22/2010
Scale	As Shown
Designed By	DA
Approved By	DA
Drawn By	TS

Project Number	4050700301
Figure Number	3 OF 8

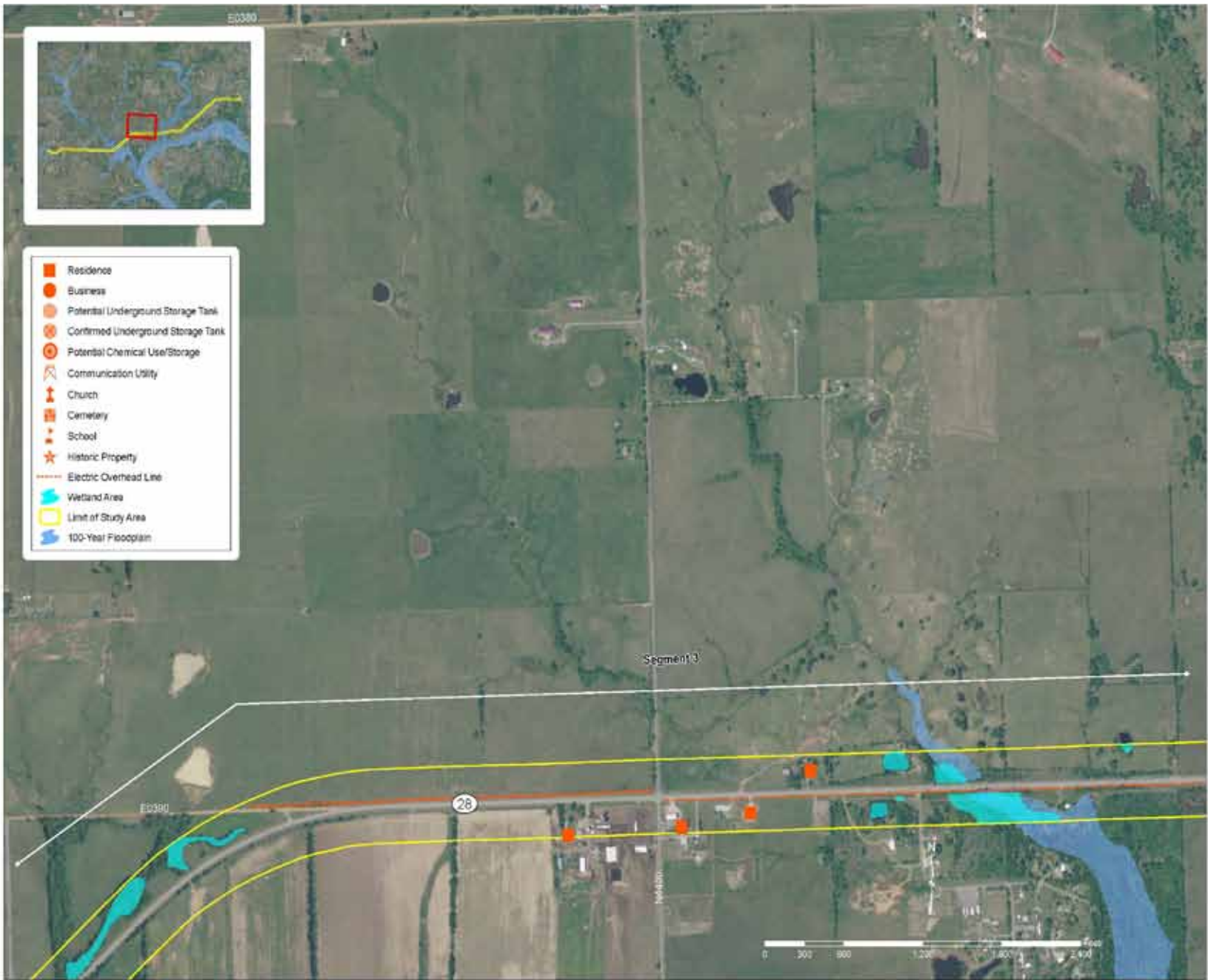


Figure Title	Constraints Map
Document Title	Environmental Assessment
Client	Oklahoma Department of Transportation
Author	SH 28, Acair to Langley

Date	7/22/2010
Scale	As Shown
Designed By	DA
Approved By	DA
Drawn By	TS

Project Number	4050700301
Figure Number	
4 OF 8	

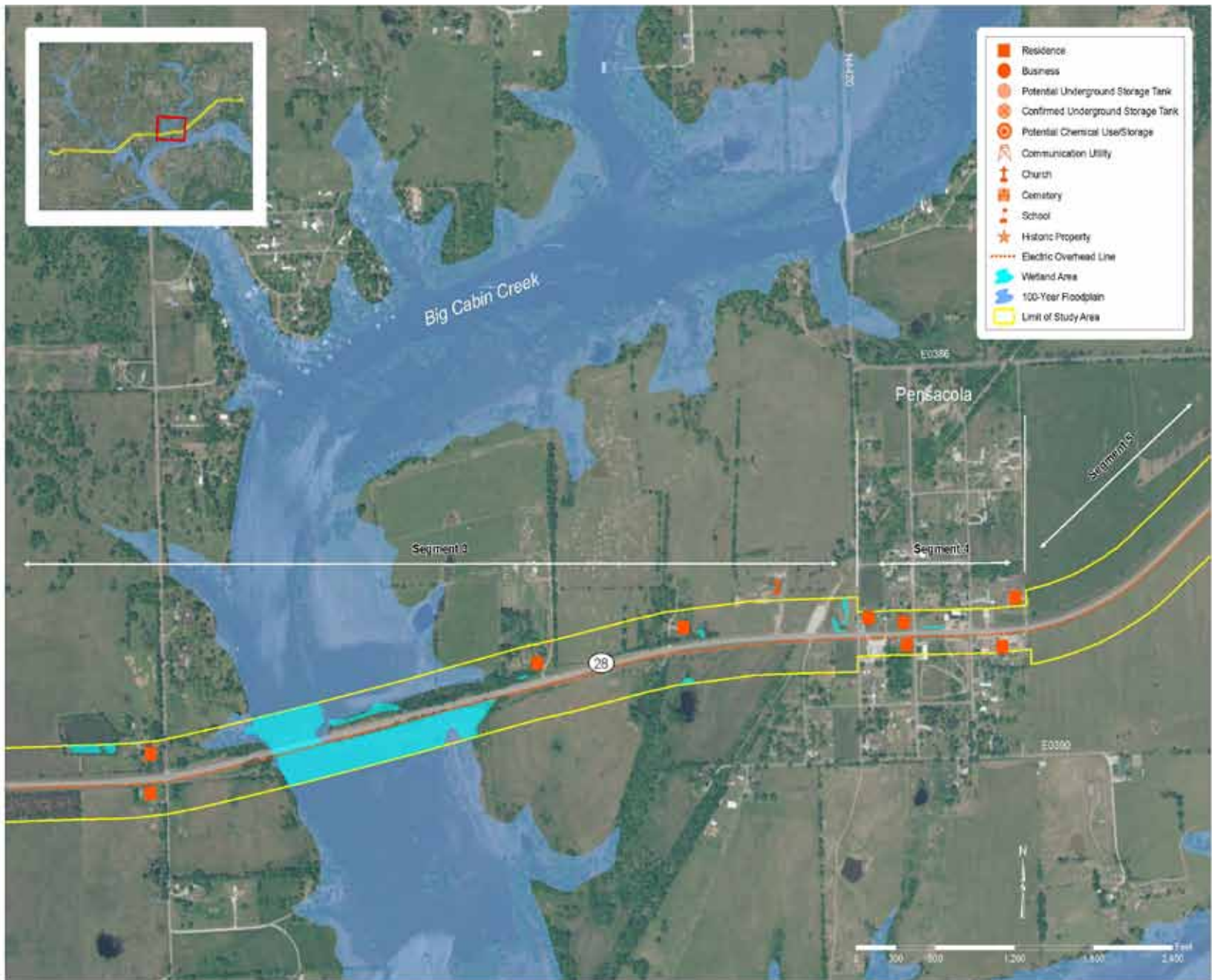
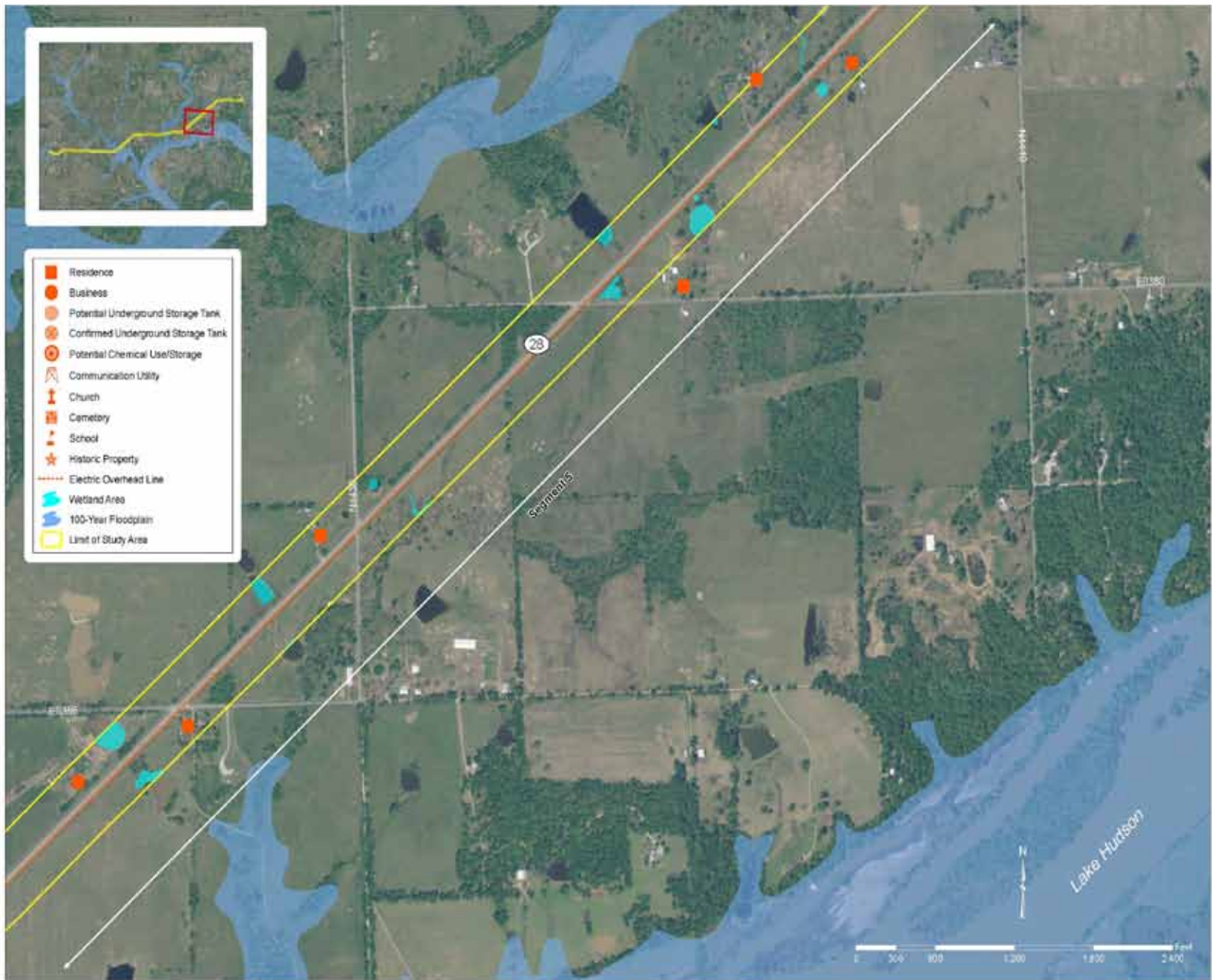


Figure Title	Constraints Map
Document Title	Environmental Assessment
Client	Oklahoma Department of Transportation
Project	SH 26, Acair to Langley

Date	7/22/2010
Scale	As Shown
Designed By	DA
Approved By	DA
Drawn By	TS

Project Number	4050700301
Figure Number	5 OF 8



- Residence
- Business
- Potential Underground Storage Tank
- Confirmed Underground Storage Tank
- Potential Chemical Use/Storage
- Communication Utility
- + Church
- Cemetery
- ▲ School
- ★ Historic Property
- Electric Overhead Line
- Wetland Area
- 100-Year Floodplain
- Limit of Study Area

Figure Title:	Constraints Map
Prepared For:	Environmental Assessment
Client:	Oklahoma Department of Transportation
Location:	SH 28, Acair to Langley

Date:	7/22/2010
Scale:	As Shown
Designed By:	DA
Approved By:	DA
Drawn By:	TS

Project Number:	4050700301
Figure Number:	6 OF 8

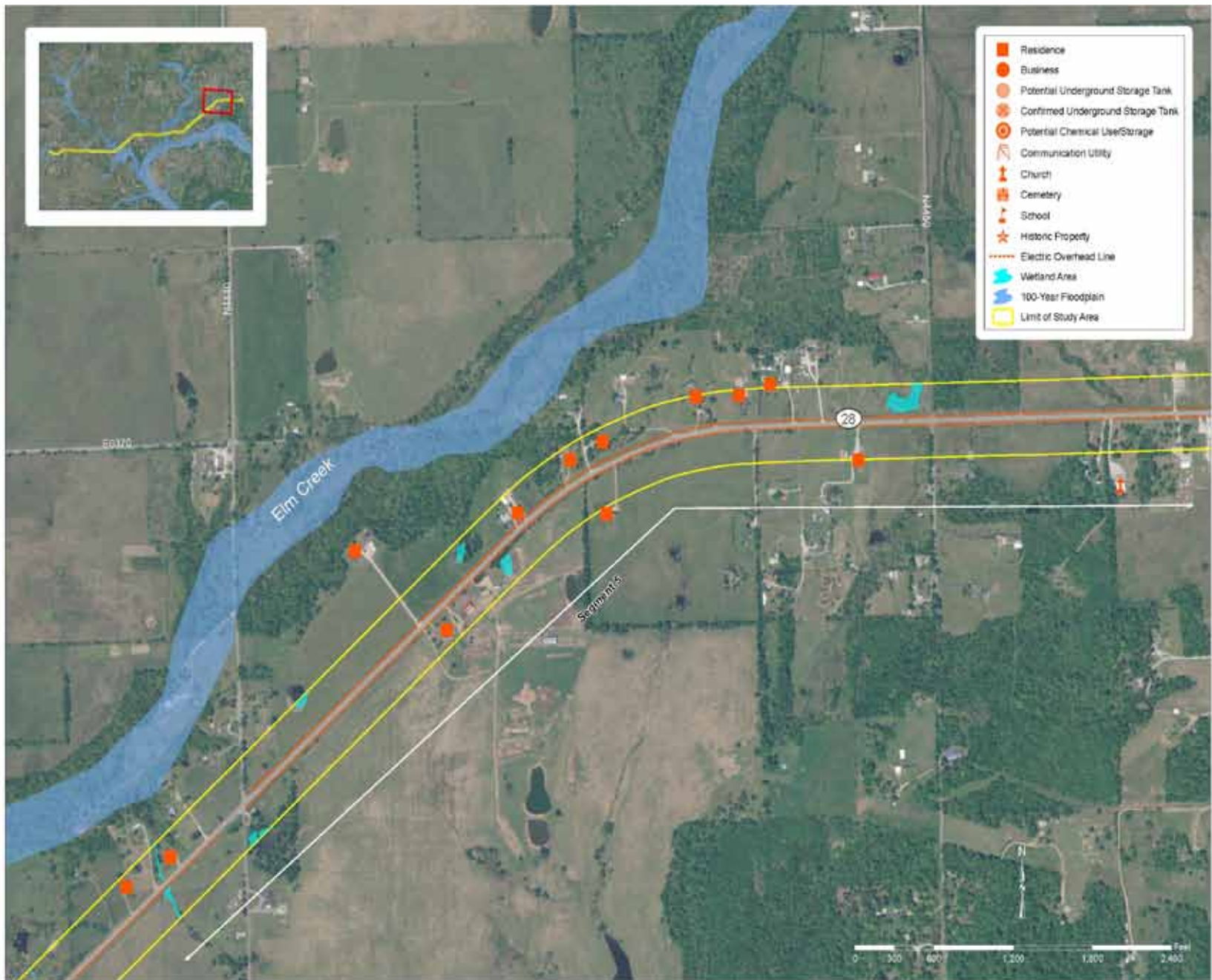
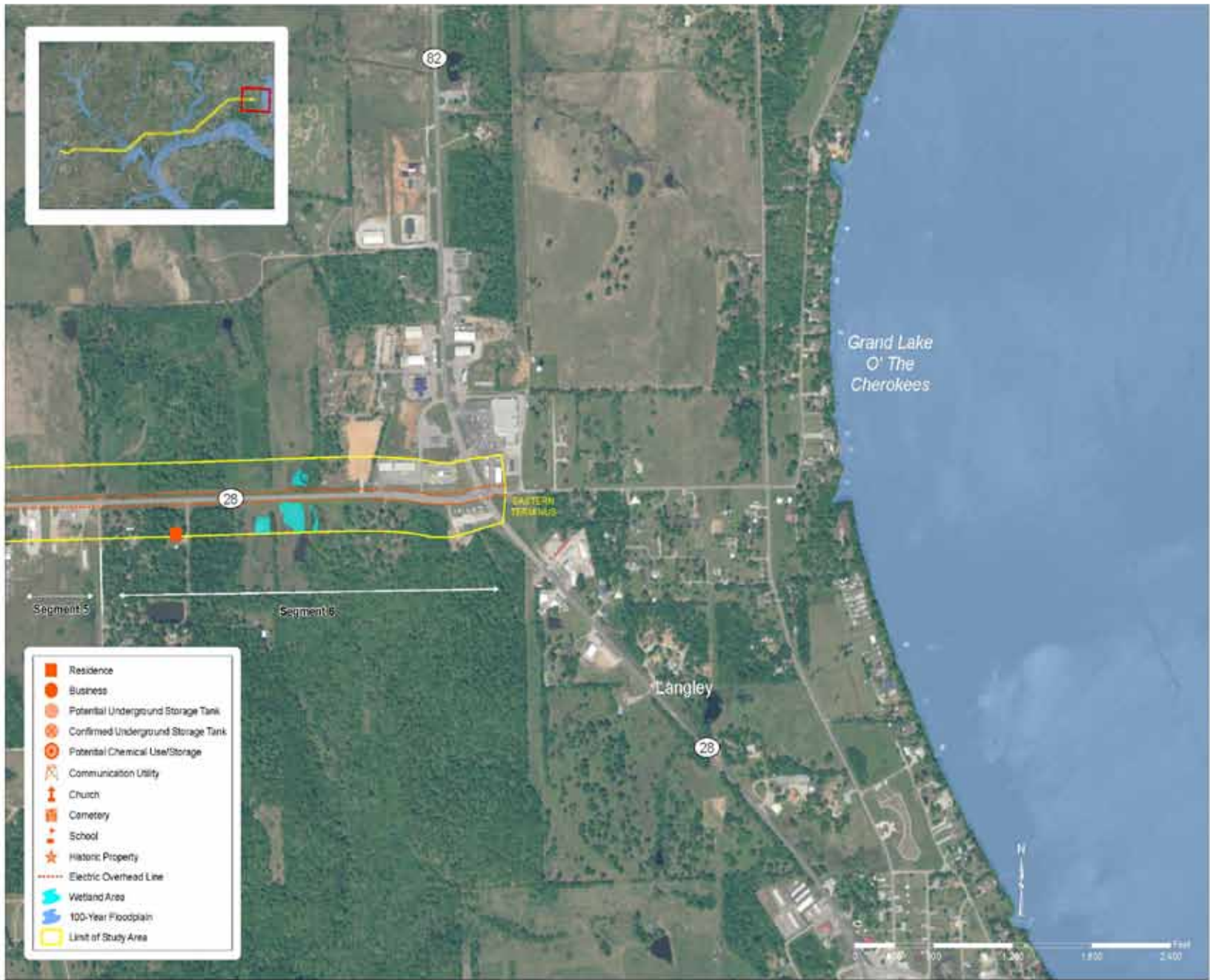


Figure 18: **Constraints Map**
 Document Title: Environmental Assessment
 Client: Oklahoma Department of Transportation
 Project: SH 28, Acar to Langley

Date	7/22/2010
Scale	As Shown
Designed By	DA
Approved By	DA
Drawn By	TS

Project Number	4050700301
Figure Number	7 OF 8



- Residence
- Business
- Potential Underground Storage Tank
- Confirmed Underground Storage Tank
- Potential Chemical Use/Storage
- ⚡ Communication Utility
- ⛪ Church
- ⚰ Cemetery
- ⚪ School
- ★ Historic Property
- Electric Overhead Line
- Wetland Area
- 100-Year Floodplain
- Limit of Study Area

Figure Title:	Constraints Map
Document Title:	Environmental Assessment
Client:	Oklahoma Department of Transportation
Project:	SH 28, Acar to Langley

Date:	7/22/2010
Scale:	As Shown
Designed By:	DA
Approved By:	DA
Drawn By:	TS

Project Number:	4050700301
Figure Number:	8 OF 8



Current Conditions

Information about the current conditions of the road today.

[HTTP://WWW.ODOT.ORG/MEETINGS/OTHER.PHP](http://www.odot.org/meetings/other.php)





105750 SR-028 04916 01

5 1 1

07/10/2006

5.990

44.5







ROCK CREEK BRIDGE





BIG CABIN CREEK BRIDGE

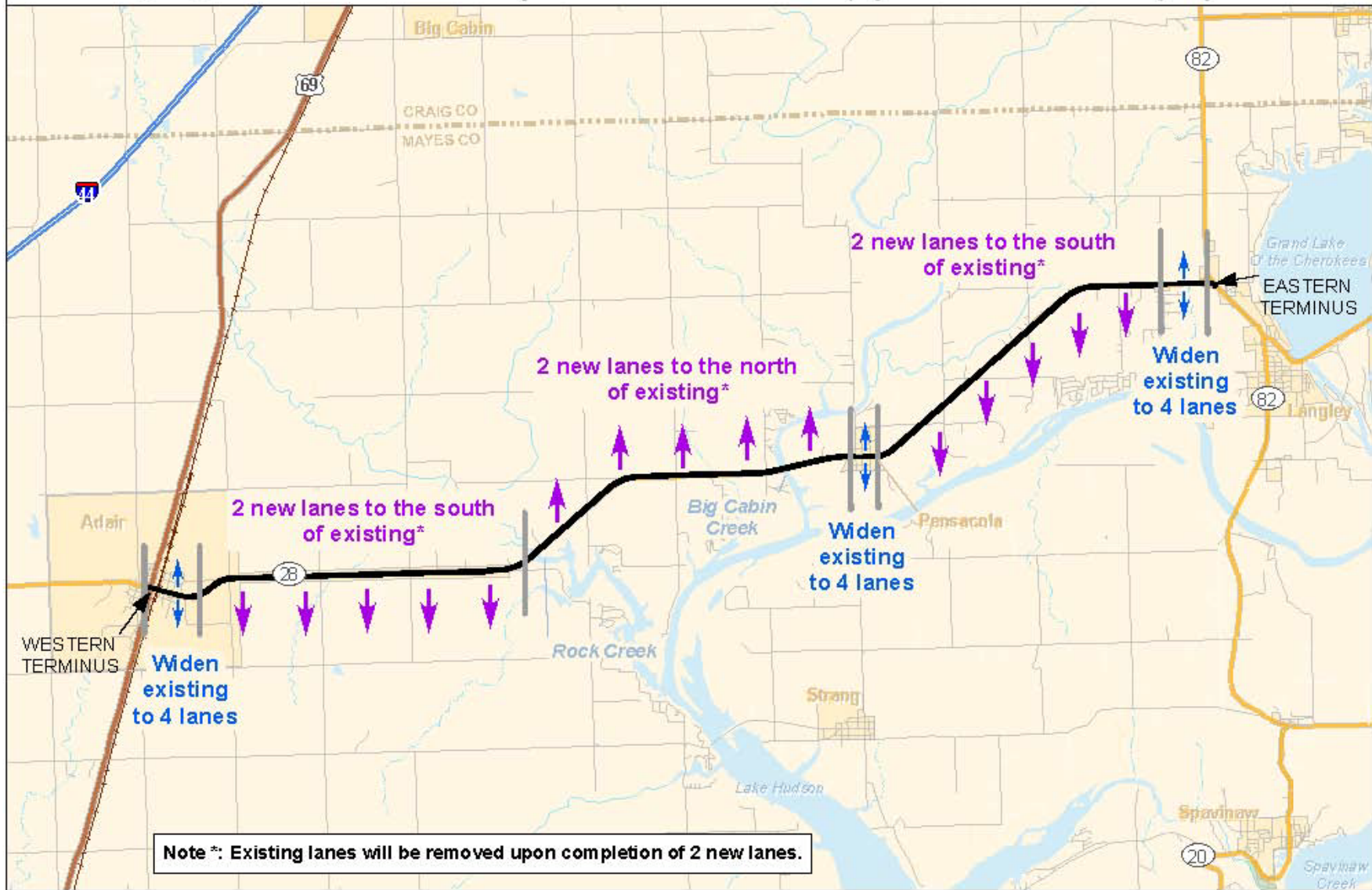
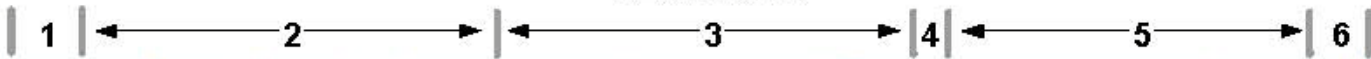
Introduction to the Project

Information about the location and the projects.

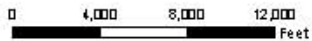
[HTTP://WWW.ODOT.ORG/MEETINGS/OTHER.PHP](http://www.odot.org/meetings/other.php)



SEGMENTS



Note *: Existing lanes will be removed upon completion of 2 new lanes.



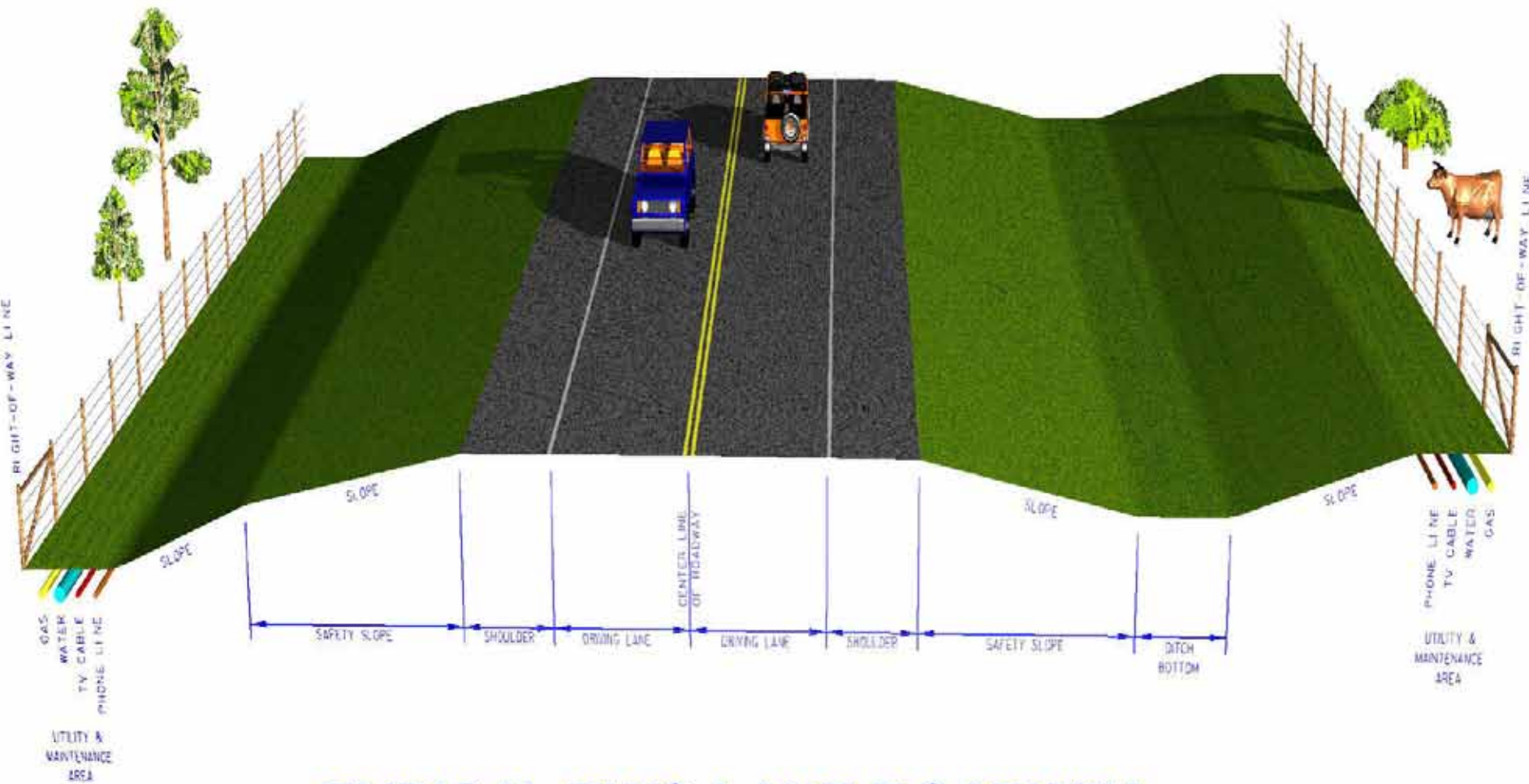
STATE HIGHWAY 28 PREFERRED ALTERNATIVE



SH 28 SEGMENT DESCRIPTIONS

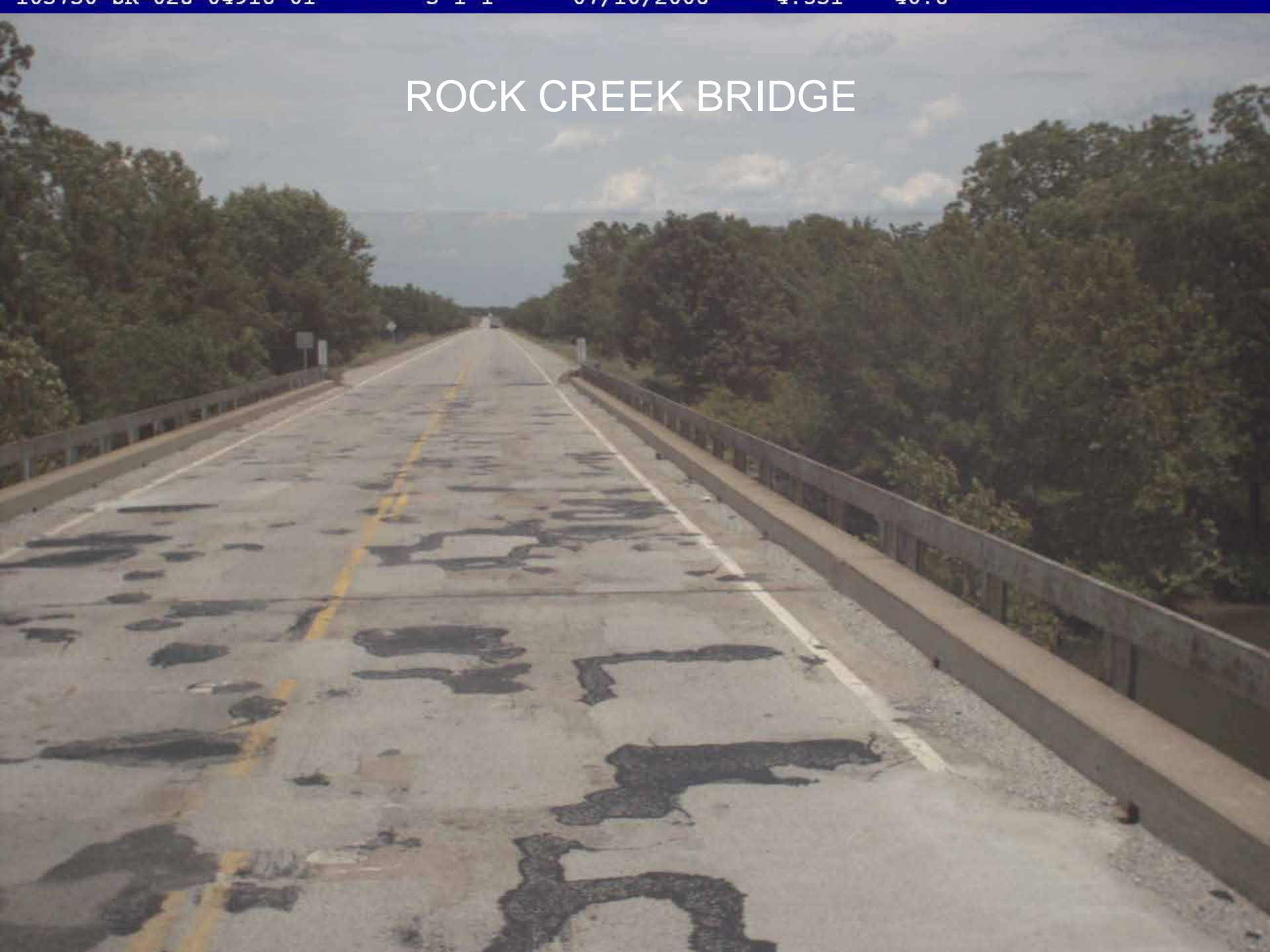
Segment	Description
1	0.5 miles long; junction of US 69 and SH 28 in Adair to Chouteau Street (a.k.a. Warrior Road)
2	3.5 miles long; Chouteau Street to just west of Rock Creek Bridge, near the junction of SH 28 and E0400
3	3.5 miles long; just west of the SH 28/E0400 junction to Rogers Avenue in Pensacola
4	0.25 miles long; Rogers Avenue to McClinock Avenue in Pensacola
5	3.5 miles long; McClinock Avenue to NS 4455
6	0.6 miles long; NS 4455 to the junction of SH 28 and SH 82 in Langley





TYPICAL TWO LANE ROADWAY

ROCK CREEK BRIDGE





FOUR LANE CURB & GUTTER



Right of Way

[HTTP://WWW.ODOT.ORG/MEETINGS/OTHER.PHP](http://www.odot.org/meetings/other.php)



QUESTIONS?

Questions or comments about the project.

[HTTP://WWW.ODOT.ORG/MEETINGS/OTHER.PHP](http://www.odot.org/meetings/other.php)



THANK YOU

Thank you for attending the Oklahoma Department of Transportations Public Involvement Hearing. Please remember to turn in your comment forms before you leave, or fill it out online before the deadline to help save paper!