

September 24, 2007

# *Public Meeting*



*I-35 South*

*Environmental Assessment*

*North End of I-35 / SH 9W Interchange  
Ramps North to 1/2 Mile North of Main  
Street in Norman*





# *I-35 South Environmental Assessment*

## *Introductions*

- *ODOT*
- *Benham*
- *FHWA*





# I-35 South Environmental Assessment

## Project Staff

### ODOT

- *David Streb, Director of Engineering*
- *Paul Rachel, Division III Engineer*
- *Ron Brown, Division III Assistant Engineer*
- *Tim Tegeler, Roadway Division Engineer*
- *Bob Rusch, Bridge Division Engineer*
- *Dawn Sullivan, Environmental Division Engineer*
- *Siv Sundaram, Environmental Division Assistant Engineer*
- *Kevin Bryan, Project Management*
- *Chris Bohannon, Right-of-Way*
- *Craig Moody, Environmental*
- *Scott Stegmann, Environmental*

### BENHAM

- *Ron Weltzheimer, Engineering*
- *Duane Kranz, Engineering*
- *Ken Morris, Traffic*
- *Aruna Mathuranayagam, Traffic*
- *Diane Abernathy, Environmental*
- *Terry McFall, Environmental*





# *I-35 South Environmental Assessment*

## *Meeting Purpose*

- *Provide Project Information*
- *Obtain Input / Feedback*



# *I-35 South Environmental Assessment*

## *The Roadway Improvement Process*

- *Establish Project within ODOT*
- *Complete Environmental Process*
- *Design Project*
- *Acquire Right-of-Way*
- *Relocate Utilities*
- *Construct Project*

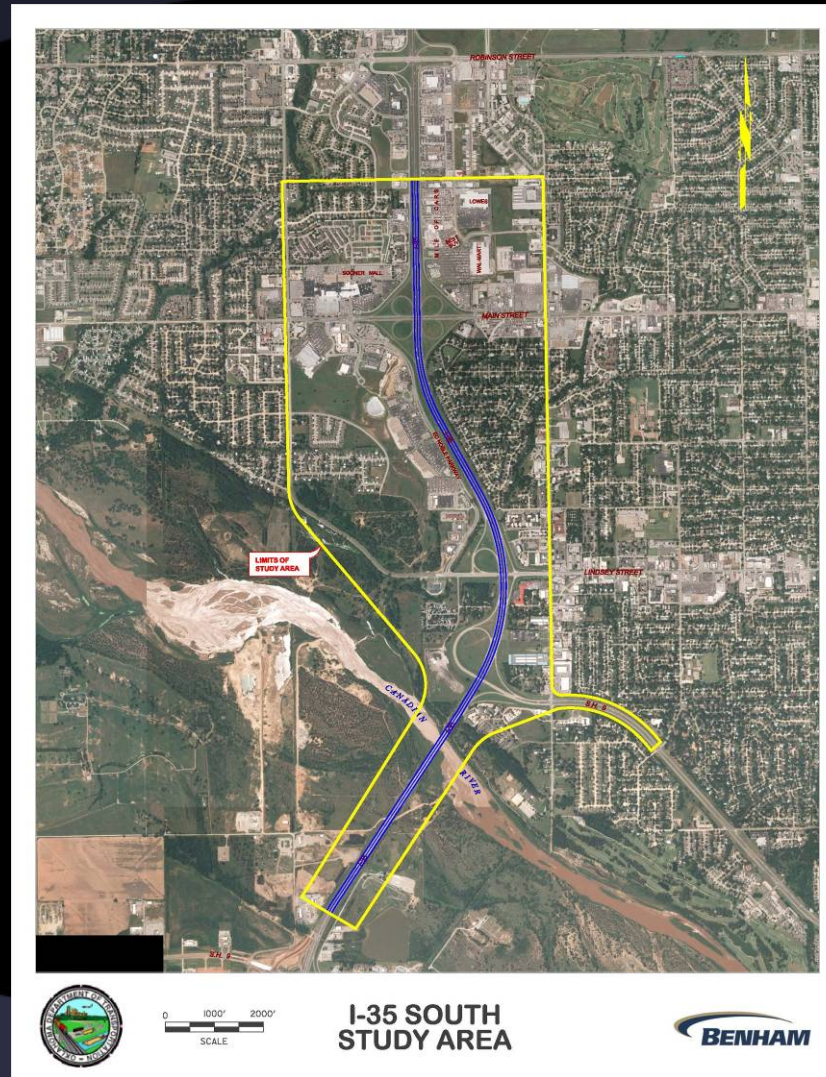


# *I-35 South Environmental Assessment*

## *Project History*

- *1990 – Approved Environmental Assessment*
- *Time & New Development*
- *New Environmental Assessment*

# I-35 South Environmental Assessment



*Study Area*



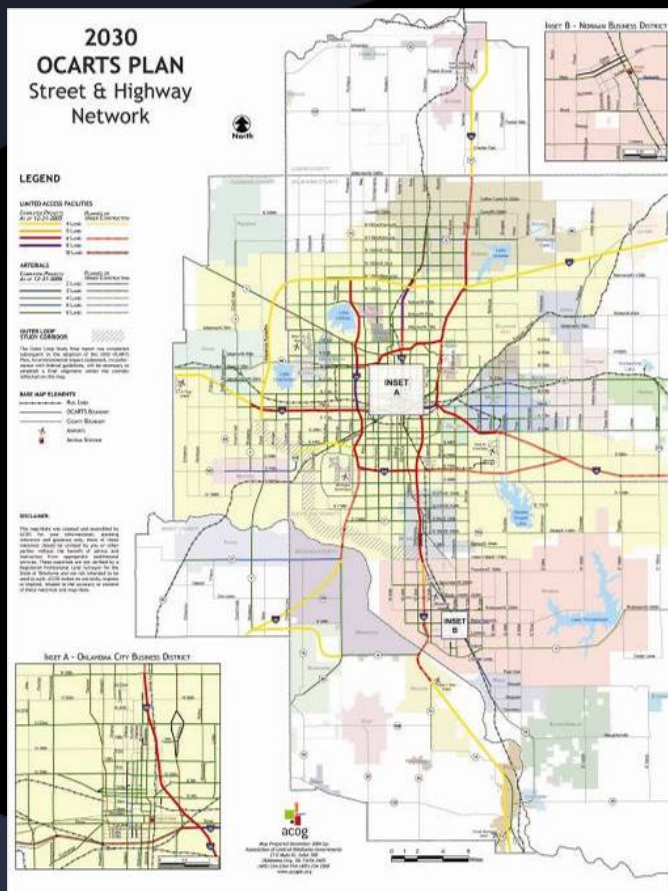
0 1000' 2000'  
SCALE

**I-35 SOUTH  
STUDY AREA**





# I-35 South Environmental Assessment



- **Increase Safety**
- **Provide Additional Capacity**
- **Implement OCART Study Recommendations**

**Project Purpose & Need**







## ***I-35 South Environmental Assessment***

- ***Expand I-35 to 6 Lanes North of Canadian River Bridge***
- ***Reconstruct SH 9E, Lindsey, & Main Interchanges***

***Proposed  
Improvements***

# I-35 South Environmental Assessment



## NEPA Process

- **National Environmental Policy Act**
- **Decision Making Process**





# ***I-35 South Environmental Assessment***

## ***NEPA Process***

- ***Minimize Social, Environmental, & Economic Impacts of the Project***
- ***Solicit Input from Federal, Tribal, State, Local Agencies, & Public***
- ***Collect Environmental Data***
- ***Estimate Construction, Right-of-Way, & Utility Costs***
- ***Evaluate Data & Costs to Select Preferred Improvements***



# *I-35 South Environmental Assessment*

- *Purpose & Need for Project*
- *Alternatives*
- *Affected Environment*
- *Possible Environmental Consequences*
- *Comments & Coordination / Public Involvement*
- *Engineering / Design / Drainage Concerns*
- *Accidents / Safety Concerns*

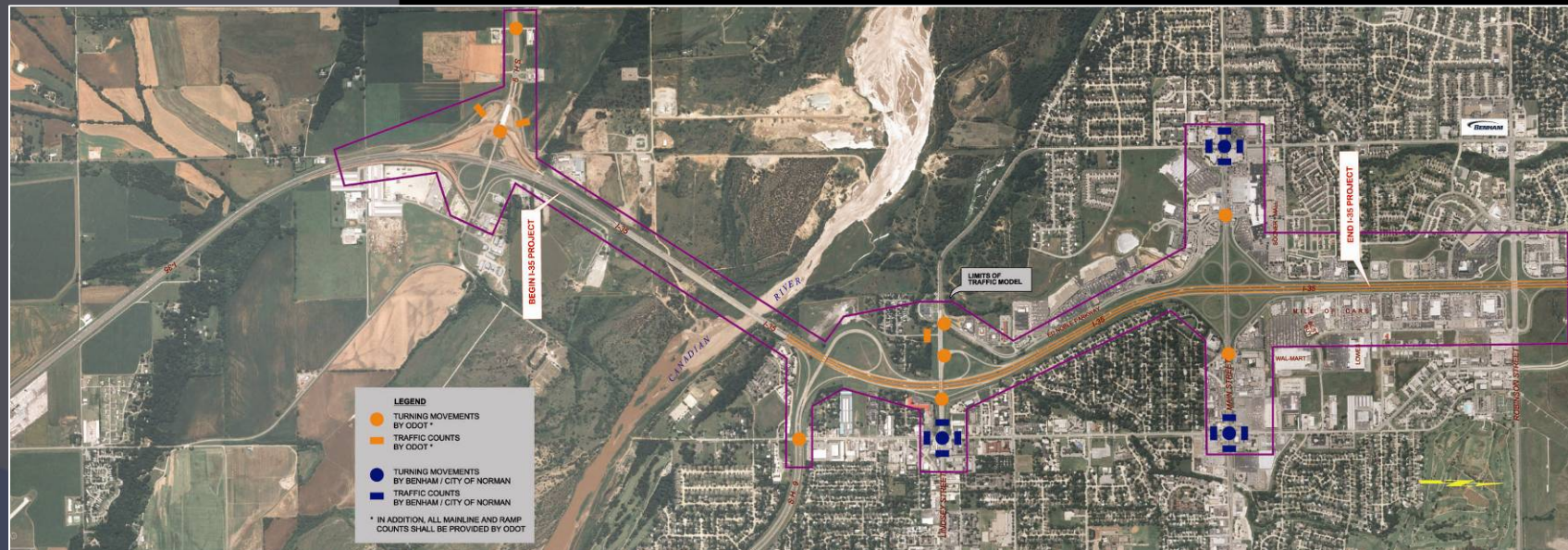
*Items  
Considered  
During Project  
Development*



# I-35 South Environmental Assessment

## Traffic Study

- Study Area
- Counts / Turning Movements
- Future Traffic Demand



# I-35 South Environmental Assessment



*Roadway*

- *I-35: 6-lane Facility*



# I-35 South Environmental Assessment



## Interchange

### ■ *Alternative Development*





## ***I-35 South Environmental Assessment***

### ***Public Participation Program***

- ***Initial meetings with City of Norman and key public organizations have been held.***
- ***1<sup>st</sup> Public Meeting      September 24, 2007***
- ***2<sup>nd</sup> Public Meeting      Fall 2008***
- ***Public Hearing              Late 2008***  
*After the Public Hearing, the EA will be finalized and submitted to FHWA for approval.*





## ***I-35 South Environmental Assessment***

### ***Public Participation Opportunities***

- ***Mr. Steve Lewis, City Manager, City of Norman***
- ***Mr. Richard Stawicki, Ward 2 Councilmember, Norman City Council***
- ***Mr. Hal Ezell, Ward 3 Councilmember, Norman City Council***
- ***Mr. Dan Quinn, Ward 8 Councilmember, Norman City Council***
- ***Ms. Anna-Mary Suggs, Executive Director, Norman Chamber of Commerce***
- ***Mr. Drew Norlin, Normandy Park National Night Out Organization***



# I-35 South Environmental Assessment

## Information Sources

- **Web Address:**  
<http://www.okladot.state.ok.us/meetings/index.htm>
- **Scott Stegmann – ODOT**  
Phone: 405.522.8014  
200 NE 21<sup>st</sup> Street  
Oklahoma City, OK 73105  
E-mail: [sstegmann@ODOT.org](mailto:sstegmann@ODOT.org)
- **Diane Abernathy – Benham**  
Phone: 405.701.3167  
3700 W. Robinson, Ste. 200  
Norman, OK 73072  
E-mail: [diane.abernathy@benham.com](mailto:diane.abernathy@benham.com)







*Questions  
&  
Answers*



*Thank you!*

