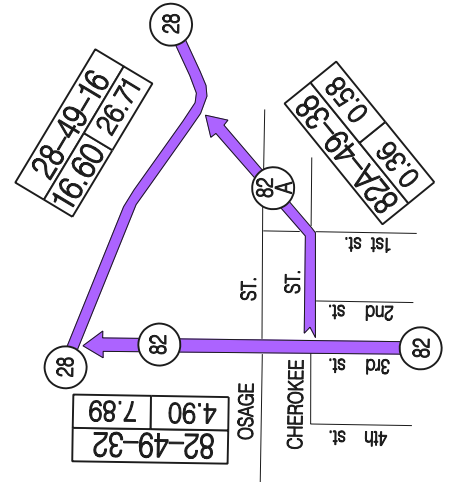
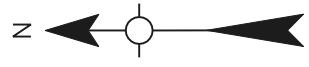
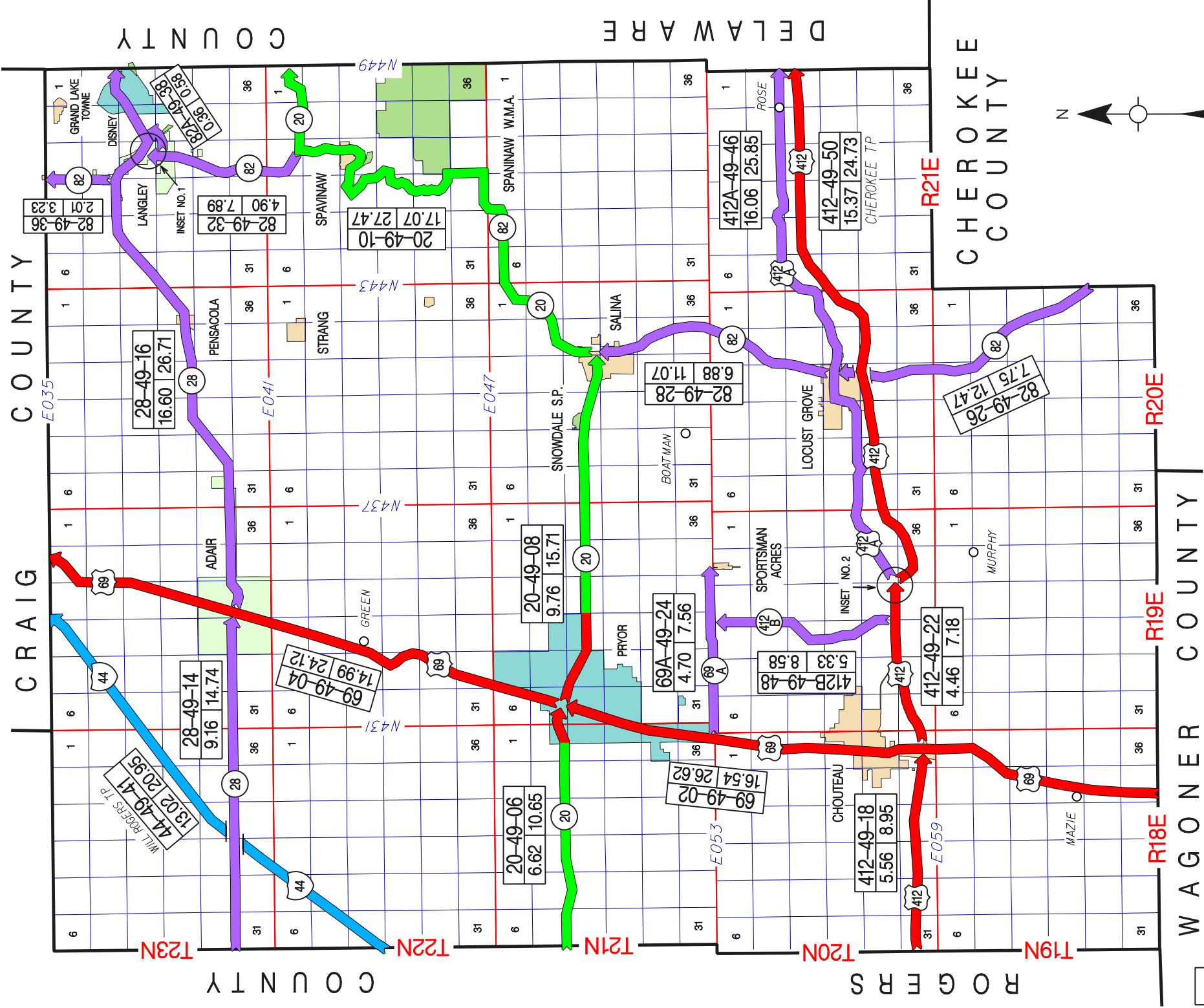


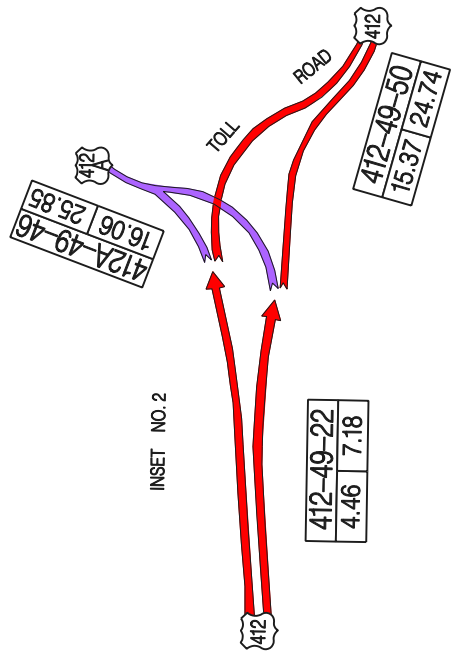
**OKLAHOMA DEPARTMENT OF TRANSPORTATION — CONTROL SECTION LOG ---- MAYES COUNTY**

CONTROL	ROUTE	LENGTH	STARTING DESCRIPTION	DIRECTION	ENDING DESCRIPTION	NOTES
4902	US 69	16.54	WAGONER COUNTY LINE	NORTHERLY	JCT. SH 20(GRAHAM AVE & MILL ST)IN PRYOR	
4904	US 69	14.99	JCT. SH 20(GRAHAM AVE & MILL ST)IN PRYOR	NORTHERLY	CRAIG COUNTY LINE	
4906	SH 20	6.62	ROGERS COUNTY LINE	EASTERLY	JCT. US 69(MILL ST & GRAHAM AVE)IN PRYOR	
4908	SH 20	9.76	JCT. US 69(MILL ST & GRAHAM AVE)IN PRYOR	EASTERLY	JCT. SH 82 IN SALINA	
4910	SH 20	17.07	JCT. SH 82 IN SALINA	NORTHEASTERLY	DELAWARE COUNTY LINE	
4914	SH 28	9.16	ROGERS COUNTY LINE	EASTERLY	JCT. US 69(MAYS ST & MAIN ST)IN ADAIR	
4916	SH 28	16.60	JCT. US 69(MAYS ST & MAIN ST)IN ADAIR	EASTERLY	DELAWARE COUNTY LINE(W. SIDE STR.)	
4918	US 412	5.56	ROGERS COUNTY LINE	EASTERLY	JCT. US 69, S. OF CHOUTEAU(E. SIDE STR.)	
4922	US 412	4.46	JCT. US 69 S. OF CHOUTEAU	EASTERLY	JCT US 412 A	
4924	SH 69A	4.70	JCT. US 69, S. OF PRYOR	EASTERLY	4.7 MI. EAST OF US 69	
4926	SH 82	7.75	CHEROKEE COUNTY LINE (CO RD N44300)	NORTHERLY	JCT. US 412A E. EDGE OF LOCUST GROVE	
4928	SH 82	6.88	JCT. US 412A E. EDGE OF LOCUST GROVE	NORTHERLY	JCT. SH 20(FERRY ST)IN SALINA	
4932	SH 82	4.90	JCT. SH 20, N. OF SPAVINAW	NORTHERLY	JCT. SH 28 IN LANGLEY	
4936	SH 82	2.01	JCT. SH 28, NW OF LANGLEY	NORTHERLY	CRAIG COUNTY LINE	REINVENTORIED 2005 (2.12 MI. BEFORE)
4938	SH 82A	0.36	JCT. SH 82(3RD ST & CHEROKEE AVE)IN LANGLEY	NORTHEASTERLY	JCT. SH 28 AT GRAND RIVER DAM	
4941	IS 44	13.02	ROGERS COUNTY LINE	NORTHEAST (TOLL ROAD)	CRAIG COUNTY LINE	WILL ROGERS T.P. (2005 MILEAGE 13.00 MI.)
4946	US 412A	16.06	JCT US 412 E. OF CHOUTEAU	EASTERLY	DELAWARE COUNTY LINE	REALIGNMENT 2002
4948	SH 412B	5.33	JCT US 412 E. OF CHOUTEAU	NORTH	JCT SH 69A S. OF PRYOR	
4950	US 412	15.37	JCT US 412	EASTERLY	DELAWARE COUNTY LINE	CHEROKEE TURNPIKE

**177.14 TOTAL COUNTY MILEAGE**



INSET NO. 1



INSET NO. 2