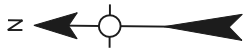
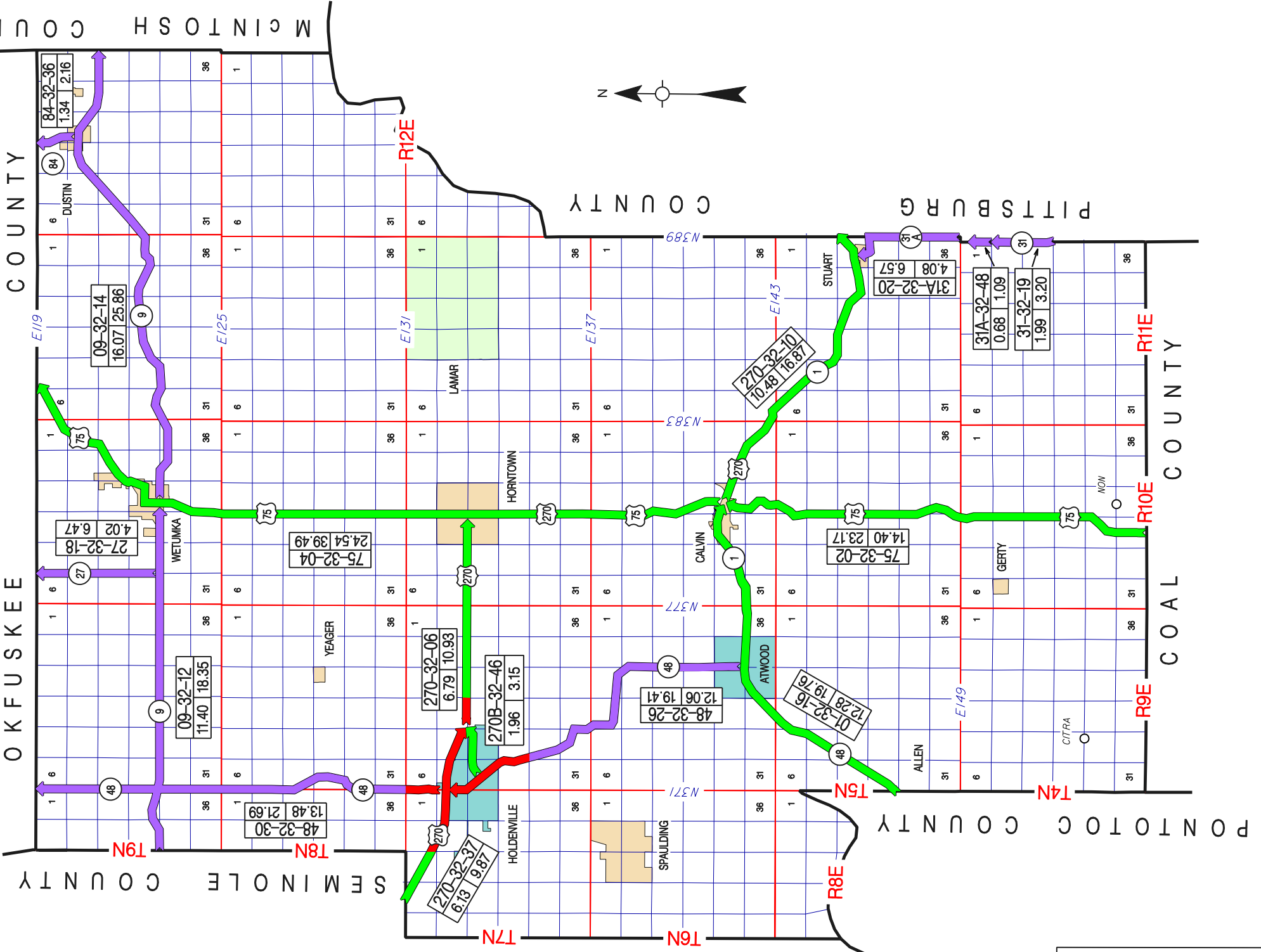


OKLAHOMA DEPARTMENT OF TRANSPORTATION — CONTROL SECTION LOG ---- HUGHES COUNTY

CONTROL	ROUTE	LENGTH	STARTING DESCRIPTION	DIRECTION	ENDING DESCRIPTION	NOTES
3202	US 75	14.40	COAL COUNTY LINE	NORTHERLY	JCT. US 270 E. OF CALVIN (N. SIDE STR)	
3204	US 75	24.54	JCT. US 270 E. OF CALVIN(N. SIDE STR)	NORTHERLY	OKFUSKEE COUNTY LINE	
3206	US 270	6.79	JCT. US 270 BUS. E. OF HOLDENVILLE (E. LEG)	EASTERLY	JCT. US 75, E. OF HOLDENVILLE	
3210	US 270	10.48	JCT. US 75, E. OF CALVIN (E. SIDE STR.)	EASTERLY	PITTSBURG COUNTY LINE	
3212	SH 9	11.40	SEMINOLE COUNTY LINE	EASTERLY	JCT. US 75(MAIN ST)IN WETUMKA	OFFSET ALIGNMENT 2006-MILEAGE SAME
3214	SH 9	16.07	JCT. US 75(MAIN ST) IN WETUMKA	NORTHEASTERLY	MCINTOSH COUNTY LINE	
3216	SH 1	12.28	PONTOTOC COUNTY LINE	NORTHEASTERLY	JCT. US 75 E. OF CALVIN(E. SIDE STR)	
3218	SH 27	4.02	JCT. SH 9 (W. OF WETUMKA)	NORTHERLY	OKFUSKEE COUNTY LINE	
3219	SH 31	1.99	PITTSBURG COUNTY LINE	NORTHERLY	SH 31A	
3220	SH 31A	4.08	HUGHES/PITTSBURG COUNTY LINE	NORTHWESTERLY	JCT. US 270 N. OF STUART	
3226	SH 48	12.06	JCT. SH 1 AT ATWOOD	NORTHERLY	JCT. US 270 N. EDGE OF HOLDENVILLE	
3230	SH 48	13.48	JCT. US 270 N. EDGE OF HOLDENVILLE	NORTHERLY	OKFUSKEE COUNTY LINE	
3236	SH 84	1.34	JCT. SH 9(SPEER ST & BROADWAY AVE)IN DUSTIN	NORTHERLY	OKFUSKEE COUNTY LINE	
3237	US 270	6.13	SEMINOLE COUNTY LINE	SOUTHEASTERLY	JCT. US 270 BUS. E. OF HOLDENVILLE	
3246	US 270B	1.96	JCT. SH 48(MAIN & HINCKLEY STS)IN HOLDENVILLE	EASTERLY	JCT. US 270 E. OF HOLDENVILLE	
3248	SH 31A	0.68	JCT SH 31 PITTSBURG COUNTY LINE	NORTHERLY	PITTSBURG COUNTY LINE	

141.70 TOTAL COUNTY MILEAGE



SEMINOLE COUNTY

OKFUSKEE COUNTY

PITTSBURG COUNTY

PONTOTOC COUNTY

COAL COUNTY

MCGINTOSH COUNTY

T8N

T9N

T6N

T7N

T8N

T9N

T6N

T7N

T8N

T9N

T6N

T7N

T8N

T9N

T6N

T7N

T8N

T9N

T6N

T7N

T8N

T9N

T6N

T7N

T8N

T9N

T6N

T7N

T8N

T9N

T6N

T7N

T8N

T9N

T6N

T7N

T8N

T9N

T6N

T7N

T8N

T9N

T6N

T7N

E119

E125

E131

E137

E143

E149

N371

N377

N383

N389

R12E

R9E

R10E

R11E

R8E

T5N

T6N

T7N

T8N

T9N

T6N

T7N

T8N

T9N

T6N

T7N

T8N

T9N

T6N

T7N

T8N

T9N

T6N

T7N

T8N

T9N

T6N

T7N

T8N

T9N

T6N

T7N

T8N

T9N