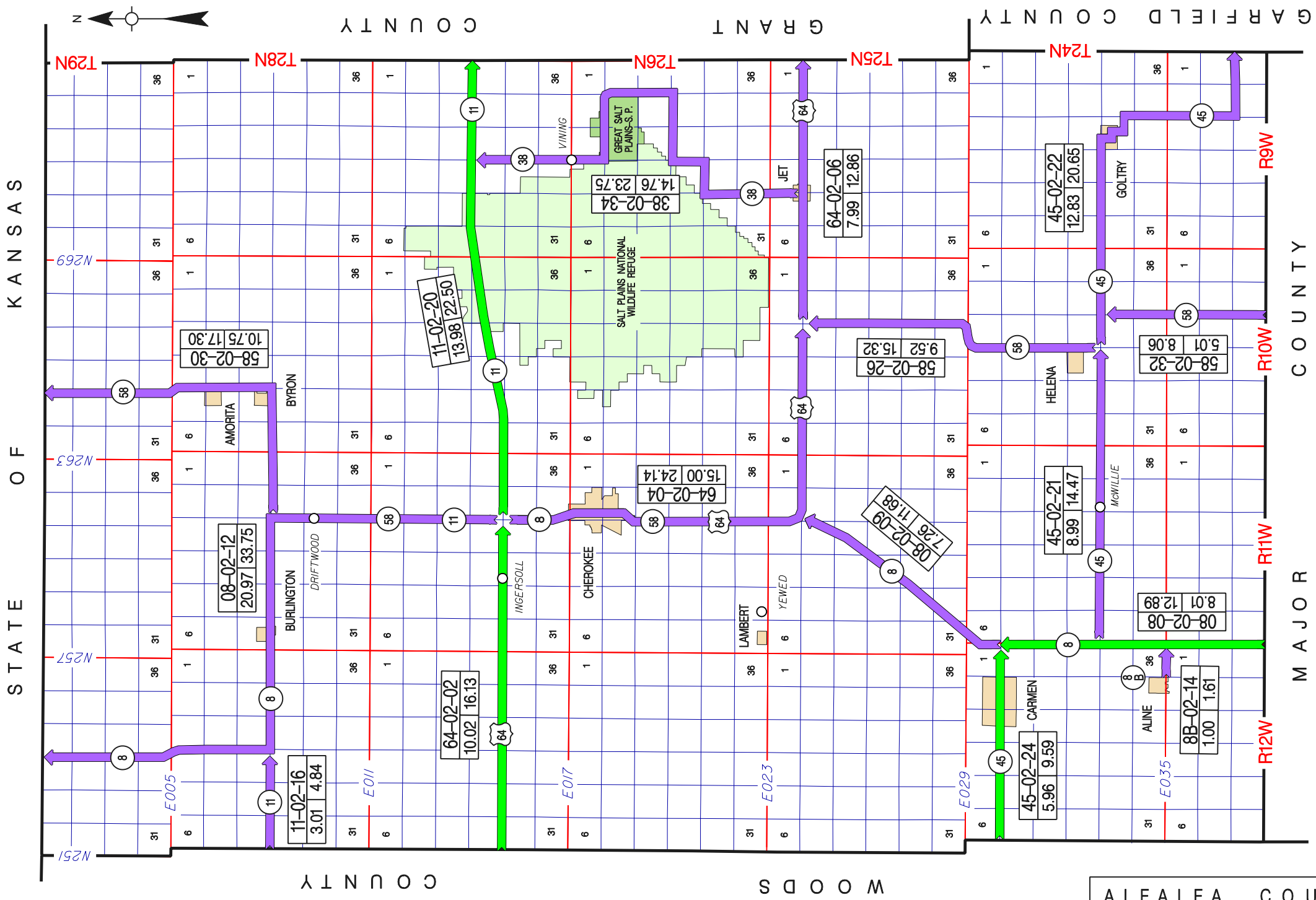


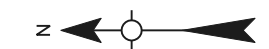
**OKLAHOMA DEPARTMENT OF TRANSPORTATION — CONTROL SECTION LOG ---- ALFALFA COUNTY**

CONTROL	ROUTE	LENGTH	STARTING DESCRIPTION	DIRECTION	ENDING DESCRIPTION	NOTES
0202	US 64	10.02	WOODS COUNTY LINE	EASTERLY	JCT. SH 11 & SH 8 E. OF INGERSOLL	
0204	US 64	15.00	JCT. SH 11 & SH 8 E. OF INGERSOLL	SOUTH AND EASTERLY	JCT. SH 58 W. OF JET	AGENDA ITEM (15.11 MILES BEFORE)
0206	US 64	7.99	JCT. SH 58 W. OF JET	EASTERLY	GRANT COUNTY LINE	
0208	SH 8	8.01	MAJOR COUNTY LINE S. OF ALINE	NORTHERLY	JCT. SH 45 E. OF CARMEN	
0209	SH 8	7.26	JCT. SH 45 E. OF CARMEN	NORTHEASTERLY	JCT. US 64 S. OF CHEROKEE	
0212	SH 8	20.97	JCT. US 64 N. OF CHEROKEE	NORTHWESTERLY	KANSAS STATE LINE	
0214	SH 8B	1.00	E. EDGE OF ALINE	EASTERLY	JCT. SH 8 E. OF ALINE	
0216	SH 11	3.01	WOODS COUNTY LINE	EASTERLY	JCT. SH 8 N., W. OF BURLINGTON	
0220	SH 11	13.98	JCT. US 64 N. OF CHEROKEE	EASTERLY	GRANT COUNTY LINE	OFFSET ALIGNMENT 2006
0221	SH 45	8.99	JCT. SH 8 N.E. OF ALINE	EASTERLY	JCT. SH 58 S. OF HELENA	
0222	SH 45	12.83	JCT. SH 58 S. OF HELENA	EAST AND SOUTHERLY	GARFIELD COUNTY LINE	
0224	SH 45	5.96	WOODS COUNTY LINE	EASTERLY	JCT. SH 8 E. OF CARMEN	
0226	SH 58	9.52	JCT. SH 45 S. OF HELENA	NORTHERLY	JCT. US 64 W. OF JET	
0230	SH 58	10.75	JCT. SH 8 W. OF BYRON	EAST AND NORTHERLY	KANSAS STATE LINE	
0232	SH 58	5.01	MAJOR COUNTY LINE	NORTHERLY	JCT. SH 45 S.E. OF HELENA	
0234	SH 38	14.76	JCT. US 64(MAIN ST. & FIFTH ST.) IN JET	NORTHERLY	JCT. SH 11	

**155.06 TOTAL COUNTY MILEAGE**



STATE OF KANSAS



WOODS COUNTY

GRANT COUNTY

GARFIELD COUNTY

MAJOR COUNTY