

10-68-14
2.04 3.28

100-68-05
0.71 1.14

10A-68-26
5.30 8.53

100-68-24
12.10 19.47

82-68-16
11.35 18.27

10-68-29
4.14 6.66

64-68-06
16.60 26.71

82-68-30
0.70 1.13

40-68-22
17.62 28.36

59-68-02
10.35 16.66

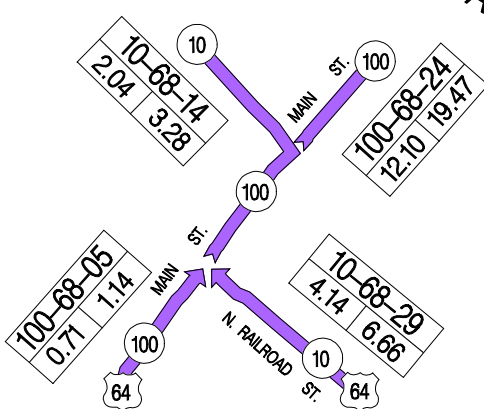
64-68-10
21.91 35.26

40-68-23
23.02 37.05

141-68-20
8.24 13.26

64B-68-18
11.39 18.33

64D-68-31
3.65 5.87



INSET NO.1