

STATE OF OKLAHOMA
DEPARTMENT OF TRANSPORTATION

OKLAHOMA DEPARTMENT OF TRANSPORTATION

CONSTRUCTIBILITY
REVIEW PLANS

JAN. 26, 2009

PLAN OF PROPOSED

STATE HIGHWAY

FEDERAL AID PROJECT NO. STPY-120B(165)EC

STREAM AND WETLAND MITIGATION PLANS

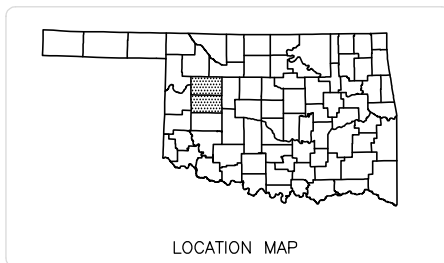
STATE HIGHWAY 34

CUSTER & DEWEY COUNTY

JOB PIECE NO. 18779(10)

INDEX OF SHEETS

TITLE SHEET	1
SUMMARY OF PAY QUANTITIES	2
PLANTING PLAN BRIDGE A	3
PLANTING PLAN BRIDGE B	4
PLANTING PLAN RCB	5
PLANTING DETAIL SHEET	6

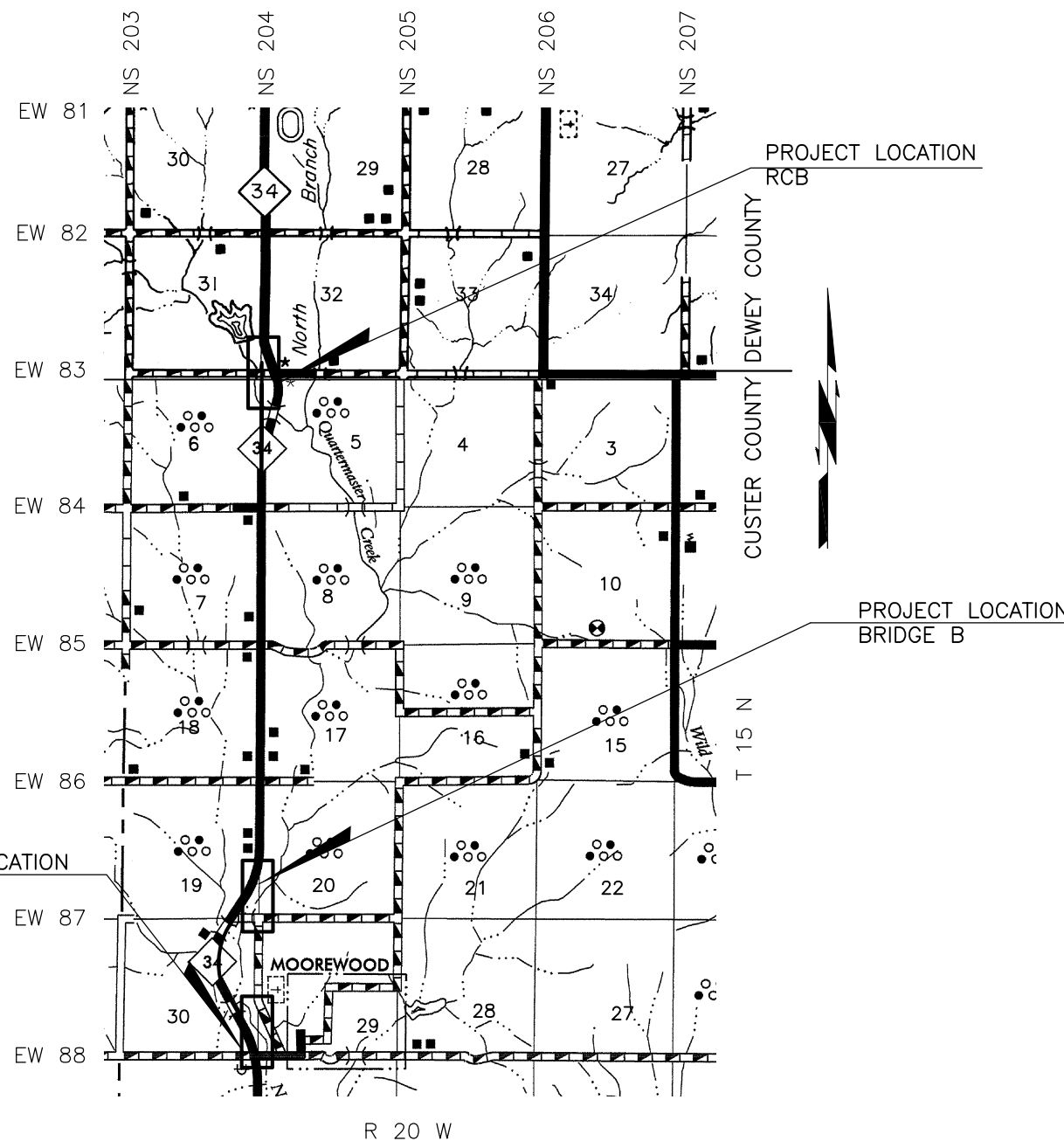


SCALES
PLAN SEE SHEET SCALE
LAYOUT MAP 1" = 3200'

CONVENTIONAL SYMBOLS

<ul style="list-style-type: none"> ⊗ FIRE HYDRANT ⊠ GAS METER ⊗ GAS VALVE ⊕ GAS VENT ⊙ WATER WELL ⊠ GROUND TRANSFORMER • GUARD POST ☆ LIGHT POLE ⊙ STORM DRAIN MANHOLE ⊙ ELECTRIC MANHOLE ⊙ SANITARY SEWER MANHOLE ⊙ TELEPHONE MANHOLE ⊙ TRANSFORMER POLE ⊙ POWER POLE ⊙ SANITARY SEWER CLEANOUT ⊕ SIGN ⊙ SPRINKLER HEAD ⊙ SPRINKLER VALVE ⊙ TELEPHONE RISER ⊠ TRAFFIC/ELECTRIC PULL BOX ⊠ WATER METER ⊗ WATER VALVE BOX ⊠ HEADSTONE 	<ul style="list-style-type: none"> —EUG— ELECTRIC UNDERGROUND LINE —O— OVERHEAD ELECTRIC LINE —G— GAS LINE —SS— SANITARY SEWER LINE —ST— STORM DRAIN LINE —OVT— OVERHEAD TELEPHONE LINE —TUG— UNDERGROUND TELEPHONE LINE —CATV— UNDERGROUND CABLE TV LINE —W— WATER LINE — PROPOSED ROAD — CURB AND GUTTER — SURFACE DRAINAGE FLOWLINE — RAILROADS — RANGE & TOWNSHIP — SECTION LINES — QUARTER SECTION LINES — FENCES — GROUND LINES — EXISTING ROADS — BASE LINE — GRADE LINES — DRAINAGE STRUCTURES — EXISTING — DRAINAGE STRUCTURES — NEW — PRES. R/W — R/W — R/W — R/W
---	--

1999 OKLAHOMA STANDARD SPECIFICATIONS FOR HIGHWAY CONSTRUCTION—ENGLISH GOVERN, APPROVED BY THE U.S. DEPARTMENT OF TRANSPORTATION, FEDERAL HIGHWAY ADMINISTRATION, SEPTEMBER 21, 1999.



3201 S. BERRY ROAD
NORMAN, OKLAHOMA 73072
(405)307-8378
CERTIFICATE OF AUTHORIZATION NO. 3639
RENEWAL DATE 6-30-10

CASSIDY DOESCHER, P.E. NO. 22540 DATE

THIS DOCUMENT IS PRELIMINARY IN NATURE AND IS NOT FOR A FINAL, SIGNED AND SEALED DOCUMENT.

OKLAHOMA DEPARTMENT OF TRANSPORTATION	DEPARTMENT OF TRANSPORTATION FEDERAL HIGHWAY ADMINISTRATION
DATE APPROVED	DATE APPROVED
BY	BY
CHIEF ENGINEER	DIVISION ADMINISTRATOR
PROJECT NO. STPY-120B(165)EC SHEET NO. 1	
CUSTER\DEWEY COUNTIES	

Z:\0400360\PLANS\MUTOCAD\CONSTRUCTIBILITY REVIEW PLANS\TITLE.DWG 1/12/2009 4:54 PM

FED. ROAD DIST. NO.	STATE	PROJ. NO.	FISCAL YEAR	SHEET NO.	TOTAL SHEETS
	OKLA.	18779(10)			
DESCRIPTION			REVISIONS		DATE

GENERAL CONSTRUCTION NOTES

ALL TREES, BRUSH, AND OTHER DEBRIS THAT MIGHT INTERFERE WITH THE FLOW OF WATER ARE TO BE CLEANED OUT TO THE RIGHT-OF-WAY LINE AT EACH STRUCTURE AND BRIDGE, IN A MANNER APPROVED BY THE ENGINEER. ALL COST TO BE INCLUDED IN THE PRICE BID FOR OTHER ITEMS OF WORK.

THIS PROJECT SHALL BE CONSTRUCTED WITHOUT CLOSING THE EXISTING SECTION LINE ROADS TO LOCAL AND THROUGH TRAFFIC. SEE STANDARD SPECIFICATIONS FOR MAINTENANCE OF LOCAL AND THROUGH TRAFFIC.

THE CONTRACTOR SHALL GET ALL UNDERGROUND UTILITIES CLEARLY IDENTIFIED AND FLAGGED BY CALLING "CALL-OKIE" (1-800-522-6543). THE CONTRACTOR SHALL KEEP CLEAR OF UNDERGROUND UTILITIES WHILE DIGGING. THE LOCATION OF THE TREES MAY BE ADJUSTED TO AVOID CONFLICTS WITH UTILITIES. -CONTACT ENGINEER IF CONFLICTS ARE IDENTIFIED IN THE FIELD.

48 HOURS BEFORE YOU DIG... CALL OKIE 1-800-522-6543

OKLAHOMA ONE-CALL SYSTEM
AN EFFORT HAS BEEN MADE TO LOCATE AND SHOW APPROXIMATE LOCATION OF UNDERGROUND UTILITY LINES. BURIED UTILITIES ARE NOT NECESSARILY SHOWN. IT IS THE CONTRACTOR'S RESPONSIBILITY TO LOCATE AND PRESERVE ALL UTILITY SERVICES. CONTRACTOR IS RESPONSIBLE FOR CONTACTING ALL UTILITY COMPANIES PRIOR TO CONSTRUCTION.

PAY QUANTITY NOTES

- (F-37) MATERIALS REMOVED SHALL NOT BE MEASURED FOR PAYMENT UNDER SECTION 202.06 "UNCLASSIFIED EXCAVATION".
- (F-43) TO BECOME THE PROPERTY OF AND BE DISPOSED OF BY THE CONTRACTOR IN A MANNER APPROVED BY THE ENGINEER.

GENERAL PAY QUANTITY NOTES

- (1) PRICE BID TO INCLUDE COST OF WATERING FOR TREES.
- (2) THE CONTRACTOR IS TO SUPPLY SPECIFIC UNIT PRICES FOR EACH TYPE OF TREE AT THE PRE-WORK CONFERENCE TO ESTABLISH TREE COSTS IN THE EVENT A SUBSTITUTION NEEDS TO BE MADE. SEE SUMMARY OF TREES ON THIS SHEET.
- (3) PRICE BID SHOULD INCLUDE SITE PREPARATION, ALL ITEMS ASSOCIATED WITH PLANTING PROCEDURES, AND SITE MAINTENANCE AS DETAILED IN THE PLANTING DETAIL ON SHEET 6.
- (4) ESTIMATED AT 182 LBS. (24-0-15) PER ACRE OF SEEDING.
- (5) PRICE BID TO INCLUDE COST OF WATERING ESTIMATED AT 200 M-GAL PER ACRE OF SEEDING. THE CONTRACTOR SHALL PROVIDE SUFFICIENT WATER FOR ADEQUATE GRASS GROWTH AS APPROVED BY THE ENGINEER.
- (6) NATIVE GRASS AND FORB MIX TO BE USED IN AREAS DISTURBED AFTER TREE PLANTING OPERATIONS. MIX SHALL CONSIST OF ODOT SELECTED SPECIES. MIXTURE PERCENTAGE SHALL BE DETERMINED BY ODOT. ANY SUBSTITUTION MUST BE APPROVED BY ENGINEER. SEE ADDITIONAL NOTES ON SHEET 6.
- (7) PRICE SHALL INCLUDE REMOVAL OF ALL VEGETATION, FENCE, SIDE DRAINS, RCB CULVERTS AND SIGNS AS DESIGNATED BY THE ENGINEER. WITHIN THE R/W ALL MATERIALS SHALL BE REMOVED AND DISPOSED OF IN A MANNER APPROVED BY THE ENGINEER.

ITEM NUMBER	DESCRIPTION	UNIT	QUANTITY
201 0102	CLEARING AND GRUBBING	L-SUM	1.00
231(A) 4567	TREES, BARE ROOT SEEDLINGS (1)(2)(3)(4)	EA.	4,000.00
231(A) 4567	TREES, CONTAINERIZED, 1-GALLON & 1-QUART (1)(2)(3)(4)	EA.	1,300.00
232(B) 2814	SEEDING METHOD B (5)(6)	AC.	X.XX
234(A) 4407	FERTILIZING (24-0-15) (4)	TON	X.XX
241 2832	MOWING (TOTAL AREA=15.50 AC.)	AC.	15.50
619(A) 0920	REMOVAL OF STR. & OBST. (7)(F-37)(F-43)	LSUM	1.00

ITEM NUMBER	DESCRIPTION	UNIT	QUANTITY
880(J) 8905	CONSTRUCTION TRAFFIC CONTROL	LSUM	1.00

ITEM NUMBER	DESCRIPTION	UNIT	QUANTITY
642 0098	STAKING	LSUM	1.00

ITEM NUMBER	DESCRIPTION	UNIT	QUANTITY
640 1426	FIELD OFFICE	EA.	1.00
641 1552	MOBILIZATION	LSUM	1.00

COMMON NAME	SCIENTIFIC NAME	PLANTING LOCATION	COMMENTS
American Elm	<i>Ulmus americana</i>	Stream Bank Planting	Disease resistant variety only
Black Locust	<i>Robinia pseudoacacia</i> L.	Stream Slope Planting	Oklahoma trees required
Black Walnut	<i>Juglans nigra</i> L.	Stream Bank Planting & Stream Slope Planting (top)	Oklahoma trees required; trees grown in general area preferred
Little Walnut	<i>Juglans microcarpa</i>	Stream Bank Planting	Trees should be grown from seed/stock from the general area only
Black Willow	<i>Salix nigra</i>	Stream Slope Planting (toe)	Planted if no volunteer trees are established. Trees should be grown from seed/stock from the general area only
Bur Oak	<i>Quercus macrocarpa</i>	Stream Bank Planting & Stream Slope Planting (top)	Oklahoma trees required; trees grown in general area preferred
Chinkapin Oak	<i>Quercus muehlenbergii</i>	Stream Bank Planting	Trees should be grown from seed/stock from the general area only
Hackberry	<i>Celtis occidentalis</i>	Stream Bank Planting & Stream Slope Planting (top)	Oklahoma trees required; trees grown in general area preferred
Roughleaf Dogwood	<i>Cornus drummondii</i>	Stream Bank Planting & Stream Slope Planting (top)	Oklahoma trees required; trees grown in general area preferred
Western Soapberry	<i>Sapindus drummondii</i>	Stream Bank Planting & Stream Slope Planting (top)	Trees grown in general area preferred
Chickasaw Plum	<i>Prunus angustifolia</i>	Stream Bank Planting	Oklahoma trees required; trees grown in general area preferred
Pecan	<i>Carya illinoensis</i>	Stream Bank Planting	Trees grown in general area preferred
Cottonwood	<i>Populus deltoides</i>	Stream Bank Planting & Stream Slope Planting (top & toe)	Planted at toe if no volunteer trees are established. Trees should be grown from seed/stock from the general area only.

SEQUENCE OF EVENTS

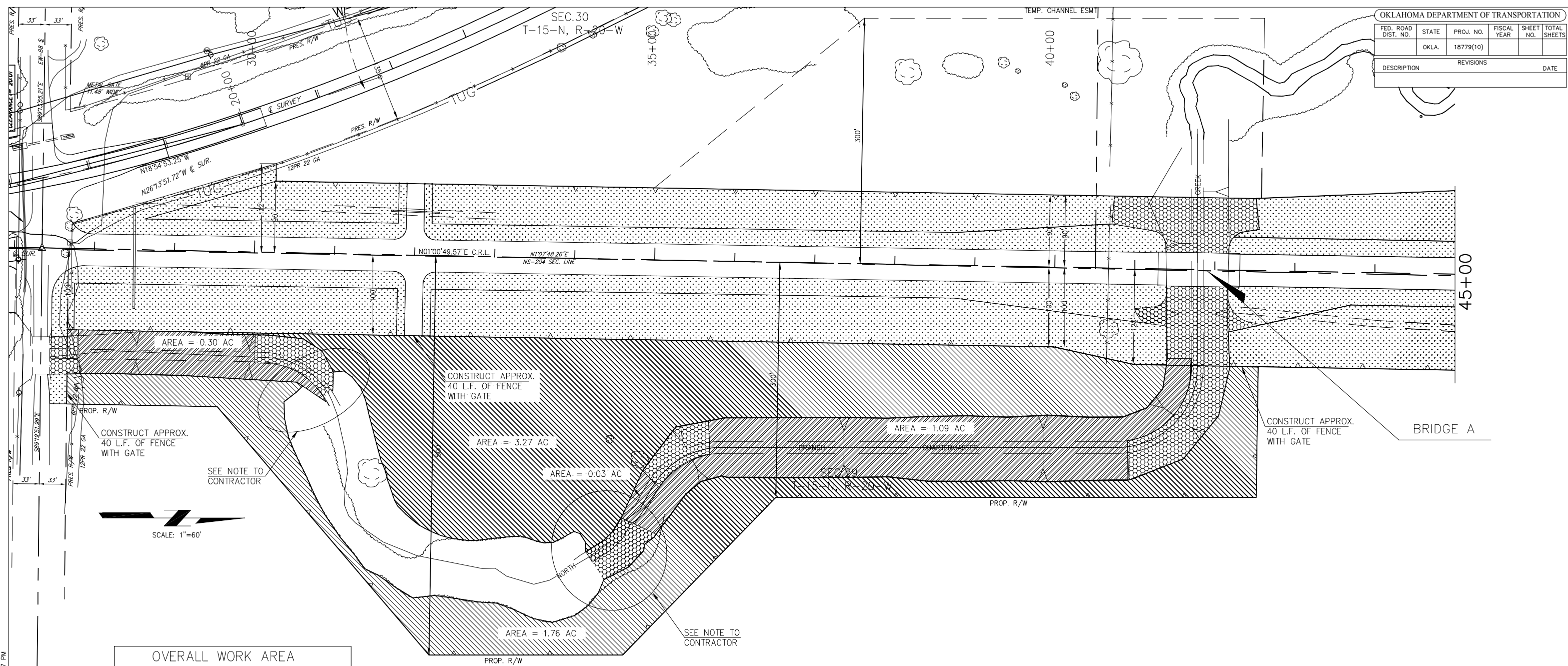
1. COMPLETE SITE PREPARATION OPERATIONS
2. FERTILIZE PLANTING AREAS
3. PLANT, WATER AND MULCH STREAM SLOPE PLANTING AREAS
4. PLANT, WATER AND MULCH STREAM BANK PLANTING AREAS
5. PLANT ODOT MIX BETWEEN BANK PLANTING GROUPS

*SEE PLANTING DETAIL SHEET FOR SPECIFIC PLANTING GUIDELINES

THIS DOCUMENT IS PRELIMINARY IN NATURE AND IS NOT FOR A FINAL, SIGNED AND SEALED DOCUMENT.

DRAWN	AKG		OKLAHOMA DEPARTMENT OF TRANSPORTATION
DESIGN	CD		
CHECKED	CD		
APPROVED	CD		
CREW			
			SUMMARY OF PAY QUANTITIES
			STATE JOB NO. 18779(10)
			SHEET 2

OKLAHOMA DEPARTMENT OF TRANSPORTATION				
FED. ROAD DIST. NO.	STATE	PROJ. NO.	FISCAL YEAR	SHEET TOTAL SHEETS
	OKLA.	18779(10)		
DESCRIPTION		REVISIONS	DATE	



OVERALL WORK AREA	
	STREAM BANK PLANTING (APPROX. 5.03 AC)
	STREAM SLOPE PLANTING (APPROX. 1.42 AC)
	NO TREE OR SHRUB PLANTING ZONE
	RIPRAP (DO NOT DISTURB EXCEPT AS SPECIFIED)

NOTE TO CONTRACTOR:
 EXTEND ALL PLANTING OPERATIONS TO MEET WITH EXISTING MATURE WOODY VEGETATION SPECIES, UNLESS OTHERWISE SPECIFIED.

THIS DOCUMENT IS PRELIMINARY IN NATURE AND IS NOT FOR A FINAL, SIGNED AND SEALED DOCUMENT.

DRAWN		AKG	OKLAHOMA DEPARTMENT OF TRANSPORTATION
DESIGN			
CHECKED			
APPROVED			
CREW			

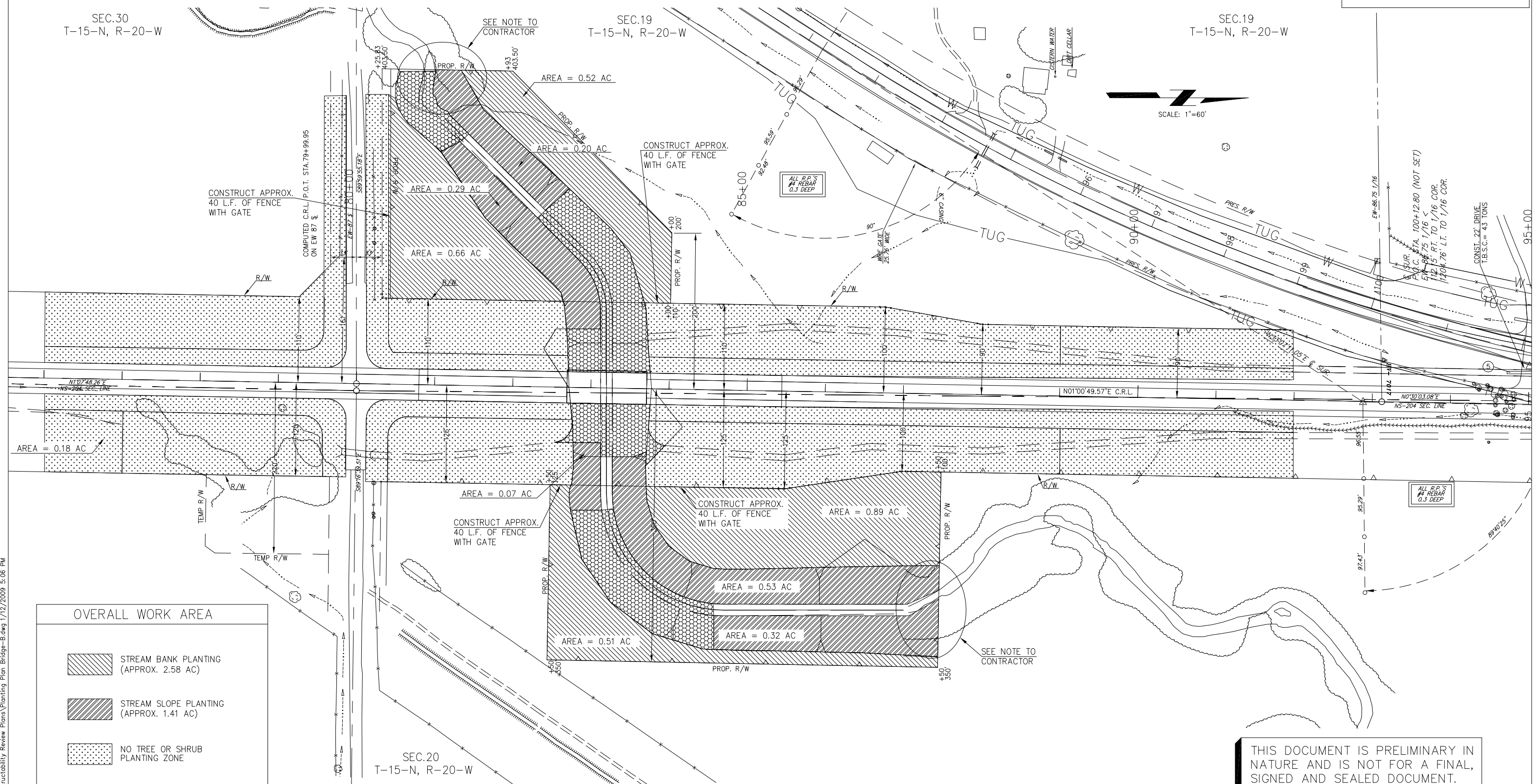
Z:\0400360\Plans\AutoCad\Constructability_Review_Plans\Planting_Plan_Bridge-A.dwg 1/12/2009 5:07 PM

OKLAHOMA DEPARTMENT OF TRANSPORTATION				
FED. ROAD DIST. NO.	STATE	PROJ. NO.	FISCAL YEAR	SHEET TOTAL SHEETS
	OKLA.	18779(10)		
DESCRIPTION		REVISIONS	DATE	

SEC.30
T-15-N, R-20-W

SEC.19
T-15-N, R-20-W

SEC.19
T-15-N, R-20-W



OVERALL WORK AREA

- STREAM BANK PLANTING (APPROX. 2.58 AC)
- STREAM SLOPE PLANTING (APPROX. 1.41 AC)
- NO TREE OR SHRUB PLANTING ZONE
- RIPRAP (DO NOT DISTURB EXCEPT AS SPECIFIED)

NOTE TO CONTRACTOR:
EXTEND ALL PLANTING OPERATIONS TO MEET WITH EXISTING MATURE WOODY VEGETATION SPECIES, UNLESS OTHERWISE SPECIFIED.

THIS DOCUMENT IS PRELIMINARY IN NATURE AND IS NOT FOR A FINAL, SIGNED AND SEALED DOCUMENT.

DRAWN		AKG		OKLAHOMA DEPARTMENT OF TRANSPORTATION	
				PLANTING PLAN BRIDGE "B"	
STATE JOB NO. 18779(10)				SHEET 4	

Z:\0400360\Plans\AutoCad\Constructability_Review_Plans\Planting_Plan_Bridge-B.dwg 1/12/2009 5:06 PM

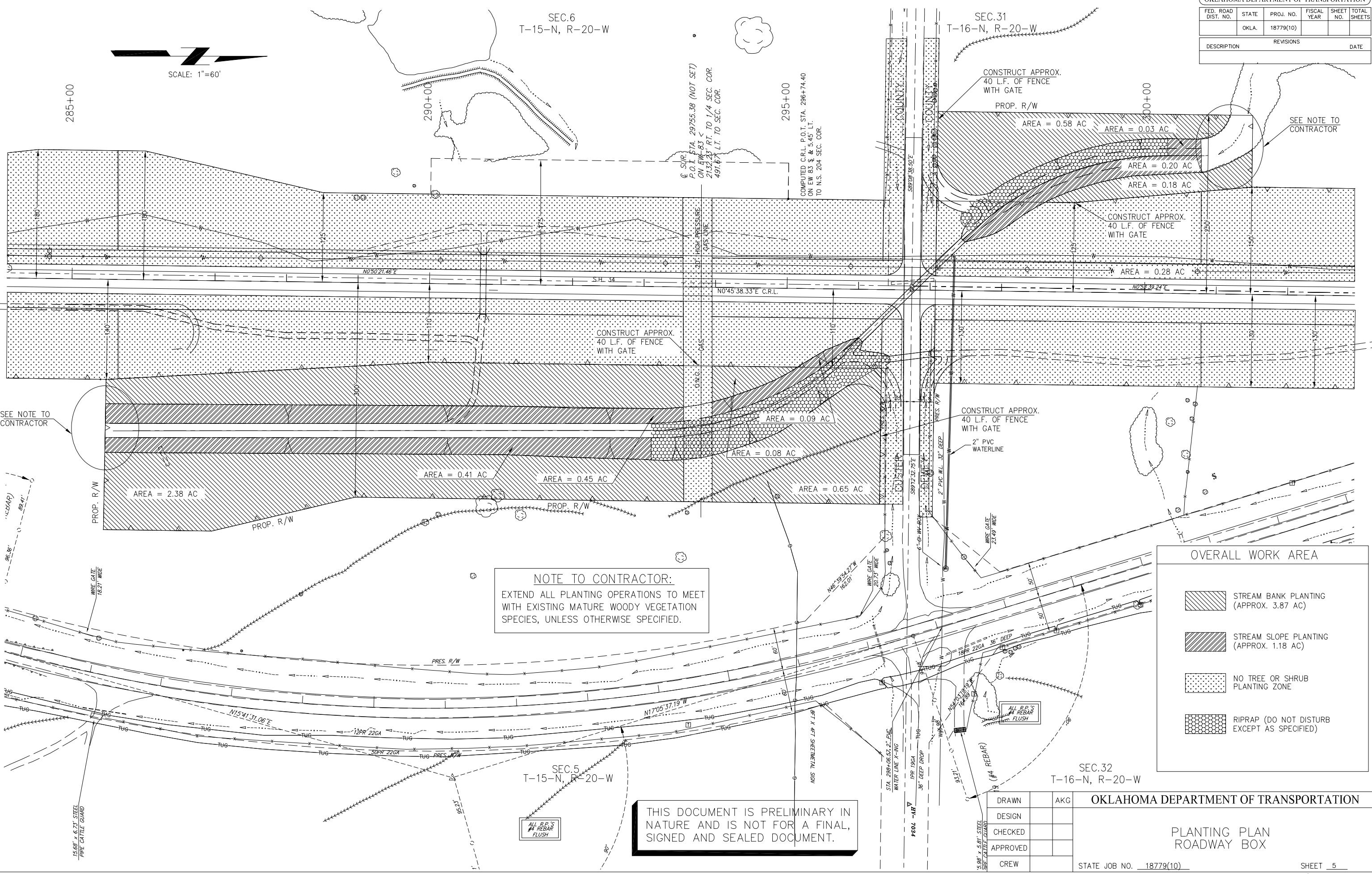
Z:\0400360\Plans\AutoCad\Constructability\Review\Plans\Planting\Plan_RCB.dwg 1/12/2009 5:07 PM

OKLAHOMA DEPARTMENT OF TRANSPORTATION					
FED. ROAD DIST. NO.	STATE	PROJ. NO.	FISCAL YEAR	SHEET NO.	TOTAL SHEETS
	OKLA.	18779(10)			
DESCRIPTION		REVISIONS		DATE	



SEC.6
T-15-N, R-20-W

SEC.31
T-16-N, R-20-W



NOTE TO CONTRACTOR:
EXTEND ALL PLANTING OPERATIONS TO MEET WITH EXISTING MATURE WOODY VEGETATION SPECIES, UNLESS OTHERWISE SPECIFIED.

THIS DOCUMENT IS PRELIMINARY IN NATURE AND IS NOT FOR A FINAL, SIGNED AND SEALED DOCUMENT.

OVERALL WORK AREA

- STREAM BANK PLANTING (APPROX. 3.87 AC)
- STREAM SLOPE PLANTING (APPROX. 1.18 AC)
- NO TREE OR SHRUB PLANTING ZONE
- RIPRAP (DO NOT DISTURB EXCEPT AS SPECIFIED)

DRAWN	AKG
DESIGN	
CHECKED	
APPROVED	
CREW	

OKLAHOMA DEPARTMENT OF TRANSPORTATION

PLANTING PLAN
ROADWAY BOX

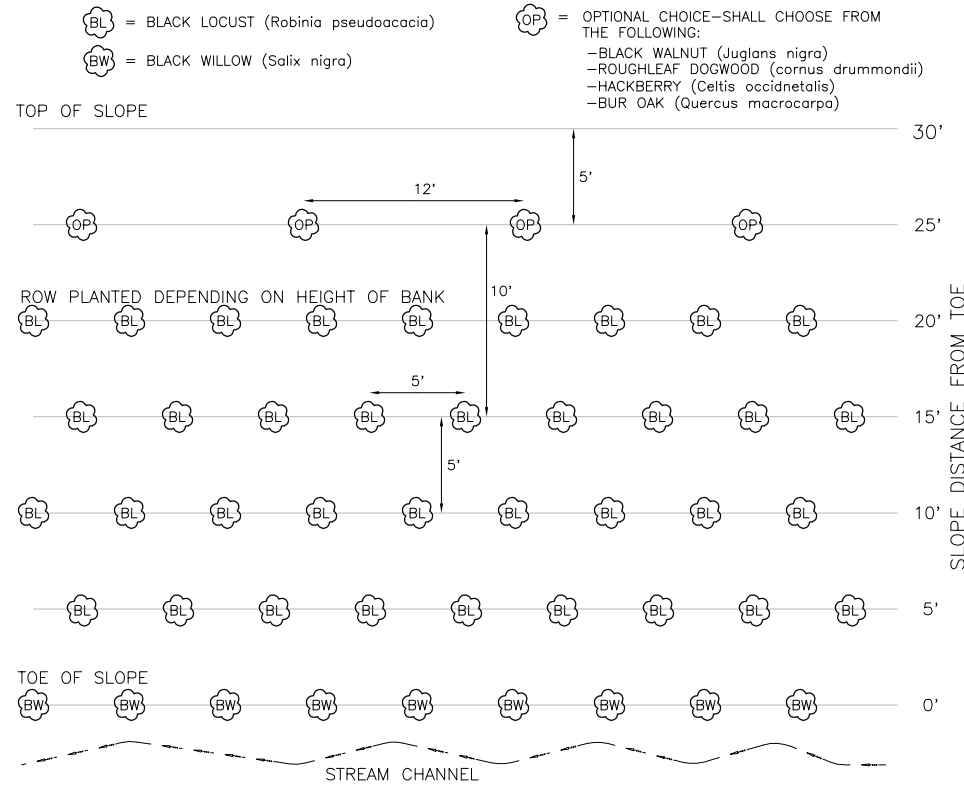
STATE JOB NO. 18779(10)

SHEET 5

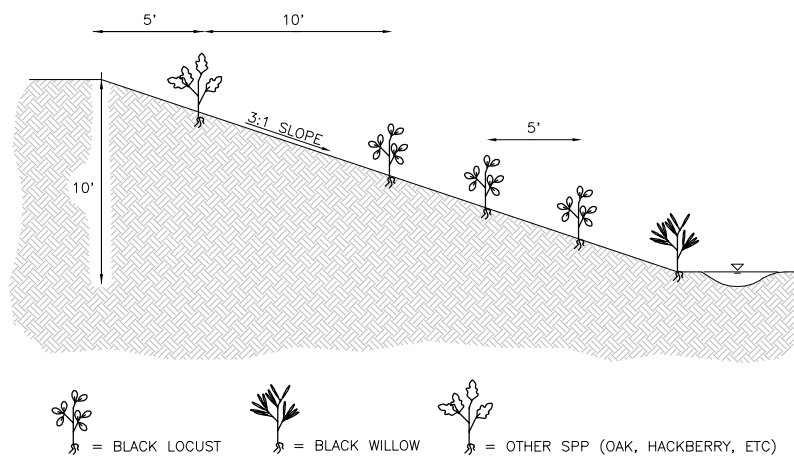
CUSTER/DEWEY COUNTY

FED. ROAD DIST. NO.	STATE	PROJ. NO.	FISCAL YEAR	SHEET NO.	TOTAL SHEETS	
	OKLA.	18779(10)				
DESCRIPTION					REVISIONS	DATE

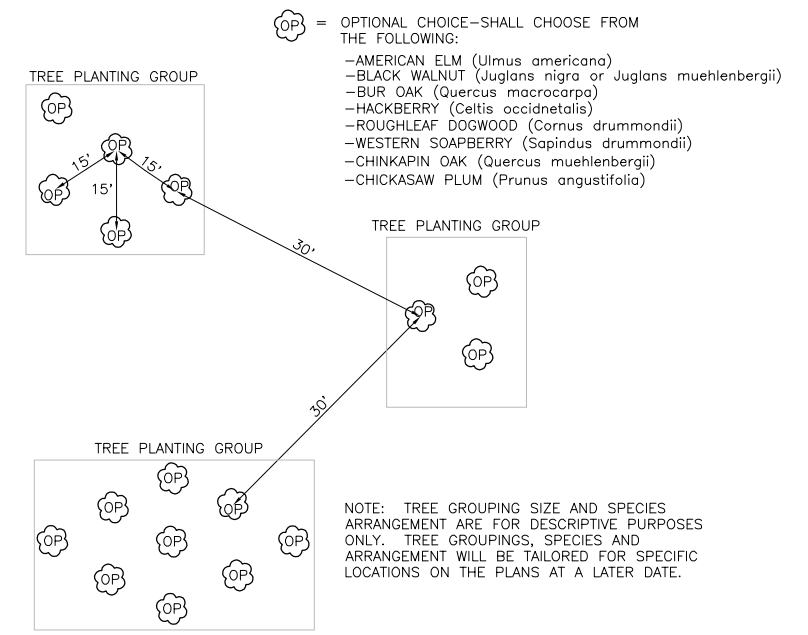
STREAM SLOPE PLANTING PLAN VIEW
BARE ROOT TREES



STREAM SLOPE PLANTING TYPICAL SECTION VIEW
BARE ROOT TREES



STREAM BANK PLANTING PLAN VIEW
CONTAINER TREES



SITE PREPARATION NOTES

DO NOT REMOVE ANY MATURE, ESTABLISHED WOODY VEGETATION EXCEPT AS SPECIFIED.

ALL SALT CEDAR TREES WITHIN PLANTING AREAS (INCLUDING RIPRAP LOCATIONS) SHOULD BE TREATED PRIOR TO PLANTING USING THE CUT-STUMP METHOD. THE FOLLOWING PROCEDURE SHOULD BE FOLLOWED WHEN USING THE CUT-STUMP METHOD:

- * CUT THE PLANT WITHIN FIVE CENTIMETERS OF THE SOIL
- * APPLY AN AQUATIC HERBICIDE MIX WITHIN FIVE MINUTES OF CUTTING TO THE STEM AND AROUND THE PERIMETER OF THE PLANT
- * THE HERBICIDE MIX SHOULD BE 0.5% IMAZAPYR AND 0.5% GLYPHOSATE; OR SIMILAR PROVEN HERBICIDE.
- * NONIONIC SURFACTANT SHOULD BE ADDED TO THE MIX AT A RATE OF ONE QUART PER 100 GALLONS OF WATER
- * HERBICIDE LABELS SHOULD BE CONSULTED FOR RECOMMENDED USE RATES AND LOCATIONS
- * ODOT APPROVED HERBICIDE SHOULD BE USED
- * ODOT PROCEDURES FOR HERBICIDE APPLICATION USE SHOULD BE FOLLOWED
- * RETREAT IN FOUR TO SIX MONTHS WITH HERBICIDE AND REMOVE ALL DEAD SALT CEDAR BRUSH

ONE MONTH PRIOR TO PLANTING, ALL AREAS TO BE PLANTED SHOULD BE MOWED TO SOIL LEVEL; OR AS LOW AS POSSIBLE. THE MOWED GRASS/BRUSH SHOULD THEN BE REMOVED FROM THE SITE TO PREVENT FURTHER SPREAD OF THE INVASIVE SPECIES CURRENTLY PRESENT AT THE SITE. CHEMICAL VEGETATION CONTROL MAY ALSO BE NEEDED/DESIRED DEPENDING ON PLANTING DONE.

STREAM SLOPE PLANTING NOTES

STREAM SLOPES WILL BE PLANTED WITH BARE ROOT SEEDLINGS OF BLACK LOCUST (ROBINIA PSEUDOACACIA) AND BLACK WILLOW (SALIX NIGRA). THE SEEDLINGS WILL BE SPACED ON 5'X5' STAGGERED ROWS. THE NUMBER OF ROWS WILL DEPEND ON BANK HEIGHT. THE TOP ROW OF THE SLOPE PLANTING WILL BE SPACED 10 FEET FROM BLACK LOCUST TREES AND 5 FEET FROM THE TOP OF BANK. WALNUT, DOGWOOD, HACKBERRY AND OAK WILL BE PLANTED ON A 12 FOOT SPACING BETWEEN TREES. AFTER PLANTING, PINE STRAW WILL BE PLACED AROUND EACH SEEDLING TO AT LEAST 18 INCHES AND 2 TO 4 INCHES DEEP (OR SIMILAR APPROVED MULCH MAY BE USED).

BARE ROOT PLANTING NOTES

THE FOLLOWING PROCEDURE SHOULD BE FOLLOWED FOR BARE ROOT PLANTING ON THE STREAM SLOPE:

- * PLANT SEEDLINGS IN EARLY SPRING OR AS APPROVED
- * USE A PLANTING BAR OR DIPPLE STICK TO PLANT SEEDLINGS
- * INSERT BAR AT 45° ANGLE AND PUSH FORWARD TO UPRIGHT POSITION
- * REMOVE BAR AND PLACE SEEDLING IN HOLE SO THAT THE ROOT COLLAR IS EVEN WITH SOIL SURFACE
- * INSERT BAR TWO INCHES FROM SEEDLING
- * PULL HANDLE OF BAR AWAY FROM THE SEEDLING TO FIRM SOIL AT BOTTOM OF ROOTS
- * PUSH HANDLE OF BAR FORWARD TO FIRM SOIL AT TOP OF ROOT
- * INSERT BAR TWO INCHES FROM LAST HOLE
- * PUSH FORWARD THEN PULL BACKWARD TO FILL HOLE
- * FIRM SOIL AROUND SEEDLING WITH FOOT
- * WATER SEEDLINGS AFTER PLANTING USING WATERING TRUCK FROM STREAM BANK

STREAM BANK PLANTING NOTES

ONE-QUART TO ONE-GALLON SIZED, LOCALLY GROWN CONTAINER TREES WILL BE PLANTED IN GROUPS OF 3 TO 9. GROUPS SHOULD BE SPACED 30 FEET APART AND SPACES BETWEEN TREES WITHIN GROUPS SHOULD BE 15 FEET. AFTER PLANTING, HARDWOOD MULCH OR SIMILAR APPROVED MULCH SHOULD BE PLACED 2 TO 4 INCHES DEEP AROUND EACH GROUP AND EXTEND OUT AT LEAST 24 INCHES FROM THE EDGE OF EACH GROUP.

CONTAINER PLANTING NOTES

THE FOLLOWING PROCEDURE SHOULD BE FOLLOWED FOR CONTAINERIZED PLANTING ON THE STREAM BANK:

- * PLANTING SHOULD OCCUR IN EARLY SPRING OR AS APPROVED
- * DIG THE PLANTING HOLE 2 TO 3 TIMES THE DIAMETER OF THE TREE'S ROOT BALL
- * PLACE TREE IN THE HOLE SO THAT THE ROOT COLLAR IS AT THE SAME LEVEL AS THE SOIL SURFACE
- * REMOVE CONTAINER WITHOUT DAMAGING THE ROOT BALL
- * CIRCLING ROOTS SHOULD BE TEASED APART OR VERTICALLY CUT TO PREVENT GIRDLING
- * BACKFILL THE HOLE AROUND THE ROOT BALL WHILE FIRMLY TAMPING IN PLACE
- * FILL HOLE TO ORIGINAL GRADE
- * WATER TREES AFTER PLANTING USING WATERING TRUCK
- * KEEP MULCH 6 INCHES AWAY FROM TRUNK

INVASIVE SPECIES NOTES

INVASIVE PLANT SPECIES ARE ALREADY WELL ESTABLISHED AT THE PROPOSED PLANTING SITES. AFTER PLANTING, INVASIVES WILL NEED TO BE CONTROLLED. TO REMOVE INFESTATIONS OF MUSK THISTLE (CARDUUS NUTANS), SCOTCH THISTLE (ONOPORDUM ACANTHIUM), AND CANADA THISTLE (CIRSIIUM ARVENSE). TO CONTROL INVASIVES DURING THE FIRST THREE YEARS OF MONITORING THE FOLLOWING ACTIONS SHOULD BE TAKEN:

- * LIMIT INVASIVE GROWTH BY MOWING AND WEED-EATING AROUND PLANTED TREES ONCE EVERY THREE MONTHS DURING DORMANT SEASONS AND ONCE A MONTH DURING GROWING SEASON
- * APPLY MULCH TO TREE GROUPS PLANTED ON THE STREAM BANK AND PINE STRAW MULCH TO STREAM SLOPES ONCE PER YEAR USING THE SAME RATES USED AT THE INITIAL PLANTING
- * APPLY AN AQUATIC HERBICIDE MIX ONCE PER YEAR TO CREATE A FOUR FOOT CLEAR ZONE AROUND BARE ROOT SEEDLINGS
- * FOLLOW ODOT REQUIREMENTS FOR TREATING NOXIOUS WEEDS
- * TREAT PLANTING AREA FOR SALT CEDAR ONCE PER YEAR USING THE CUT-STUMP METHOD

ODOT MIX PLANTING NOTES

STREAM BANK PLANTING AREAS WILL BE PLANTED WITH AN OKLAHOMA NATIVE GRASS AND WILDFLOWER MIX PROVIDED BY ODOT. THE AREA SHOULD BE SCARIFIED NO DEEPER THAN 1/2 INCH PRIOR TO SEED AND TREE PLANTING. A NATIVE GRASS DRILLER SHOULD BE USED TO PLANT THE SEED MIX. THE AREA SHOULD THEN BE RAKED TO COVER SEEDS. AFTER PLANTING, THE AREA SHOULD BE MULCHED 2 TO 4 INCHES DEEP WITH WEED-FREE HAY.

PEST NOTES

- * USE AREA REPELLANTS AS NEEDED
- * USE INDIVIDUAL PLANT BARRIERS FOR LARGER TREES
- * USE LOCALIZED REPELLANTS FOR SEEDLINGS AS NEEDED
- * USE APPROPRIATE INSECTICIDES AND FUNGICIDES AS NEEDED

WATERING AND FERTILIZATION NOTES

THE TREES SHOULD BE WATERED BIWEEKLY DURING THE SPRING AND ONCE PER WEEK DURING THE SUMMER UNTIL THE TREES HAVE BECOME ESTABLISHED. INCLUDES APPROXIMATELY 5 TO 10 GALLONS OF WATER PER TREE FOR WATERING PER WEEK. BARE ROOT SEEDLINGS REQUIRE SATURATING THE SOIL TO A DEPTH OF 6 INCHES AND CONTAINER TREES REQUIRE SATURATING THE SOIL TO A DEPTH OF 18 INCHES.

FOR THE FIRST YEAR, THE TREES SHOULD BE FERTILIZED IN THE SPRING AT A RATE OF 0.1 POUND (LBS.) OF NITROGEN PER 100 SQUARE FEET (SQ. FT.).

DURING SUBSEQUENT YEARS, FERTILIZATION SHOULD OCCUR IN EARLY SPRING AT A RATE OF 0.2 LBS. NITROGEN PER 100 SQUARE FEET. SLOW RELEASE FERTILIZER SHOULD BE BROADCAST UNDER EACH TREE'S DRIP ZONE. AFTER FERTILIZATION THE TREES SHOULD BE WATERED. IF A GENERAL N-P-K FERTILIZER IS USED, PHOSPHOROUS SHOULD BE LIMITED OR ELIMINATED; USE 24-0-15. FERTILIZER CAN BE ADJUSTED BASED ON SOIL FERTILITY.

MOWING NOTES

MECHANIZED MOWING SHOULD OCCUR ONLY ON STREAM BANK AREAS AND REMAIN OUTSIDE OF TREE GROUPS. TO ALLOW FOR ESTABLISHMENT OF NATIVE GRASSES THE UPLAND AREA SHOULD BE MOWED TO 6 OR 8 INCHES TWICE DURING THE FIRST GROWING SEASON. SUBSEQUENT YEARS SHOULD FOLLOW ODOT MOWING STANDARDS AND PROCEDURES.

HAND MOWING WITHIN TREE GROUPS ON STREAM BANK AND BETWEEN TREES ON STREAM SLOPE SHALL BE DONE TO PREVENT WEEDS FROM OVER GROWING TREES. TREE TRUNKS SHALL BE PROTECTED FROM DAMAGED. (CHEMICAL WEED CONTROL MAY BE USED INSTEAD OF HANDMOWING-AS APPROVED BY ENGINEER.)

THIS DOCUMENT IS PRELIMINARY IN NATURE AND IS NOT FOR A FINAL, SIGNED AND SEALED DOCUMENT.

DRAWN		AKG	OKLAHOMA DEPARTMENT OF TRANSPORTATION		
DESIGN		GC	PLANTING DETAIL SHEET		
CHECKED		CD			
APPROVED		CD			
CREW					
STATE JOB NO. 18779(10)			SHEET 6		
CUSTER/DEWEY COUNTY					